

SPECIFICATIONS	
SHELL WEIGHT:	2800 LBS.
WATER WEIGHT:	9329 LBS.
TOTAL SHELL & WATER WEIGHT:	12129.2 LBS.
WATER VOLUME:	187 Cu.Ft.
WATER GALLONS:	1399 GAL.
SURFACE AREA:	75.0 SQ. FT.
ICC ES LISTED #:	PMG-1161
FDA#:	2030305

SKID SUPPORT STRUCTURE* BONDED TO SPA

☒ ☒

*SKIDS SUPPLIED BY NESPA

LIGHT NICHE

☒ LED SPA LIGHT

MAIN DRAIN

6" Round Hockey Puck
 AquaStar 6HPHAXxxx
 Sumpless Suction Outlet
 Floor/Wall 224 GPM @ 6.3fps
 Complies w/ ANSI Code
 ASME A112.19.8-2007 & VGB 2008

SKIMMER

FRONT ACCESS
 SKIMMER, NSF
 APPROVED

JET

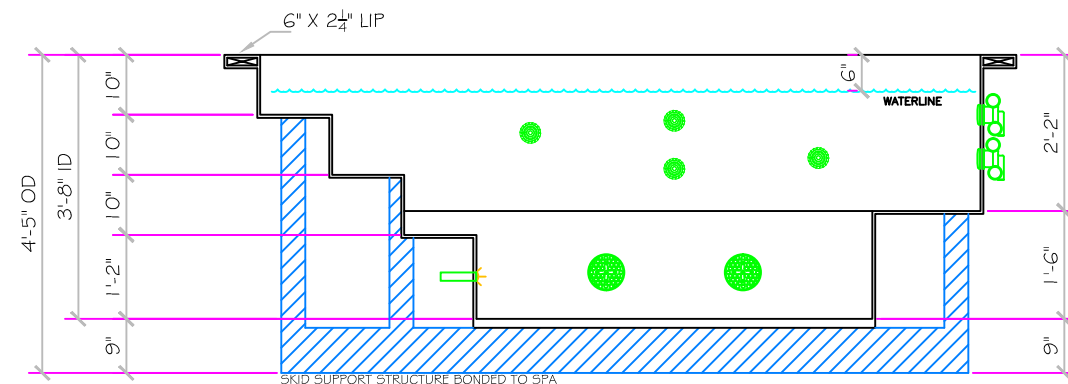
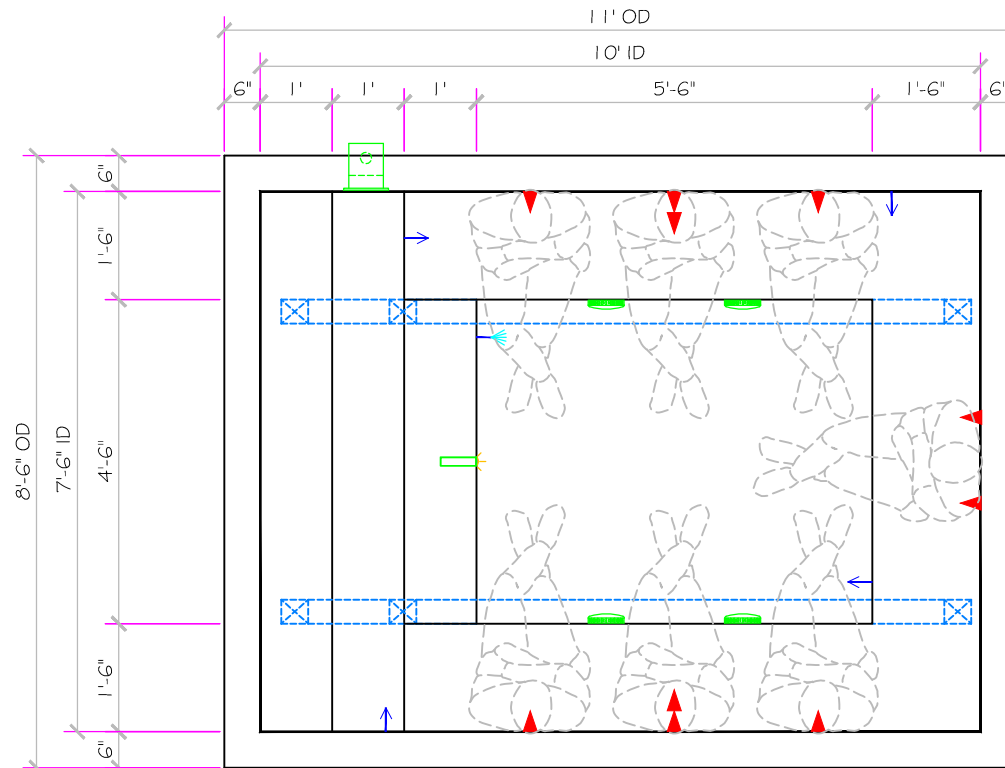
HYDRO INLETS
 1-1/2" WATER - 1-1/2" AIR
 HYDROAIR #10-5100
 COMPLIES W/ ANSI CODE ASME A112.19.8-07
 UL APPROVED

RETURN

INLET FITTINGS
 1-1/2" WALL TYPE W/ EYEBALL
 HYDROAIR #10-3500
 COMPLIES W/ ANSI CODE ASME A112.19.8-07
 UL APPROVED

FILL

INLET FITTINGS
 1-1/2" WALL TYPE W/ EYEBALL
 HYDROAIR #10-3500
 COMPLIES W/ ANSI CODE ASME A112.19.8-07
 UL APPROVED



All drawing dimensions supplied by **NESPA ENTERPRISES INC.** are for reference only. All CAD files were created using AutoCAD file (*.dwg.) and were provided as a service to our customers using AutoCAD. Errors sometimes occur during this process and with software incompatibility upon opening a file. **NESPA ENTERPRISES INC.** and/or any authorized distributor of our products will not be held responsible for problems arising from files which have been converted and does not warrant the documents against deficiencies or typographical errors of any kind. We recommend that all measurements are verified with actual physical product before any custom fabrication in the field occurs.

PRELIMINARY

ALL DIMENSIONS SUBJECT TO 1/4" TOLERANCES

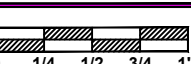
These drawings, concepts, and details contained herein are the original proprietary designs of **NESPA ENTERPRISES INC.**, developed over many years of experience in the industry and as such are protected by the copyright laws of the United States Government. Reproduction of any of the above without written permission to do so by **NESPA ENTERPRISES INC.**, is illegal.

NESPA ENTERPRISES INC.
 2800 Richter Ave. Ste. C Oroville, CA 95966
 Office: (530) 534-9910 Fax: (530) 534-9915
 E-Mail: jim@tiledspas.com Web Site: www.tiledspas.com



If printing as a PDF:
 Page Scaling: None

SCALE
 3/8" = 1'



DWG TYPE
 SD

DWG NAME
 ZORKENDORFER

DATE
 6/17/2013

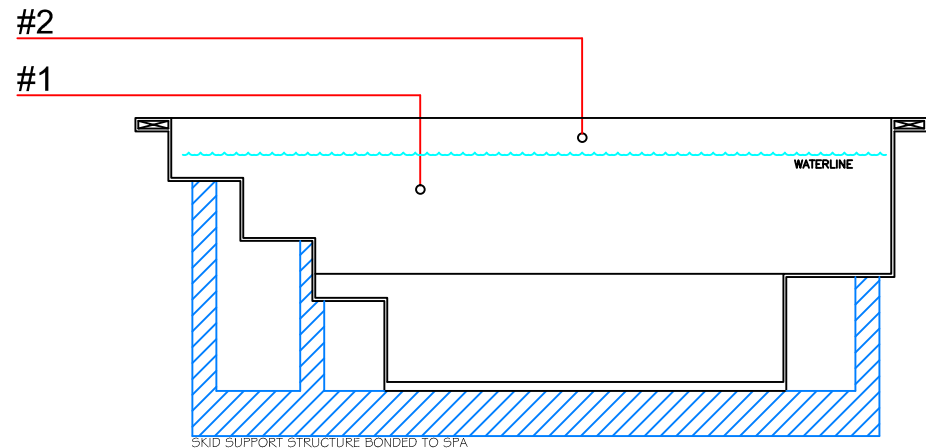
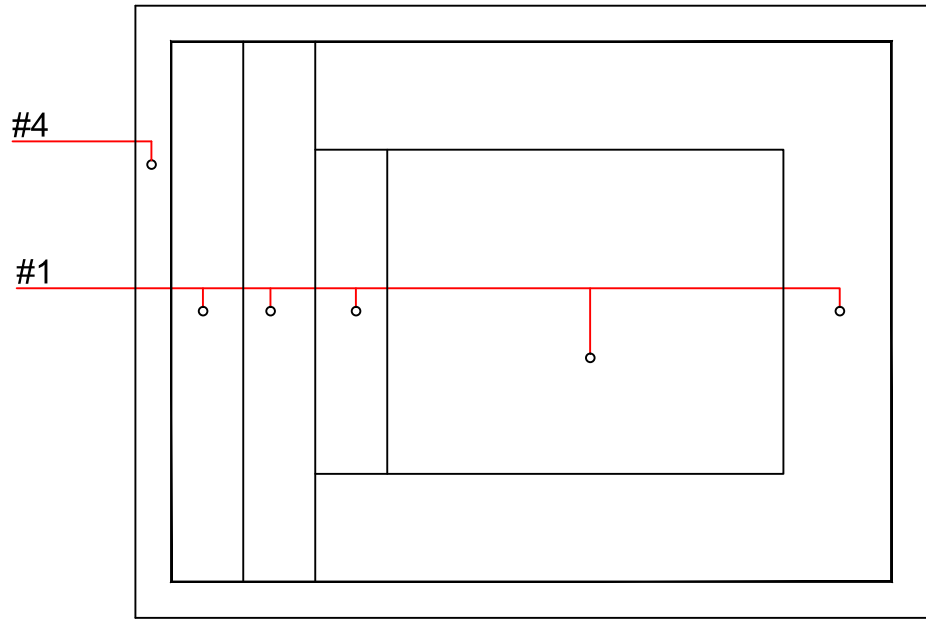
SHEET
 PAGE 1 OF 2

Golden Plain 2 X 2

- #1 - FIELD TILE: _____
- #2 - WATERLINE (optional): _____
- #3 - BENCH & STEP EDGES (optional): _____
- #4 - TILED LIP (optional): _____

Date: _____
 Approval: _____

- #1 - GROUT: _____
- #2 - GROUT: _____
- #3 - GROUT: _____



All drawing dimensions supplied by [NESPA ENTERPRISES INC.](http://www.nespa.com) are for reference only. All CAD files were created using AutoCAD file (*.dwg.) and were provided as a service to our customers using AutoCAD. Errors sometimes occur during this process and with software incompatibility upon opening a file. [NESPA ENTERPRISES INC.](http://www.nespa.com) and/or any authorized distributor of our products will not be held responsible for problems arising from files which have been converted and does not warrant the documents against deficiencies or typographical errors of any kind. We recommend that all measurements are verified with actual physical product before any custom fabrication in the field occurs.

PRELIMINARY

ALL DIMENSIONS SUBJECT TO 1/4" TOLERANCES

These drawings, concepts, and details contained herein are the original proprietary designs of [NESPA ENTERPRISES INC.](http://www.nespa.com), developed over many years of experience in the industry and as such are protected by the copyright laws of the United States Government. Reproduction of any of the above without written permission to do so by [NESPA ENTERPRISES INC.](http://www.nespa.com), is illegal.

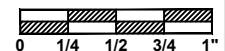
NESPA ENTERPRISES INC.
 2800 Richter Ave. Ste. C Oroville, CA 95966
 Office: (530) 534-9910 Fax: (530) 534-9915
 E-Mail: jim@tiledspas.com Web Site: www.tiledspas.com



If printing as a PDF:

Page Scaling:

SCALE
 3/8" = 1'



DWG NAME
 ZORKENDORFER

DATE
 6/17/2013

DWG TYPE
 TILE
 SHEET
 PAGE 2 OF 2