

Product Information

Series 1 Ultraviolet Sanitizer System

UV SYSTEM SPECIFICATIONS



The ultraviolet sanitizer system shall be a Trident Ultraviolet Corporation Series 1 ultraviolet water sanitation system, Model S1-_____, rated at _____ volts, 50/60 Hz. The wet UV reactor chamber shall consist of two independent reactor cells, each 5 in (127mm) in diameter. The chambers shall be constructed of virgin UV inhibited PVC material, and shall have the interior of each chamber lined with Type 304L Stainless Steel reflectors. The chambers shall be connected with a molded flow tee capable of isolating one of the chambers if only one or two lamps are utilized. Within the reactors shall be _____ UV-C High Output, Low Pressure Lamps. Each lamp shall be rated at 58 watts input intensity, and shall have a designed dose performance rating of no less than 30,000 $\mu\text{watts/sec/cm}^2$ (30 mJ) at lamp end-of-life (EOL). The EOL shall be no less than 13,000 hours of operating time. The exterior of the UV system shall be protected by a polymeric exterior cladding and the unit shall be suitable for indoor and outdoor locations. (Option) A stainless steel wall mounting bracket kit shall be provided to facilitate mounting of the UV system on a vertical surface.

The UV system shall incorporate a dual scale (PSI / kPa) exterior reading pressure gauge, a lamp-ON indicating incandescent lamp visible from the system exterior, a pressure switch with bypass capability built-in, and stainless steel mounting feet for securing the unit in place. Inlets and outlets shall be 2 in. (63mm) in size and the system shall be supplied with both 2 in. and 63mm size removable/replaceable PVC inlet and outlet unions.

Contained within a polymeric electrical enclosure shall be _____ individual electronic ballast(s), equipped with plug connections negating any on-site wiring of the operating control system.

The UV system shall be equipped with a 96 in. (244cm) electrical supply cord with a local type service plug molded to the cord end. No metallic components shall be exposed to the outside, and no electrical bonding shall be required. Trident UV's US - EPA Registration number shall be listed on the exterior of the UV system and on all cartons and printed materials. Each UV system shall be enclosed in a Heavy Duty cushioned cardboard shipping carton suitable for individual unit UPS type shipping and a printed Limited Warranty and full printed Installation and Operating Instructions shall be included within the packaging.

Model	Part Number	Voltage	Lamps	Flow
S1-11	35-810011	120V/50/60Hz	1	44 GPM/10m ³ /hr
S1-21	35-810021	230V/50/60Hz	1	44 GPM/10m ³ /hr
S1-12	35-810012	120V/50/60Hz	2	84 GPM/19.1m ³ /hr
S1-22	35-810022	230V/50/60Hz	2	84 GPM/19.1m ³ /hr

Model	Part Number	Voltage	Lamps	Flow
S1-13	35-810013	120V/50/60Hz	3	128 GPM/29.1m ³ /hr
S1-23	35-810023	230V/50/60Hz	3	128 GPM/29.1m ³ /hr
S1-14	35-810014	120V/50/60Hz	4	168 GPM/38.2m ³ /hr
S1-24	35-810024	230V/50/60Hz	4	168 GPM/38.2m ³ /hr

All capacities are nominal

POOL SIZING CHART

Trident Model	Maximum Flow Rate (GPM)	Maximum Flow Rate (m ³ /hr)	Max Pool Volume 12 Hr. Turnover (Gallons)	Max Pool Volume 12 Hr. Turnover (m ³)	Max Pool Volume 8 Hr. Turnover (Gallons)	Max Pool Volume 8 Hr. Turnover (m ³)
S1-11/S1-21	44	10.0	31680	120.0	21120	80.0
S1-12/S1-22	84	19.1	60480	229.2	40320	152.8
S1-13/S1-23	128	29.1	92160	349.2	61440	232.8
S1-14/S1-24	164	38.2	118080	458.4	78720	305.6

All capacities are nominal

POND SIZING CHART

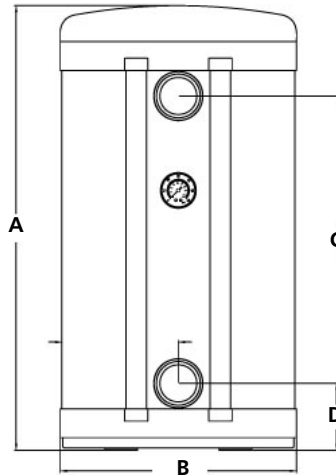
Trident Model (GPM)	Maximum Flow Rate (m ³ /hr)	Maximum Flow Rate (Gallons)	Max Pond Volume 2 Hr. Turnover (m ³)	Max Pond Volume 2 Hr. Turnover (Gallons)	Max Pond Volume 3 Hr. Turnover (m ³)	Max Pond Volume 3 Hr. Turnover
S1-11/S1-21	44	10.0	5280	20.0	7920	30.0
S1-12/S1-22	84	19.1	10080	38.2	15120	57.3
S1-13/S1-23	128	29.1	15360	58.2	23040	87.3
S1-14/S1-24	164	38.2	19680	76.4	29520	114.62

All weights and dimensions are nominal

PHYSICAL DIMENSIONS



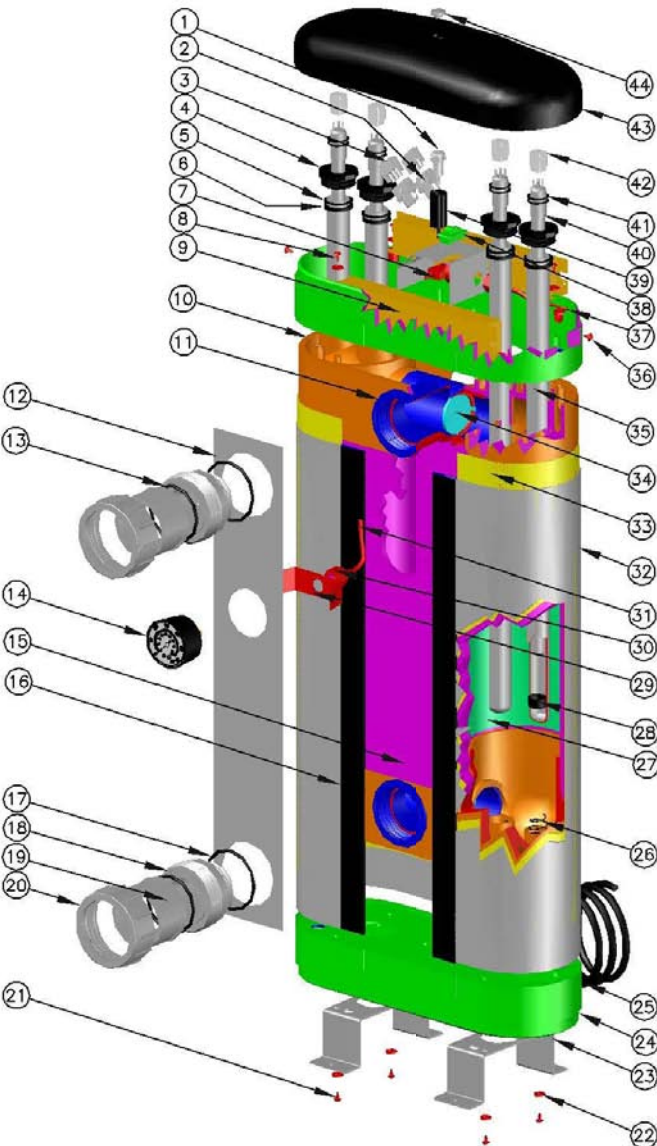
SIDE VIEW



FRONT VIEW

Trident Model	Dim. A	Dim. B	Dim. C	Dim. D	Dim. E	Empty Weight	Operating Weight	Shipping Weight	Carton Size
All - Imperial	27.08 in.	14.39 in.	17.50 in.	4.08 in.	5.34 in.	13 lbs	41 lbs	18 lbs	9x18x34 in.
All - Metric	68.78 cm	36.55 cm	44.45 cm	10.36 cm	13.56 cm	5.9 kg	18.6 kg	8.2 kg	23x45x86.3 cm

All weights and dimensions are nominal



VOLTAGE	BALLASTS - QTY				PARTS - QTY									
	UV70-101101	UV70-101102	UV70-101201	UV70-101202	#4	#5	#6	#26	#28	#34	#35	#40	#41	#42
120V - 1 LAMP	1				1	1	1	1	1	2	1	1	2	1
120V - 2 LAMPS		1			2	2	2	2	2	2	2	2	4	2
120V - 3 LAMPS	1	1			3	3	3	3	3	0	3	3	6	3
120V - 4 LAMPS		2			4	4	4	4	4	0	4	4	8	4
230V - 1 LAMP			1		1	1	1	1	1	2	1	1	2	1
230V - 2 LAMPS				1	2	2	2	2	2	2	2	2	4	2
230V - 3 LAMPS			1		1	3	3	3	3	0	3	3	6	3
230V - 4 LAMPS				2	2	4	4	4	4	0	4	4	8	4

43	INDICATOR LIGHT LENS	1	UV86-021103
43	ENCLOSURE COVER - BLACK	1	UV86-021101
43	LAMP SOCKET	SEE MATRIX	UV52-021000
41	O-RING	SEE MATRIX	UV44-100202
44	UV LAMP	SEE MATRIX	UV70-114100
39	INDICATOR LIGHT HOLDER	1	UV86-020119
38	SLIDE SWITCH	1	UV70-061000
37	TEE FITTING	1	UV44-072000
36	SCREW	2	UV40-061038
35	QUARTZ TUBE	SEE MATRIX	UV58-801000
34	TEE PLUG	SEE MATRIX	UV86-021004
33	FOAM INSULATION WRAPPER	1	UV44-041000
33	OUTER WRAPPER - PLATINUM	1	UV86-040201
31	FLEXIBLE TUBING - BLACK	1	UV44-061018
29	BARB ADAPTOR	1	UV44-071000
28	PRESSURE GAUGE MOUNTING BRACKET	1	UV82-020140
27	LAMP CUSHION	SEE MATRIX	UV86-020020
27	INNER REFLECTOR - STAINLESS STEEL	2	UV82-500100
26	QUARTZ TUBE SUPPORTING SPRING - S/S	SEE MATRIX	UV40-501200
25	POWER CORD - 96" NEMA (SEE NOTE 1)	1	UV64-001000
24	ASSEMBLY END BASE - BLACK	2	UV86-021002
23	MOUNTING LEG - STAINLESS STEEL	2	UV82-041010
23	FLAT WASHER	10	UV40-080100
21	SCREW	4	UV40-061075
20	UNION NUT - GRAY	2	UV86-022301
19	UNION HALF 63mm SKT - GRAY	2	UV86-110006
19	UNION HALF 2" - GRAY	2	UV86-110002
19	UNION 2" MIPT - GRAY	2	UV86-024000
17	O-RING	2	UV44-100201
16	H CHANNEL	2	UV86-050022
15	REACTOR HOUSING	2	UV86-021001
14	PRESSURE GAUGE	1	UV84-022340
13	O-RING	2	UV44-100200
12	OUTER WRAPPER INSERT - BLACK	1	UV86-040020
11	TEE FITTING	2	UV86-021003
10	REACTOR HOUSING END CAP - BLACK	4	UV86-021002
9	BALLAST ASSEMBLY	SEE MATRIX	
8	SCREW	8	UV40-061350
7	PRESSURE SWITCH	1	UV70-023050
6	QUAD RING - 1" QUARTZ TUBE SEALING	SEE MATRIX	UV44-021301
5	WASHER - QUARTZ SEALING COMPRESSION	SEE MATRIX	UV86-021000
4	QUARTZ TUBE SEALING NUT - 1" STOPPED	SEE MATRIX	UV86-021030
3	3 PIN MALE AMP CONNECTOR	1	UV52-062000
2	3 PIN FEMALE AMP CONNECTOR	1	UV52-061000
1	INDICATOR LIGHT	1	UV70-111200
ITEM	DESCRIPTION	QTY	PART#

NOTES: 1. CONSULT YOUR SUPPLIER FOR LOCAL POWER CORD CONFIGURATIONS