



NESPA
TILED SPAS

Production Booklet

for

RIGGINS SPA

2800 Richter Ave. Suite C, Oroville, CA 95965 • **voice:** (530)534-9910
fax: (530)534-9915 • **email:** sales@tiledspas.com • **website:** www.tiledspas.com



RECOMMENDED MAINTENANCE

Please Note:

These are only recommended guidelines to care for a Nespa all tiled spa. Local codes may require additional procedures, therefore consult with a pool professional that is LA county Health Department certified for more information on local codes and requirements.

SPA SURFACE

Your spa tile is acid resistant and frost-proof. The Tile does not absorb germs or algae. Tile does not stain and is very easy to clean. Color does not fade or lose its luster. All grouts are epoxy based and are extremely durable. To remove scum line use soft nylon brush and small amounts of biodegradable soaps. Do not use abrasive brushes or chemicals.

MAINTENANCE

A. CHEMICALS:

- 1) It is important to maintain a chlorine residual of 2 PPM in the spa. That residual can be provided by chlorine or bromine.
- 2) It is recommended to use Bromine or dichlor (granular) forms of chlorine. If bromine Tabs are used we suggest floating or inline dispenser.
- 3) Never use acid to lower Ph in the tile spa.
- 4) Never use trichlor chlorine (1" or 3") tablets in the Nespa spas.
- 5) Never place tablets in skimmer basket.

B. DRAINING THE SPA:

- 1) It is recommended to drain the spa at least once every 2 months depending on bath load and water clarity.
- 2) The spa should be drained through valve exiting re-circulation pump in the spa equipment room or sump pump.
- 3) Note: Use caution to drain spa in the winter months or rainy season when water table is at its highest. It is possible for the spa to float due to hydraulic pressure from surrounding water table. We advise that you consult with your local spa specialist prior to draining the spa.

C. SPA EQUIPMENT:

- 1) Clean filter cartridge at least once every month, or when needed; i.e., if water clarity does not improve after several days.
- 2) Keep area free and clear from leaves and debris build-up.
- 3) Keep area free and clear from flooding.

D. SPA LIGHT:

- 1) Spa light has to be on GFCI circuit. It is controlled at spa side with ON/OFF.

E. TILE SERVICING:

- 1) Contact manufacture when servicing tile or grout. @ (530) 534-9910

1			2		3		4			
ZONE	REV	PG.	REVISION DESCRIPTION				DATE			
ALL	0	ALL	INITIAL DESIGN				10-10-06			
ALL	0	ALL	Added Deck Layout				10-16-06			
A	ALL	1	ALL	Added Slope				A	04-23-07	
ALL	2	ALL	Changed Design				04-24-07			
ALL	2	ALL	Added Equipment				06-06-07			
ALL	4	ALL	Added Cover Drawing				07-16-07			
B	ALL	3	ALL	Added JETS				B	07-16-07	
ALL	3	2	Changed Equipment Layout				07-24-07			
ALL	4	2	Changed Equipment Layout				08-09-07			
ALL	5	7-8	Added Electrical Detail				08-27-07			
ALL	6	9	Added Plumbing Detail				08-27-07			
<div style="display: flex; justify-content: space-between;"> <div style="width: 20px; text-align: center;">C</div> <div style="width: 80%;"></div> <div style="width: 20px; text-align: center;">C</div> </div> <div style="display: flex; justify-content: space-between; margin-top: 20px;"> <div style="width: 20px; text-align: center;">D</div> <div style="width: 80%;"></div> <div style="width: 20px; text-align: center;">D</div> </div> <div style="display: flex; justify-content: space-between; margin-top: 20px;"> <div style="width: 20px; text-align: center;">E</div> <div style="width: 80%;"></div> <div style="width: 20px; text-align: center;">E</div> </div>										
			NESPA ENTERPRISES INC. 2800 Richter Ave. Suite C Oroville, CA 95966 Office: (530) 534-9910 Fax: (530) 534-9915 E-Mail: sales@tiledspas.com Web Site: www.tiledspas.com <small>ALL DIMENSIONS SUBJECT TO 1/4" TOLERANCES*</small>			<h1>IMPERIA</h1> <h2>RIGGINS</h2>			F	
<small>These drawings, concepts, and details contained herein are the original proprietary designs of NESPA ENTERPRISES, developed over many years of experience in the pool and spa industry and as such are protected by the copyright laws of the United States Government. Reproduction of any of the above without written permission to do so by NESPA ENTERPRISES, is illegal.</small>			SIZE	8/27/2007	DWG NO.	RIGGINS	REV	6		
			MISC.				SHEET	TITLE PAGE		
1			2		3		4			

SPECIFICATIONS	
DRY WEIGHT:	2000 LBS.
TOTAL WEIGHT:	11292 LBS.
WATER:	1115 GAL.
VOLUME:	149 Cu.Ft.
WEIGHT:	9292 LBS.
SURFACE AREA:	59 SQ. FT.
IAPMO#:	1138
FDA#:	2030305

SKID SUPPORT STRUCTURE* BONDED TO SPA

☒ ☐

*SKIDS SUPPLIED BY NESPA

JET **FILL**

SUCTION ☒☒☒☒

5" HIGH FLOW SUCTIONS
 WATERWAY #640-3850
 8.39 SQ. IN. OPEN AREA
 208 GPM AT 1.5 FT/SEC
 COMPLIES W/ ANSI CODE A112.19
 UL APPROVED

EQUALIZER ☒☒☒☒

4" EQUALIZER
 HYDROAIR #10-6806
 3.61 SQ. IN. OPEN AREA.
 COMPLIES W/ ANSI CODE A112.19

MAIN DRAIN

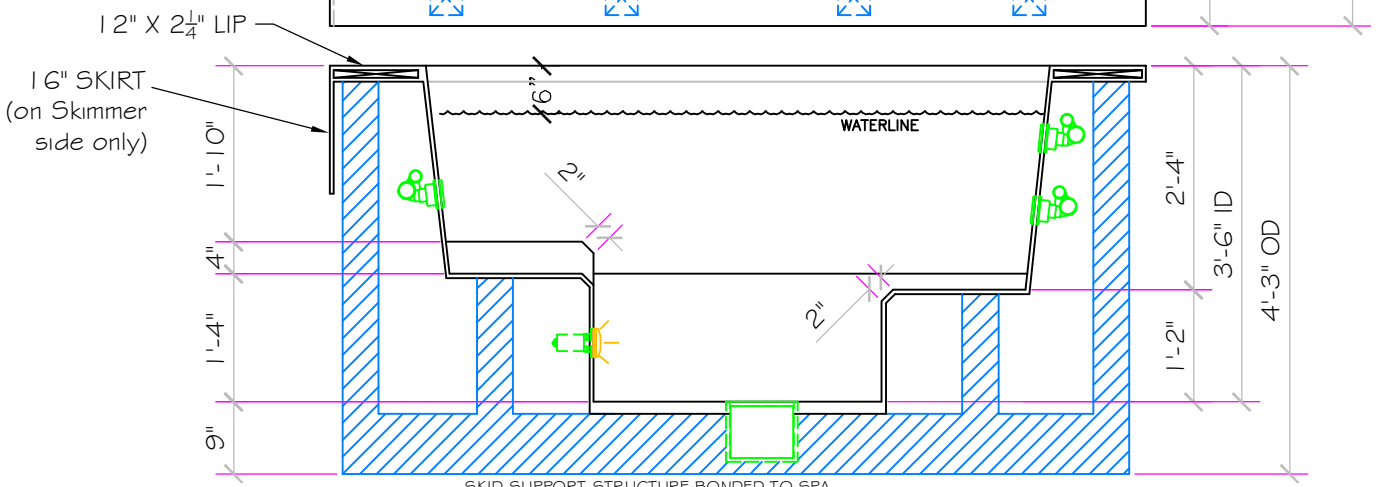
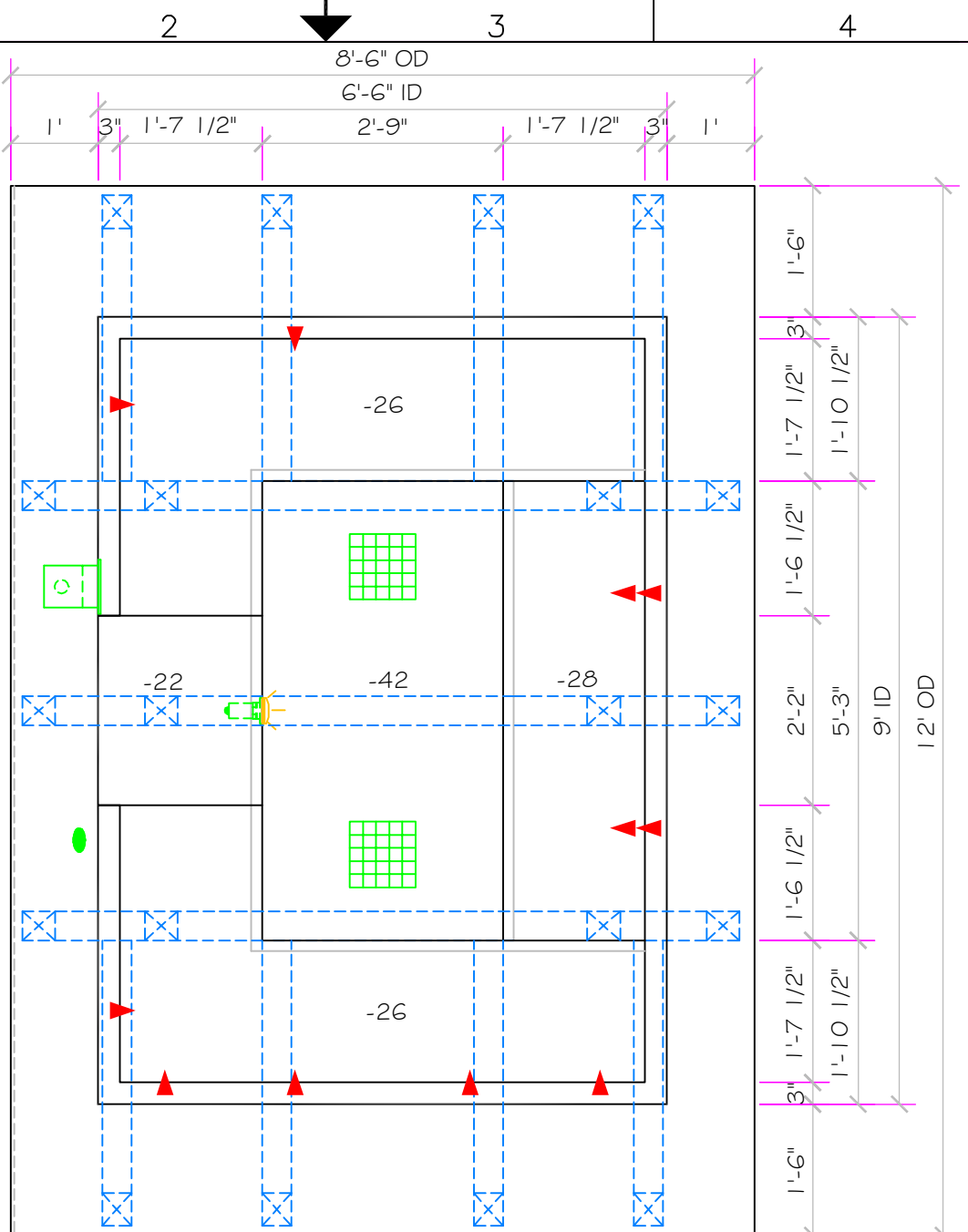
☒☒☒☒ PAC FAB #54-2019
 9" X 9" FRAME,
 49 SQ. IN. OPEN AREA,
 299 GPM @ 1 1/2 FT/SEC


LIGHT NICHE

☒☒☒ SPA LIGHT, 12 V,
 U.L. APPROVED

SKIMMER

☒☒☒ FRONT ACCESS
 SKIMMER, NSF
 APPROVED



	SIZE A	DWG TYPE SD	DWG NO. RIGGINS	REV 6
	SCALE 1/2" = 1'-0"		DATE 8/27/2007	SHEET PAGE 1 OF 9

1

2

3

4

5

6

A

B

C

D

E

F

A

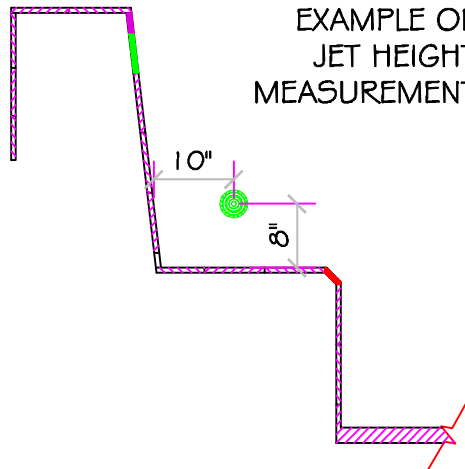
B

C

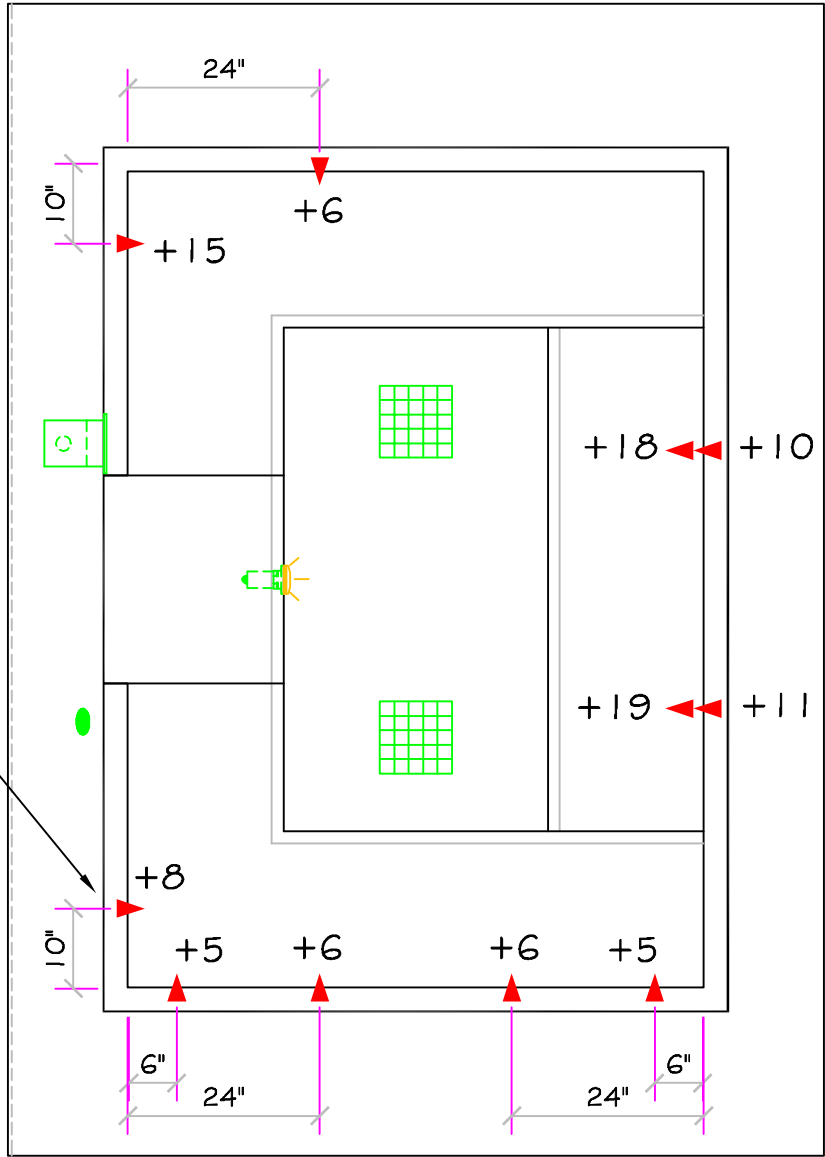
D

E

F



EXAMPLE OF
JET HEIGHT
MEASUREMENT



SIZE A	DWG TYPE Jet Layout	DWG NO. RIGGINS	REV 6
SCALE 1/2" = 1'-0"		DATE 8/27/2007	SHEET PAGE 2 OF 9

1

2

3

4

5

6

A

A

B

B

C

C

D

D

E

E

F

F



3" MAIN DRAIN SUCTION



3" CIRCULATION RETURN



1-1/2" SKIMMER SUCTION

OVERFLOW EQUALIZER

1" WATER FILL



SIZE A	DWG TYPE Plumbing ID	DWG NO. RIGGINS	REV 6
SCALE Custom	DATE 8/27/2007	SHEET PAGE 3 OF 9	

1

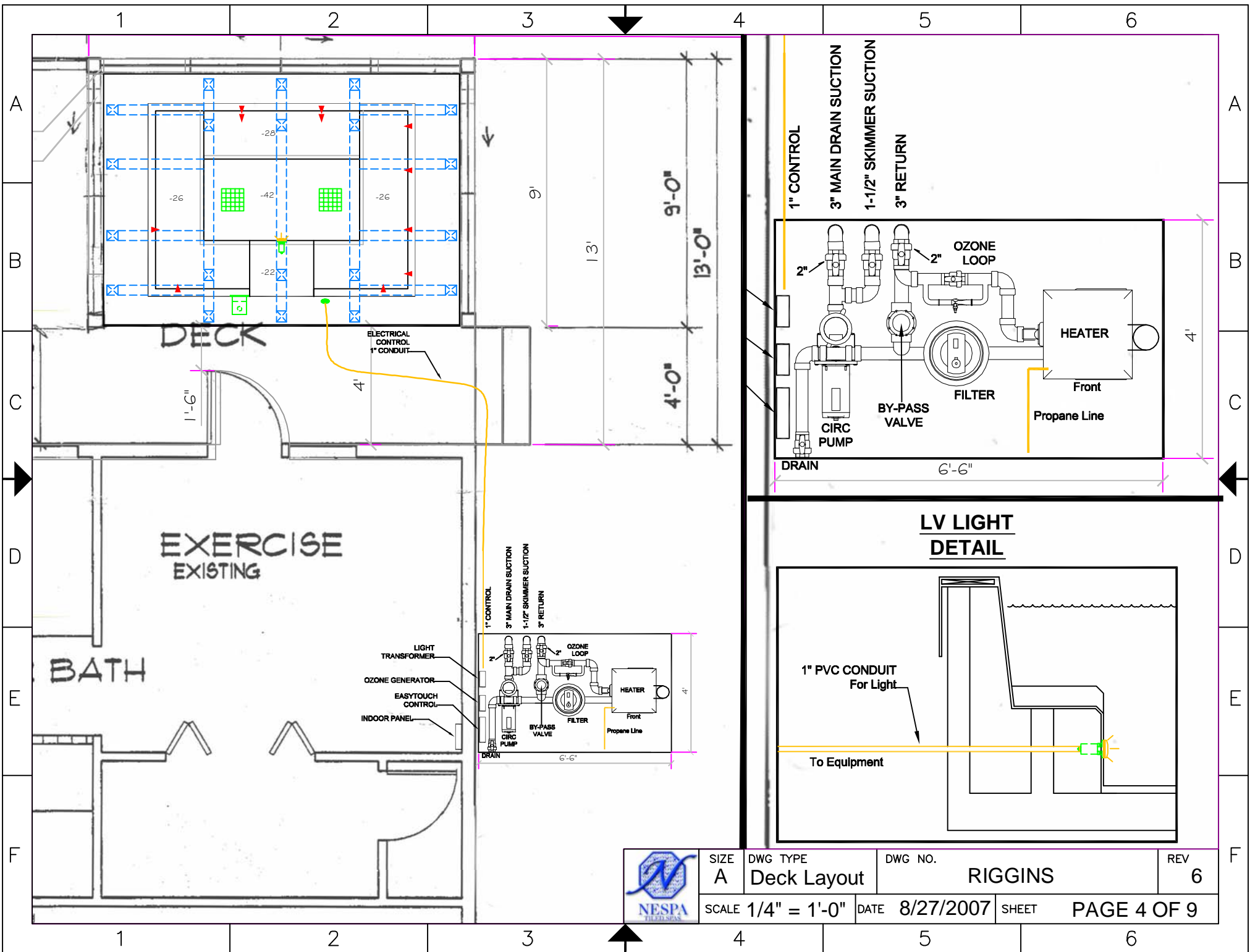
2

3

4

5

6



SIZE A	DWG TYPE Deck Layout	DWG NO. RIGGINS	REV 6
SCALE 1/4" = 1'-0"		DATE 8/27/2007	SHEET PAGE 4 OF 9

- #1 - FIELD TILE: 6X6 STARRY BLACK QUARTZ
- #2 - WATERLINE (optional): CHINA MULTICOLOR #4 DECO
- #3 - BENCH & STEP EDGES 2X2 AMBER GOLD QUARTZ
- #4 - TILED LIP (optional): 6X6 STARRY BLACK QUARTZ
- #5 - TILED LIP (above waterline): 2X6 STARRY BLACK QUARTZ

Date: _____

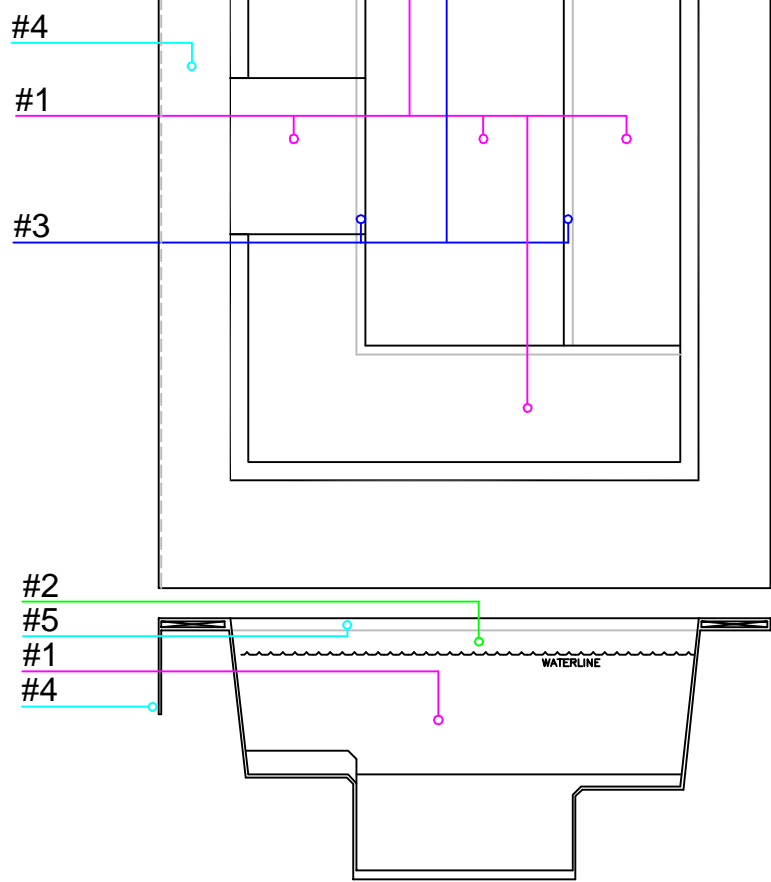
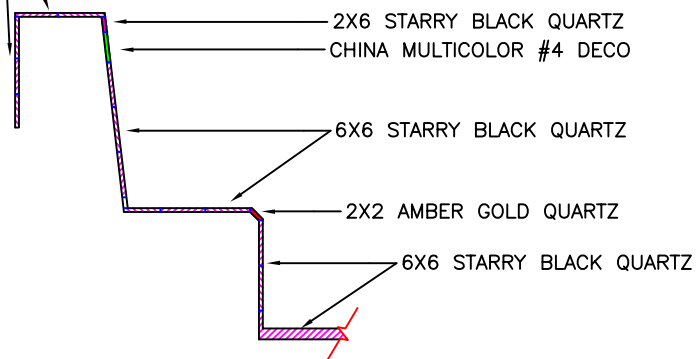
Approval: _____

#1 - GROUT: _____

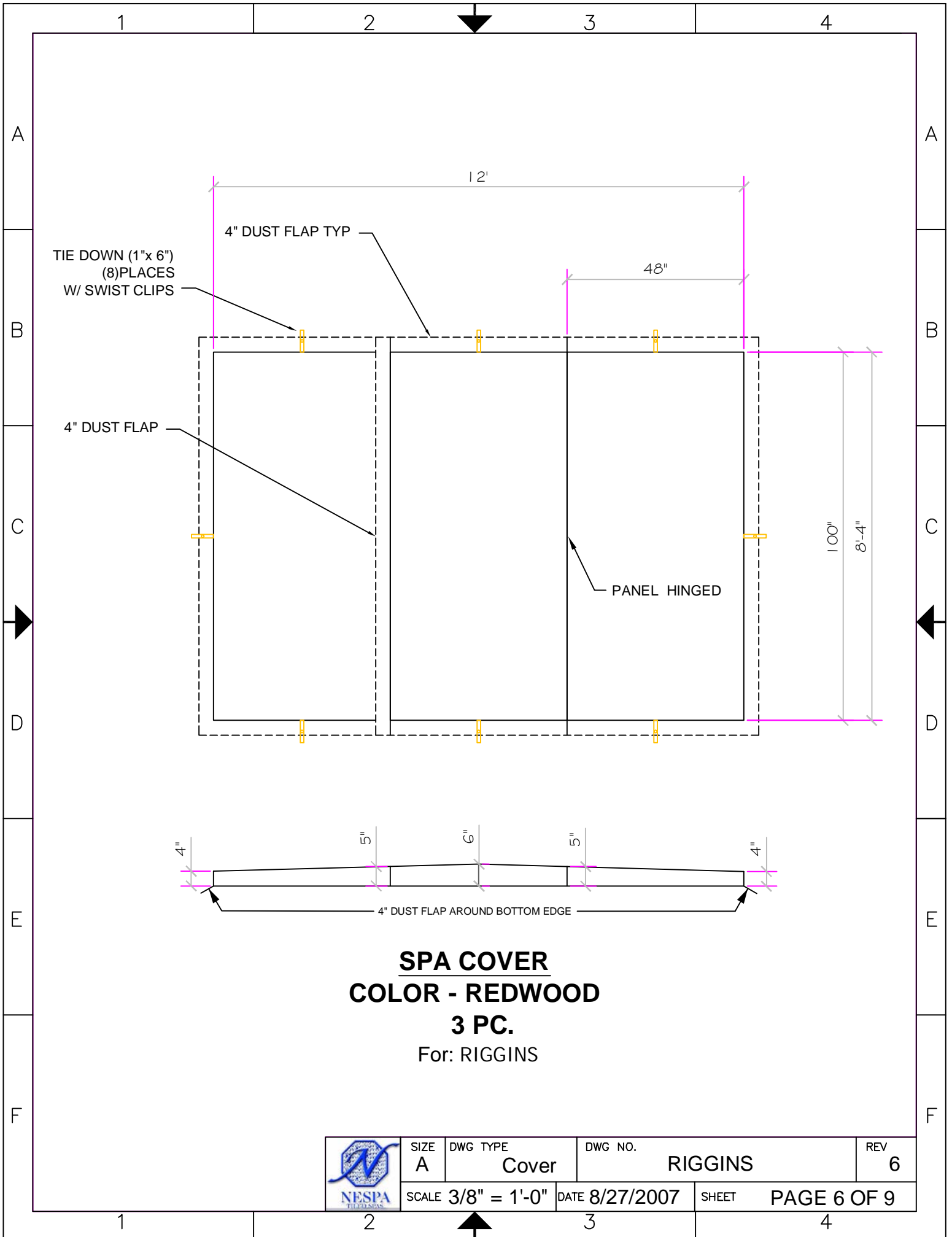
#2 - GROUT: _____

#3 - GROUT: _____


STARRY BLACK 6X6 ON LIP
& VERTICAL SIDE OF SPA
© SKIMMER SIDE



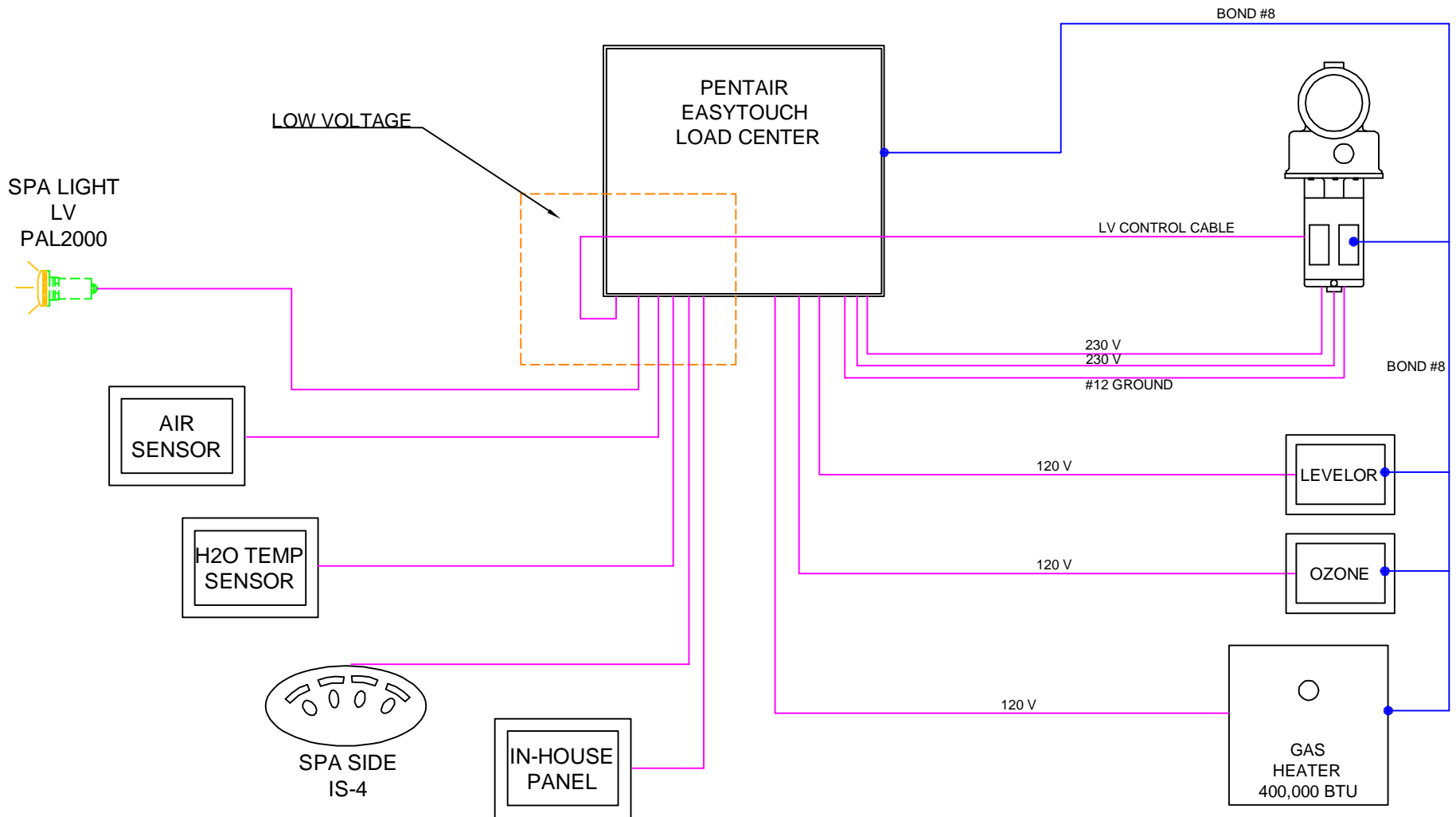
SIZE A	DWG TYPE TILE	DWG NO. RIGGINS	REV 6
SCALE 3/8" = 1'-0"		DATE 8/27/2007	SHEET PAGE 5 OF 9




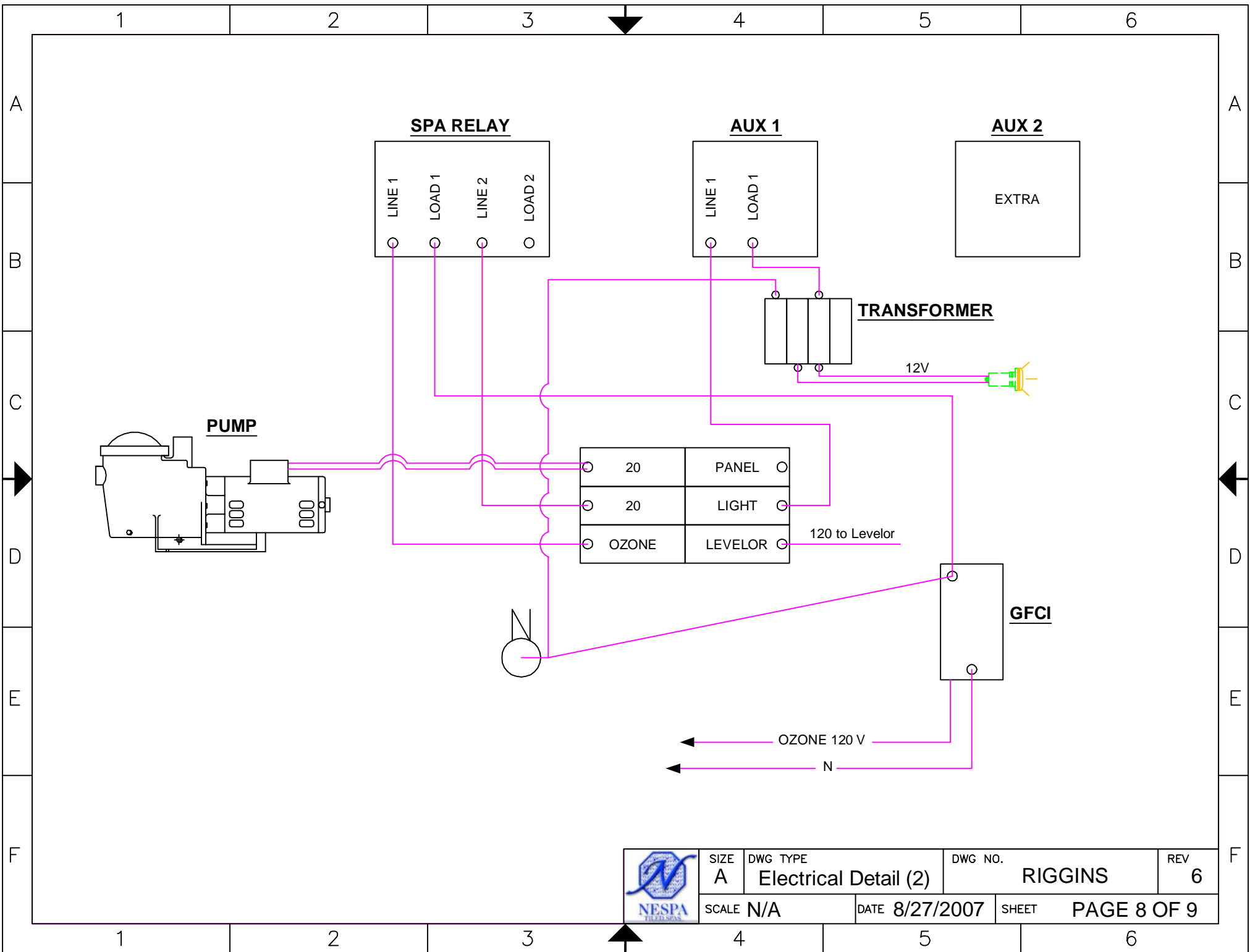
SPA COVER
COLOR - REDWOOD
3 PC.
 For: RIGGINS


	SIZE A	DWG TYPE Cover	DWG NO. RIGGINS	REV 6
	SCALE 3/8" = 1'-0"		DATE 8/27/2007	SHEET PAGE 6 OF 9

EASYTOUCH - 1 PUMP - GAS HEATER - LOW VOLTAGE LIGHT



	SIZE A	DWG TYPE Electrical Detail	DWG NO.	RIGGINS	REV 6
	SCALE N/A	DATE 8/27/2007	SHEET	PAGE 7 OF 9	



	SIZE A	DWG TYPE Electrical Detail (2)	DWG NO. RIGGINS	REV 6
	SCALE N/A	DATE 8/27/2007	SHEET PAGE 8 OF 9	

1 2 3 4 5 6

A

A

B

B

C

C

D

D

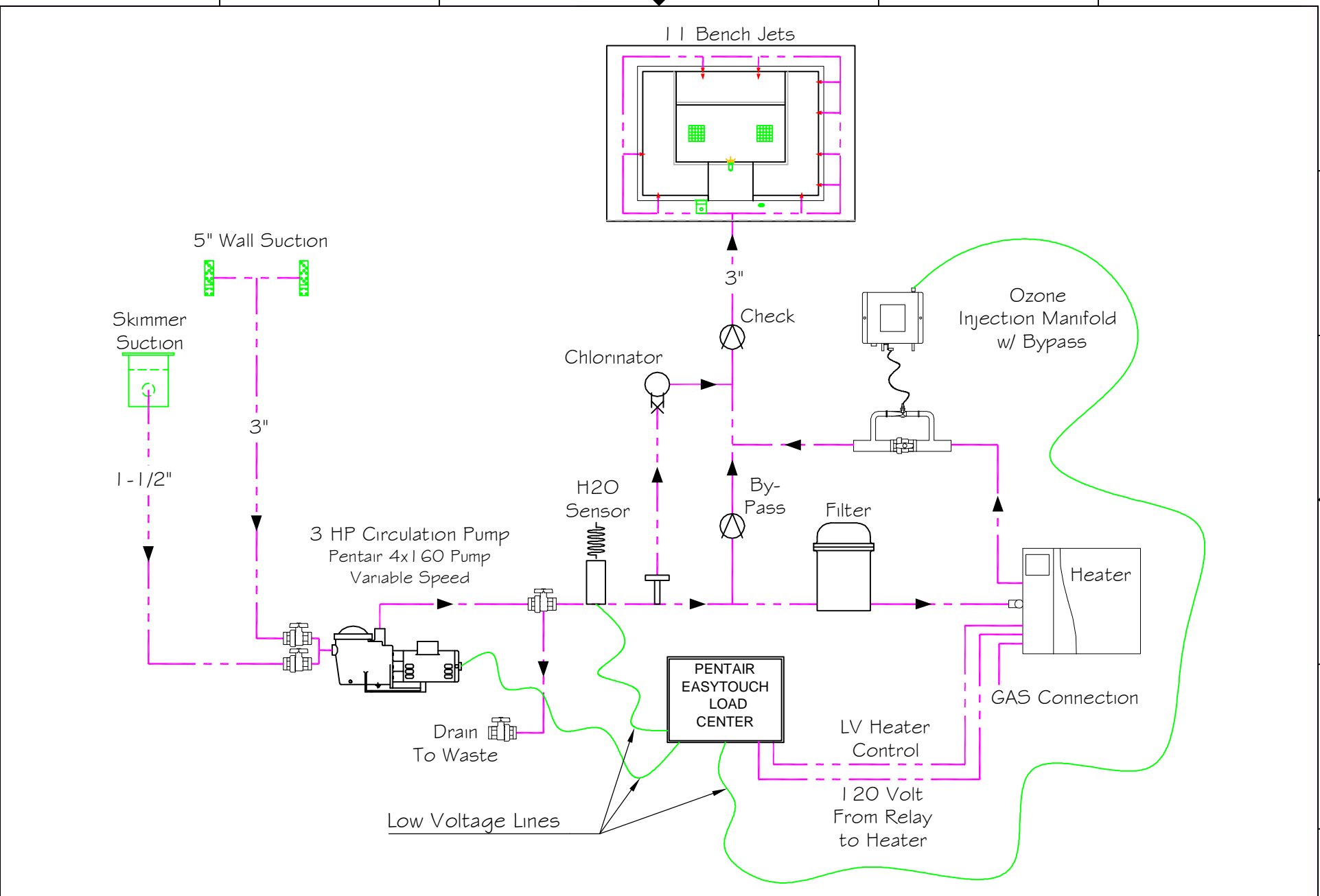
E


E

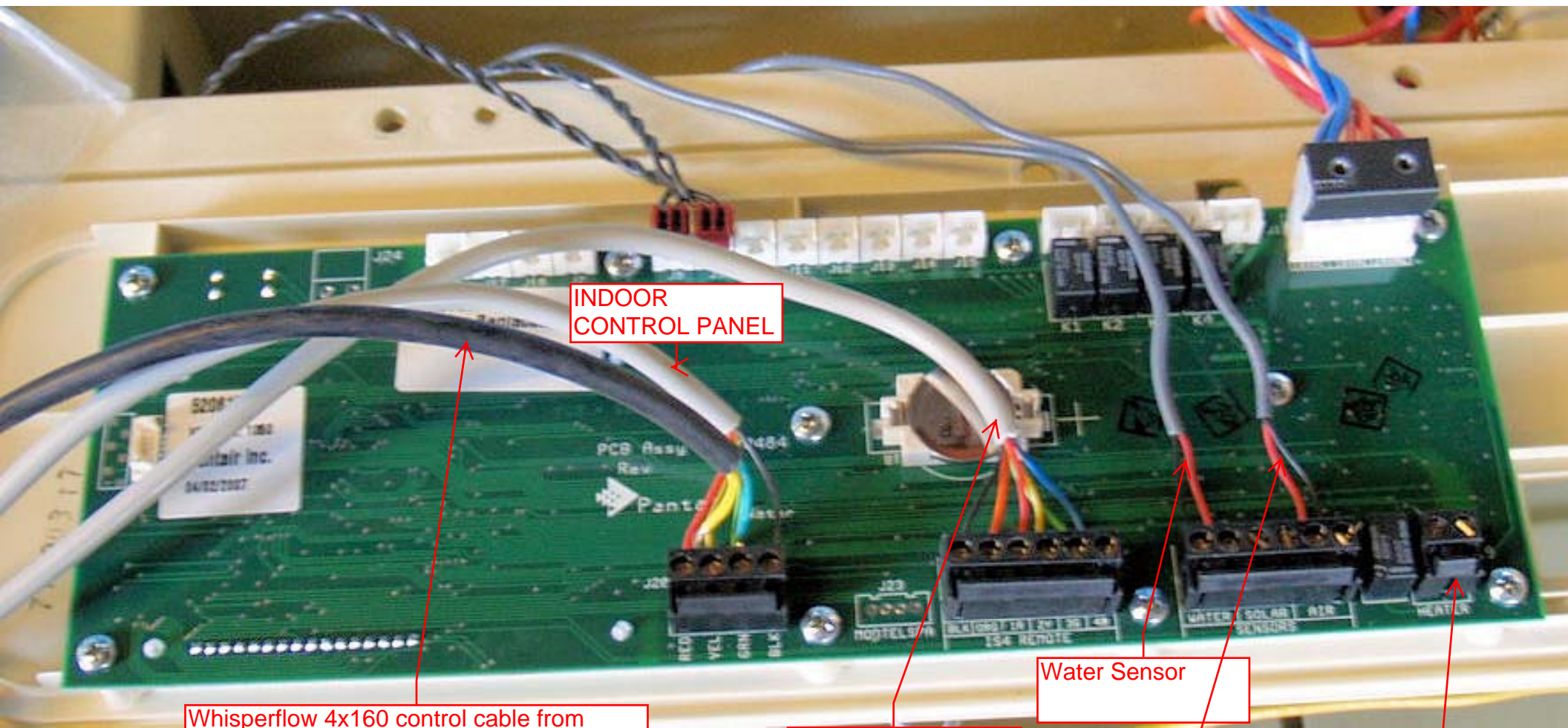
F

F

1 2 3 4 5 6



	SIZE A	DWG TYPE Plumbing Schematic	DWG NO. RIGGINS	REV 6
	SCALE N/A	DATE 8/28/2007	SHEET PAGE 9 OF 9	



INDOOR
CONTROL PANEL

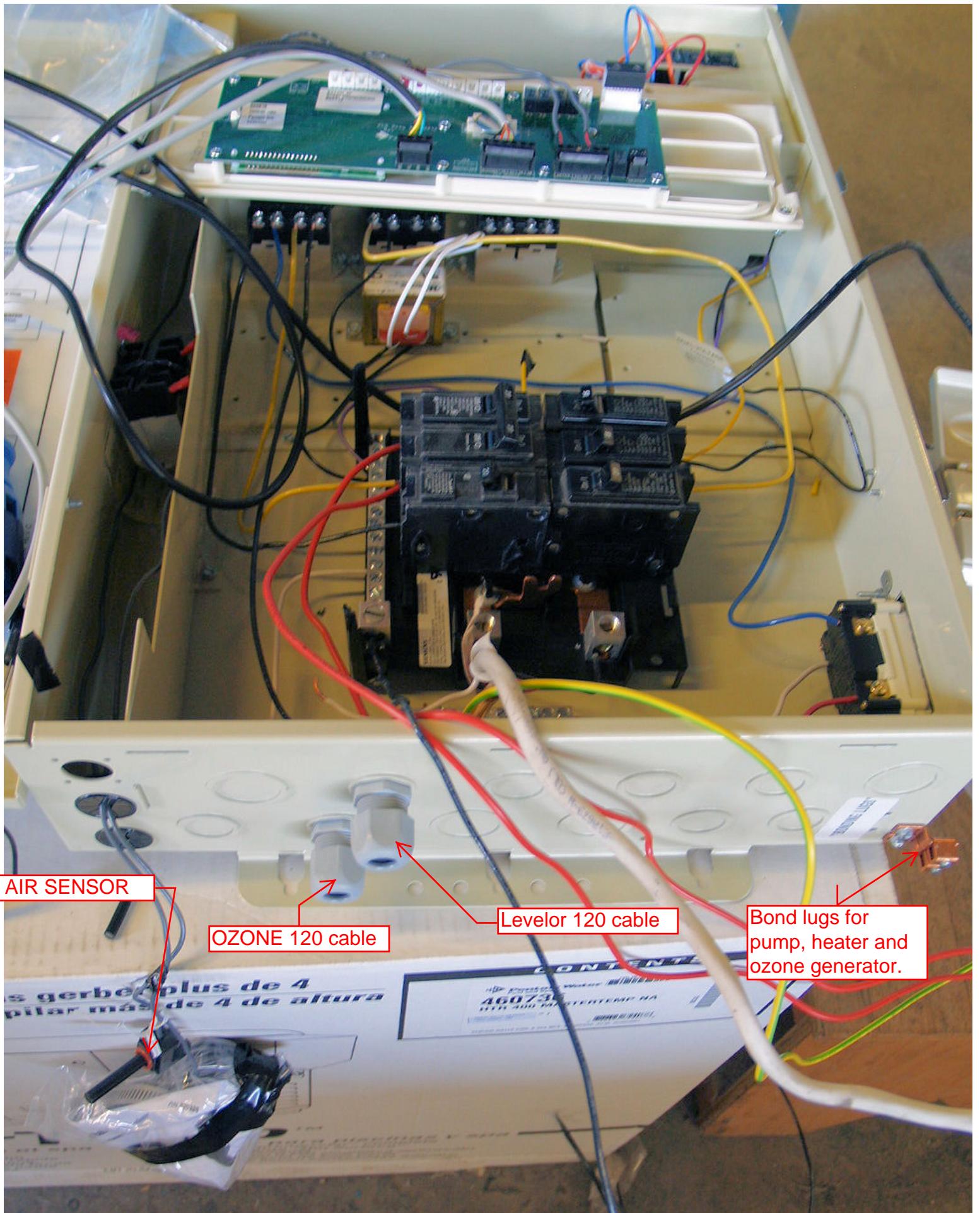
Whisperflow 4x160 control cable from pump. Plug into yellow and green tab on board. This is the same communication port as the indoor panel will use.

SPA SIDE
OUTDOOR IS 4
CONTROL TAB

Water Sensor

AIR SENSOR

Low Voltage
Heater control



AIR SENSOR

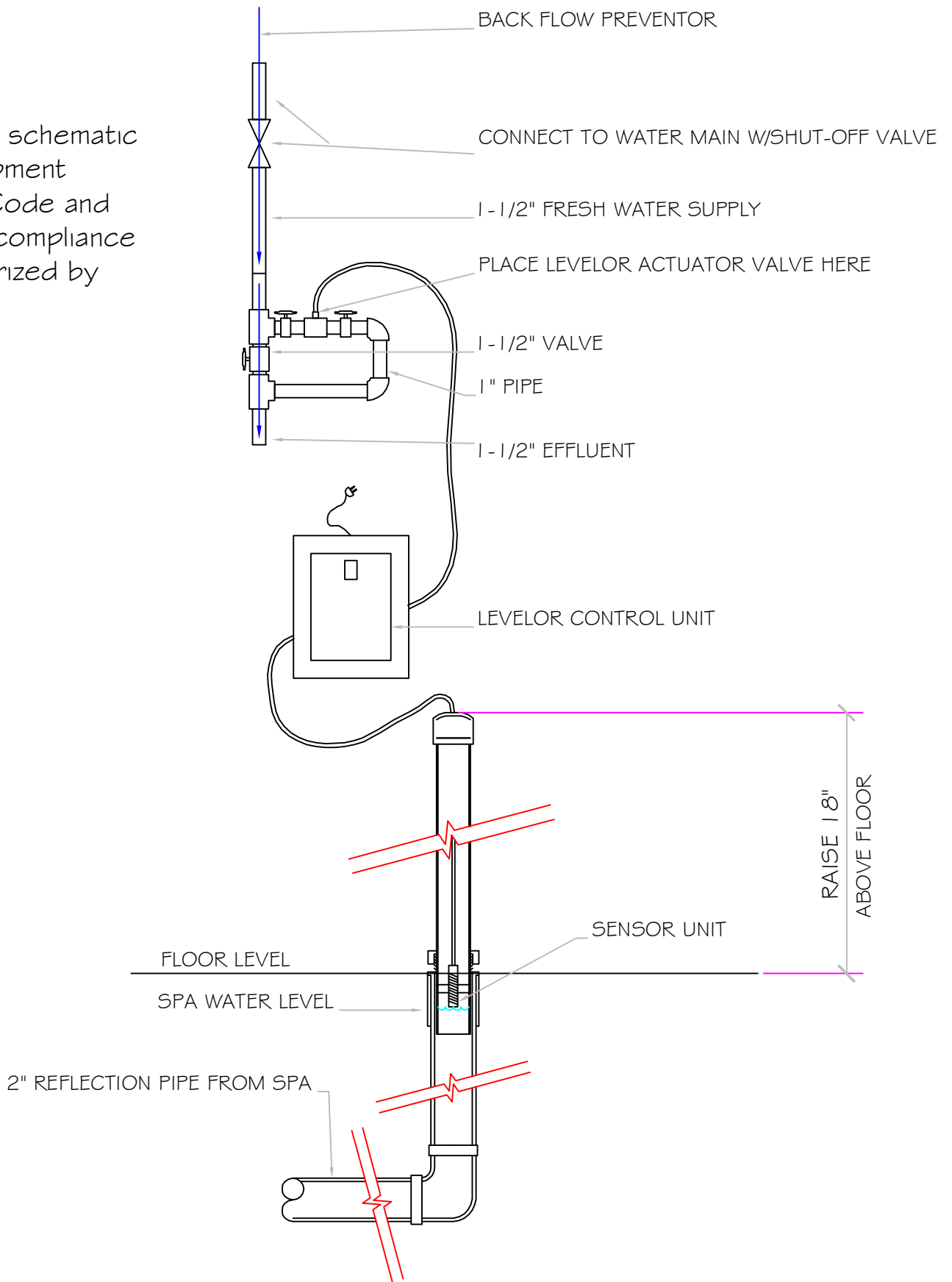
OZONE 120 cable

Levelor 120 cable

Bond lugs for pump, heater and ozone generator.

Note:

Conceptual schematic of spa equipment placement. Code and Mechanical compliance to be authorized by engineer.



WATER LEVEL CONTROL

ALL DIMENSIONS SUBJECT TO 1/4" TOLERANCES

NESPA ENTERPRISES INC.

2800 Richter Ave. Suite C Oroville, CA 95966

Office: (530) 534-9910

Fax: (530) 534-9915

E-Mail: sales@tiledspas.com Web Site: www.tiledspas.com



SIZE
A

DWG TYPE

H2O LEVEL CONTROL

DWG NO.

PLUMBING DETAILS

REV

0

SCALE

N/A

DATE

8/28/2007

SHEET

PAGE 1 OF 1

These drawings, concepts, and details contained herein are the original proprietary designs of NESPA ENTERPRISES, developed over many years of experience in the pool and spa industry and as such are protected by the copyright laws of the United States Government. Reproduction of any of the above without written permission to do so by NESPA ENTERPRISES, is illegal.

STANDARD NESPA IN-GROUND INSTALLATION INSTRUCTIONS **SET-UP AND EXCAVATION**

Prerequisites: Before installing your Nespa spa. You may be required to acquire a permit from your local State, County, and City building dept and or Health department. (Commercial jobs need Health Dept. Approval). Your spa installation must comply with the most current codes. (**Uniform Swimming Pool, Spas & Hot Tub Code 2006 (USPC 2006)**).

Spa drawings: Request from Nespa a current spa specific construction detail, plan and section, spa plumbing detail.

Delivery Access: Clearly determine the method of getting the spa to jobsite and into the hole. This may require the use of a crane, forklift, hoist, backhoe and/or manpower etc.

- 1) The following instructions are general guidelines and may not apply to your specific jobsite conditions. When excavating for your spa remember to provide for plumbing and light connection clearances. In order to determine how to excavate for your spa or swim spa, measure spas outside dimension (O.D.) and add minimum 3” to all sides. This 3” clearance is to accommodate jet and suction plumbing. This 3” clearance can change or be reduced upon request. Note: skimmer location, this area may have to be larger than 3”, if commercial 22”.
- 2) **Freeze Climates-** If the spa is place into a vault (typical of freeze climates) a standard 18” or more of clearance minimum from spa perimeter should be provided. This dead air space is for possible future access to spa plumbing in case of a freeze. Area drain is mandatory. **Ask your local installer** for his experienced opinion. Do not hesitate to call us because we want to be sure that your installation progresses as smoothly as possible. If you have questions call us. (888) 479-4677.
- 2) **Hole depth** is determined by spa’s outside height dimension. This height may vary depending if spa has skids or no skids. The spa lip may be finished or non- finished. How is the perimeter deck elevation transitioning to the spa? Focus on the finish surrounding deck elevations, thickness of the finish material on spa upper horizontal lip, equal to lip or under the spa lip. This material can be tile, stone, concrete or brick.
- 3) **Preplumb** the spa before it goes into the hole. If there are needs for electrical , bonding or control conduits run them as well before dropping in hole. Connect bond wire to niche would be best.
- 4) **Spa should sit on level 3 ½” thick reinforced concrete pad. Sweep debris off pad prior to dropping in hole.**
- 5) **Install spa** into the hole on top of concrete pad. Use the Eye bolts provided for crane, forklift etc. rigging. Do not hold onto pipes. Use caution with suction and jet plumbing when lowering into hole. **DO NOT STRESS FITTINGS!** Fill Spa with water and check for leaks prior to backfill.

- 6) **Check site reference** points for proper spa positioning (i.e., squaring to house, garage, etc.).
- 7) **Shim to level spa.** Shim with non-compression able material. Re square to house, or ref. point.
- 8) **Dry pack** with cement the gaps that have been created when shimming spa level.
- 9) **Connect pipes to tees** if spa is preplumb. Installers properly support your new plumbing from stressing spas preplumb fittings. After electrical conduit and bond wire is connected to light niche, water test spa before back filling with sand.
NOTE: All Nespa products are water tested prior to leaving factory.

ELECTRICAL:

- 1) All electrical connections to spa or equipment should comply with the most recent national electrical code (NEC), state and local codes.
- 2) Connect electrical conduit to light niche. This work should be done or reviewed by a licensed electrician.
- 3) To install spa light you will need to include inside the PVC conduit to the light niche a solid #8 coated copper wire. (If you are use brass conduit, internal bond wire is not required.) This bond wire should be pulled with the light cord at the same time. This bond wire needs to be attached to the internal bonding lug of the light niche. An approved encapsulate should be applied to bond wire connection in niche.
- 4) An external #8 copper wire shall be connected to the external bonding lug on the rear of the light niche. This copper wire can then be used for additional bonding requirements (i.e., handrails or any other metallic object within 5' of the spa.

PLUMBING:

- 1) **When plumbing a Nespa it is important to properly size the plumbing. We highly recommend that you follow the pump manufacturer's pipe sizing requirements and Uniform Swimming Pool, Spas & Hot Tub Code 2006 (USPC 2006). This code book is available at www.IAPMO.org or (909) 472 4100.**
- 2) The jet air venturi should be a Hartford loop design adjacent to spa shell and air entry point can be located next to spa or remotely at equipment.
- 3) Fill spa with water and test the system for leaks PRIOR to backfilling with sand.

SAND BACK FILL:

- 1) **With water in spa, back-fill around spa perimeter with dry plaster sand and wet wash with hydraulic attachment to hose. Let set for one hour and hydraulic dry again. Be sure water level in spa is at the highest level. Any questions please call us. (888) 479-4677.**
- 2) **If spa is free standing on elevated deck or a structure, it is important to fill spa with water and load area prior to installing coping or perimeter decking. If spa is installed in a vault situation a area drain is needed.**

NESPA ENTERPRISES INC.

2800 Richter Ave. Suite E

Oroville, CA 95966

Office: (888) 479-4677 Fax: (530) 534-9915

E-Mail: nespa@pacbell.net www.tiledspas.com

IN-GROUND

INSTALLATION

ALL DIMENSIONS SUBJECT TO 1/4" TOLERANCES

SCALE: 1/2" = 1'-0"

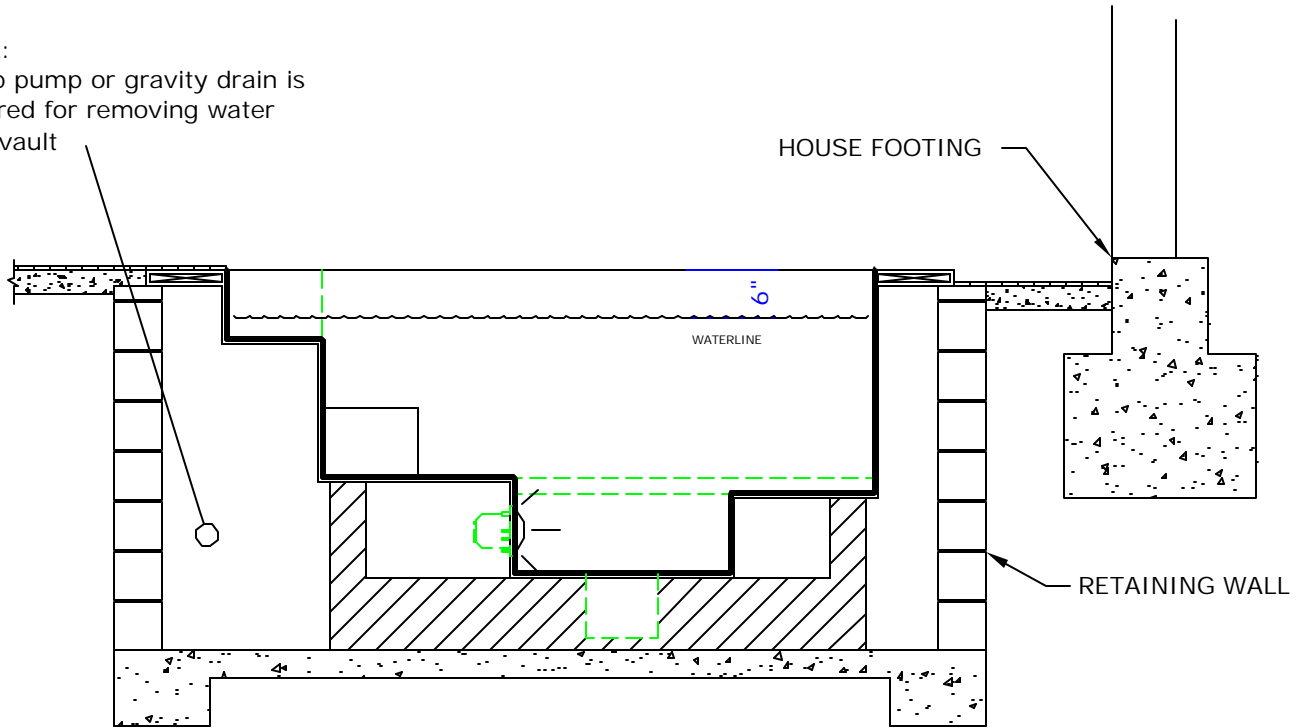
DATE: 3/27/02

JOB : STANDARD INSTALL

DW #: SI-1, SI-2

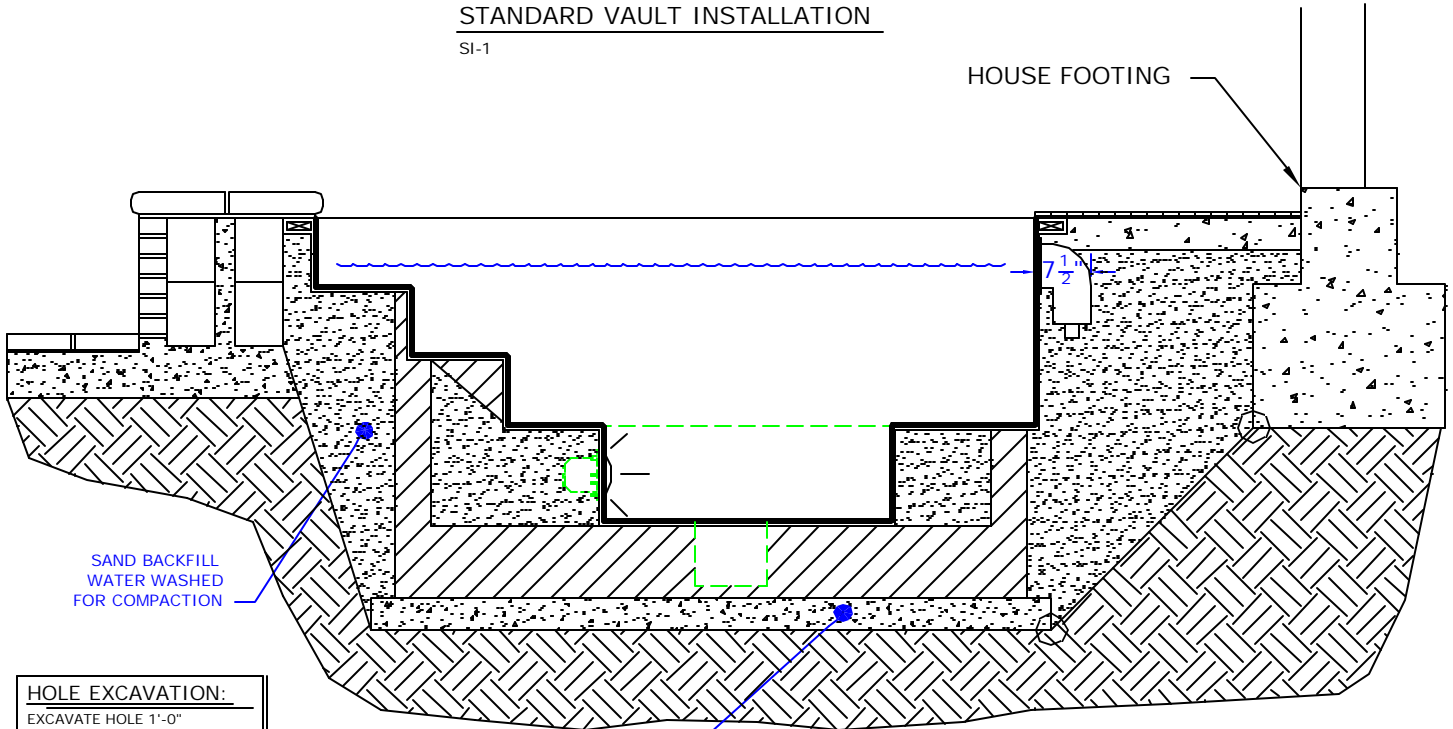
NOTE:

Sump pump or gravity drain is required for removing water from vault



STANDARD VAULT INSTALLATION

SI-1



SAND BACKFILL
WATER WASHED
FOR COMPACTION

HOLE EXCAVATION:
EXCAVATE HOLE 1'-0"
LARGER THAN THE OUTSIDE
DIAMETER (OD) OF SPA

4" CONCRETE SLAB
REINFORCED WITH
#10 MESH

STANDARD INGROUND INSTALLATION

SI-2

NOTE:

Footing can not surcharge spa.
Slope from bottom of slab to
nearest corner of house footing
must not exceed 1" = 1".



NESPA ENTERPRISES, Inc. LIMITED WARRANTY

This LIMITED WARRANTY covering NESPA products is extended to the ORIGINAL PURCHASER-USER BY NESPA ENTERPRISES Inc. (NESPA), 2800 Richter Ave. Unit E California 95965.

NESPA products are thoroughly inspected and tested prior to factory shipment. NESPA warrants to the ORIGINAL PURCHASER-USER that NESPA Spas and Swim Spas will be free of defect in workmanship, accessories and parts, provided said accessories and parts were manufactured by NESPA. NESPA, under this LIMITED WARRANTY, warrants only that its Spas and Swim Spas shall be structurally sound, shall retain their shape, and shall retain water for the warranty period. NESPA warrants the adhesion of tile to fiberglass for a period of five (5) years and structural soundness for ten (10) years. NESPA warrants epoxy grout adhesion for a period of three years. If any such defects appear and are reported within the warranty period, NESPA shall repair or replace such defective parts without charge if an inspection proves the claim.

The provisions of the LIMITED WARRANTY shall not apply to tile cracked, split, chipped or damaged after the product has left the factory, nor damage to tile caused by freezing nor to damage, defect, malfunction or failure to conform with the above warranty provisions where the damage, defect, malfunction or failure to conform was caused during shipment or by distributor or by unreasonable use by ORIGINAL PURCHASER-USER including improper water balance and improper sand pack or support.

This LIMITED WARRANTY shall not apply to any plumbing, equipment, or installation of spas and Swim Spas and shall not apply to any alterations made to or upon NESPA products except alterations made by NESPA employees or NESPA authorized representatives.

This LIMITED WARRANTY is expressly in lieu of all other warranties expressed or implied including the warranties of merchantability and fitness for use and all other obligations or liabilities on NESPA'S part, and NESPA neither assumes nor authorizes any other person to assume for NESPA any other liability in connection with the sale of this NESPA product. This LIMITED WARRANTY shall not apply to this NESPA product or any part thereof, which has been subject to accident, negligence, alteration, abuse or misuse. NESPA makes no warranty whatsoever with respect to accessories or parts not manufactured by NESPA.

The term "ORIGINAL PURCHASER-USER" as used in this LIMITED WARRANTY shall be deemed to mean that person for whom the NESPA product is originally installed.

The LIMITED WARRANTY provided herein and the obligations and liabilities of NESPA hereunder are exclusive and are in lieu of, and buyer and original PURCHASE-USER hereby waive all other remedies, warranties, guarantees or liabilities, expressed or implied, arising by law or otherwise (including without limitation and obligations of NESPA with respect to fitness, merchantability, and consequential damages) or whether or not occasioned by NESPA'S negligence.

This LIMITED WARRANTY shall not be extended, altered or varied except by a written instrument signed by NESPA and original PURCHASER-USER.