

PLAN APPROVAL DOCUMENTATION

DRAWING REVISION HISTORY

SHEET 1 - SD (Spa Detail)

REV NOTE: 04-23 Changed Main Drain and Skid Configuration

REV NOTE: 05-02 Changed Spa Size & skid configuration

REV NOTE: 06-10 Moved Steps 2" Down

SHEET 2 - SD (Spa Section)

REV NOTE: 04-23 Changed Main Drain and Skid Configuration

REV NOTE: 05-02 Changed Spa Size & skid configuration

SHEET 3 - PD (Suction Plumbing Detail)

REV NOTE: 04-23 Changed Main Drain and Skid Configuration

REV NOTE: 06-10 Changed Drains and Suctions

SHEET 4 - PD (Return Plumbing Detail)

REV NOTE: 04-23 Changed Main Drain and Skid Configuration

SHEET 5 - TD (Tile Detail)

REV NOTE: 05-14 Added Tile Detail

REV NOTE: 06-10 Changed Tile Selection

REV NOTE: 06-24 Changed Tile Selection and grout

SHEET 6 - Equipment

REV NOTE: 05-09 Added Equipment Detail

I approve the above drawings _____ Date: _____

Any changes to these plans from here forward shall be directed in writing to Nespa.

SPA FABRICATION AUTHORIZATION

Nespa's engineering and structural manufacturing departments may find it necessary to make slight adjustments (= 1") to your spa.

This may include the size of the spa (OD/ID), tile cuts, depths, jet location, bench steps etc. These adjustments must be made in the primary stages of building the spa. The adjustments are generally made to ad structural and aesthetic integrity to the vessel. IE: balance of supporting gussets (exterior) and less tile cuts/ symmetrical cuts, grout lines, etc. (interior)

Please initial next to the following number that describes your project needs.

- _____ 1. YES, I understand adjustments need to be made. Nespa will use their expertise to make these adjustments as needed. I give them the authority to make changes. I will receive final accurate drawings prior to receipt of spa or spa hole construction (if changes were made to the size)
- _____ 2. NO, No changes can be made even under 1". Dimensions are fixed. More tile cuts may be needed, Structural supports may be altered to accommodate.
- _____ 3. Nespa will need to contact us for any changes to spa dimensions prior to continued spa fabrication.

NESPA ENTERPRISES INC.

2800 Richter Ave. Suite C Oroville, CA 95966

Office: (530) 534-9910

Fax: (530) 534-9915

E-Mail: sales@tiledspas.com Web Site: www.tiledspas.com



SIZE
A

DWG NAME

OXFORD SUITES

DWG TYPE

REV

SCALE

N/A

DATE

6/24/2008

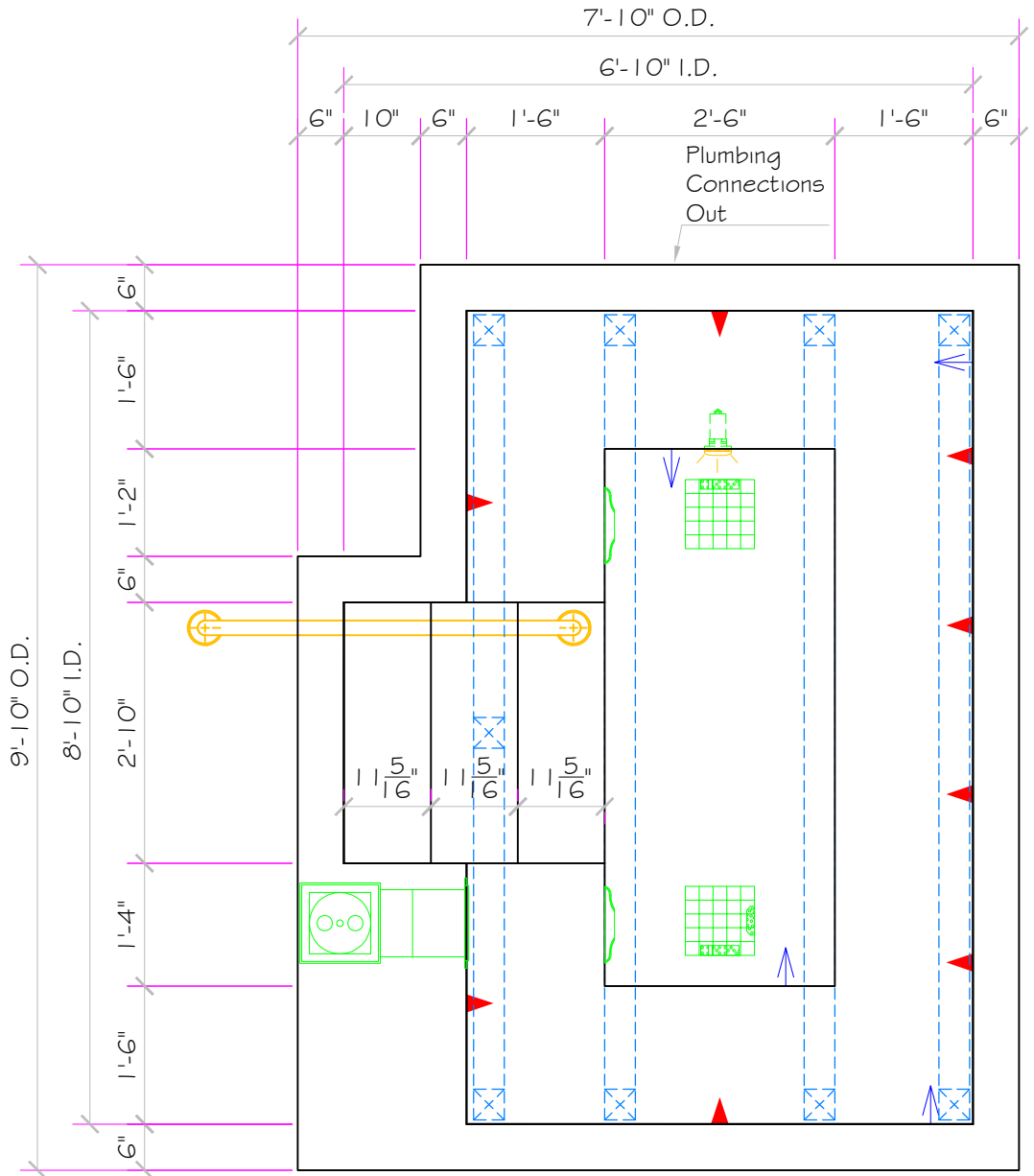
SHEET

Revision History

These drawings, concepts, and details contained herein are the original proprietary designs of NESPA ENTERPRISES, developed over many years of experience in the pool and spa industry and as such are protected by the copyright laws of the United States Government. Reproduction of any of the above without written permission to do so by NESPA ENTERPRISES, is illegal.

SPECIFICATIONS	
DRY WEIGHT:	3000 LBS.
TOTAL WEIGHT:	11294 LBS.
WATER:	994.8 GAL.
VOLUME:	133 Cu.Ft.
WEIGHT:	8294 LBS.
SURFACE AREA:	52 SQ. FT.
IAPMO#:	1138
FDA#:	2030305

SKID SUPPORT STRUCTURE* BONDED TO SPA	
	*SKIDS SUPPLIED BY NESPA
LIGHT NICHE	
	PAL 2000 LV LIGHT, 12 VOLT 50 WATT, U.L. APPROVED
SKIMMER	
	HAYWARD SP-108#FVE SURFACE SKIMMER W/ EQUALIZER NSF APPROVED
EQUALIZER	
	4" EQUALIZER HydroAir #10-6764 w/ 10-6706 cover 5.0 SQ. IN. OPEN AREA Max Flow 31 GPM @ 2fps COMPLIES W/ ANSI CODE ASME A112.19.8-07 UL APPROVED
SUCTION	
	5" HIGH FLOW SUCTIONS HydroAir #10-6200 w/ 10-6011 anti-vortex cover 12.9 SQ. IN. OPEN AREA Max Flow 80 GPM @ 2fps (anti-vortex @ 6fps) COMPLIES W/ ANSI CODE ASME A112.19.8-07 UL APPROVED
JET	
	HYDRO INLETS 1-1/2" WATER - 1-1/2" AIR HYDROAIR #10-5100 COMPLIES W/ ANSI CODE ASME A112.19.8-07 UL APPROVED
FILL	
	INLET FITTINGS 1-1/2" WALL TYPE W/ EYEBALL HYDROAIR #10-3500 COMPLIES W/ ANSI CODE ASME A112.19.8-07 UL APPROVED
MAIN DRAIN	
	WATERWAY # 640-4700 9" X 9" FRAME, 39.75 SQ. IN. OPEN AREA Max Flow 235 GPM @ 2fps COMPLIES W/ ANSI CODE ASME A112.19.8-07 - UL APPROVED
SIDEWALL SUCTION	
	Paramount SDX 10" HIGH FLOW SAFETY DRAIN 200 GPM AT 6 FT/SEC Water Velocity, Meets Or Exceeds Current ASME/ANSI A112.19.8 2007 National Standards



ALL DIMENSIONS SUBJECT TO 1/4" TOLERANCES

NESPA ENTERPRISES INC.
2800 Richter Ave. Suite C Oroville, CA 95966
Office: (530) 534-9910 Fax: (530) 534-9915
E-Mail: sales@tiledspas.com Web Site: www.tiledspas.com



SIZE A DWG NAME

OXFORD SUITES

DWG TYPE SD

SCALE 1/2" = 1'-0"

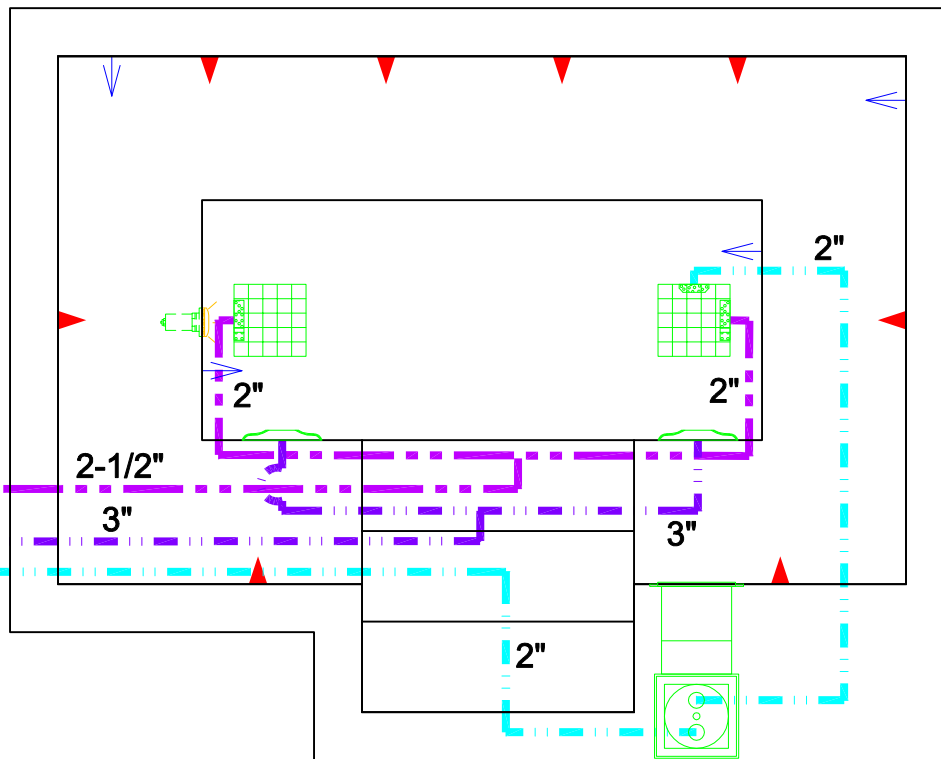
DATE 6/11/2008

SHEET

PAGE 1 OF 8

These drawings, concepts, and details contained herein are the original proprietary designs of NESPA ENTERPRISES, developed over many years of experience in the pool and spa industry and as such are protected by the copyright laws of the United States Government. Reproduction of any of the above without written permission to do so by NESPA ENTERPRISES, is illegal.

2-1/2" Filter Suction
 3" Booster Suction
 2" Skimmer Suction



ALL DIMENSIONS SUBJECT TO 1/4" TOLERANCES

These drawings, concepts, and details contained herein are the original proprietary designs of NESPA ENTERPRISES, developed over many years of experience in the pool and spa industry and as such are protected by the copyright laws of the United States Government. Reproduction of any of the above without written permission to do so by NESPA ENTERPRISES, is illegal.

NESPA ENTERPRISES INC.
 2800 Richter Ave. Ste. C Oroville, CA 95966
 Office: (530) 534-9910 Fax: (530) 534-9915
 E-Mail: sales@tiledspas.com Web Site: www.tiledspas.com

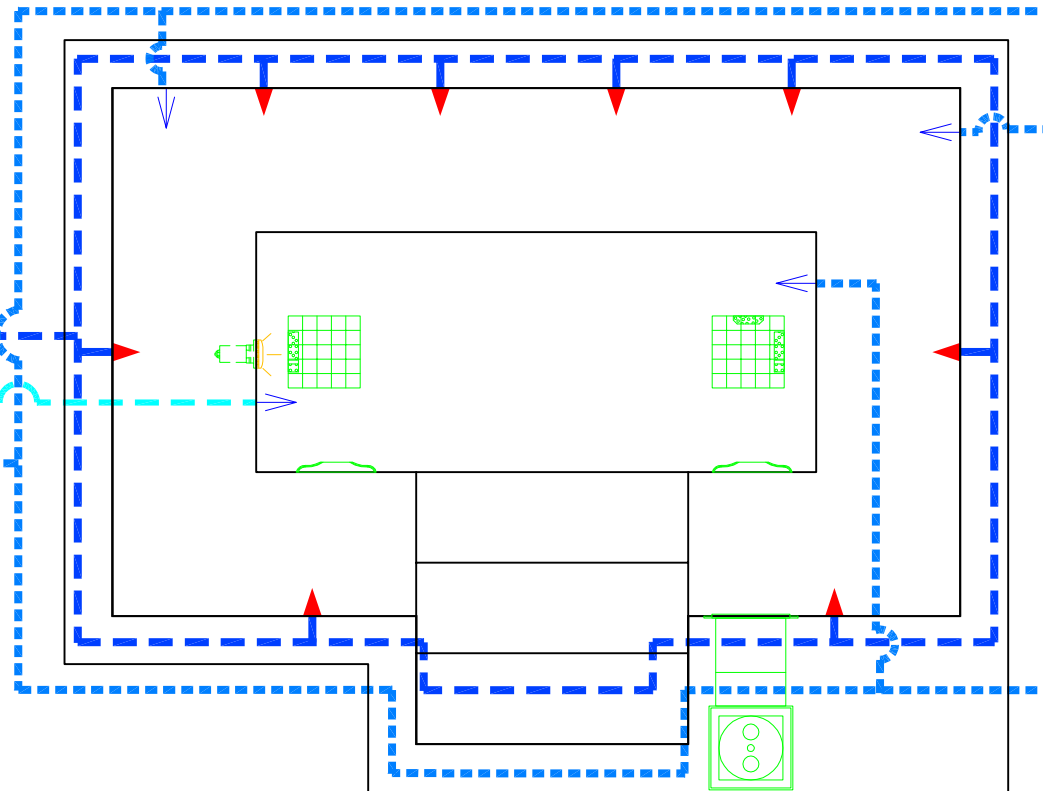


SIZE A	DWG NAME OXFORD SUITES	DWG TYPE PD Suction
SCALE 1/2" = 1'	DATE 6/10/2008	SHEET PAGE 3 OF 8

3" Booster Return

1" Water Fill

2" Filter Return



ALL DIMENSIONS SUBJECT TO 1/4" TOLERANCES

These drawings, concepts, and details contained herein are the original proprietary designs of NESPA ENTERPRISES, developed over many years of experience in the pool and spa industry and as such are protected by the copyright laws of the United States Government. Reproduction of any of the above without written permission to do so by NESPA ENTERPRISES, is illegal.

NESPA ENTERPRISES INC.
2800 Richter Ave. Ste. C Oroville, CA 95966
Office: (530) 534-9910 Fax: (530) 534-9915
E-Mail: sales@tiledspas.com Web Site: www.tiledspas.com



SIZE
A

DWG NAME

OXFORD SUITES

DWG TYPE

PD Return

SCALE 1/2" = 1'

DATE 6/10/2008

SHEET

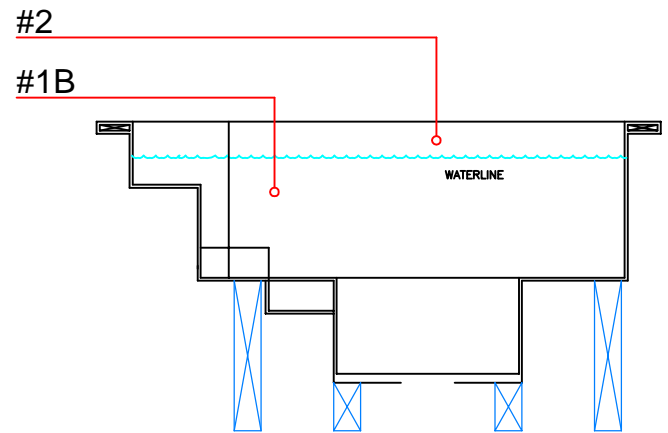
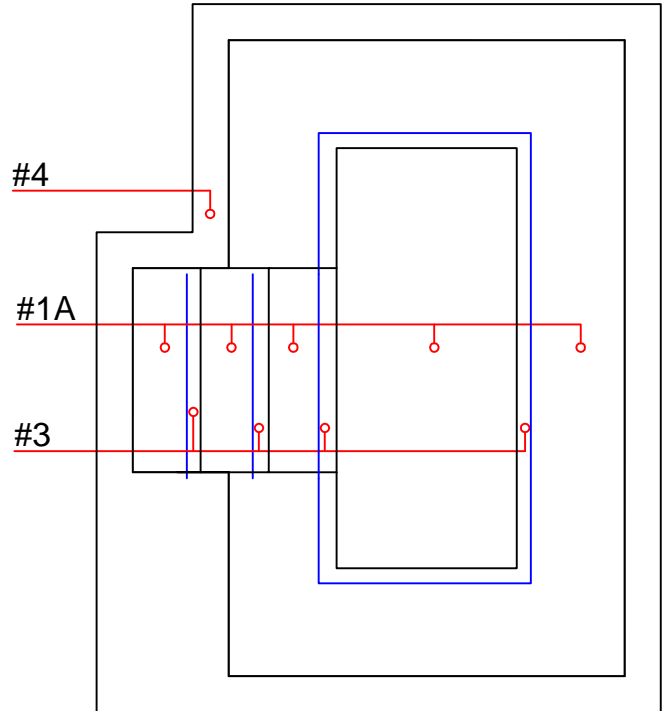
PAGE 4 OF 8

- #1A - FIELD TILE (Seat & Steps) DalTile - D144 - Artisan Brown - 2 x 2
- #1B - FIELD TILE (Walls): DalTile - D169 - Waterfall - 2 x 2
- #2 - WATERLINE (optional): DalTile LUM11 / Luminous Opal
- #3 - BENCH & STEP EDGES DalTile - D169 - Waterfall - 2 x 2
(optional):
- #4 - TILED LIP (optional): DalTile - D144 - Artisan Brown - 2 x 2

Date: _____

Approval: _____

- #1 - GROUT: Walls - Customs - 301/Arctic Ice
- #2 - GROUT: Seat & Steps - Tec 982 / Summer Wheat
- #3 - GROUT: Tec 945 / Light Buff
- #4 - GROUT: Tec - 301/Arctic Ice



ALL DIMENSIONS SUBJECT TO 1/4" TOLERANCES

NESPA ENTERPRISES INC.

2800 Richter Ave. Suite C Oroville, CA 95966

Office: (530) 534-9910

Fax: (530) 534-9915

E-Mail: sales@tiledspas.com Web Site: www.tiledspas.com



SIZE
A

DWG NAME

OXFORD SUITES

DWG TYPE

TD Tile

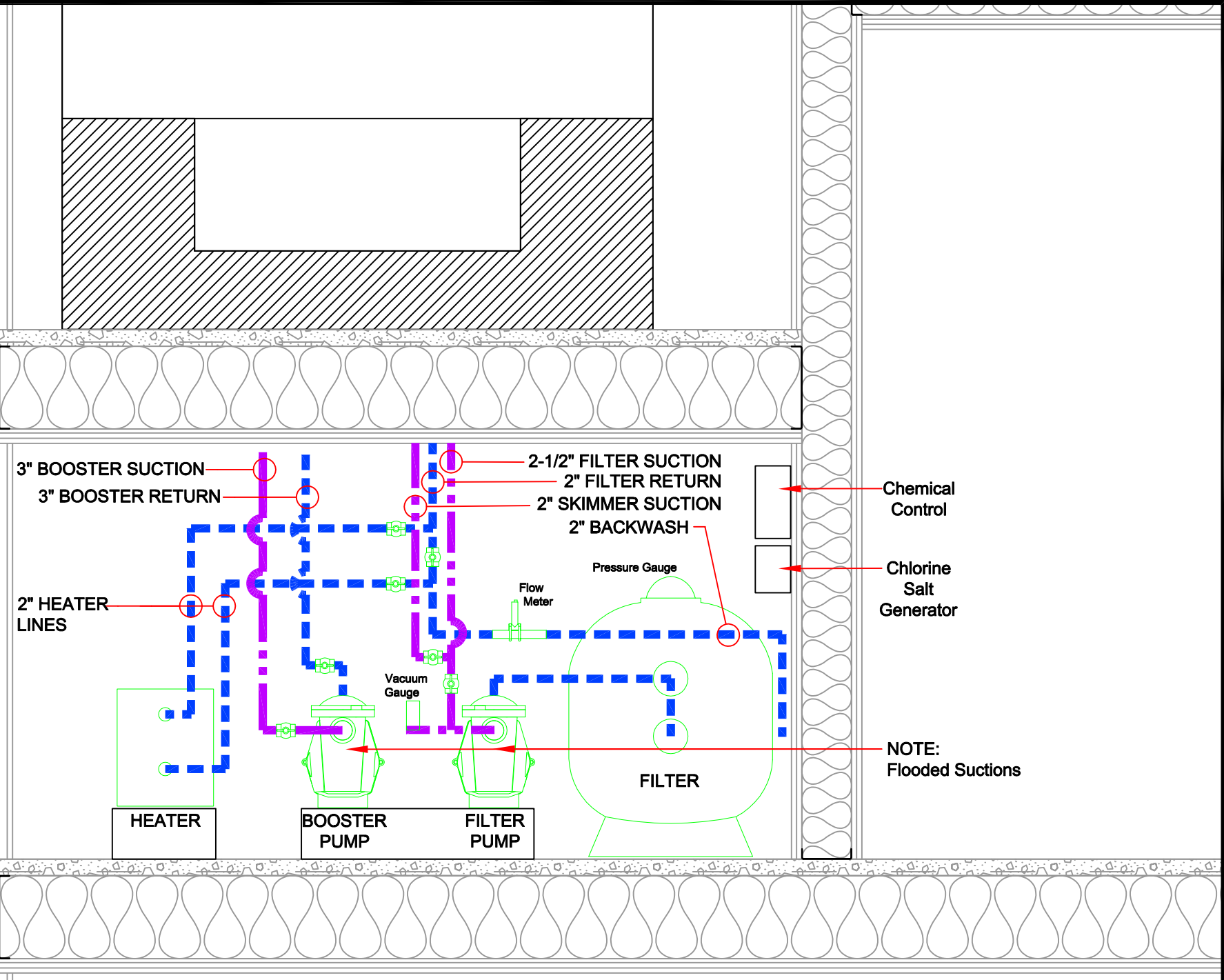
SCALE 3/8" = 1'-0"

DATE 6/24/2008

SHEET

PAGE 5 OF 8

These drawings, concepts, and details contained herein are the original proprietary designs of NESPA ENTERPRISES, developed over many years of experience in the pool and spa industry and as such are protected by the copyright laws of the United States Government. Reproduction of any of the above without written permission to do so by NESPA ENTERPRISES, is illegal.



6th FLOOR

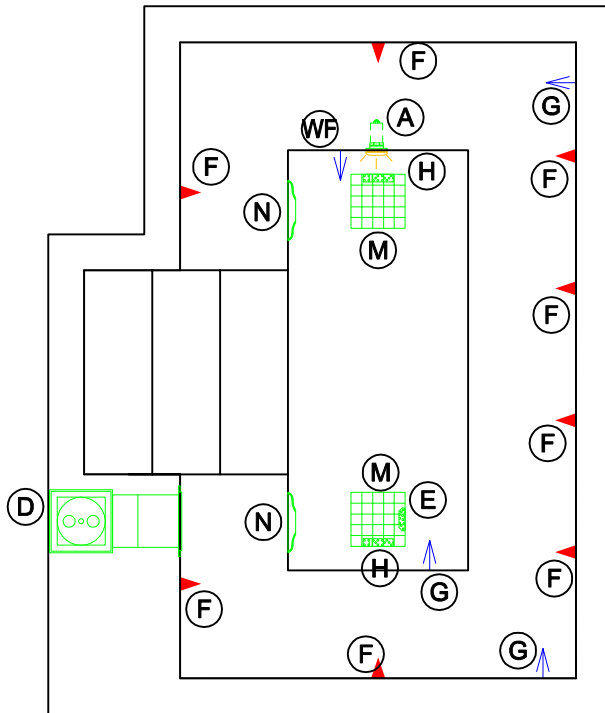
These drawings, concepts, and details contained herein are the original proprietary designs of NESPA ENTERPRISES, developed over many years of experience in the pool and spa industry and as such are protected by the copyright laws of the United States Government. Reproduction of any of the above without written permission to do so by NESPA ENTERPRISES, is illegal.

NESPA ENTERPRISES INC.
 2800 Richter Ave. Ste. C Oroville, CA 95966
 Office: (530) 534-9910 Fax: (530) 534-9915
 E-Mail: sales@tiledspas.com Web Site: www.tiledspas.com



SIZE A	DWG NAME OXFORD SUITES
SCALE N/A	DATE 6/10/2008

DWG TYPE Equipment LAYOUT
SHEET PAGE 6 OF 8



ITEM	DESCRIPTION	MANUFACTURER	CATALOG NO.	QTY.
A	PAL 2000 LV LIGHT, 12 VOLT 50 WATT, U.L. APPROVED	PAL 2000	PAL 2000	1
D	SURFACE SKIMMER W/ EQUALIZER, NSF APPROVED	HAYWARD	SP-1084 FVE	1
E	EQUALIZER 4" 3.61 SQ.IN. OPEN AREA, COMPLIES W/ ANSI CODE A112.19	HYDROAIR	10-6806	1
F	HYDRO INLETS, 1 1/2" WATER, 1 1/2" AIR	HYDRO-AIR	10-5100	8
G	INLET FITTINGS, 1 1/2", WALL TYPE, W/ EYEBALL	HYDRO AIR	10-3500	3
H	5" HIGH FLOW SUCTIONS 8.39 SQ. IN. OPEN AREA 208 GPM AT 1.5 FT/SEC WATER VELOCITY, COMPLIES W/ ANSI CODE A112.19 UL APPROVED	WATERWAY	640-3850	2
M	MAIN DRAIN GRATE, 9" X 9" FRAME, 49 SQ. IN. OPEN AREA, 299 GPM @1 1/2 FT/SEC	PAC FAB	54-2019	2
N	10" HIGH FLOW SAFETY DRAIN 200 GPM AT 6 FT/SEC Water Velocity, Meets Or Exceeds Current ASME/ANSI A112.19.8 2007 National Standards	PARAMOUNT	SDX	2
WF	Waterfill Inlet Fitting	HYDRO AIR	10-6806	1

ALL DIMENSIONS SUBJECT TO 1/4" TOLERANCES

These drawings, concepts, and details contained herein are the original proprietary designs of NESPA ENTERPRISES, developed over many years of experience in the pool and spa industry and as such are protected by the copyright laws of the United States Government. Reproduction of any of the above without written permission to do so by NESPA ENTERPRISES, is illegal.

NESPA ENTERPRISES INC.

2800 Richter Ave. Ste. C Oroville, CA 95966

Office: (530) 534-9910

Fax: (530) 534-9915

E-Mail: sales@tiledspas.com Web Site: www.tiledspas.com



SIZE
A

DWG NAME

OXFORD SUITES

DWG TYPE

Equipment

SCALE 3/8" = 1'

DATE 6/10/2008

SHEET

PAGE 7 OF 8

Oxford Suites Hotel - Bend, Oregon

Equipment Schedule

Surface Area	60 Square Feet
Volume	1100 Gallons
Flow Rate	50 GPM
Turnover Rate	22-Minutes

Equipment	Description	Manufacturer	Model
Circulation Pump	50 GPM @ 60 Ft Head 1/2 HP, 208 Volt, 3.2 Amps 3-Phase, 2" Discharge Unit with Pump Strainer	Pentair Whisperflow	WFK-2
Hydrotherapy Pump	145 GPM @ 40 Ft Head 2 HP, 208 Volt, 7.1 Amps 3-Phase, 2" Discharge Unit with Pump Strainer	Pentair Whisperflow	WFK-8
Filter	Sand Filter 3.14 Sq Ft Filter Area Rated Max Flow Rate @ 20 GPM/Sq Ft Actual Max Flow Rate @ 15 GPM/Sq Ft	Pentair Triton	TR-60
Heater	24 KW, 208 Volt, 67 Amps, 3-Phase	Coates	CPH12424
Flow Meter	2 1/2" 15-70 GPM Scale	Blue White	F30200PR
Pressure Gauge	0-60 PSI, 2 1/2" Diameter	Ashcroft	B20PA02RK60
Vacuum Gauge	0-30", 2 1/2" Diameter	Ashcroft	GB20PA02LKVAC
Underwater Light	50 W, 12 V	Horizon Powerite Pal-2000	56-330-1000
Automated Water Chemistry Controller	Stranrol Set Point ORP Controller automated chlorine and PH feed	US Filter/Siemens	Set Point
Chlorine Feed Pump	Peristaltic, 10 GPM Max with adjustable flow	Stenner	45M2
PH Feed Unit	Stranrol CO2 Feed Unit with adjustable feed rate 0-30 Standard Cubic Feet/Hour	US Filter/Siemens	CO2-3

These drawings, concepts, and details contained herein are the original proprietary designs of NESPA ENTERPRISES, developed over many years of experience in the pool and spa industry and as such are protected by the copyright laws of the United States Government. Reproduction of any of the above without written permission to do so by NESPA ENTERPRISES, is illegal.

NESPA ENTERPRISES INC.
 2800 Richter Ave. Ste. C Oroville, CA 95966
 Office: (530) 534-9910 Fax: (530) 534-9915
 E-Mail: sales@tiledspas.com Web Site: www.tiledspas.com



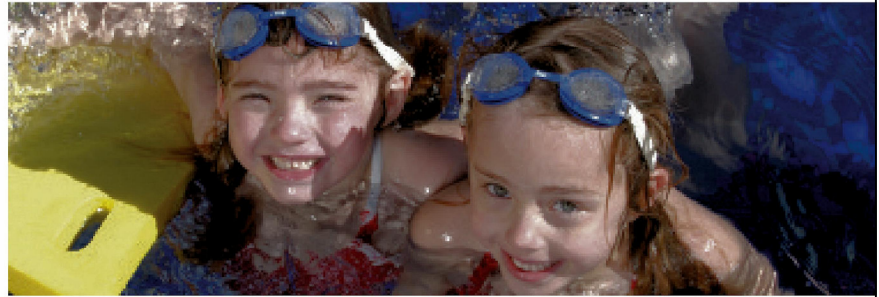
SIZE
A
SCALE
N/A

DWG NAME
OXFORD SUITES
DATE 6/10/2008

DWG TYPE
Equipment (2)
SHEET
PAGE 8 OF 8



HIGH FLOW SAFETY DRAIN



Paramount Pool & Spa Systems' new SDX High Flow Safety Drain™ boasts a flow rate of 200gpm compatible with pumps up to 3hp. Installed with at least 2 SDX drains teed together to comply with split suction codes, SDX serves as a wall drain and also as a floor drain if debris removal is not a concern. SDX is available in eight colors for Concrete, Vinyl, and One-Piece pools.

For more information, call Paramount Pool & Spa Systems at 1.800.621.5886 or contact your local sales representative.

FEATURES AND BENEFITS

Available for concrete, vinyl and fiberglass pools and spas

High Flow Rating for use with large HP or even multiple pumps:

- Two-SDX drains - 200 GPM systems
- Three-SDX drains - 300 GPM systems
- Four-SDX drains - 400 GPM systems

Each SDX drain protects against hair and body entrapment

- Patent-pending ribs achieve high flow with sixty little drains
- Dome shape to prevent a seal with a swimmer
- Anti-vortex shield to block contact with direct-suction

Missing cover security complies with next generation safety standards

- Stainless steel security screws
- Secondary support plate secured to protect the sump and fittings

Exceeds anti-entrapment requirements of:

- ASME/ANSI A112.19.8M-1987 ~ Tested and Listed by IAPMO, a nationally recognized testing laboratory (NRTL) accredited by ANSI
- Uniform Swimming Pool, Spa and Hot Tub Code™
- International Residential Code, Section AG106.2 ~ Suction Fittings

Included with the MDX Debris Removal System™ as a second point of suction

Available in eight colors to blend with any surface



www.1Paramount.com 1.800.621.5886

ALL DIMENSIONS SUBJECT TO 1/4" TOLERANCES

NESPA ENTERPRISES INC.
 2800 Richter Ave. Suite C Oroville, CA 95966
 Office: (530) 534-9910 Fax: (530) 534-9915
 E-Mail: sales@tiledspas.com Web Site: www.tiledspas.com



SIZE A	DWG NAME OXFORD SUITES	DWG TYPE Suction Spec
SCALE custom	DATE 6/11/2008	SHEET PAGE 1 OF 1

These drawings, concepts, and details contained herein are the original proprietary designs of NESPA ENTERPRISES, developed over many years of experience in the pool and spa industry and as such are protected by the copyright laws of the United States Government. Reproduction of any of the above without written permission to do so by NESPA ENTERPRISES, is illegal.