

NESPA ENTERPRISES INC.

2800 Richter Ave. Suite E  
Oroville, CA 95965

Office: (888) 479-4677 Fax: (530) 534-9915  
E-Mail: sales@tiledspas.com www.tiledspas.com

CUSTOM

SKID DETAIL

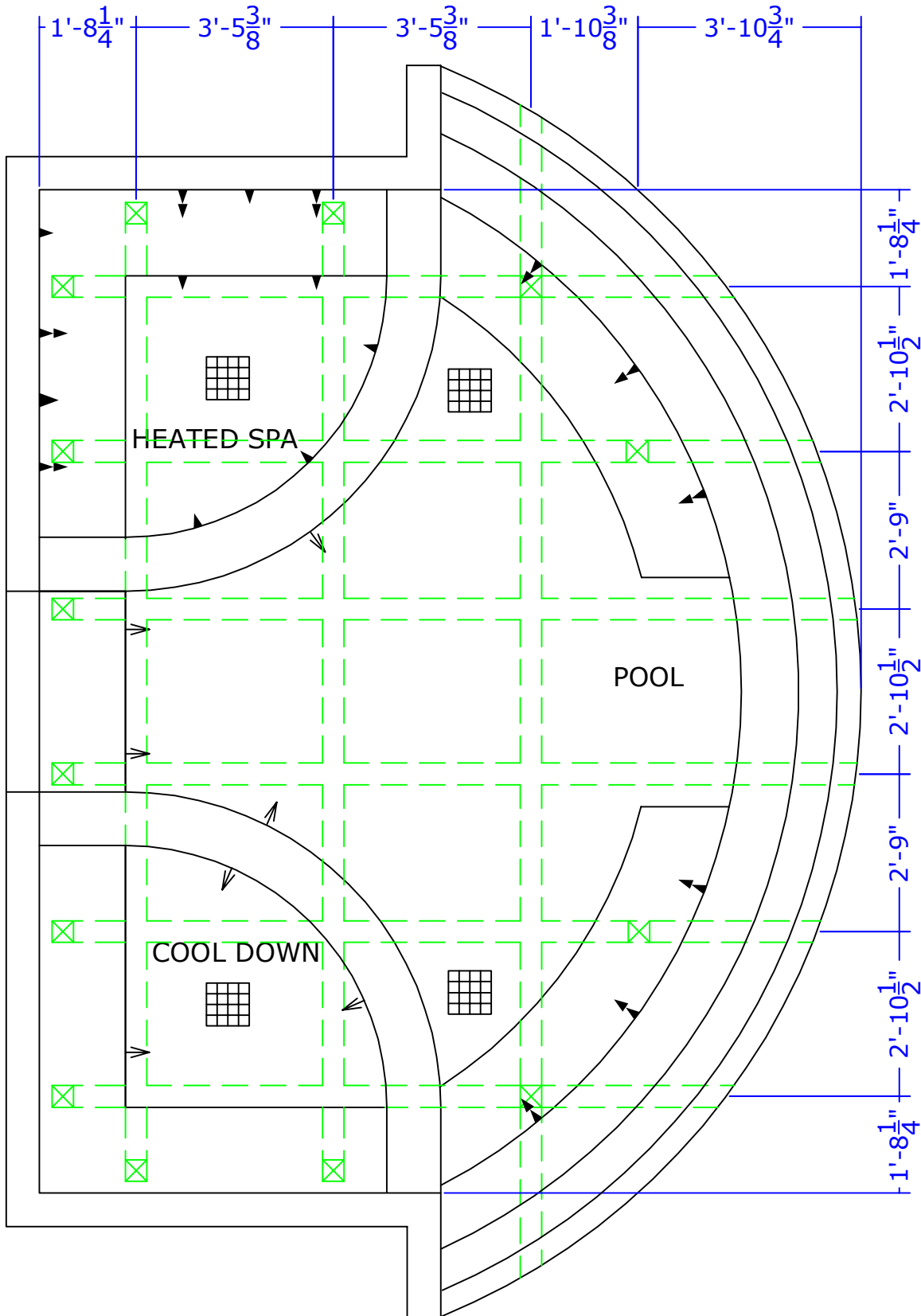
\*ALL DIMENSIONS SUBJECT TO 1/4" TOLERANCES\*

SCALE: 3/8" = 1'-0"

DATE: 10/08/02

JOB: MORRISON

DR#: MOR-SPA-SKD6



These drawings, concepts, and details contained herein are the original proprietary designs of NESPA ENTERPRISES, developed over many years of experience in the pool and spa industry and as such are protected by the copyright laws of the United States Government. Reproduction of any of the above without written permission to do so by NESPA ENTERPRISES, is illegal.

**NESPA ENTERPRISES INC.**

2800 Richter Ave. Suite E  
Oroville, CA 95965

Office: (888) 479-4677 Fax: (530) 534-9915  
E-Mail: sales@tiledspas.com www.tiledspas.com

**CUSTOM**

**SPA DETAIL**

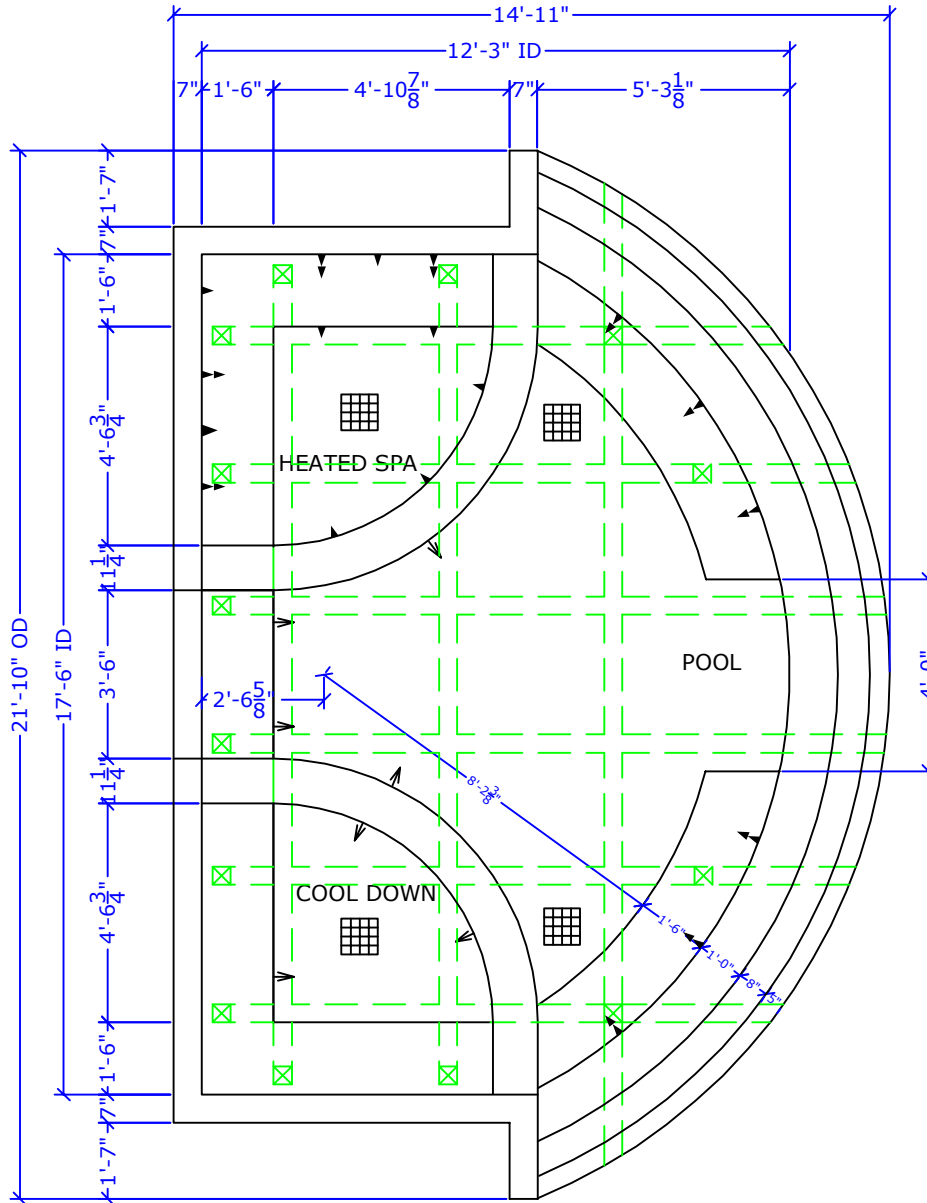
\*ALL DIMENSIONS SUBJECT TO 1/4" TOLERANCES\*

SCALE: 1/4" = 1'-0"

DATE: 10/08/02

JOB: MORRISON

DR#: MOR-SPA-SD6



OVER ALL	
PERIMETER:	67'-0"
WATER SURFACE AREA:	286 SQ. FT.
WATER DEPTHS:	1'-1 0" - 3'-0"
CAPACITY:	4605 GALLONS
COMBINED WEIGHT:	60,000 LBS.
SPA	
PERIMETER:	22'-0"
WATER SURFACE AREA:	32 SQ. FT.
WATER DEPTHS:	2'-8"
CAPACITY:	510 GALLONS
COOL DOWN	
PERIMETER:	22'-0"
WATER SURFACE AREA:	32 SQ. FT.
WATER DEPTHS:	2'-8"
CAPACITY:	510 GALLONS
POOL	
PERIMETER:	81'-0"
SURFACE AREA:	192 SQ. FT.
WATER DEPTHS:	1'-1 0" - 3'-0"
CAPACITY:	3300
WEIR LENGTH:	24'-6"
BASIN	
PERIMETER:	54'-6"
SURFACE AREA:	27.5 SQ. FT.
WATER DEPTHS:	1'-3 1/2"
MAXIMUM CAPACITY:	285 GALLONS
CAPACITY: IN CU. FT.	35 CU. FT.

**TYP MFG SUPPORT STRUCTURE\* BONDED TO SPA**

\*SKIDS SUPPLIED BY NESPA

**MAIN DRAIN**

9" X 9"

**LIGHT NICH**

**SPECIFICATIONS**

DRY WEIGHT: 15000 lbs.  
IAPMO #: 1138  
FDA #: 2030305

**NOTE:**

ALL SPA PLUMBING IS INSTALLED AND PRESSURE TESTED AT FACTORY PRIOR TO SHIPPING

**NESPA ENTERPRISES INC.**

2800 Richter Ave. Suite E  
Oroville, CA 95965

Office: (888) 479-4677 Fax: (530) 534-9915  
E-Mail: sales@tiledspas.com www.tiledspas.com

**CUSTOM**

**ENTRY DETAIL**

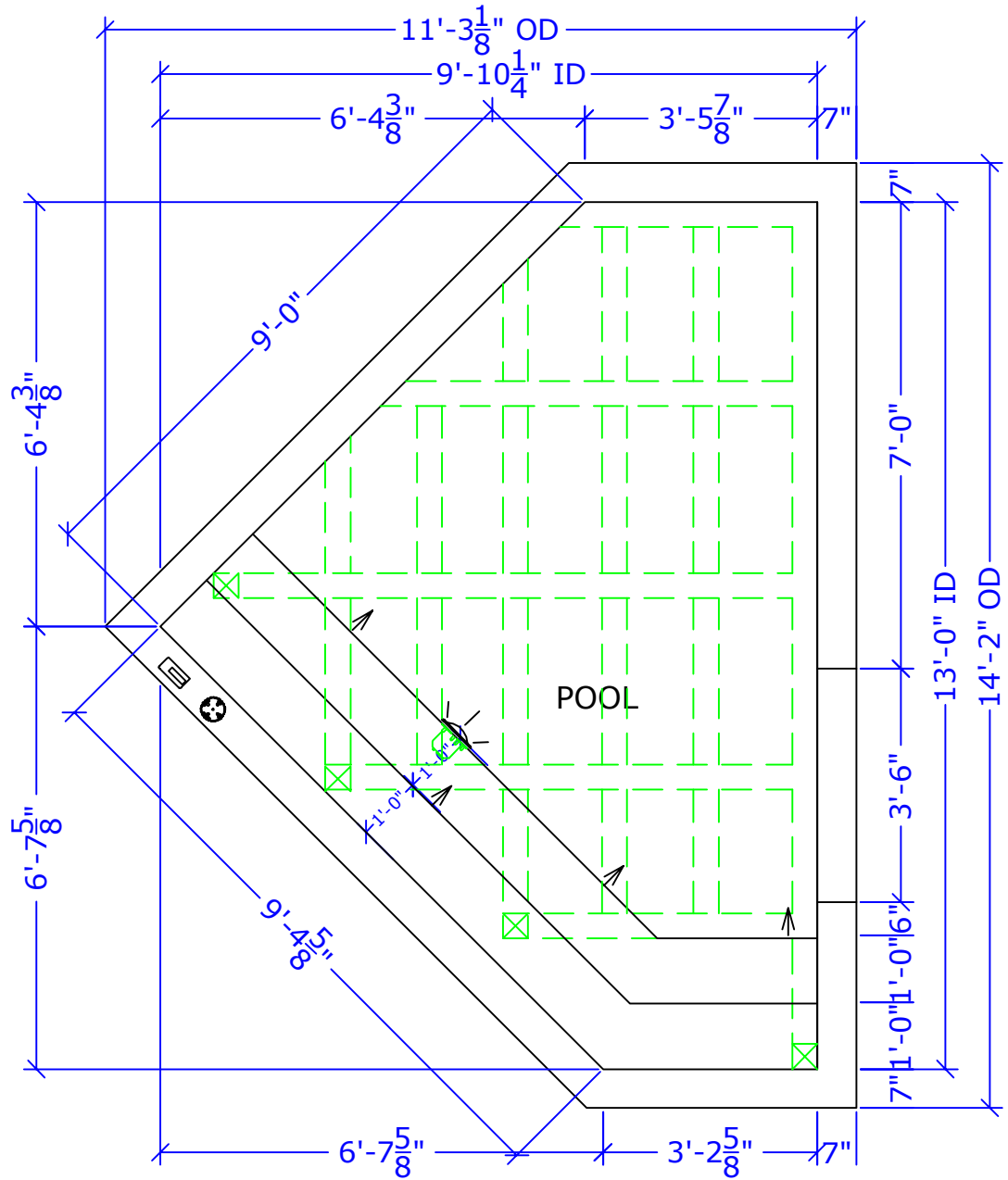
\*ALL DIMENSIONS SUBJECT TO 1/4" TOLERANCES\*

SCALE: 3/8" = 1'-0"

DATE: 10/04/02

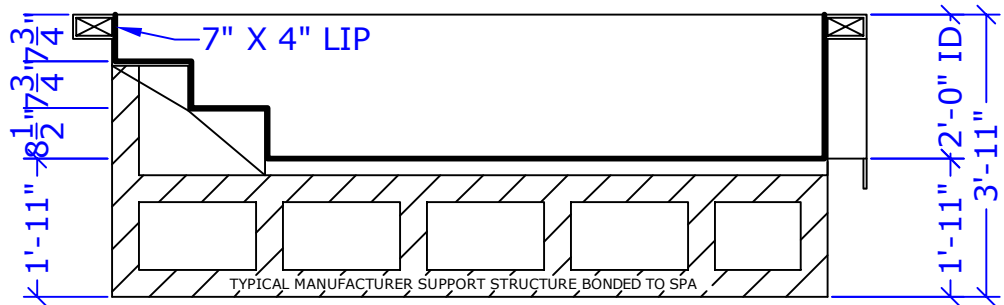
JOB: MORRISON

DR#: MOR-SPA-ED2



**SPECIFICATIONS**  
 DRY WEIGHT: 8000 lbs.  
 IAPMO#: 1138  
 FDA#: 2030305

**NOTE:**  
 ALL SPA PLUMBING IS  
 INSTALLED AND  
 PRESSURE TESTED AT  
 FACTORY PRIOR TO  
 SHIPPING



**NESPA ENTERPRISES INC.**

2800 Richter Ave. Suite E  
Oroville, CA 95965

Office: (888) 479-4677 Fax: (530) 534-9915  
E-Mail: sales@tiledspas.com www.tiledspas.com

**CUSTOM**

**EQ ROOM**

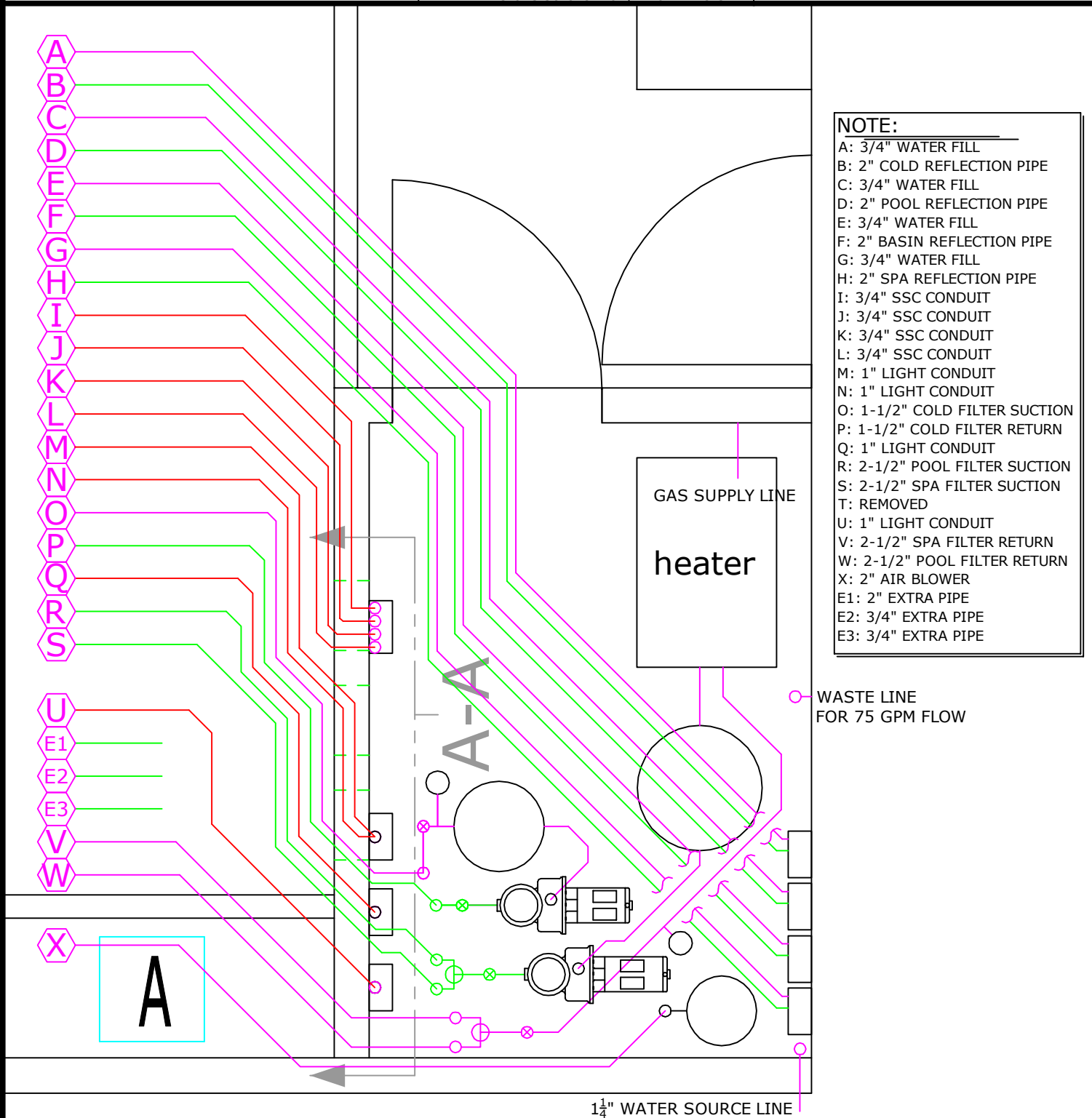
\*ALL DIMENSIONS SUBJECT TO 1/4" TOLERANCES\*

SCALE: 1/2" = 1'-0"

DATE: 9/19/02

JOB: MORRISON

DR#: MOR-SPA-EQR4



- NOTE:**
- A: 3/4" WATER FILL
  - B: 2" COLD REFLECTION PIPE
  - C: 3/4" WATER FILL
  - D: 2" POOL REFLECTION PIPE
  - E: 3/4" WATER FILL
  - F: 2" BASIN REFLECTION PIPE
  - G: 3/4" WATER FILL
  - H: 2" SPA REFLECTION PIPE
  - I: 3/4" SSC CONDUIT
  - J: 3/4" SSC CONDUIT
  - K: 3/4" SSC CONDUIT
  - L: 3/4" SSC CONDUIT
  - M: 1" LIGHT CONDUIT
  - N: 1" LIGHT CONDUIT
  - O: 1-1/2" COLD FILTER SUCTION
  - P: 1-1/2" COLD FILTER RETURN
  - Q: 1" LIGHT CONDUIT
  - R: 2-1/2" POOL FILTER SUCTION
  - S: 2-1/2" SPA FILTER SUCTION
  - T: REMOVED
  - U: 1" LIGHT CONDUIT
  - V: 2-1/2" SPA FILTER RETURN
  - W: 2-1/2" POOL FILTER RETURN
  - X: 2" AIR BLOWER
  - E1: 2" EXTRA PIPE
  - E2: 3/4" EXTRA PIPE
  - E3: 3/4" EXTRA PIPE

○ WASTE LINE FOR 75 GPM FLOW

NESPA ENTERPRISES INC.

2800 Richter Ave. Suite E  
Oroville, CA 95965

Office: (888) 479-4677 Fax: (530) 534-9915  
E-Mail: sales@tiledspas.com www.tiledspas.com

CUSTOM

SUCTION PLUMBING

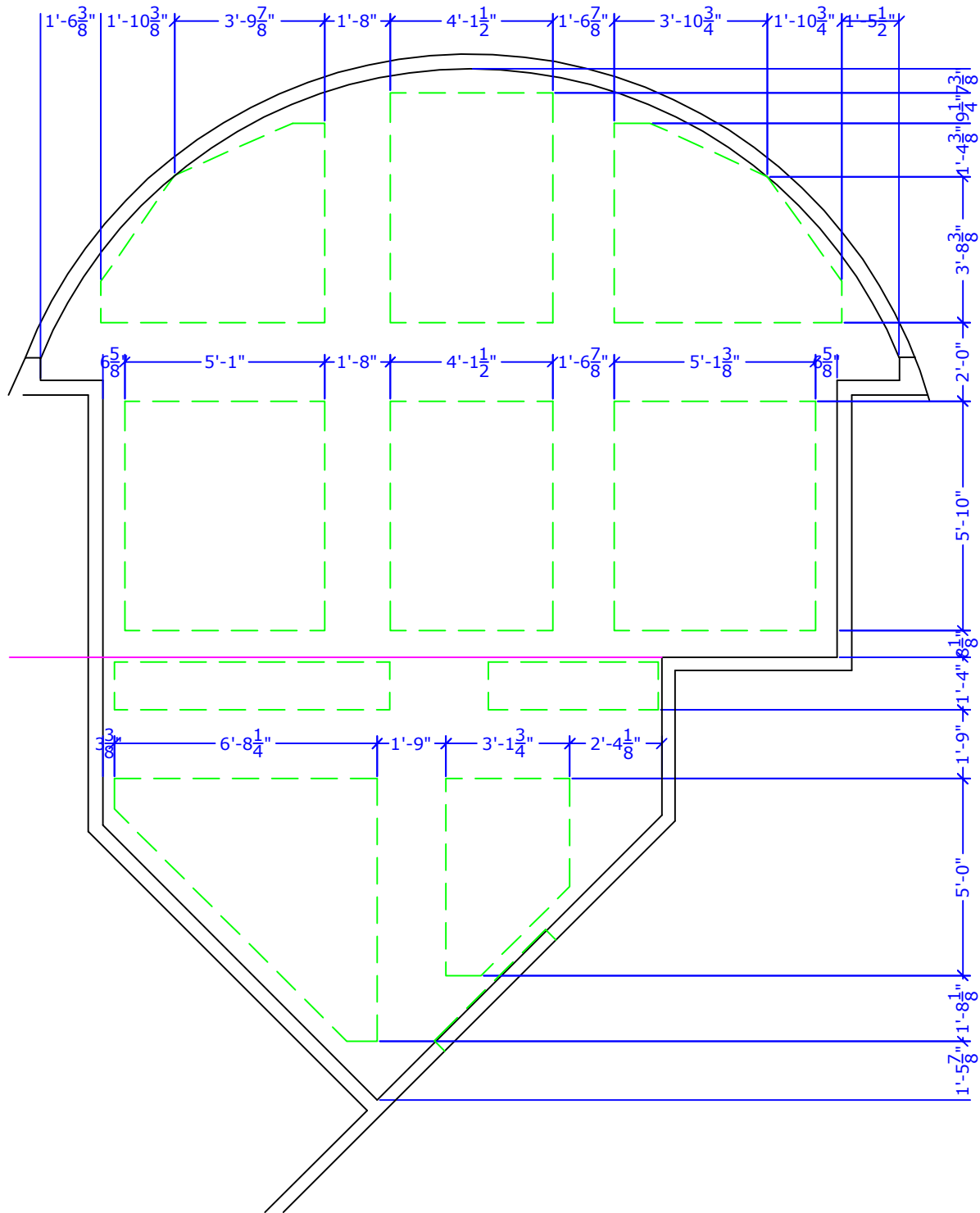
\*ALL DIMENSIONS SUBJECT TO 1/4" TOLERANCES\*

SCALE: 1/4" = 1'-0"

DATE: 9/10/02

JOB: MORRISON

DR#: MOR-SPA-PAD2



**NESPA ENTERPRISES INC.**

2800 Richter Ave. Suite E  
Oroville, CA 95965

Office: (888) 479-4677 Fax: (530) 534-9915  
E-Mail: sales@tiledspas.com www.tiledspas.com

**CUSTOM**

**SPA LAYOUT**

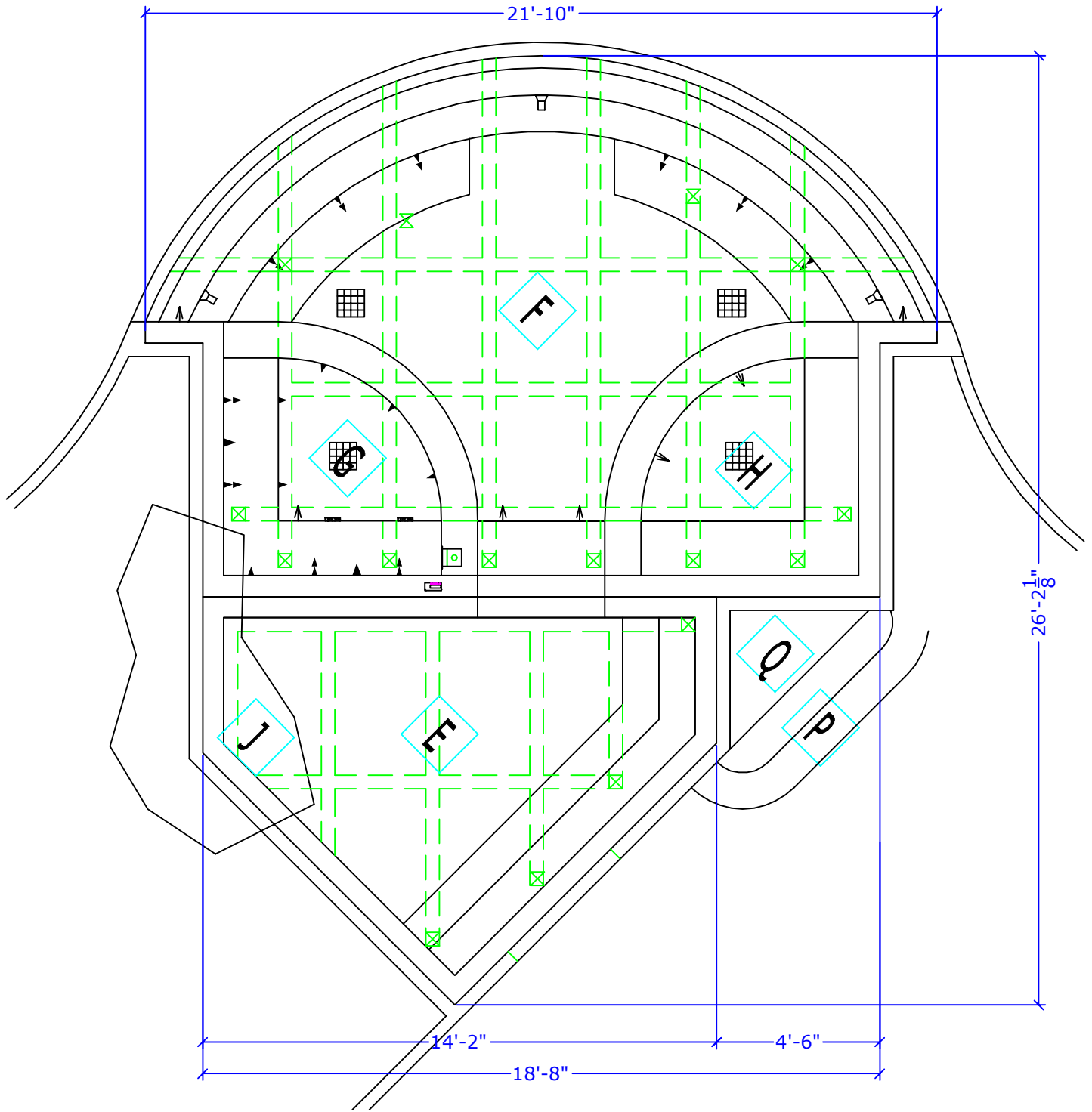
\*ALL DIMENSIONS SUBJECT TO 1/4" TOLERANCES\*

SCALE: 1/4" = 1'-0"

DATE: 9/10/02

JOB: MORRISON

DR#: MOR-SPA-SL1



NESPA ENTERPRISES INC.

2800 Richter Ave. Suite E  
Oroville, CA 95965

Office: (888) 479-4677 Fax: (530) 534-9915  
E-Mail: sales@tiledspas.com www.tiledspas.com

CUSTOM

PLUMBING CHASES

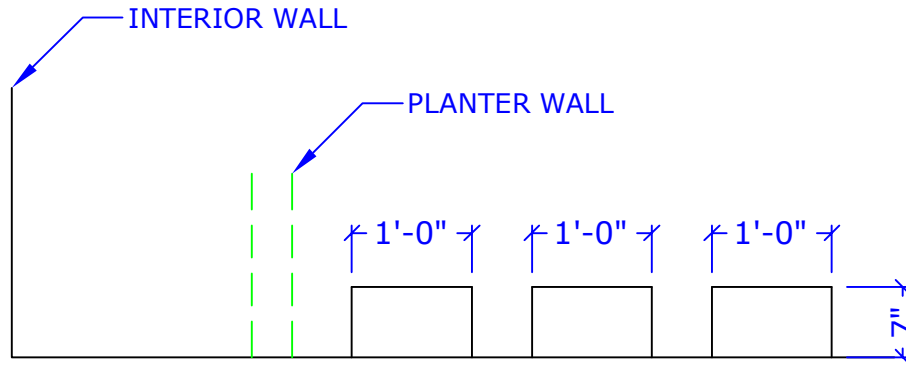
\*ALL DIMENSIONS SUBJECT TO 1/4" TOLERANCES\*

SCALE: 5/8" = 1'-0"

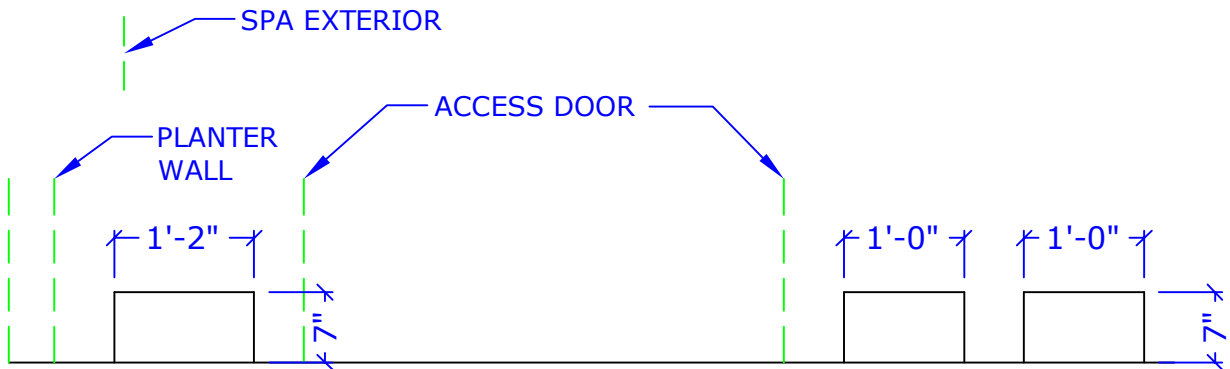
DATE: 9/19/02

JOB: MORRISON

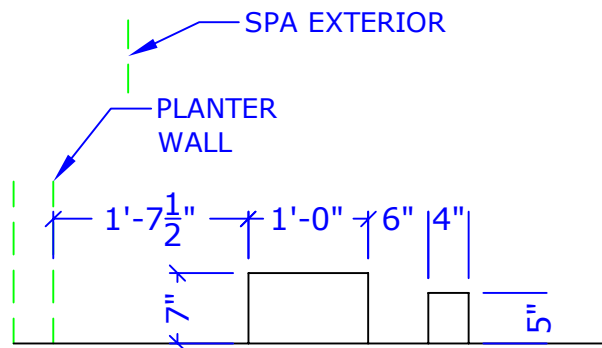
DR#: MOR-SPA-PC1



SECTION A-A



SECTION B-B



SECTION C-C

NESPA ENTERPRISES INC.

2800 Richter Ave. Suite E

Oroville, CA 95966

Office: (888) 479-4677 Fax: (530) 534-9915

E-Mail: nespa@pacbell.net www.tiledspas.com

CUSTOM

SPA AREA LAYOUT

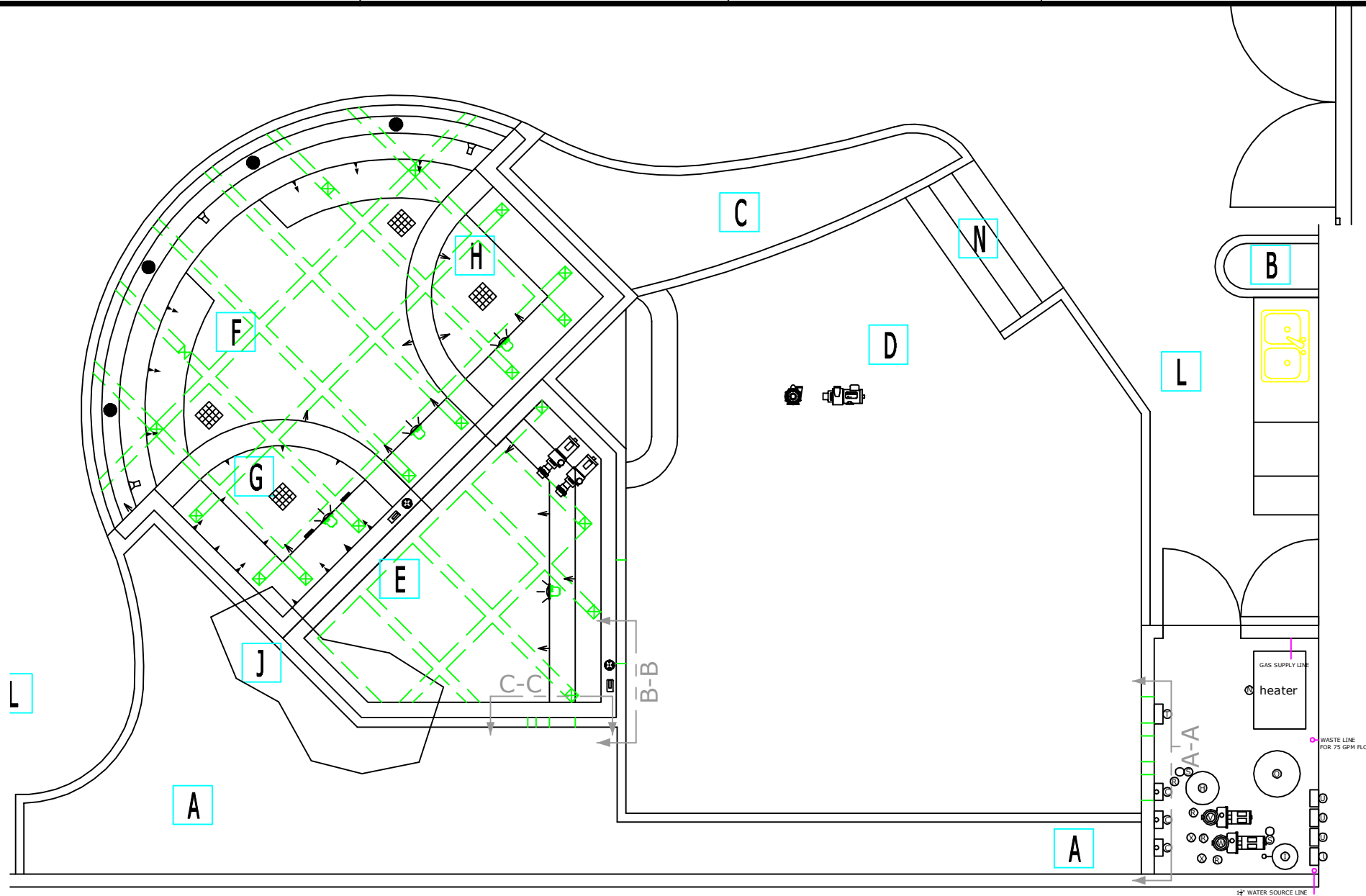
\*ALL DIMENSIONS SUBJECT TO 1/4" TOLERANCES\*

SCALE: 3/16" = 1'-0"

DATE: 9/19/02

JOB: MORRISON

DR#: MOR-SAL1



These drawings, concepts, and details contained herein are the original proprietary designs of NESPA ENTERPRISES, developed over many years of experience in the pool and spa industry and as such are protected by the copyright laws of the United States Government. Reproduction of any of the above without written permission to do so by NESPA ENTERPRISES, is illegal.



**NESPA ENTERPRISES INC.**

2800 Richter Ave. Suite C  
Oroville, CA 95966

Office: (888) 479-4677 Fax: (530) 534-9915  
E-Mail: sales@tiledspas.com www.tiledspas.com

**CUSTOM**

**VANISHING EDGE MECHANICS**

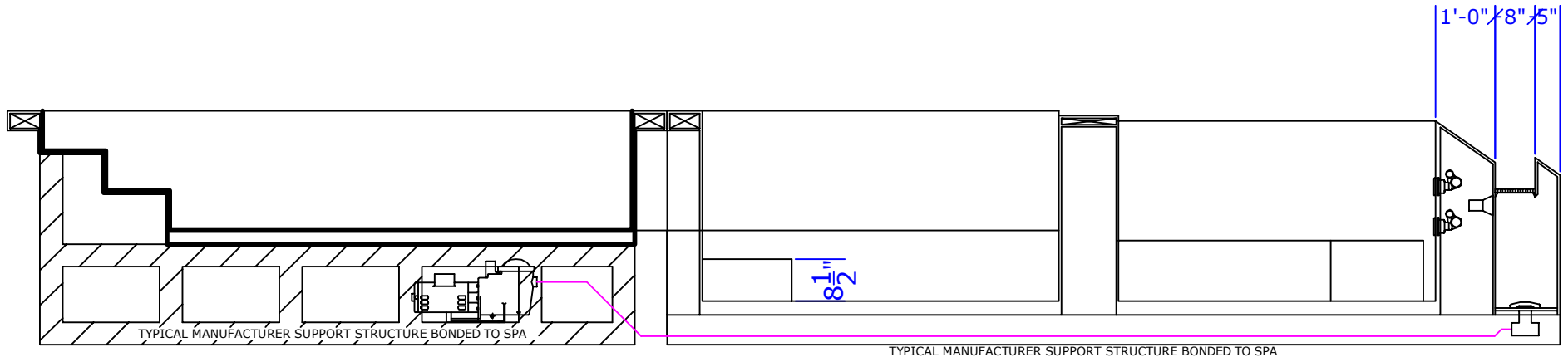
\*ALL DIMENSIONS SUBJECT TO 1/4" TOLERANCES\*

SCALE: 3/8" = 1'-0"

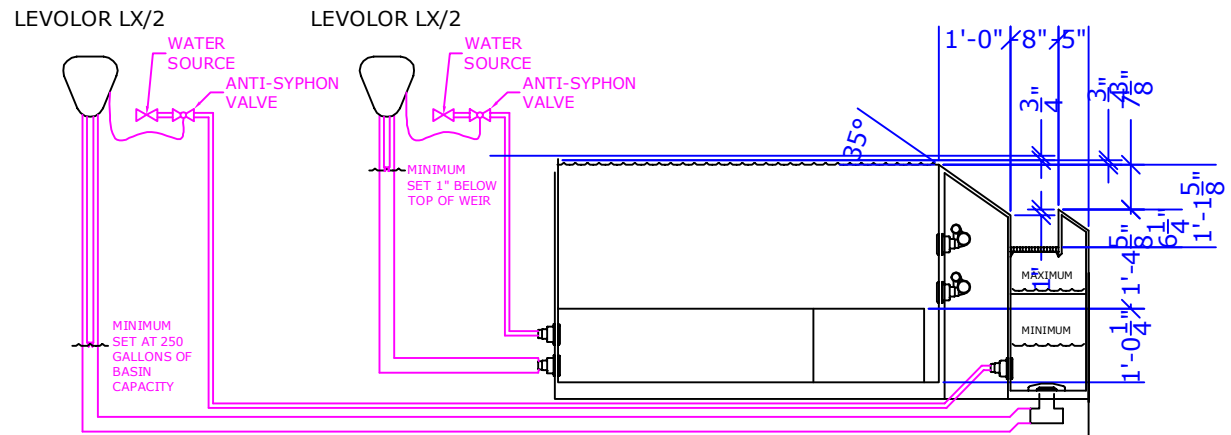
DATE: 10/09/02

JOB: MORRISON

DR#: MOR-VEM2



POOL	
PERIMETER:	81'-0"
SURFACE AREA:	192 SQ. FT.
WATER DEPTHS:	1'-10" - 3'-0"
CAPACITY:	3300 GALLONS
WEIR LENGTH:	24'-6"
CAPACITY CALC:	
1" OF POOL WATER EQUALS 120 GAL	
WATER IN TRANSIT = 1/4" OR 40 GAL	
SURGE CAPACITY = 300 GAL	
OVERFLOW ACTIVE AT 530 GAL	
OVERFLOW PROVIDED BY (3) 2" PIPES	
BASIN	
PERIMETER:	54'-6"
SURFACE AREA:	25.5 SQ. FT.
WATER DEPTHS:	1'-7 3/8"
MAXIMUM CAPACITY:	562 GALLONS
CAPACITY: IN CU. FT.	75 CU. FT.



**WATER FILL LEVELING DEVICES**

**NESPA ENTERPRISES INC.**

2800 Richter Ave. Suite C  
Oroville, CA 95966

Office: (888) 479-4677 Fax: (530) 534-9915  
E-Mail: sales@tiledspas.com www.tiledspas.com

**CUSTOM**

**BASIN STORAGE AREA**

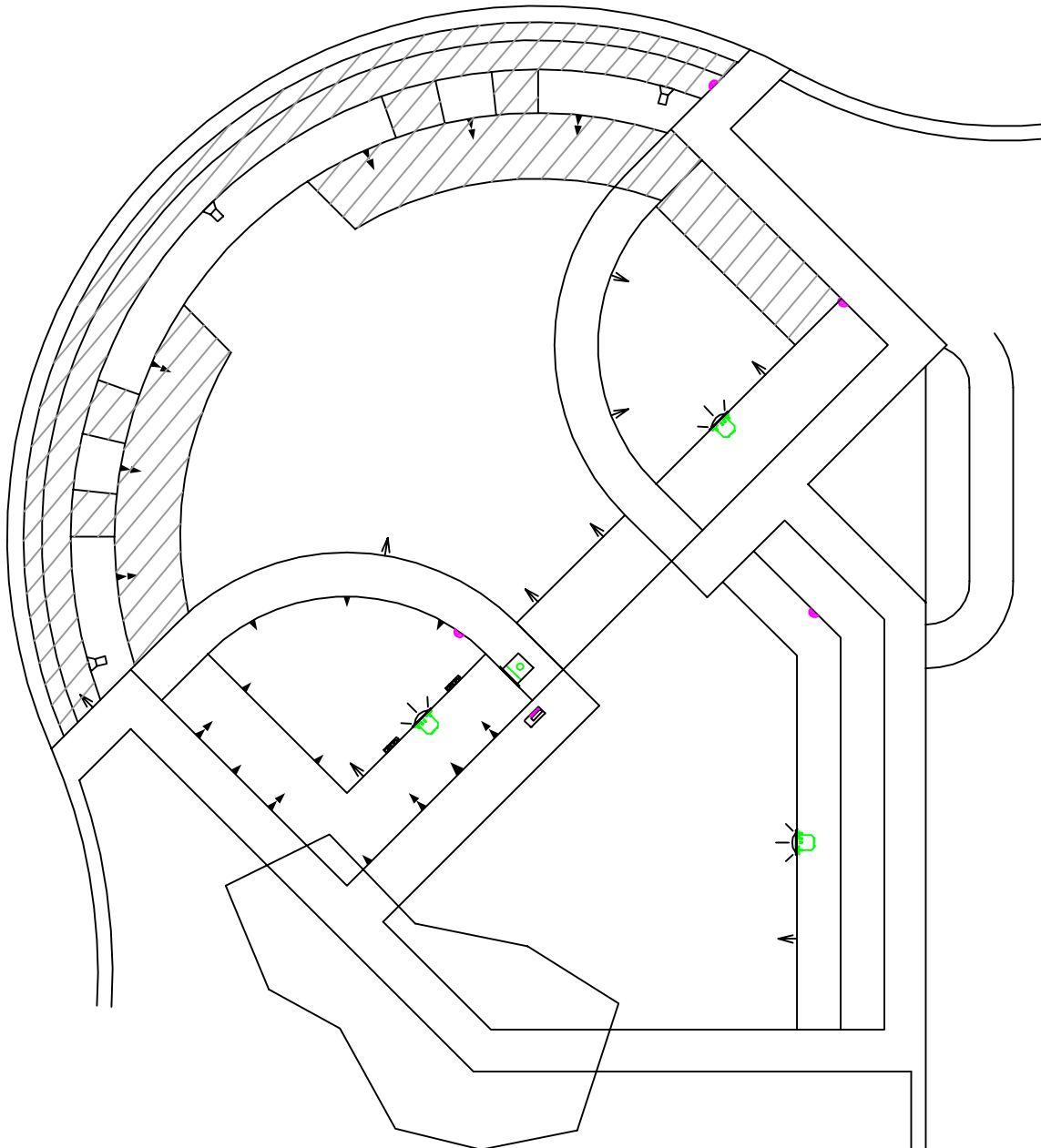
\*ALL DIMENSIONS SUBJECT TO 1/4" TOLERANCES\*

SCALE: 1/4" = 1'-0"

DATE: 9/20/02

JOB: MORRISON

DR#: MOR-BSA1



<b>OVER ALL</b>	
PERIMETER:	67'-0"
WATER SURFACE AREA:	286 SQ. FT.
WATER DEPTHS:	1'-6" - 3'-0"
CAPACITY:	4800 GALLONS
COMBINED WEIGHT:	60,000 LBS
<b>SPA</b>	
PERIMETER:	22'-0"
WATER SURFACE AREA:	32 SQ. FT.
WATER DEPTHS:	2'-8"
CAPACITY:	510 GALLONS
<b>COOL DOWN</b>	
PERIMETER:	22'-0"
WATER SURFACE AREA:	32 SQ. FT.
WATER DEPTHS:	2'-8"
CAPACITY:	510 GALLONS
<b>POOL</b>	
PERIMETER:	81'-0"
SURFACE AREA:	192 SQ. FT.
WATER DEPTHS:	1'-10" - 3'-0"
CAPACITY:	3300 GALLONS
WEIR LENGTH:	24'-6"
<b>BASIN</b>	
PERIMETER:	54'-6"
SURFACE AREA:	25.5 SQ. FT.
WATER DEPTHS:	1'-7 3/8"
CAPACITY:	562 GALLONS
WEIR LENGTH:	24'-5"

These drawings, concepts, and details contained herein are the original proprietary designs of NESPA ENTERPRISES, developed over many years of experience in the pool and spa industry and as such are protected by the copyright laws of the United States Government. Reproduction of any of the above without written permission to do so by NESPA ENTERPRISES, is illegal.

NESPA ENTERPRISES INC.

2800 Richter Ave. Suite C  
Oroville, CA 95966

Office: (888) 479-4677 Fax: (530) 534-9915

E-Mail: sales@tiledspas.com www.tiledspas.com

CUSTOM

PLUMBING DETAIL

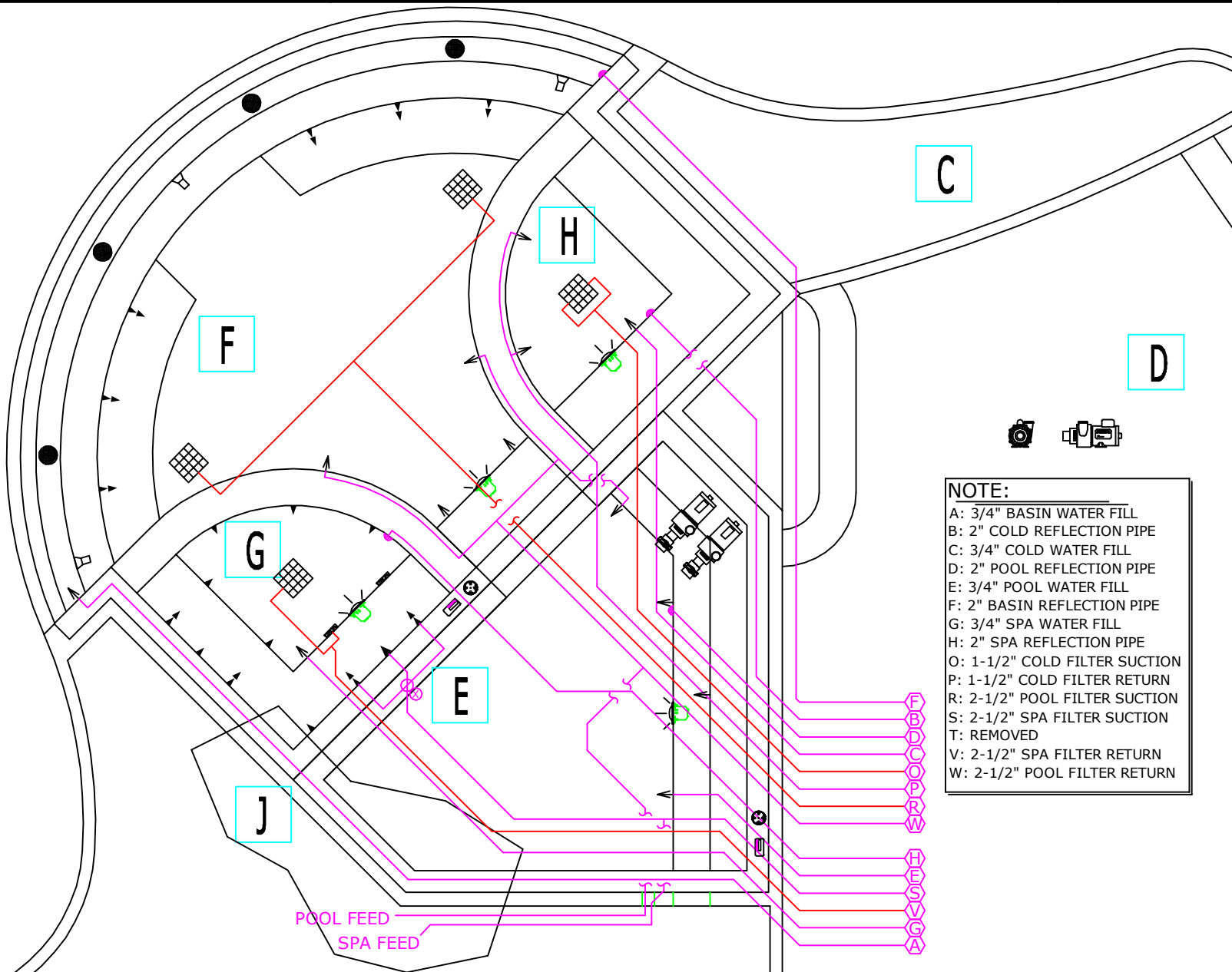
\*ALL DIMENSIONS SUBJECT TO 1/4" TOLERANCES\*

SCALE: 3/8" = 1'-0"

DATE: 9/23/02

JOB: MORRISON

DR#: MOR-PD1



**NOTE:**  
 A: 3/4" BASIN WATER FILL  
 B: 2" COLD REFLECTION PIPE  
 C: 3/4" COLD WATER FILL  
 D: 2" POOL REFLECTION PIPE  
 E: 3/4" POOL WATER FILL  
 F: 2" BASIN REFLECTION PIPE  
 G: 3/4" SPA WATER FILL  
 H: 2" SPA REFLECTION PIPE  
 O: 1-1/2" COLD FILTER SUCTION  
 P: 1-1/2" COLD FILTER RETURN  
 R: 2-1/2" POOL FILTER SUCTION  
 S: 2-1/2" SPA FILTER SUCTION  
 T: REMOVED  
 V: 2-1/2" SPA FILTER RETURN  
 W: 2-1/2" POOL FILTER RETURN

These drawings, concepts, and details contained herein are the original proprietary designs of NESPA ENTERPRISES, developed over many years of experience in the pool and spa industry and as such are protected by the copyright laws of the United States Government. Reproduction of any of the above without written permission to do so by NESPA ENTERPRISES, is illegal.

NESPA ENTERPRISES INC.

2800 Richter Ave. Suite C  
Oroville, CA 95966

Office: (888) 479-4677 Fax: (530) 534-9915  
E-Mail: sales@tiledspas.com www.tiledspas.com

CUSTOM

ELECTRICAL PIPES DETAIL

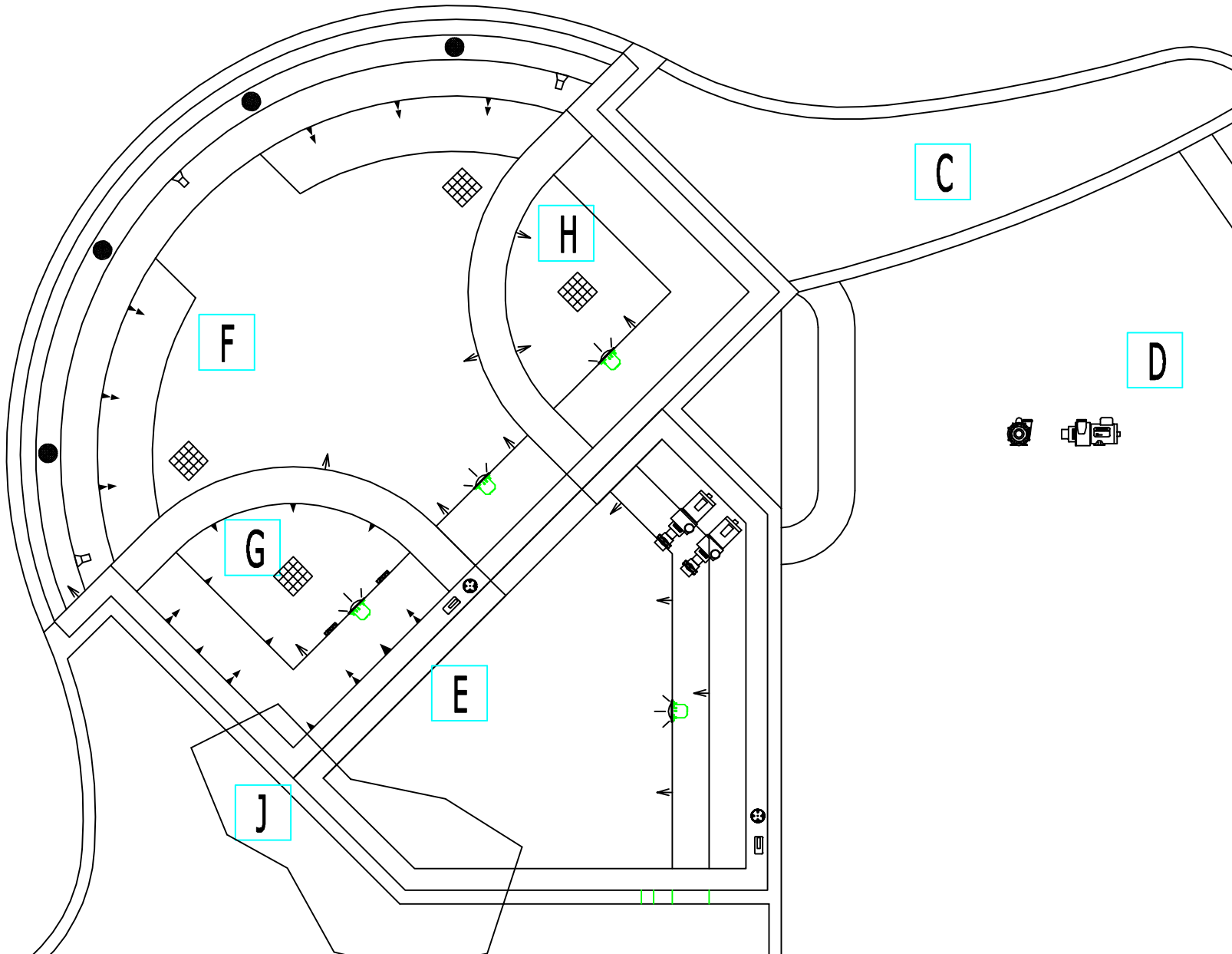
\*ALL DIMENSIONS SUBJECT TO 1/4" TOLERANCES\*

SCALE: 1/4" = 1'-0"

DATE: 9/23/02

JOB: MORRISON

DR#: MOR-EPD1



These drawings, concepts, and details contained herein are the original proprietary designs of NESPA ENTERPRISES, developed over many years of experience in the pool and spa industry and as such are protected by the copyright laws of the United States Government. Reproduction of any of the above without written permission to do so by NESPA ENTERPRISES, is illegal.

NESPA ENTERPRISES INC.

2800 Richter Ave. Suite C  
Oroville, CA 95966

Office: (888) 479-4677 Fax: (530) 534-9915

E-Mail: sales@tiledspas.com www.tiledspas.com

CUSTOM

SCALE: N/A

DATE: 9/30/02

SHT#: 1

ELECTRICAL WIRING DIAGRAM

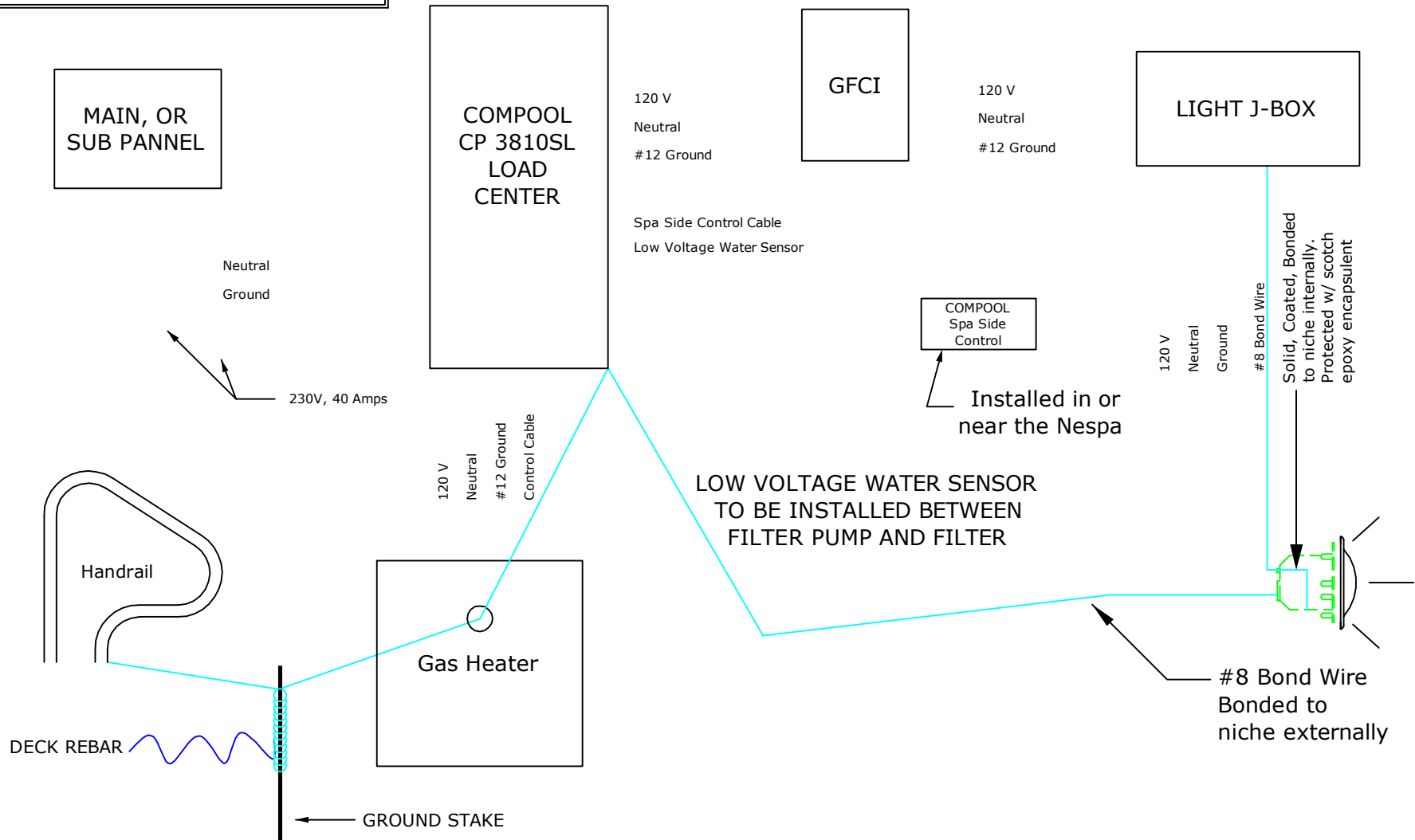
JOB: MORRISON

DR#: MOR-EWD1A

\*ALL DIMENSIONS SUBJECT TO 1/4" TOLERANCES\*

NOTE:

THIS SCHEMATIC IS FOR CONCEPTUAL PURPOSES ONLY.  
ALL WORK SHALL BE PERFORMED BY A LICENSED  
ELECTRICIAN AND COMPLY WITH THE NATIONAL  
ELECTRICAL CODE, AND APPLICABLE LOCAL CODES.



**NESPA ENTERPRISES INC.**

2800 Richter Ave. Suite C  
Oroville, CA 95966

Office: (888) 479-4677 Fax: (530) 534-9915

E-Mail: sales@tiledspas.com www.tiledspas.com

**CUSTOM**

SCALE: N/A

DATE: 9/30/02

SHT#: 2

**ELECTRICAL WIRING DIAGRAM**

JOB: MORRISON

DR#: MOR-EWD2B

\*ALL DIMENSIONS SUBJECT TO 1/4" TOLERANCES\*

**NOTE:**

THIS SCHEMATIC IS FOR CONCEPTUAL PURPOSES ONLY.  
ALL WORK SHALL BE PERFORMED BY A LICENSED  
ELECTRICIAN AND COMPLY WITH THE NATIONAL  
ELECTRICAL CODE, AND APPLICABLE LOCAL CODES.

MAIN, OR  
SUB PANNEL

COMPOOL  
CP 3810SL  
LOAD  
CENTER

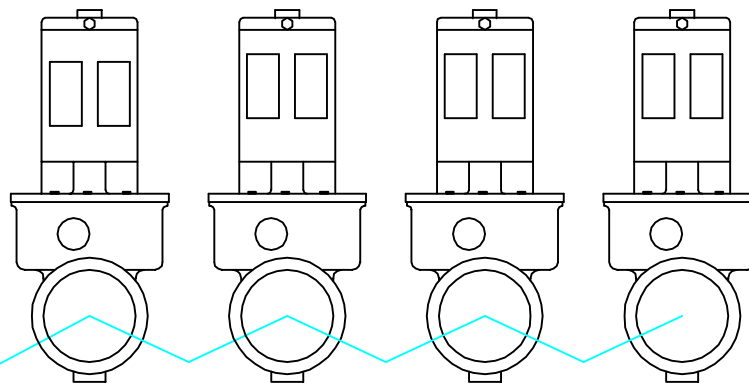
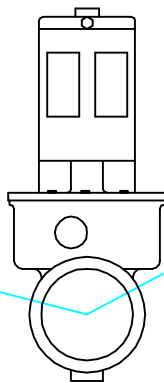
- 230V, 20 Amps
- 230V, 20 Amps
- #12 Ground
- 230V, 20 Amps
- 230V, 20 Amps
- #12 Ground
- 230V, 20 Amps
- 230V, 20 Amps
- #12 Ground
- 230V, 20 Amps
- 230V, 20 Amps
- #12 Ground

- Neutral
- Ground
- 230V, 40 Amps
- 230V, 40 Amps

#8 Bond Wire  
Bonded to  
niche externally

AIR BLOWER

- 230V, 20 Amps
- 230V, 20 Amps
- #12 Ground
- 230V, 20 Amps
- 230V, 20 Amps
- #12 Ground



NESPA ENTERPRISES INC.

2800 Richter Ave. Suite E  
Oroville, CA 95966

Office: (888) 479-4677 Fax: (530) 534-9915  
E-Mail: nespa@pacbell.net www.tiledspas.com

CUSTOM

POOL TO EQUIPMENT ROOM

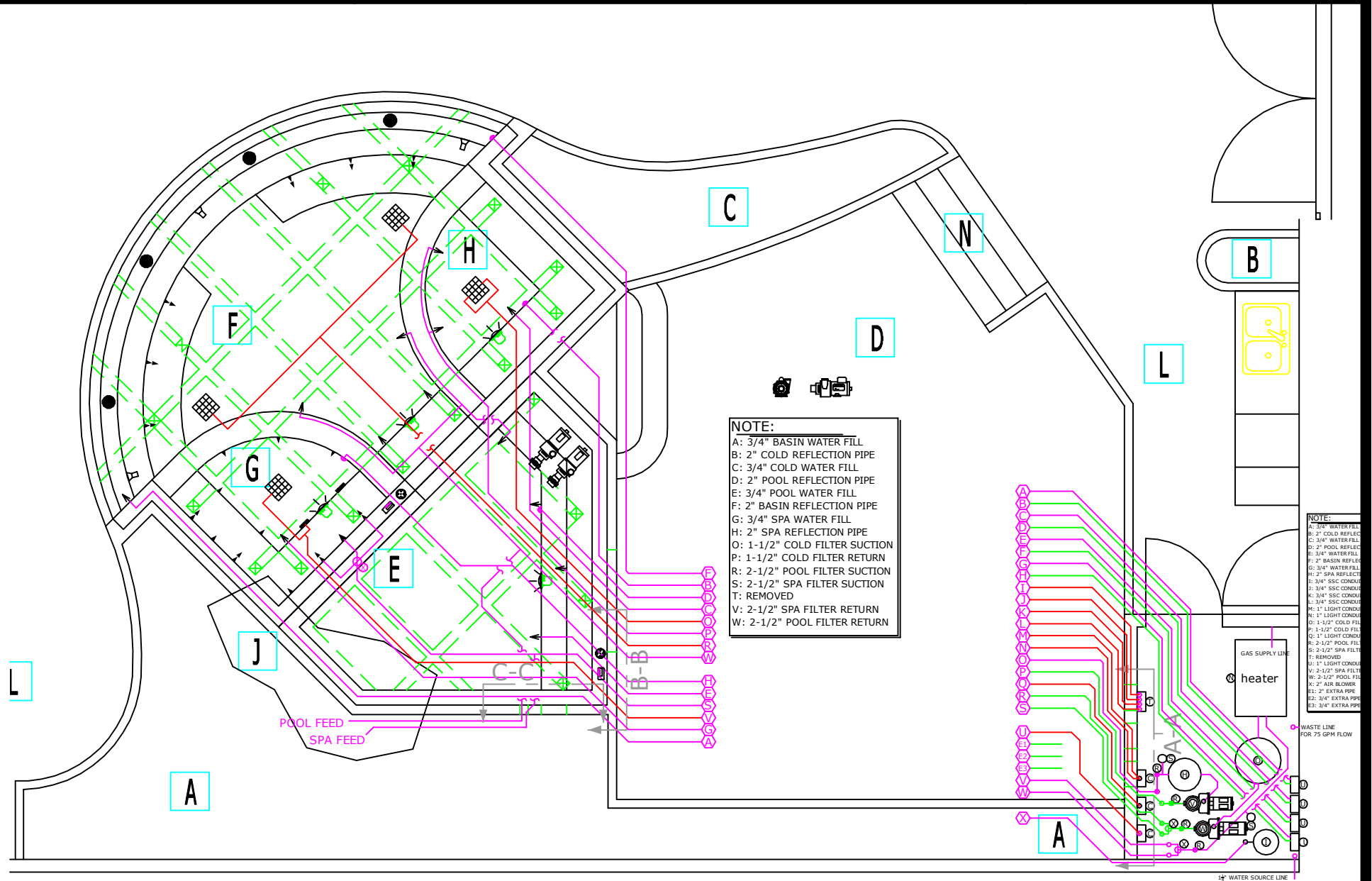
\*ALL DIMENSIONS SUBJECT TO 1/4" TOLERANCES\*

SCALE: 3/16" = 1'-0"

DATE: 10/03/02

JOB: MORRISON

DR#: MOR-PTEQ1



**NOTE:**  
 A: 3/4" BASIN WATER FILL  
 B: 2" COLD REFLECTION PIPE  
 C: 3/4" COLD WATER FILL  
 D: 2" POOL REFLECTION PIPE  
 E: 3/4" POOL WATER FILL  
 F: 2" BASIN REFLECTION PIPE  
 G: 3/4" SPA WATER FILL  
 H: 2" SPA REFLECTION PIPE  
 O: 1-1/2" COLD FILTER SUCTION  
 P: 1-1/2" COLD FILTER RETURN  
 R: 2-1/2" POOL FILTER SUCTION  
 S: 2-1/2" SPA FILTER SUCTION  
 T: REMOVED  
 V: 2-1/2" SPA FILTER RETURN  
 W: 2-1/2" POOL FILTER RETURN

**NOTE:**  
 A: 3/4" WATER FILL  
 B: 2" COLD REFLECT  
 C: 3/4" WATER FILL  
 D: 2" WATER FILL  
 E: 3/4" WATER FILL  
 F: 2" BASIN REFLECT  
 G: 3/4" WATER FILL  
 H: 2" SPA REFLECT  
 I: 3/4" SSC CONDUIT  
 J: 3/4" SSC CONDUIT  
 K: 3/4" SSC CONDUIT  
 L: 3/4" SSC CONDUIT  
 M: 1" LIGHT CONDUIT  
 N: 1" LIGHT CONDUIT  
 O: 1-1/2" COLD FILL  
 P: 1-1/2" COLD FILL  
 Q: 1" LIGHT CONDUIT  
 R: 2-1/2" POOL FILL  
 S: 2-1/2" SPA FILL  
 T: REMOVED  
 U: 1" LIGHT CONDUIT  
 V: 2-1/2" SPA FILL  
 W: 2-1/2" POOL FILL  
 X: 2" AIR BLOWER  
 Y: 2" EXTRA PIPE  
 Z: 3/4" EXTRA PIPE  
 AA: 3/4" EXTRA PIPE

These drawings, concepts, and details contained herein are the original proprietary designs of NESPA ENTERPRISES, developed over many years of experience in the pool and spa industry and as such are protected by the copyright laws of the United States Government. Reproduction of any of the above without written permission to do so by NESPA ENTERPRISES, is illegal.

**NESPA ENTERPRISES INC.**

2800 Richter Ave. Suite E  
Oroville, CA 95965

Office: (888) 479-4677 Fax: (530) 534-9915  
E-Mail: sales@tiledspas.com www.tiledspas.com

**CUSTOM**

**POOL TO POOL PLUMBING**

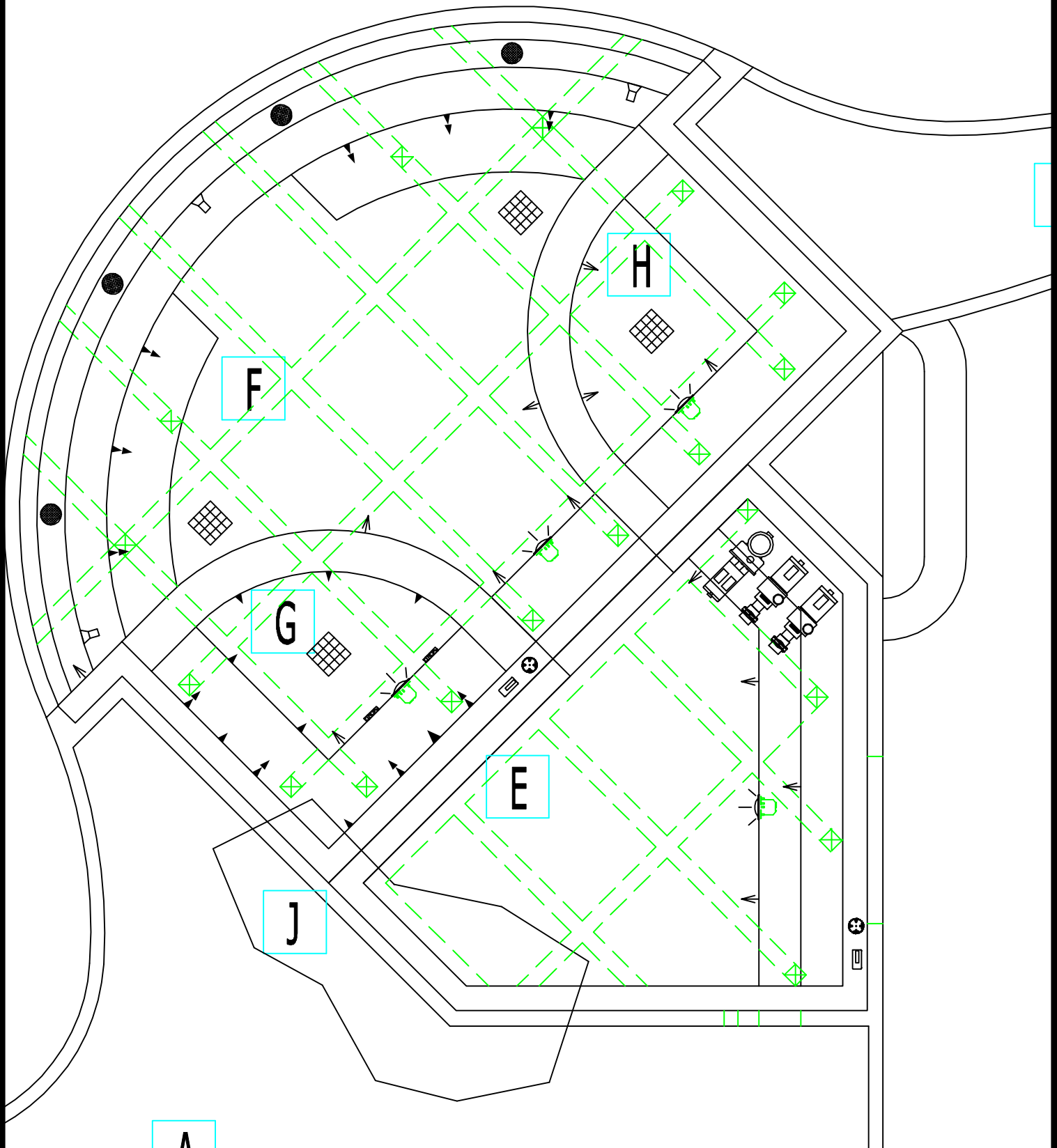
\*ALL DIMENSIONS SUBJECT TO 1/4" TOLERANCES\*

SCALE: 5/16" = 1'-0"

DATE: 10/08/02

JOB: MORRISON

DR#: MOR-SPA-PTPP2



These drawings, concepts, and details contained herein are the original proprietary designs of NESPA ENTERPRISES, developed over many years of experience in the pool and spa industry and as such are protected by the copyright laws of the United States Government. Reproduction of any of the above without written permission to do so by NESPA ENTERPRISES, is illegal.



NESPA ENTERPRISES INC.

2800 Richter Ave. Suite E  
Oroville, CA 95965

Office: (888) 479-4677 Fax: (530) 534-9915  
E-Mail: sales@tiledspas.com www.tiledspas.com

CUSTOM

GASKET DETAIL

\*ALL DIMENSIONS SUBJECT TO 1/4" TOLERANCES\*

SCALE: 3/2" = 1'-0"

DATE: 10/18/02

JOB: MORRISON

DR#: MOR-SPA-GAS1

