

1

2

3

4



ZONE	REV	PG.	REVISION DESCRIPTION	DATE
ALL	0	ALL	INITIAL DESIGN	11-19-06
ALL	1	ALL	Changed skimmer location	11-22-06
ALL	1	ALL	Added Equipment Layout	11-22-06
ALL	0	ALL	Added Plumbing	11-23-06
ALL	1	ALL	Revised Equipment layout	11-26-06
ALL	1	ALL	Added Equipment List, Equipment Docs, Tile Sheet and Details	02-19-2007

A

A

B

B

C

C

D

D

E

E



NESPA ENTERPRISES INC.
 2800 Richter Ave. Suite C
 Oroville, CA 95966
 Office: (530) 534-9910
 Fax: (530) 534-9915
 E-Mail: sales@tiledspas.com
 Web Site: www.tiledspas.com

These drawings, concepts, and details contained herein are the original proprietary designs of NESPA ENTERPRISES, developed over many years of experience in the pool and spa industry and as such are protected by the copyright laws of the United States Government. Reproduction of any of the above without written permission to do so by NESPA ENTERPRISES, is illegal.

ALL DIMENSIONS SUBJECT TO 1/4" TOLERANCES*

Corsica

MONTROSE

SIZE	2/20/2007	DWG NO.	MONTROSE	REV	1
MISC.			SHEET	TITLE PAGE	

1

2

3

4



F

F

1

2

3

4

A

A

B

B

C

C

D

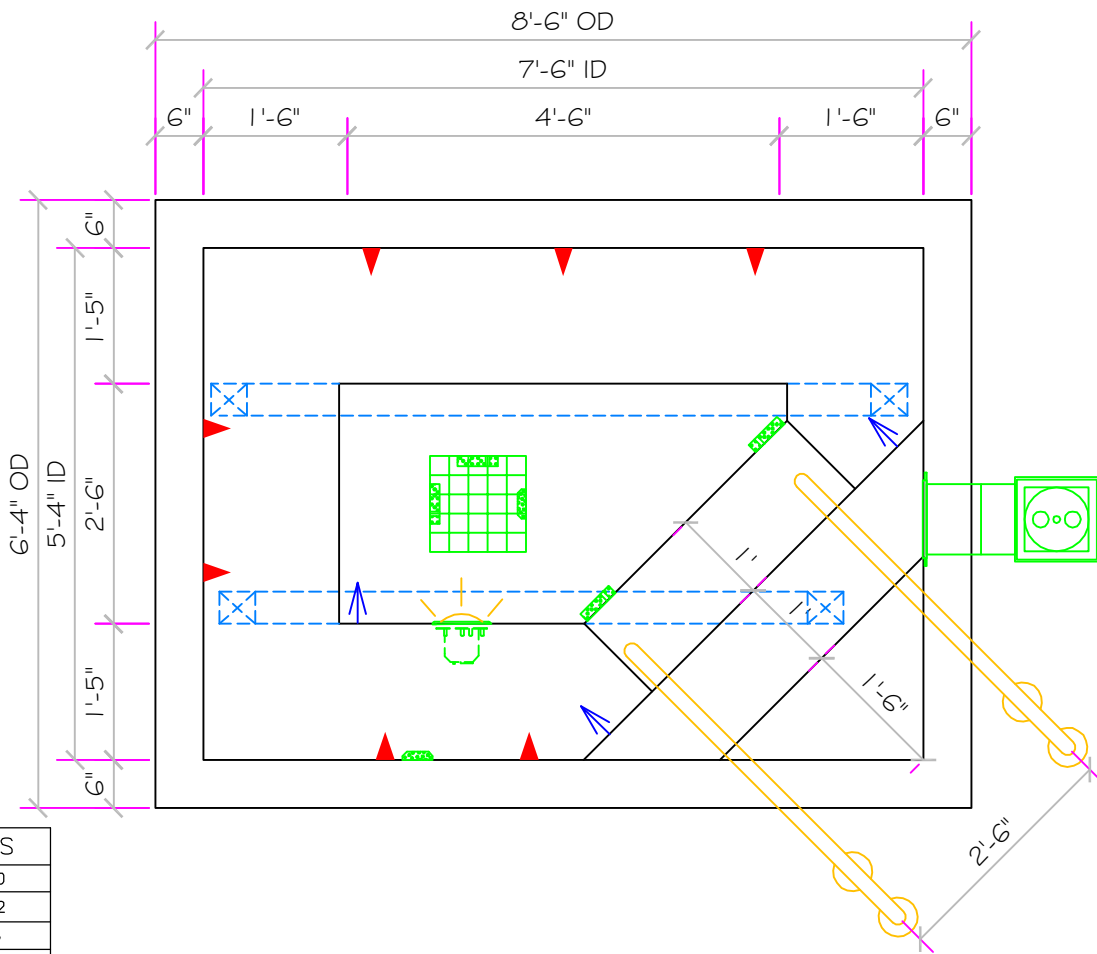
D

E

E

F

F



SPECIFICATIONS	
DRY WEIGHT:	1300
TOTAL WEIGHT:	6102
WATER:	576
VOLUME:	77
WEIGHT:	4802
SURFACE AREA:	40 SQ. FT.
IAPMO#:	1138
FDA#:	2030305

SKID SUPPORT STRUCTURE* BONDED TO SPA

☒ ▨

*SKIDS SUPPLIED BY NESPA

JET **FILL**

▶ ◀

SUCTION ☒☒☒☒

5" HIGH FLOW SUCTIONS
8.39 SQ. IN. OPEN AREA
208 GPM AT 1.5 FT/SEC
COMPLIES W/ ANSI CODE A112.19
UL APPROVED

EQUALIZER ☒☒☒

4" 3.61 SQ.IN. OPEN AREA,
COMPLIES W/ ANSI CODE A112.19

MAIN DRAIN

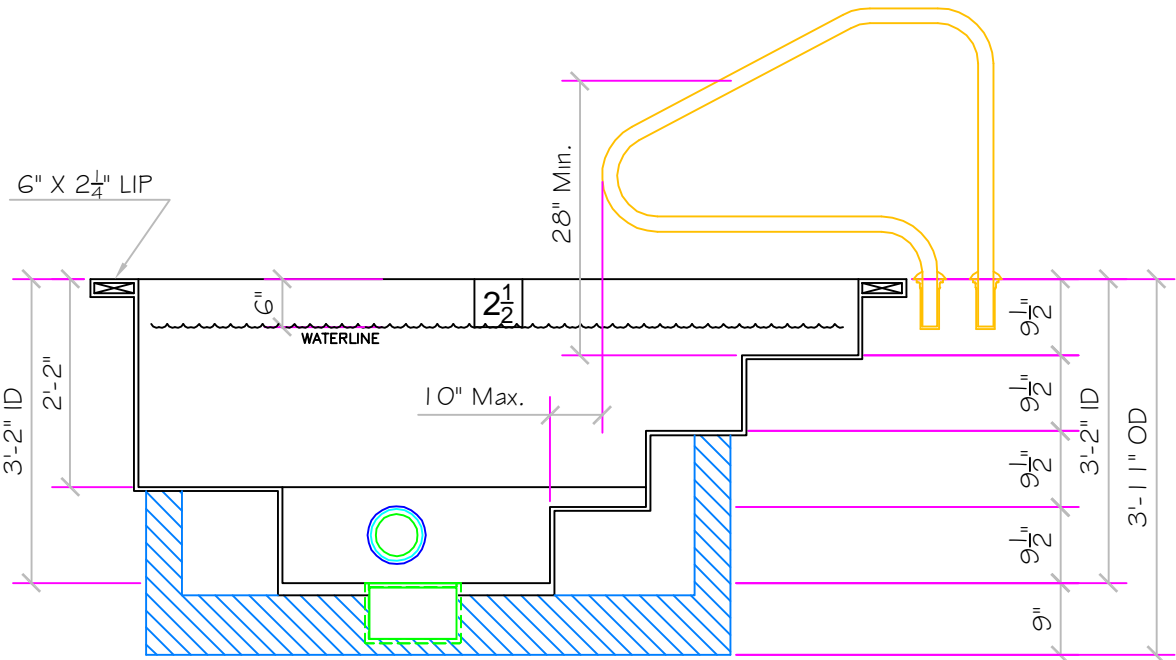
12" X 12" FRAME,
85 SQ. IN. OPEN AREA,
401 GPM @ 1 1/2 FT/SEC

LIGHT NICHE

☒ SPA BRIGHT, 120 V,
100 WATT, 50 CORD,
U.L. APPROVED

SKIMMER

☒ HAYWARD SP-1084FVE
SURFACE SKIMMER
W/ EQUALIZER,
NSF APPROVED



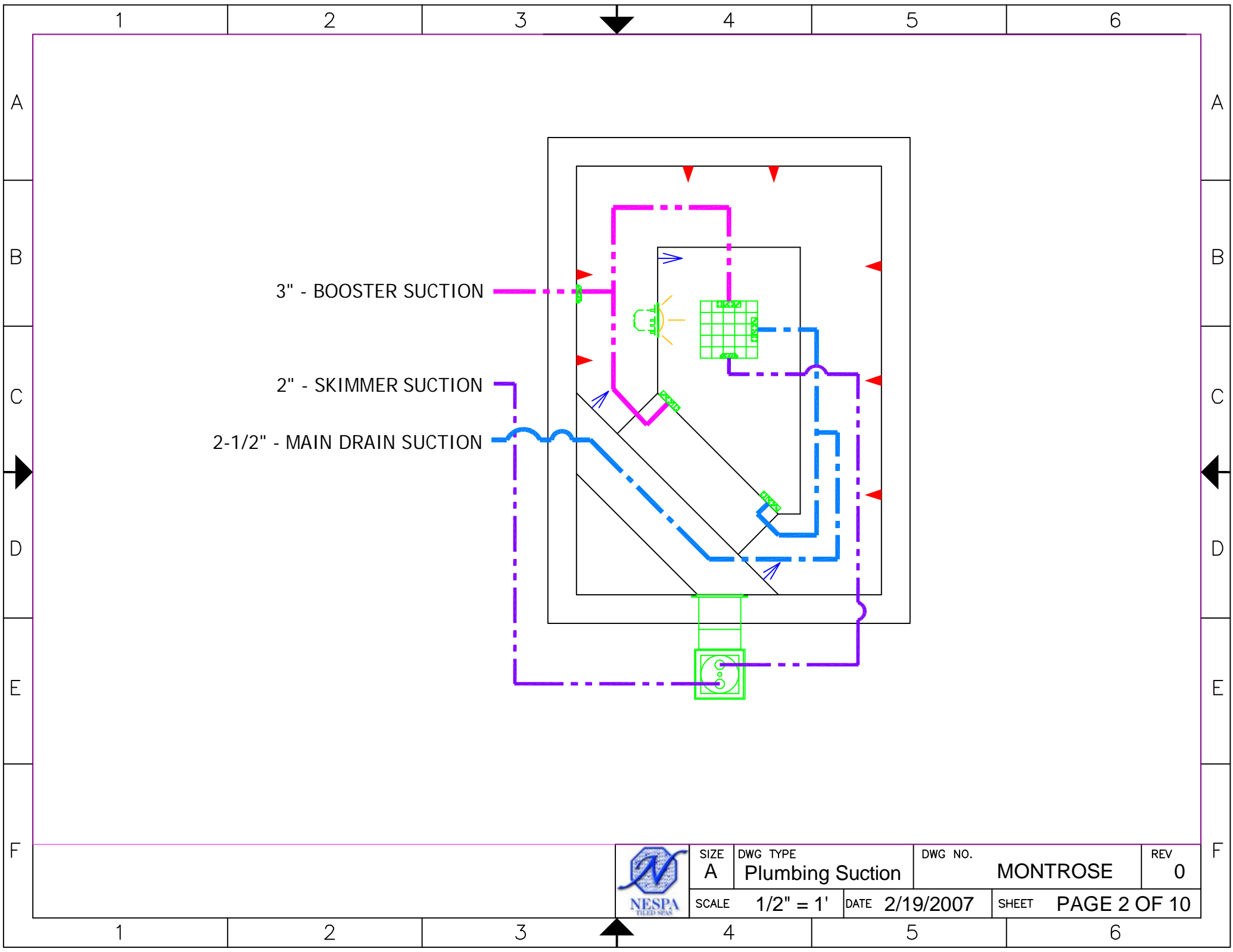
SIZE A	DWG TYPE SD	DWG NO. MONTROSE	REV 1
SCALE 1/2" = 1'-0"		DATE 2/19/2007	SHEET PAGE 1 OF 10

1

2

3

4



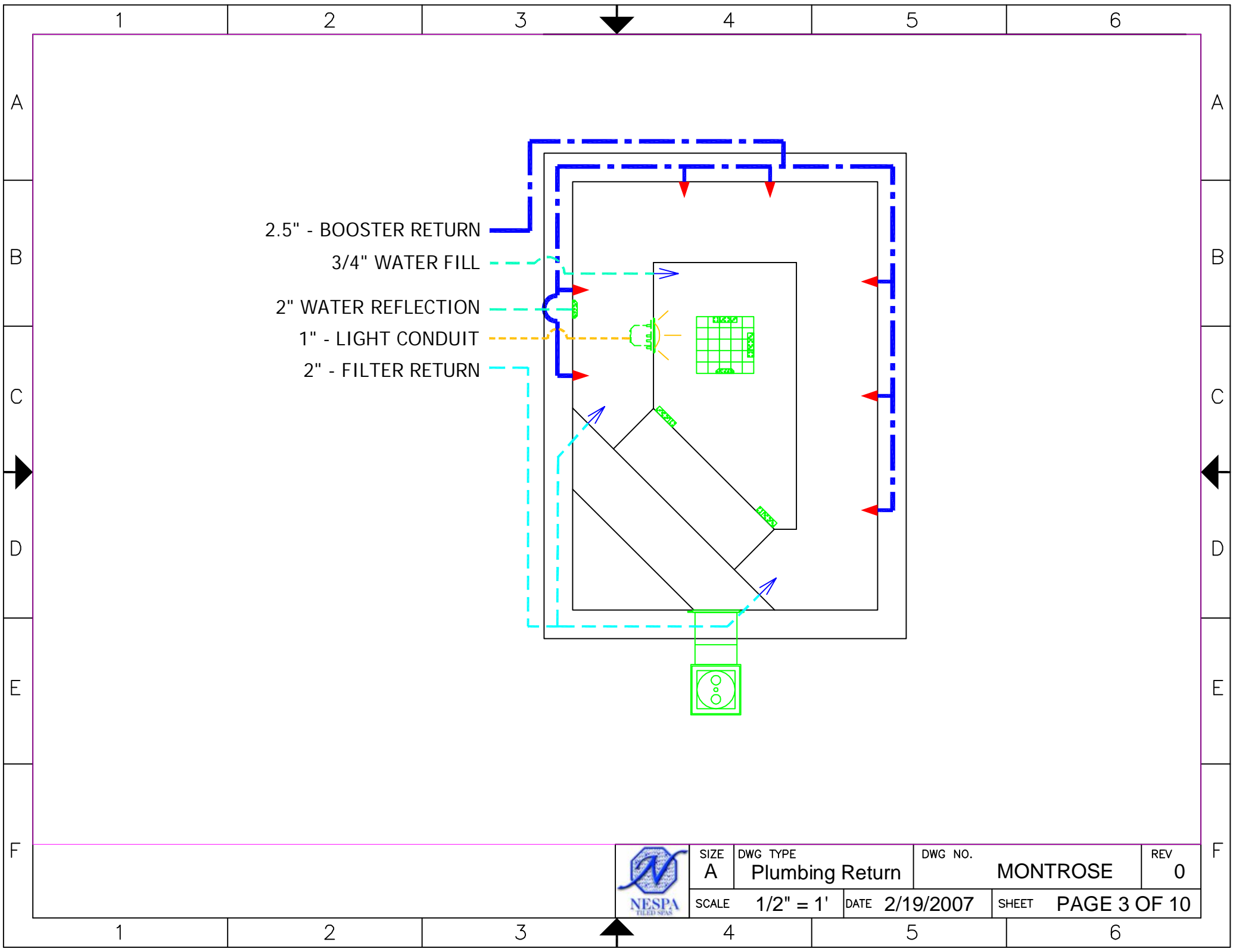
3" - BOOSTER SUCTION

2" - SKIMMER SUCTION

2-1/2" - MAIN DRAIN SUCTION



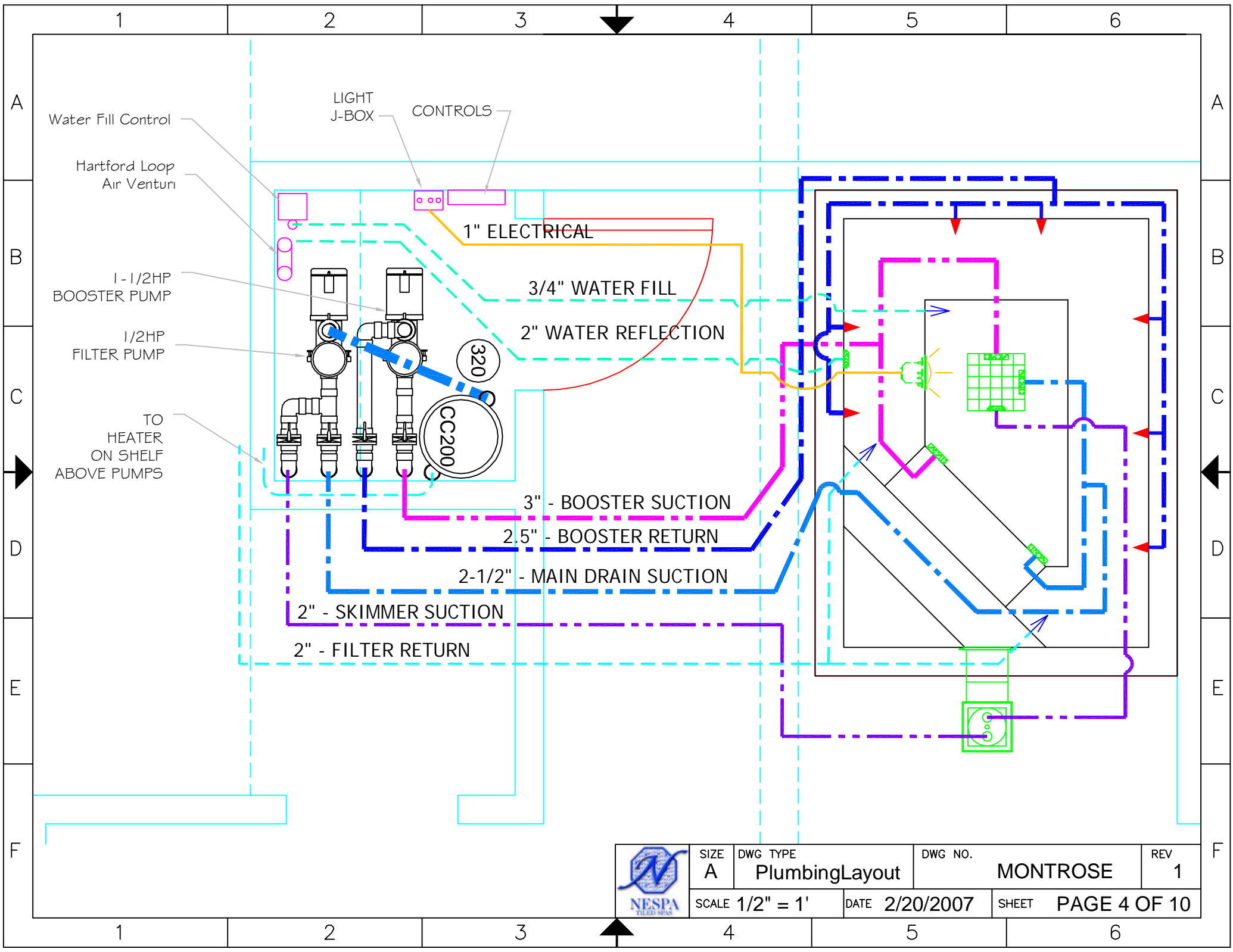
SIZE A	DWG TYPE Plumbing Suction	DWG NO. MONTROSE	REV 0
SCALE 1/2" = 1'	DATE 2/19/2007	SHEET PAGE 2 OF 10	




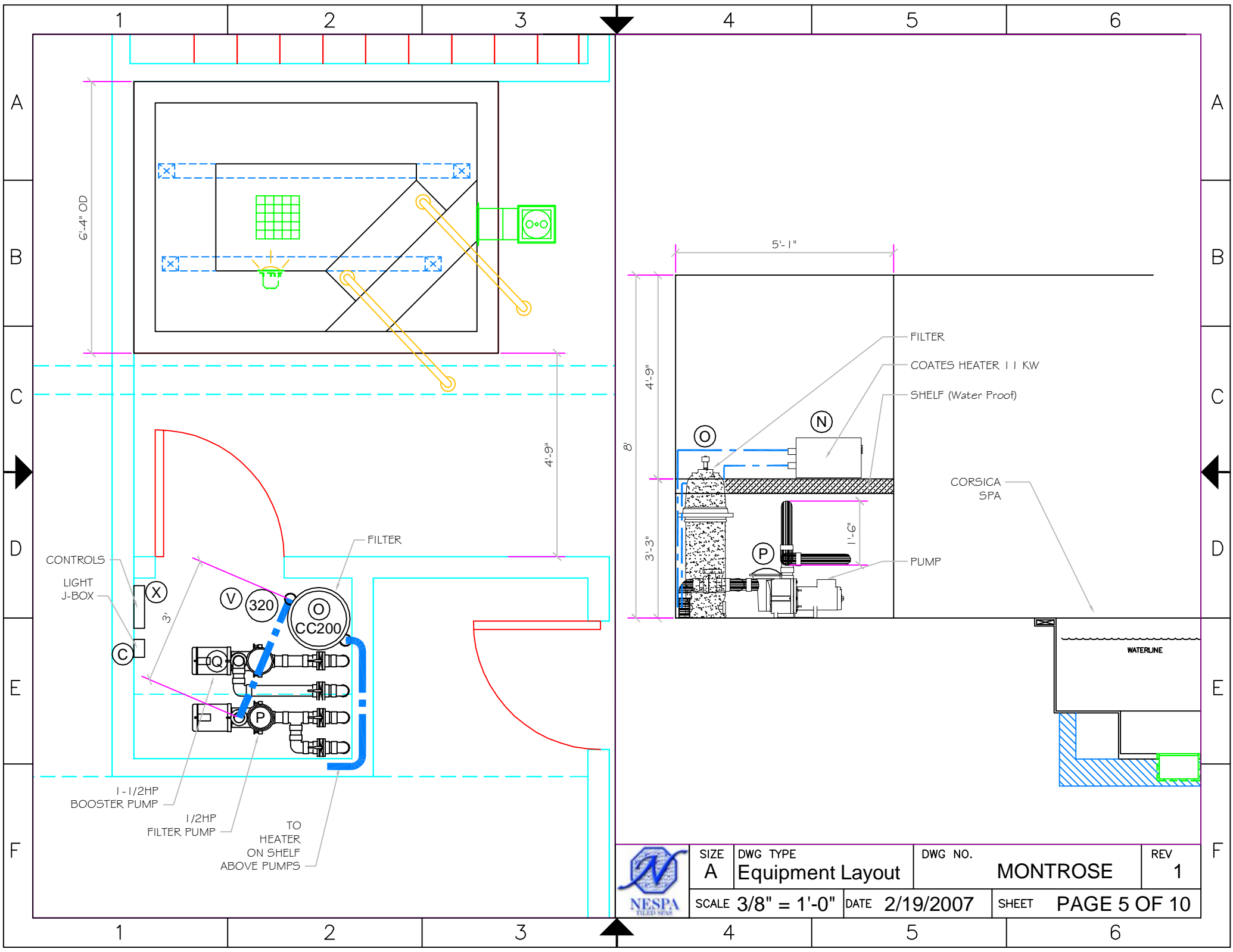
- 2.5" - BOOSTER RETURN
- 3/4" WATER FILL
- 2" WATER REFLECTION
- 1" - LIGHT CONDUIT
- 2" - FILTER RETURN



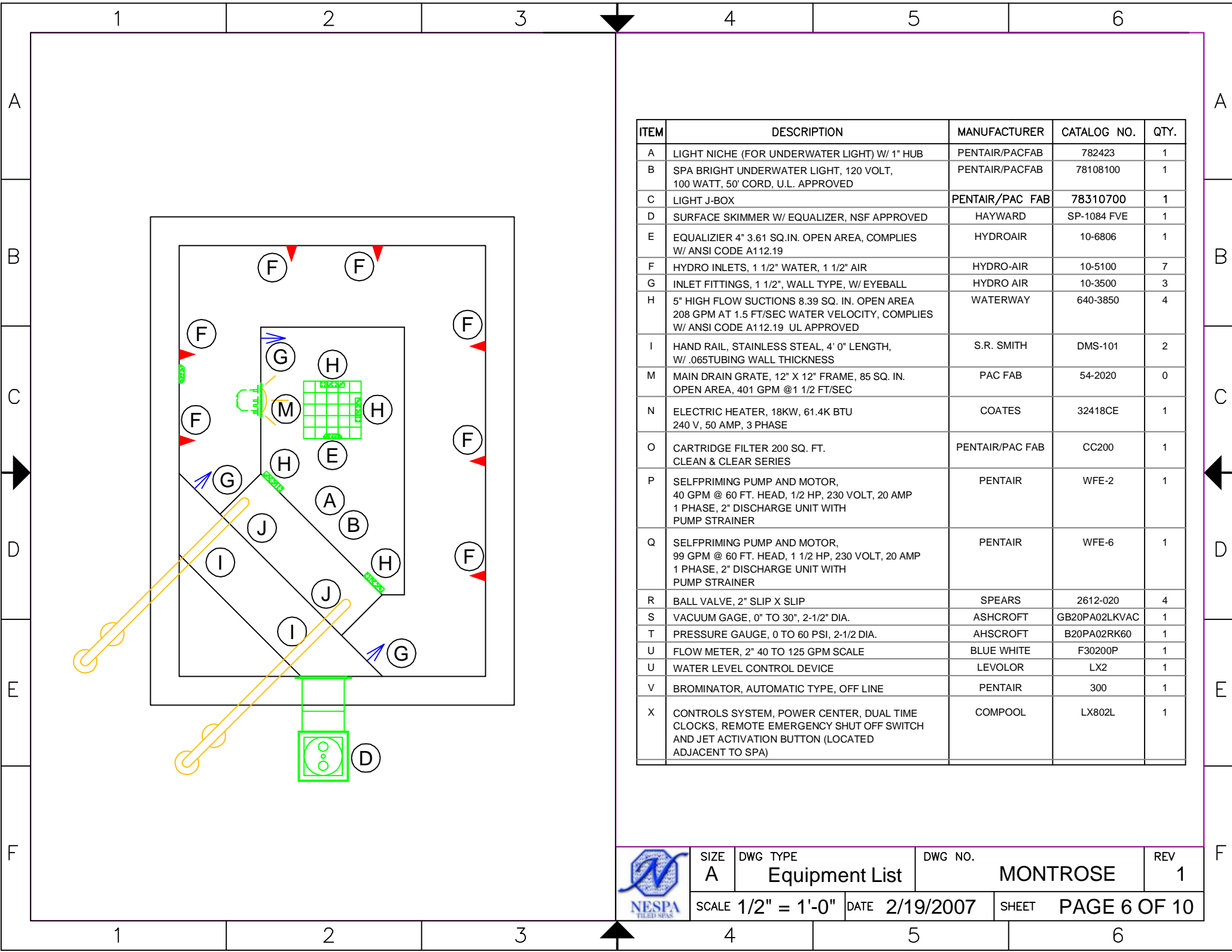
SIZE A	DWG TYPE Plumbing Return	DWG NO.	MONTROSE	REV 0
SCALE 1/2" = 1'	DATE 2/19/2007	SHEET PAGE 3 OF 10		



	SIZE A	DWG TYPE PlumbingLayout	DWG NO. MONTROSE	REV 1
	SCALE 1/2" = 1'	DATE 2/20/2007	SHEET PAGE 4 OF 10	



SIZE A	DWG TYPE Equipment Layout	DWG NO.	MONTROSE	REV 1
SCALE 3/8" = 1'-0"		DATE 2/19/2007	SHEET PAGE 5 OF 10	



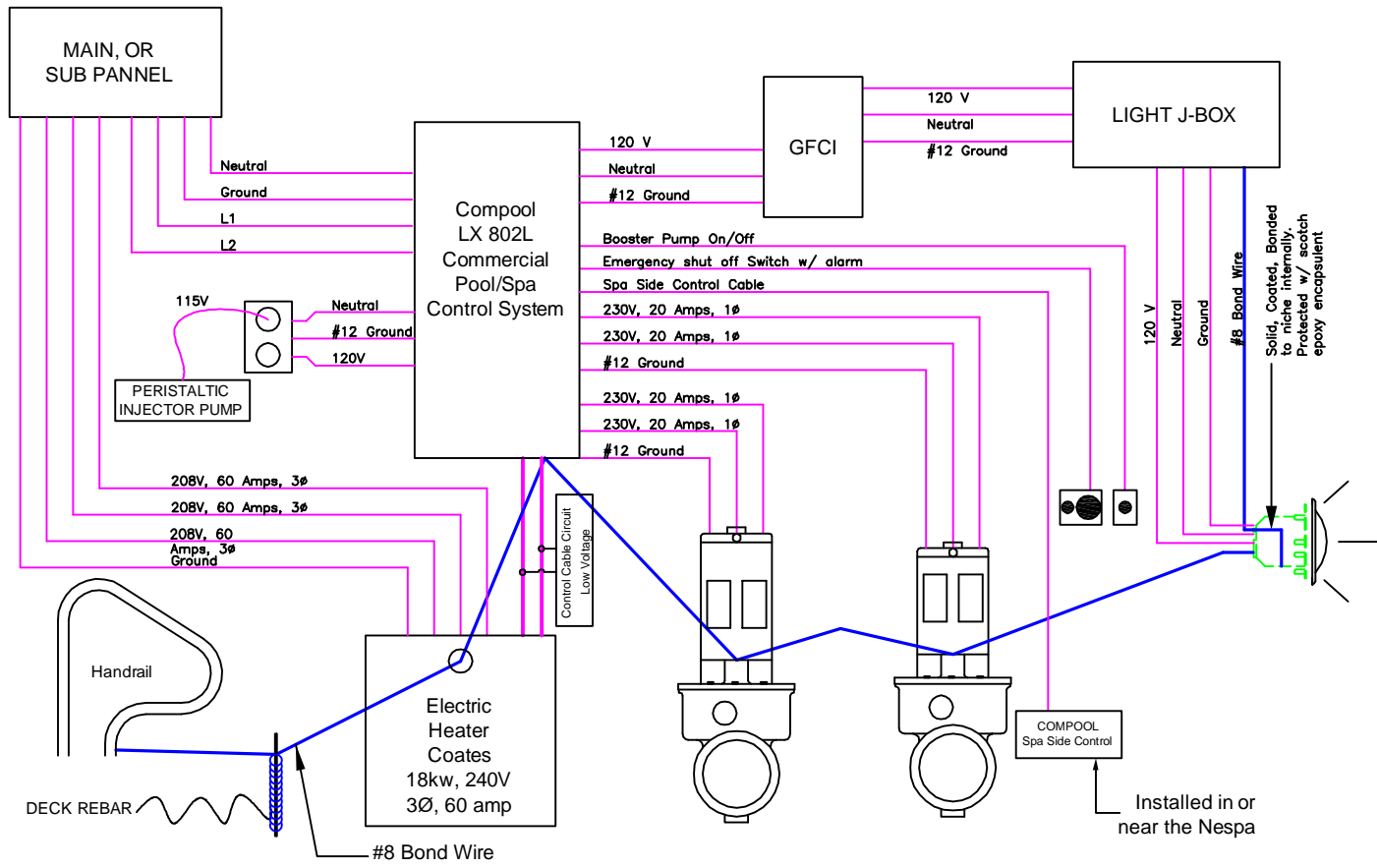
ITEM	DESCRIPTION	MANUFACTURER	CATALOG NO.	QTY.
A	LIGHT NICHE (FOR UNDERWATER LIGHT) W/ 1" HUB	PENTAIR/PACFAB	782423	1
B	SPA BRIGHT UNDERWATER LIGHT, 120 VOLT, 100 WATT, 50' CORD, U.L. APPROVED	PENTAIR/PACFAB	78108100	1
C	LIGHT J-BOX	PENTAIR/PAC FAB	78310700	1
D	SURFACE SKIMMER W/ EQUALIZER, NSF APPROVED	HAYWARD	SP-1084 FVE	1
E	EQUALIZER 4" 3.61 SQ.IN. OPEN AREA, COMPLIES W/ ANSI CODE A112.19	HYDROAIR	10-6806	1
F	HYDRO INLETS, 1 1/2" WATER, 1 1/2" AIR	HYDRO-AIR	10-5100	7
G	INLET FITTINGS, 1 1/2", WALL TYPE, W/ EYEBALL	HYDRO AIR	10-3500	3
H	5" HIGH FLOW SUCTIONS 8.39 SQ. IN. OPEN AREA 208 GPM AT 1.5 FT/SEC WATER VELOCITY, COMPLIES W/ ANSI CODE A112.19 UL APPROVED	WATERWAY	640-3850	4
I	HAND RAIL, STAINLESS STEEL, 4' 0" LENGTH, W/ .065TUBING WALL THICKNESS	S.R. SMITH	DMS-101	2
M	MAIN DRAIN GRATE, 12" X 12" FRAME, 85 SQ. IN. OPEN AREA, 401 GPM @1 1/2 FT/SEC	PAC FAB	54-2020	0
N	ELECTRIC HEATER, 18KW, 61.4K BTU 240 V, 50 AMP, 3 PHASE	COATES	32418CE	1
O	CARTRIDGE FILTER 200 SQ. FT. CLEAN & CLEAR SERIES	PENTAIR/PAC FAB	CC200	1
P	SELFPRIMING PUMP AND MOTOR, 40 GPM @ 60 FT. HEAD, 1/2 HP, 230 VOLT, 20 AMP 1 PHASE, 2" DISCHARGE UNIT WITH PUMP STRAINER	PENTAIR	WFE-2	1
Q	SELFPRIMING PUMP AND MOTOR, 99 GPM @ 60 FT. HEAD, 1 1/2 HP, 230 VOLT, 20 AMP 1 PHASE, 2" DISCHARGE UNIT WITH PUMP STRAINER	PENTAIR	WFE-6	1
R	BALL VALVE, 2" SLIP X SLIP	SPEARS	2612-020	4
S	VACUUM GAGE, 0" TO 30", 2-1/2" DIA.	ASHCROFT	GB20PA02LKVAC	1
T	PRESSURE GAUGE, 0 TO 60 PSI, 2-1/2 DIA.	AHSCROFT	B20PA02RK60	1
U	FLOW METER, 2" 40 TO 125 GPM SCALE	BLUE WHITE	F30200P	1
U	WATER LEVEL CONTROL DEVICE	LEVOLOR	LX2	1
V	BROMINATOR, AUTOMATIC TYPE, OFF LINE	PENTAIR	300	1
X	CONTROLS SYSTEM, POWER CENTER, DUAL TIME CLOCKS, REMOTE EMERGENCY SHUT OFF SWITCH AND JET ACTIVATION BUTTON (LOCATED ADJACENT TO SPA)	COMPOOL	LX802L	1



SIZE A	DWG TYPE Equipment List	DWG NO. MONTROSE	REV 1
SCALE 1/2" = 1'-0"		DATE 2/19/2007	SHEET PAGE 6 OF 10

NOTE:
 THIS SCHEMATIC IS FOR CONCEPTUAL PURPOSES ONLY AND IS BASED ON SINGLE PHASE POWER INPUT. IF THREE PHASE POWER INPUT IS USED THEN CONSULT A LICENSED ELECTRICIAN AND COMPLY WITH ALL APPLICABLE NATIONAL AND LOCAL CODES.

2 PUMP - Electric Heater - High Voltage Light

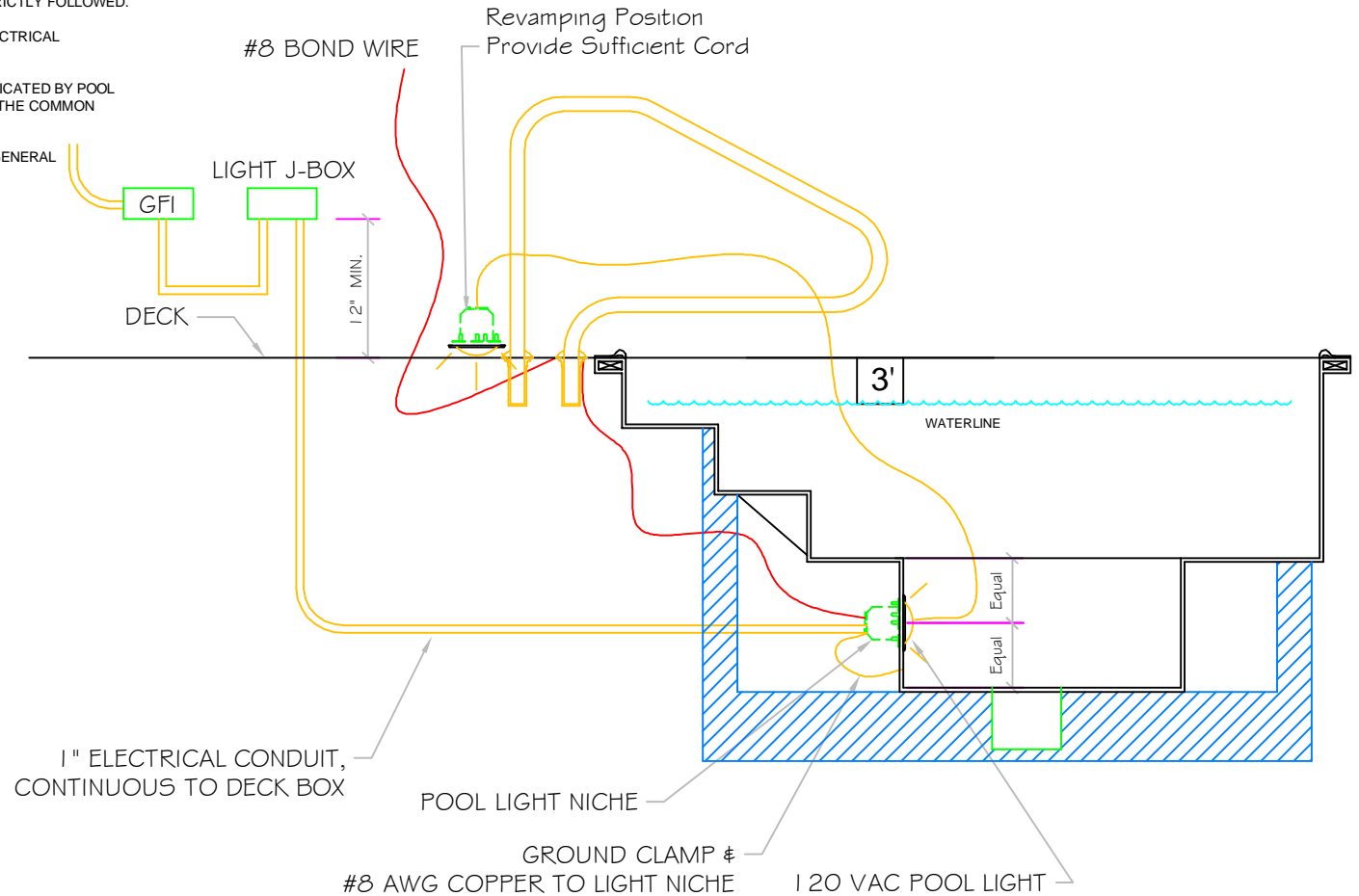


SIZE A	DWG TYPE Electrical	DWG NO. MONTROSE	REV 1
SCALE N/A	DATE 2/19/2007	SHEET PAGE 7 OF 10	

POOL BONDING REQUIREMENTS:

1. THE FOLLOWING PARTS SHALL BE BONDED TOGETHER AND CONNECTED TO THE COMMON BONDING GRID.
 - A. ALL THE METALLIC PARTS OF THE POOL STRUCTURE INCLUDING COPING STONES, DECK, PERMANENT PLAY STRUCTURES, PERMANENT EXERCISE STRUCTURES.
 - B. ALL METAL FITTINGS WITHIN OR ATTACHED TO THE POOL STRUCTURE
 - C. METAL PARTS ASSOCIATED WITH THE POOL WATER CIRCULATING SYSTEM, INCLUDING PUMPS, FILTERS, AND HEATERS.
 - D. METAL PARTS ASSOCIATED WITH POOL COVERS
 - E. METAL SHEATHED CABLES AND RACEWAYS, METAL PIPING AND ALL FIXED METAL PARTS WITHIN 5 FEET HORIZONTALLY OF INSIDE WALLS OF POOL AND WITHIN 12 FEET ABOVE MAXIMUM WATER LEVEL OF POOL.
 - F. METAL PARTS ASSOCIATED WITH OBSERVATION STANDS, TOWERS, PLATFORMS, AND DIVING STRUCTURES.
2. BONDING CONDUCTORS SHALL BE MINIMUM #8 SOLID COPPER, INSULATED E.C. SHALL COORDINATE APPROVED CONNECTOR TYPE AND METHOD WITH LOCAL ELECTRICAL AND/OR POOL INSPECTOR.
3. SPECIFIC MANUFACTURER'S INSTRUCTIONS REGARDING BONDING OR GROUNDING OF POOL EQUIPMENT, WHETHER INDICATED HEREIN OR NOT, SHALL BE STRICTLY FOLLOWED.
4. THE COMMON BONDING GRID SHALL NOT BE CONNECTED TO ANY ELECTRICAL DISTRIBUTION EQUIPMENT.
5. ANY PARTS IN ADDITION TO THOSE DESCRIBED HEREIN THAT ARE INDICATED BY POOL CONTRACTOR OR LOCAL INSPECTION AUTHORITY SHALL BE BONDED TO THE COMMON BONDING GRID WITH NO ADDITIONAL COSTS INCURRED BY THE OWNER.
6. THE ELECTRICAL CONTRACTOR SHALL COORDINATE BONDING WITH GENERAL CONTRACTOR.

LIGHT DETAIL



SIZE A	DWG TYPE Bonding Detail	DWG NO. MONTROSE	REV 1
SCALE N/A	DATE 2/20/2007	SHEET PAGE 8 OF 10	

1

2

3

4

5

6

A

B

C

D

E

F

A

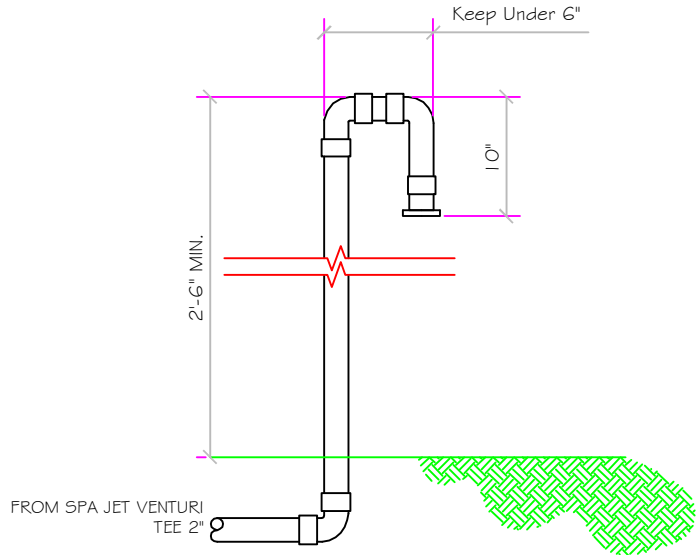
B

C

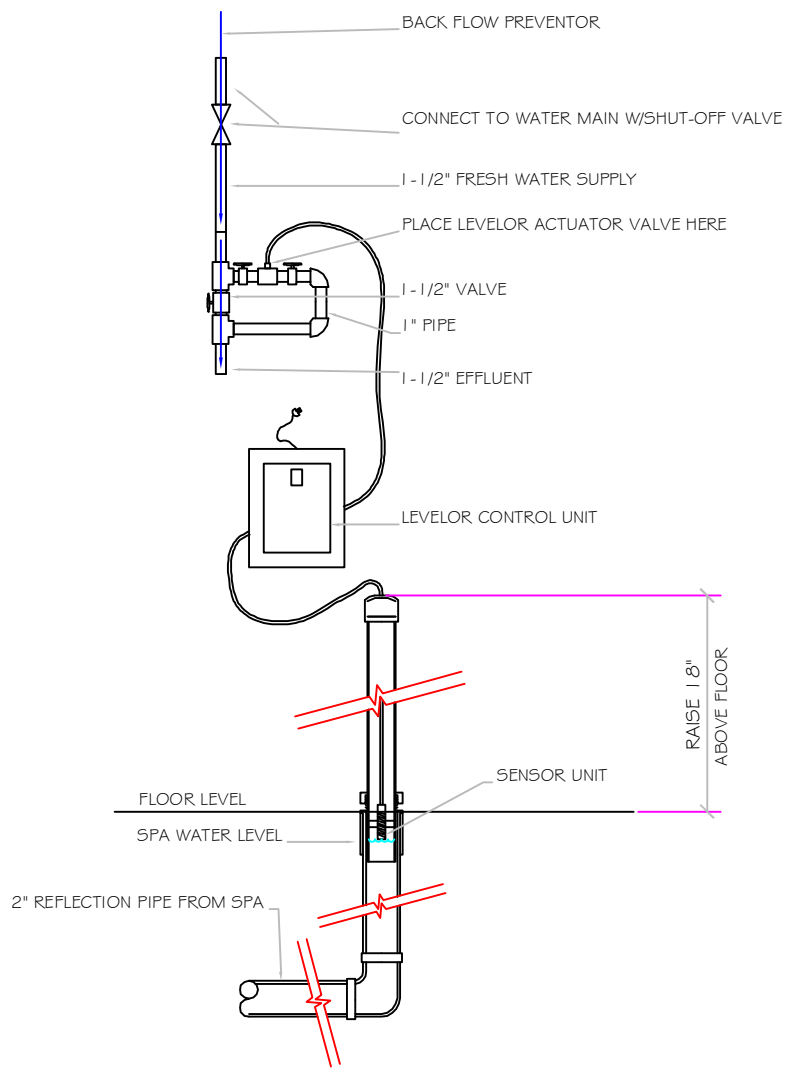
D

E

F



AIR SUPPLY LOOP DETAIL



WATER LEVEL CONTROL



SIZE A	DWG TYPE Plumbing Detail	DWG NO. MONTROSE	REV 1
SCALE 3/4" = 1'		DATE 2/20/2007	SHEET PAGE 9 OF 10

1 2 3 4 5 6

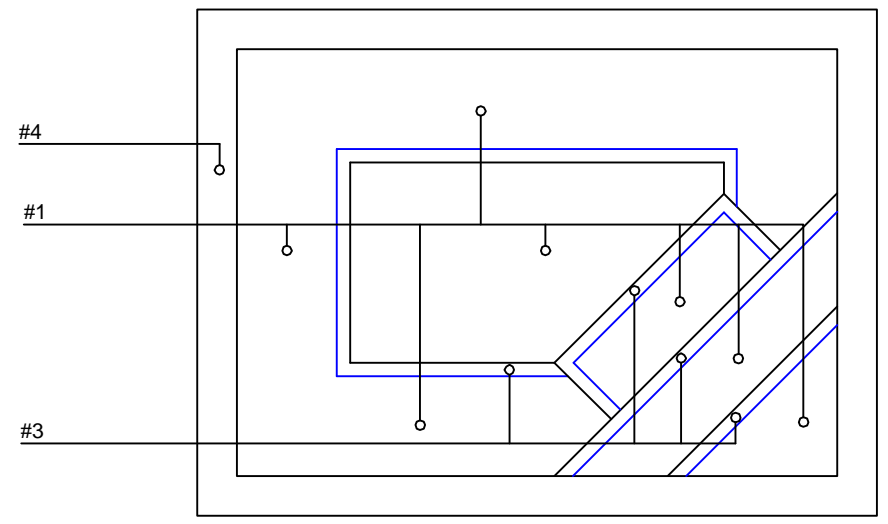
A

- #1 - FIELD TILE: _____
- #2 - WATERLINE (optional): _____
- #3 - BENCH & STEP EDGES (optional): _____
- #4 - TILED LIP (optional): _____

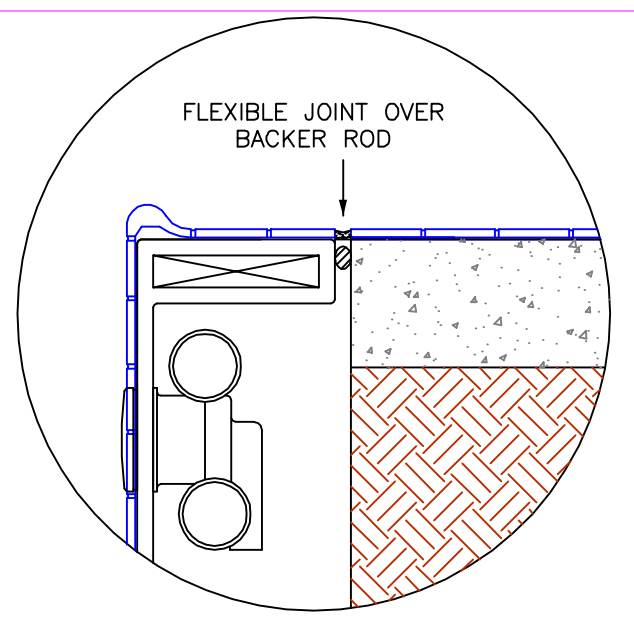
B

Date: _____
 Approval: _____

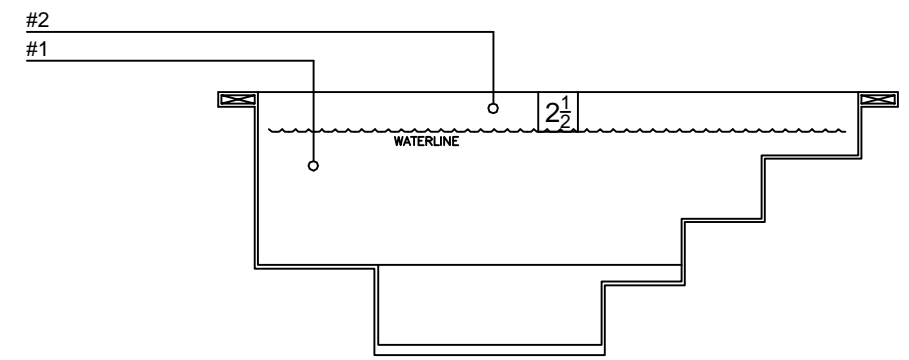
C



D




E



F

American Olean C701 coping tile
 for commercial application

	SIZE	DWG TYPE	DWG NO.	REV
	A	TILE	MONTROSE	0
SCALE	N/A	DATE	SHEET	
		2/19/2007	PAGE 10 OF 10	

1 2 3 4 5 6



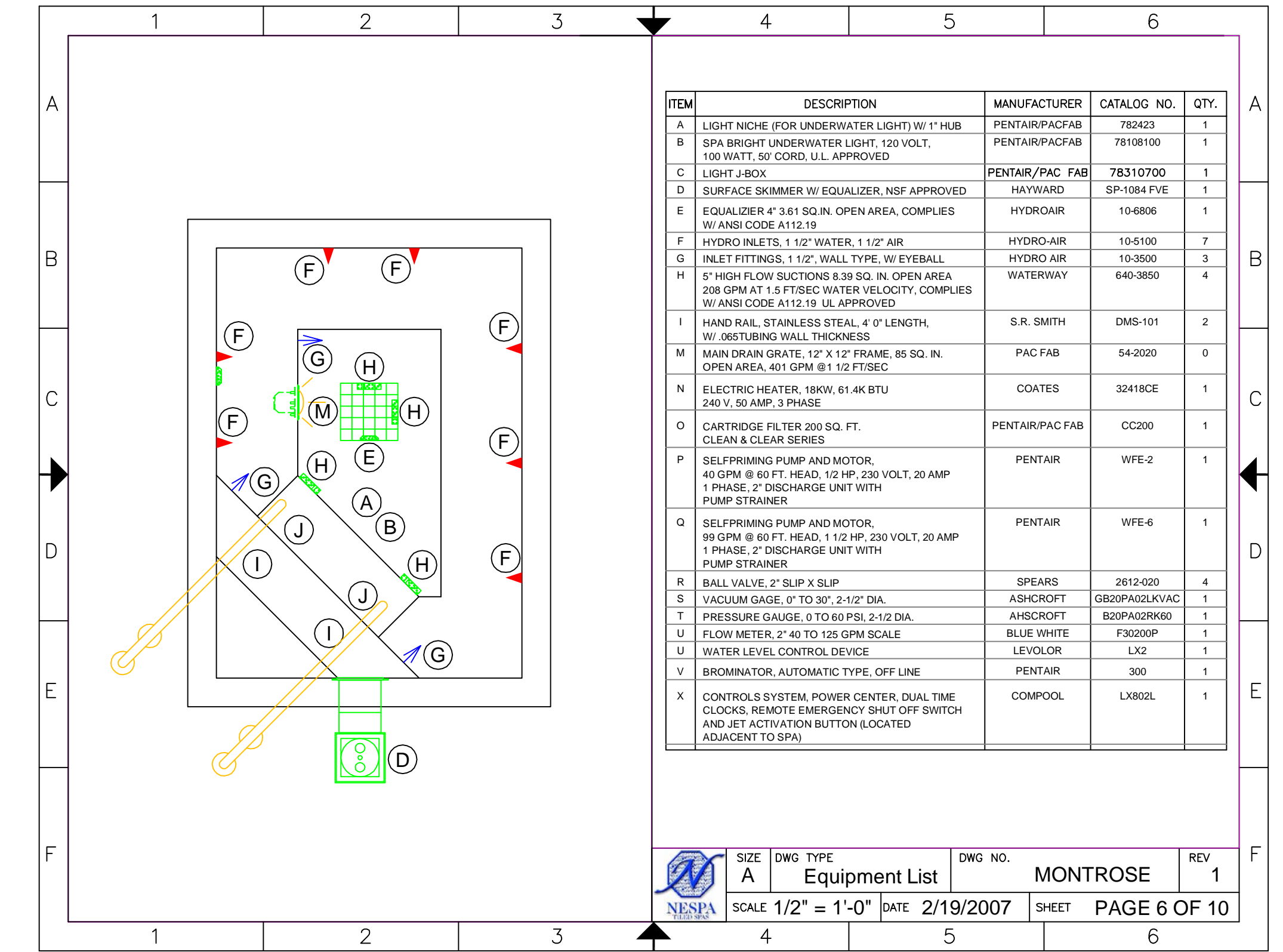
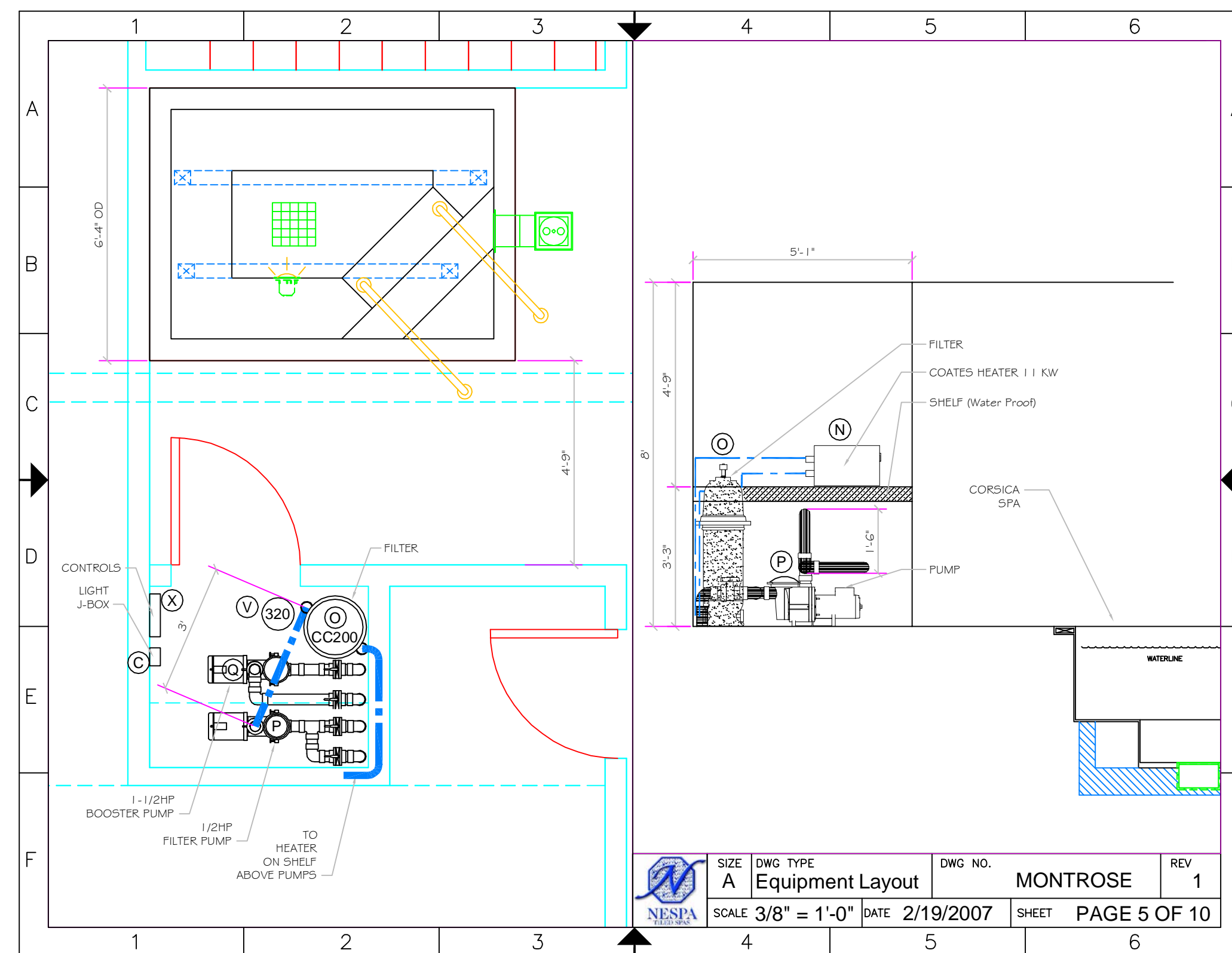
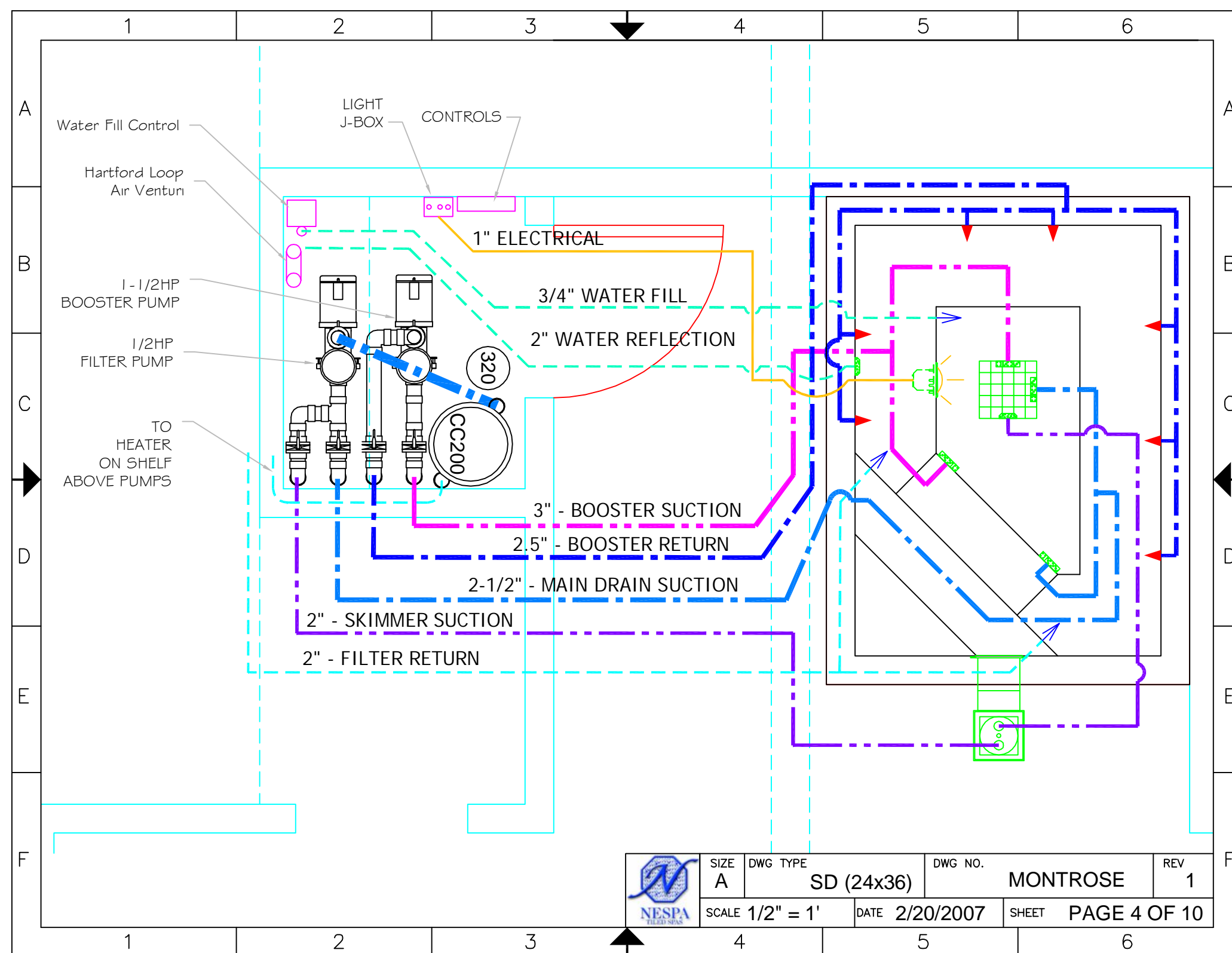
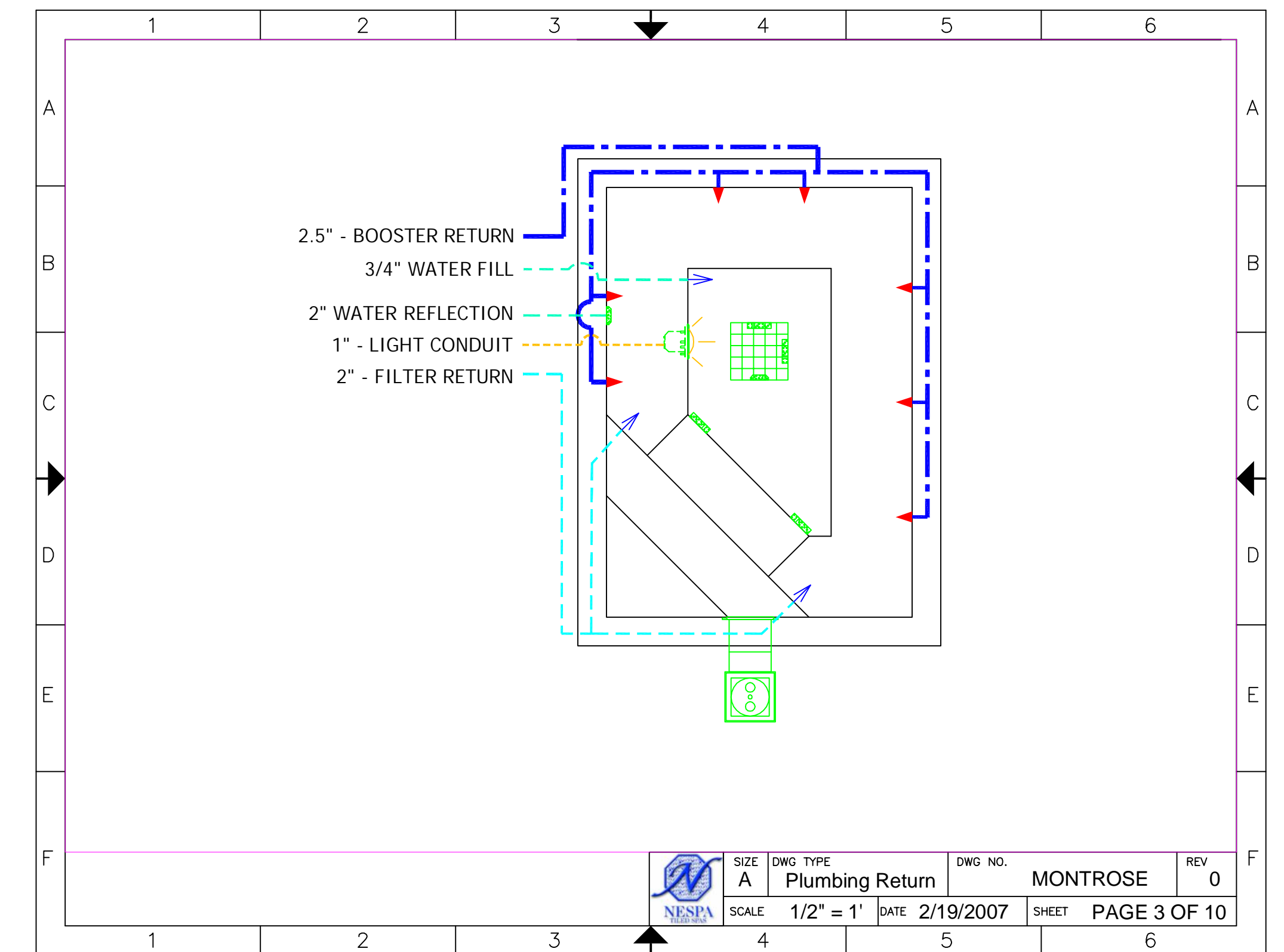
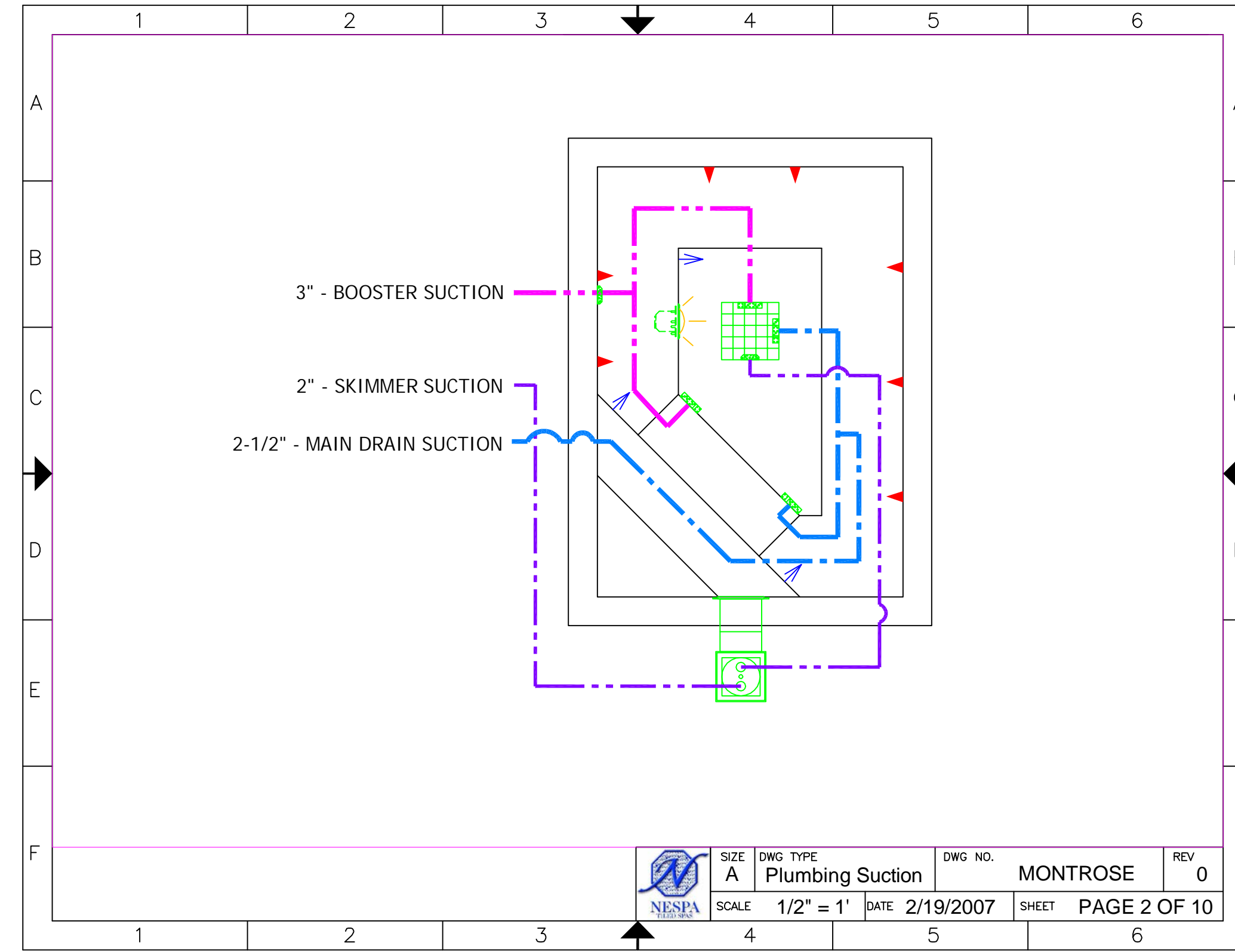
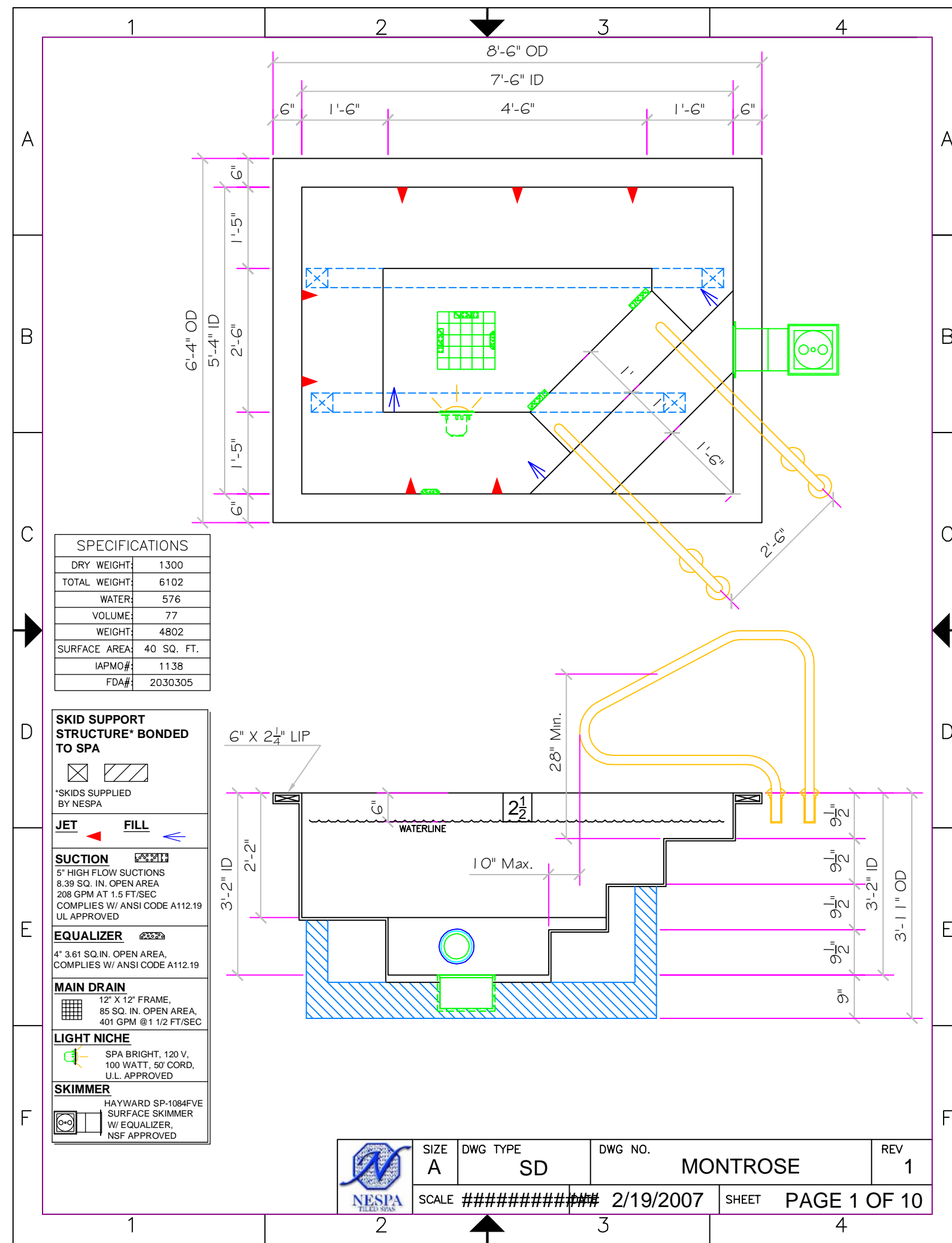
NESPA ENTERPRISES INC.
 2800 Richter Ave. Suite C
 Oroville, CA 95966
 Office: (530) 534-9910
 Fax: (530) 534-9915
 E-Mail: sales@tiledspas.com
 Web Site: www.tiledspas.com

CORSICA

Spa Details and Plumbing Details

ALL DIMENSIONS SUBJECT TO 1/4" TOLERANCES

SCALE: N/A
 DATE: 2/20/2007
 JOB: MONTROSE
 DR#: SD (24x36) 1 OF 3





NESPA ENTERPRISES INC.

2800 Richter Ave. Suite C

Oroville, CA 95966

Office: (530) 534-9910

Fax: (530) 534-9915

E-Mail: sales@tiledspas.com

Web Site: www.tiledspas.com

CORSICA SPA DETAILS

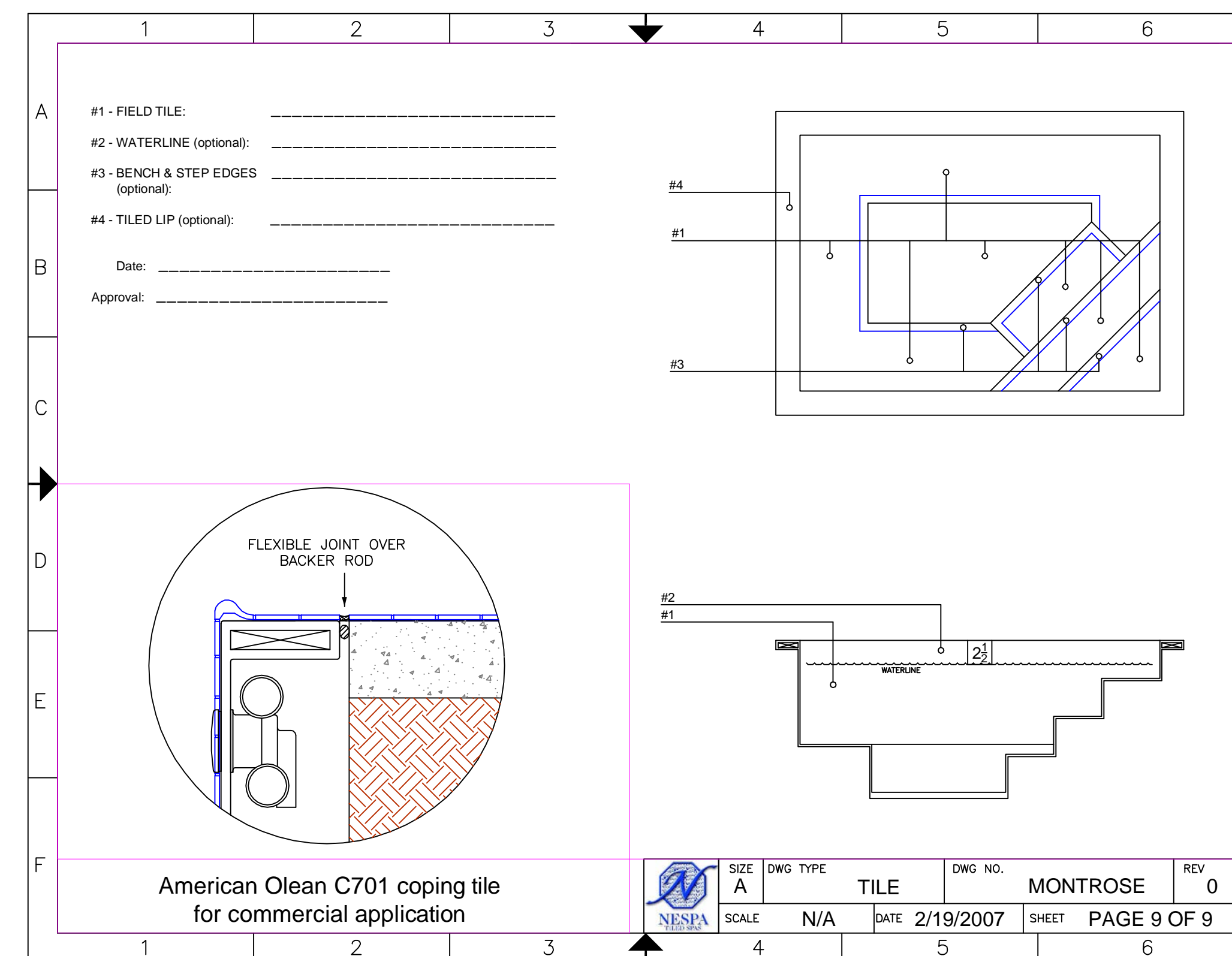
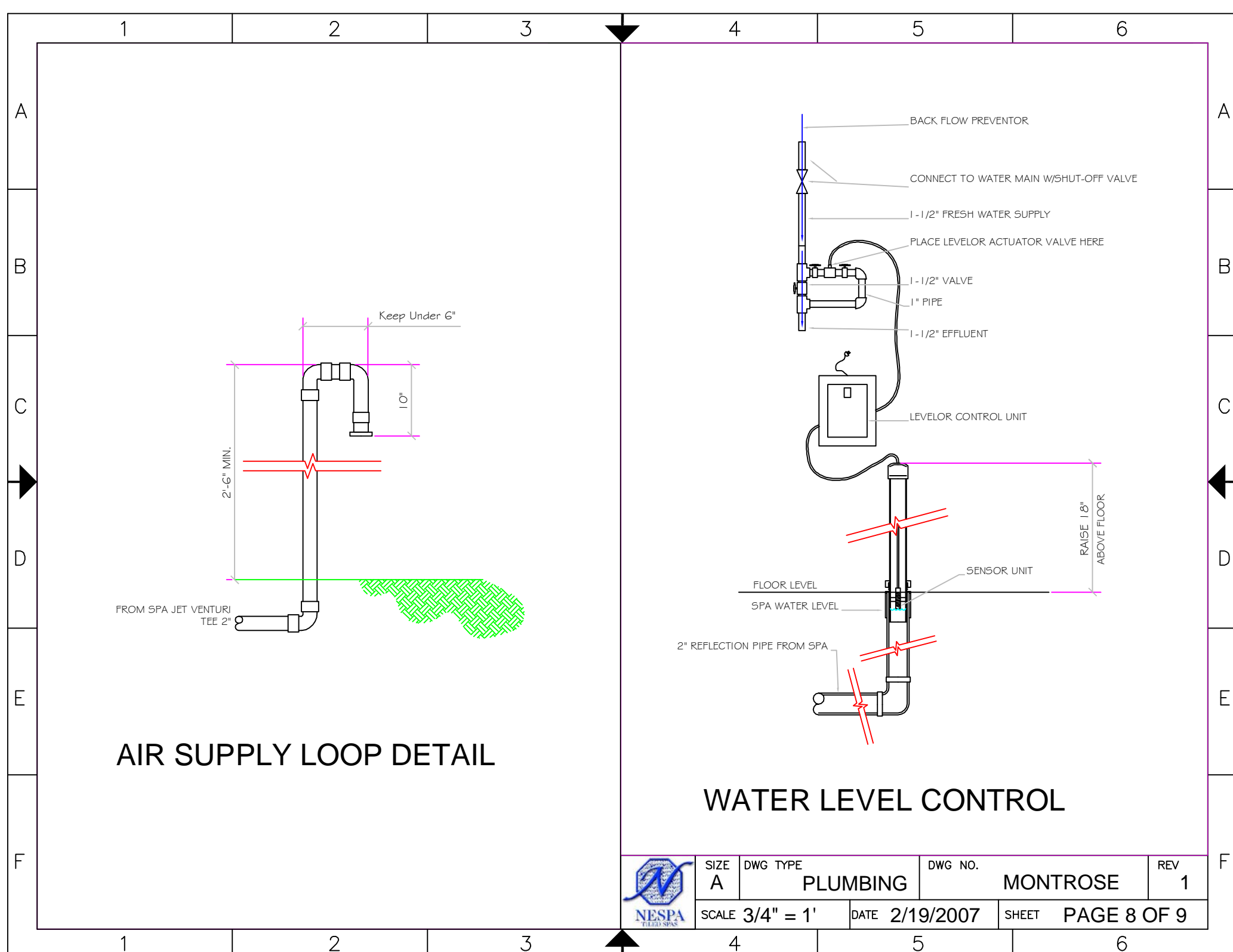
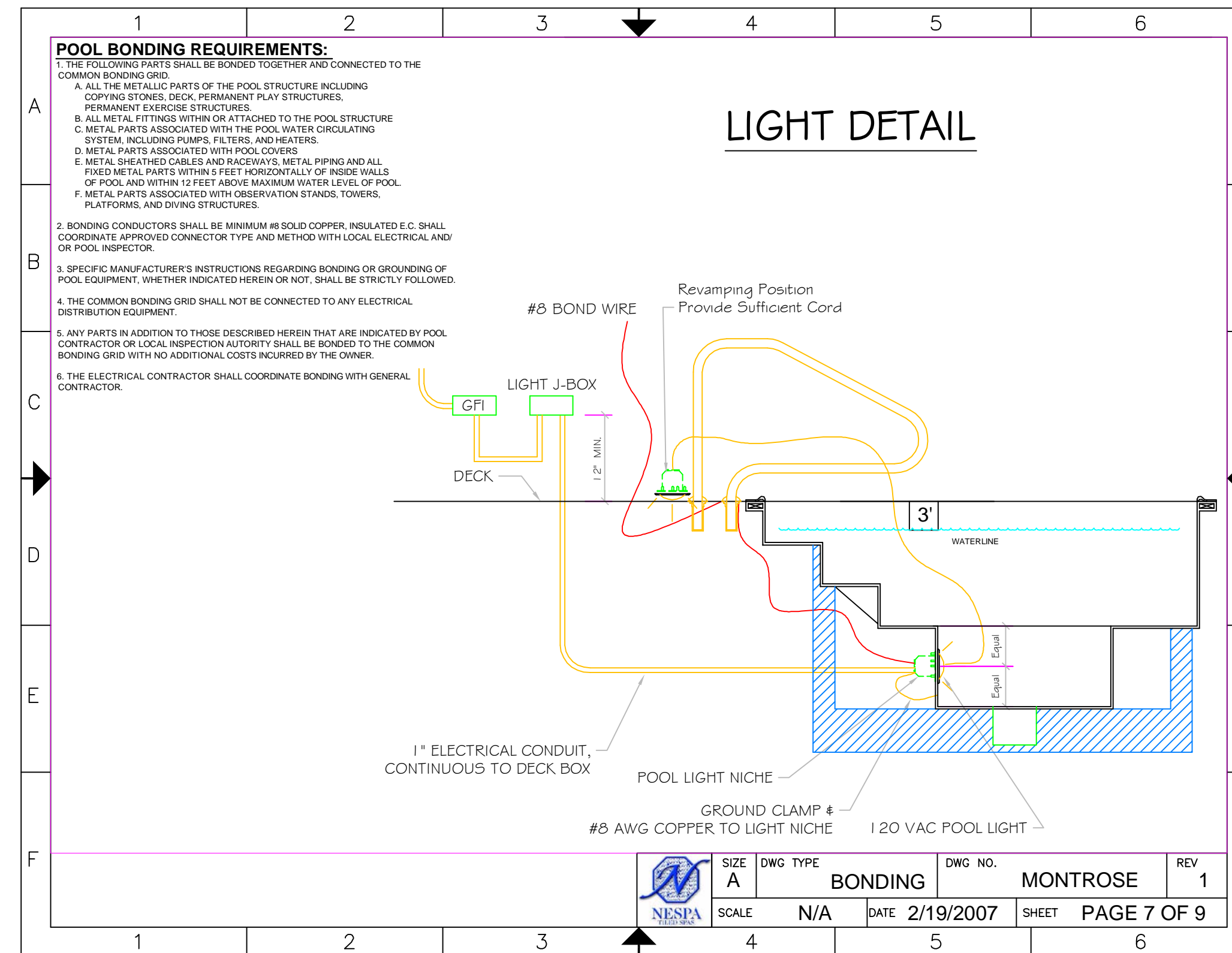
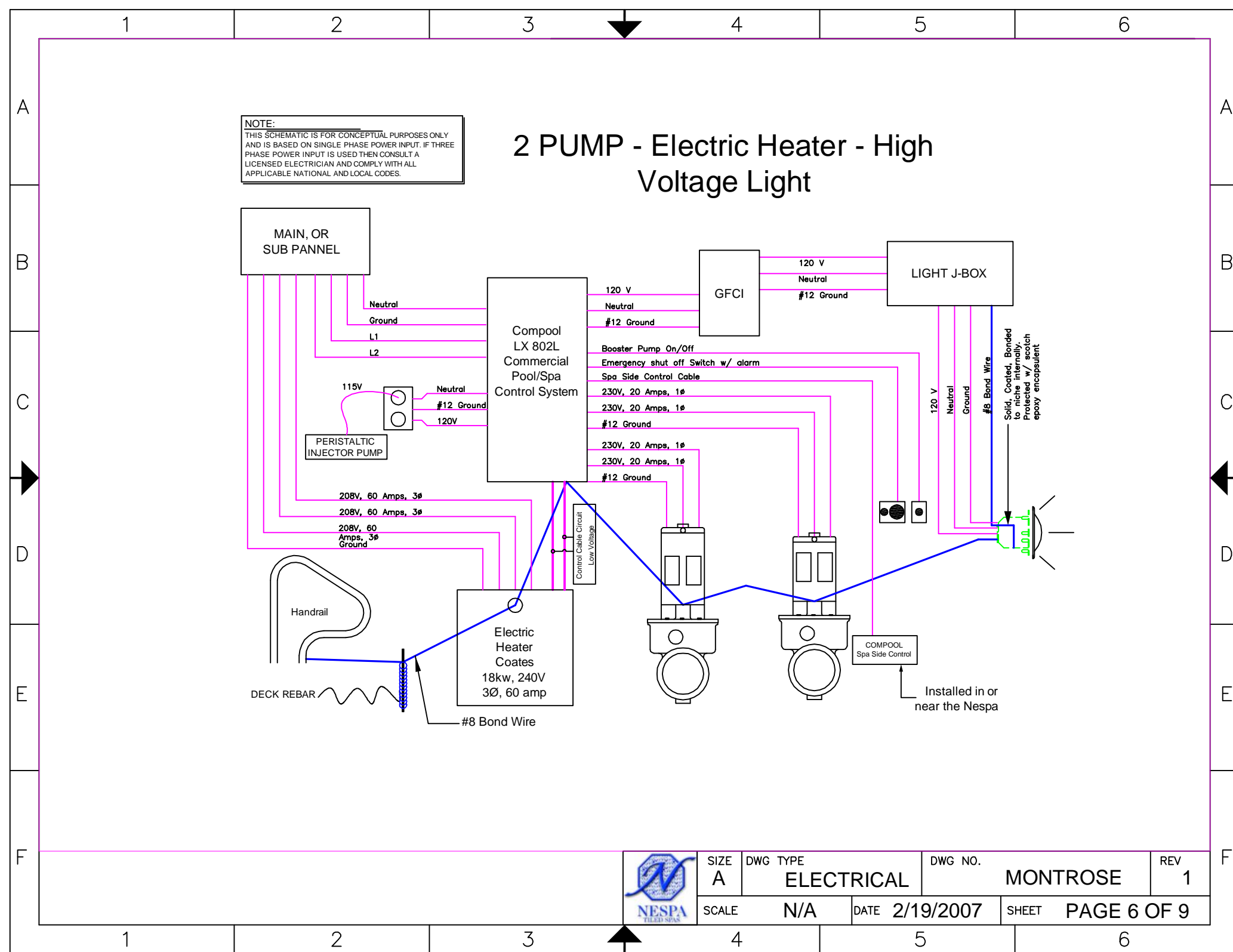
ALL DIMENSIONS SUBJECT TO 1/4" TOLERANCES

SCALE: N/A

DATE: 2/19/2007

JOB: MONTROSE

DR#: SPA DETAILS 2 OF 3





NESPA ENTERPRISES INC.
 2800 Richter Ave. Suite C
 Oroville, CA 95966
 Office: (530) 534-9910
 Fax: (530) 534-9915
 E-Mail: sales@tiledspas.com
 Web Site: www.tiledspas.com

CORSICA

EQUIPMENT DOCUMENTS

ALL DIMENSIONS SUBJECT TO 1/4" TOLERANCES

SCALE: N/A
 DATE: 2/19/2007
 JOB: MONTROSE
 DR#: EQ DOCS 3 OF 3

A

B

D

D

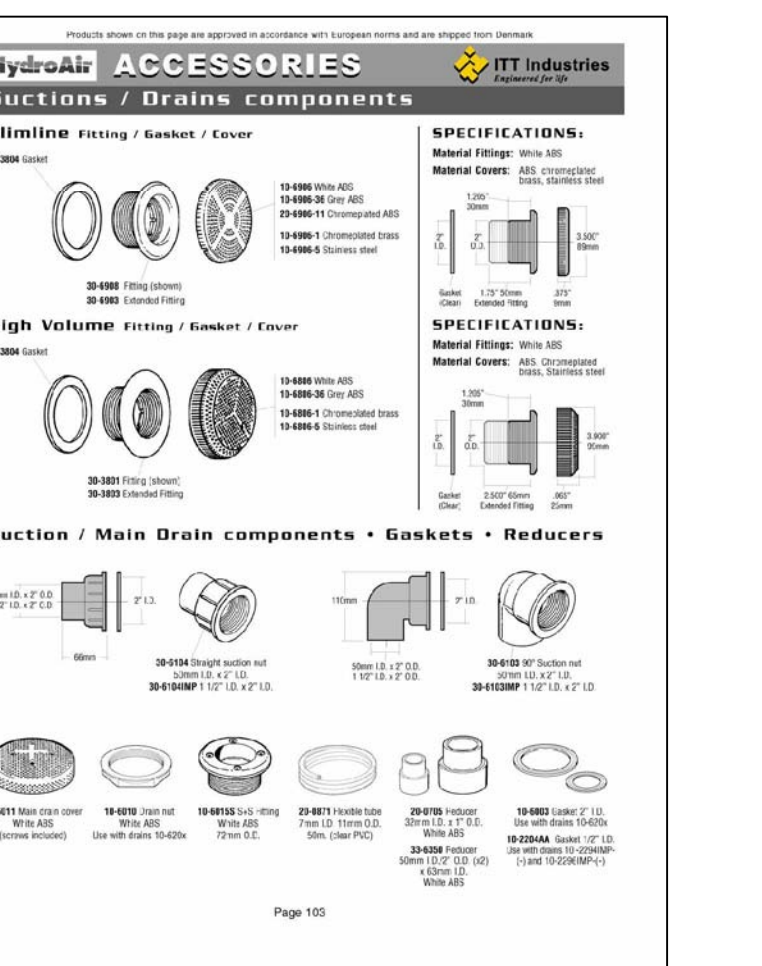
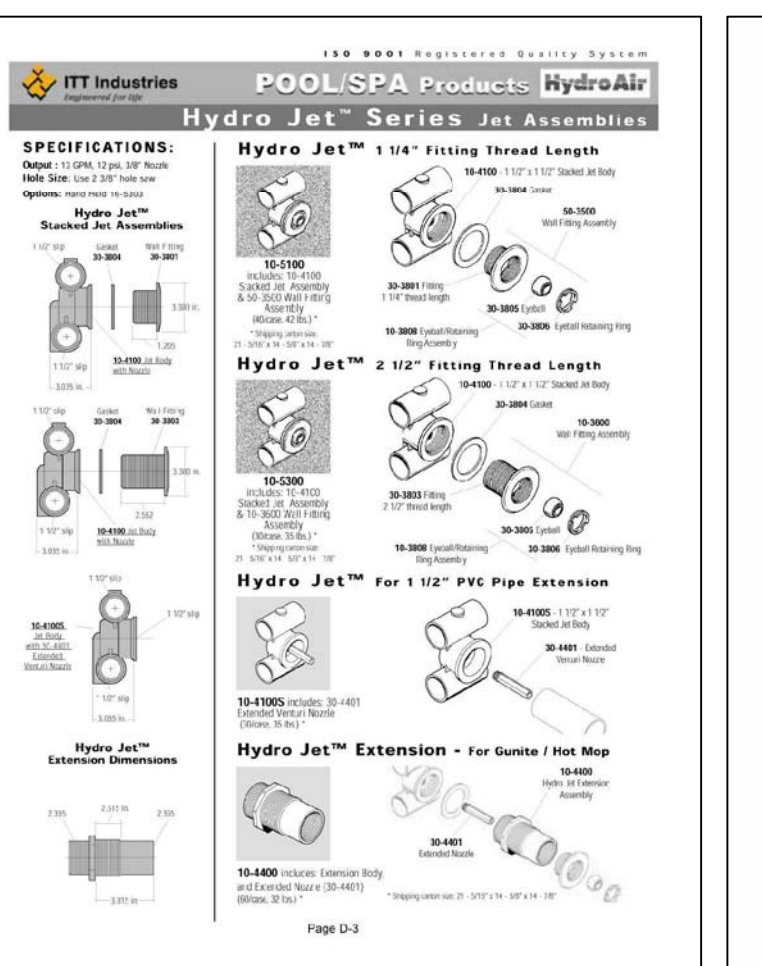
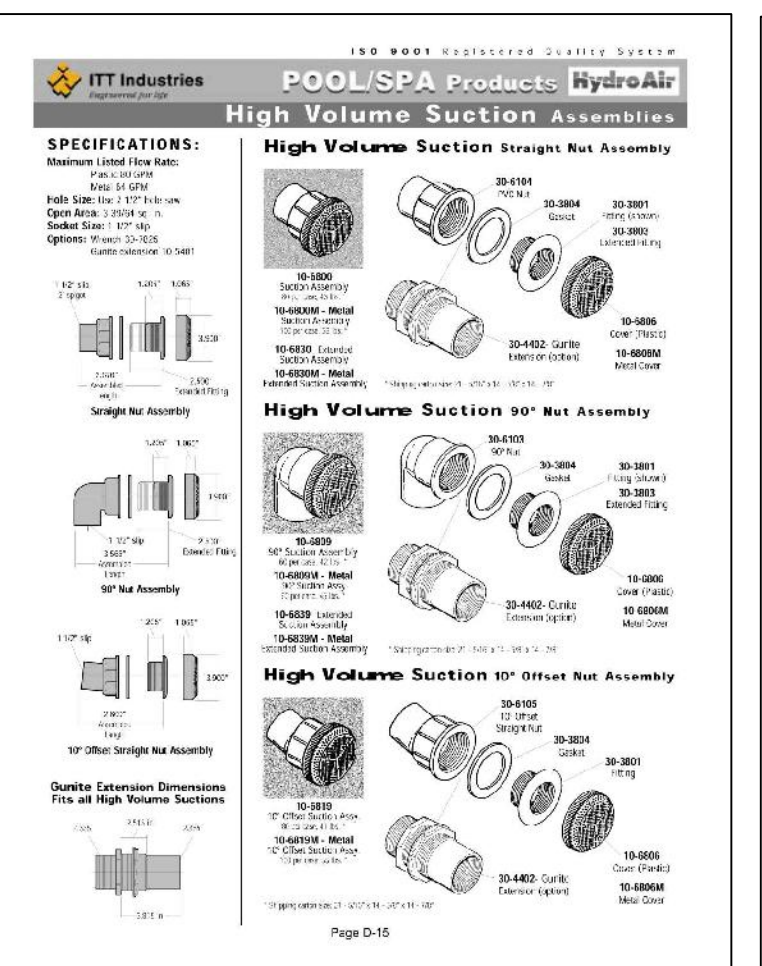
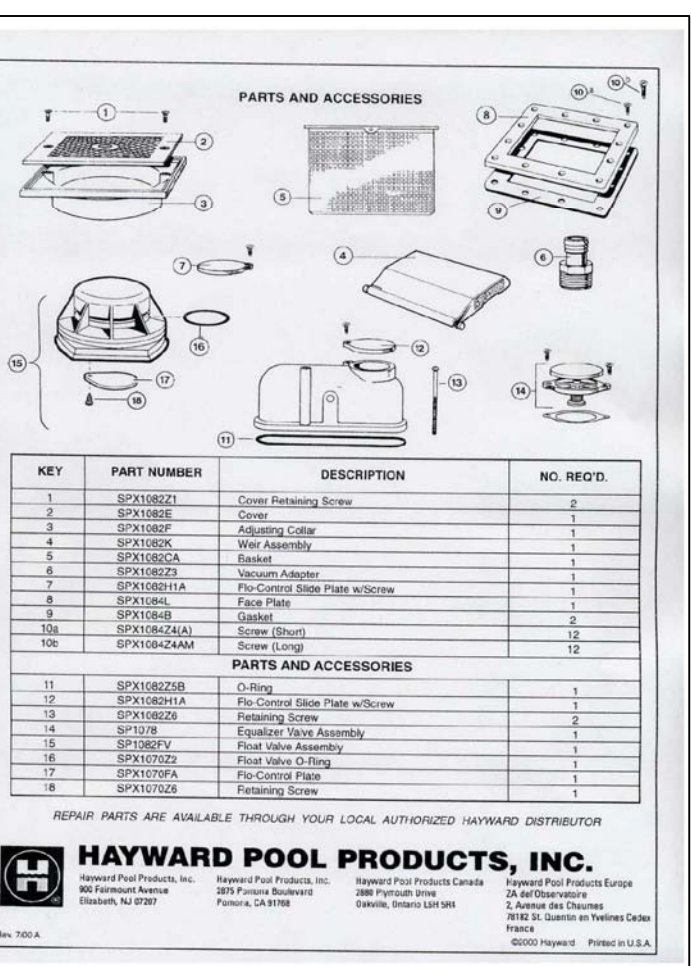
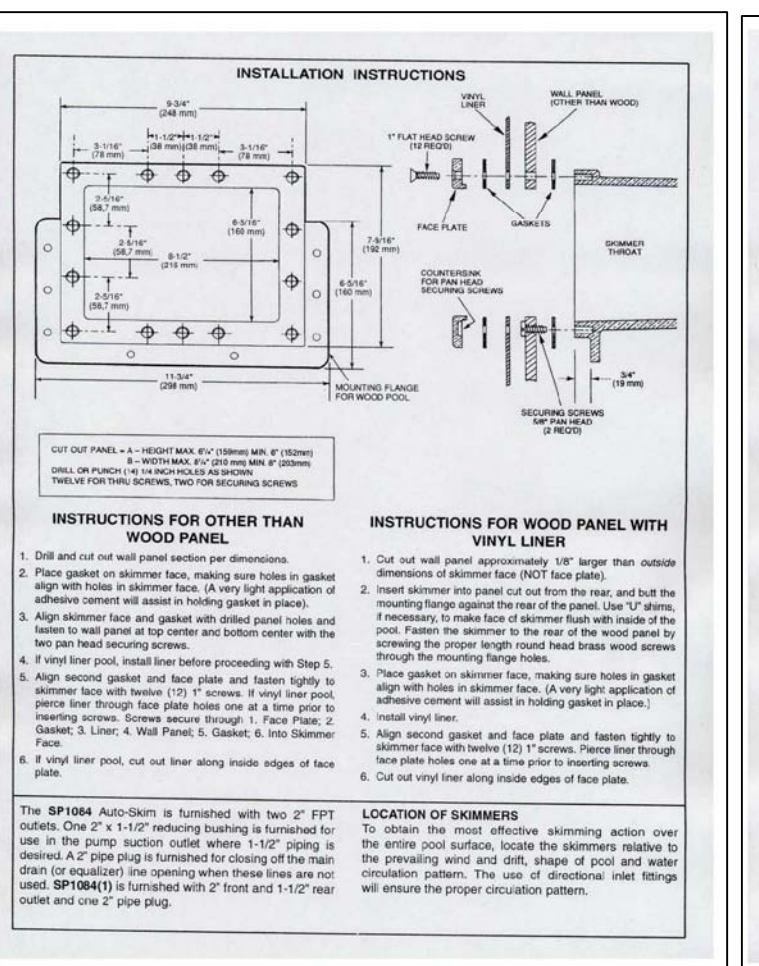
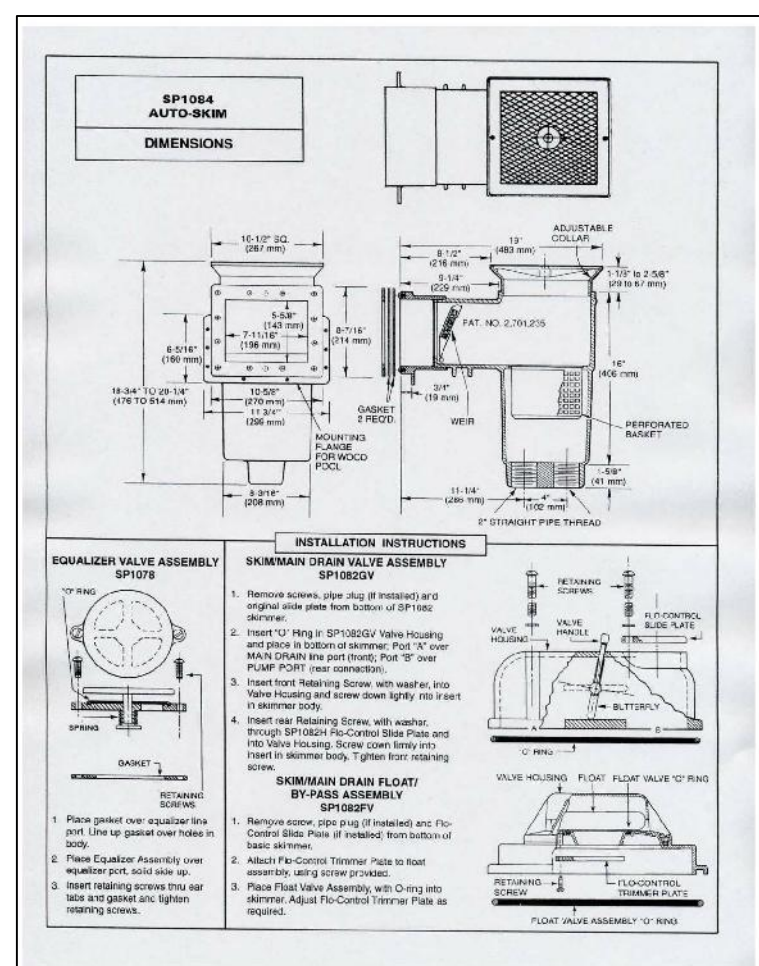
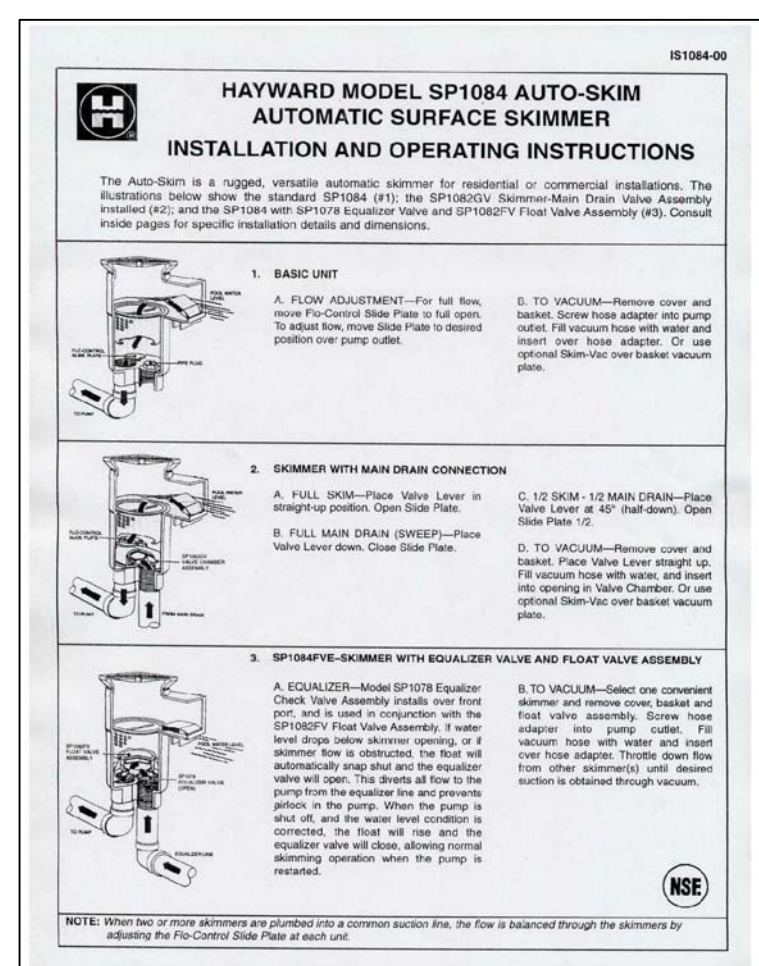
D

D

E

F

G



H

K

N

O

P

Q

V

X

