



NESPA ENTERPRISES INC.

2800 Richter Ave. Suite C
 Oroville, CA 95966
 Office: (530) 534-9910 Fax: (530) 534-9915
 E-Mail: sales@tiledspas.com
 Web Site: www.tiledspas.com

13' LEGACY

POOL LAYOUT

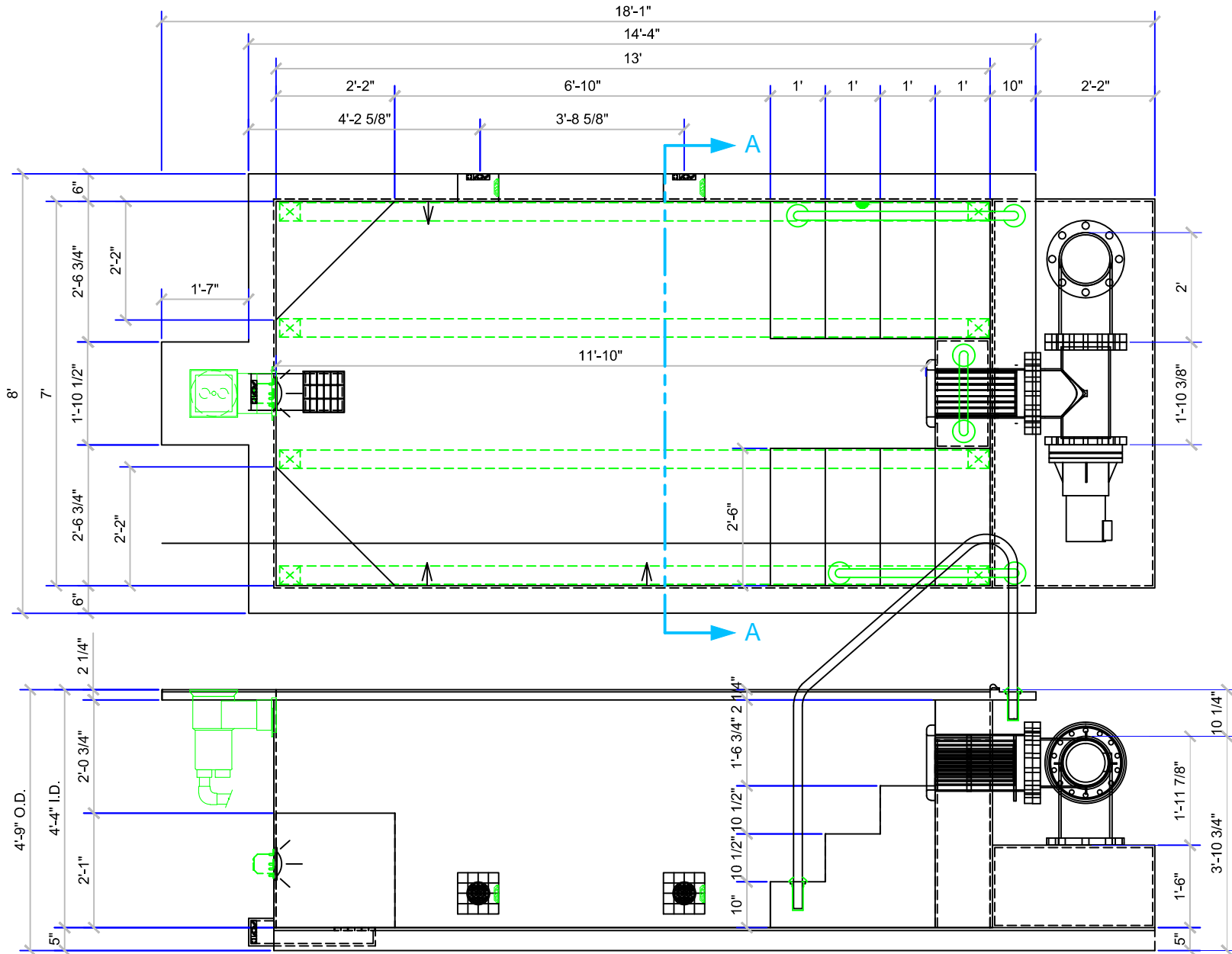
SCALE: 3/8" = 1'-0"

DATE: 3/29/2006

JOB: LEFT BANK

DR#:LFB-LGC- PL07

ALL DIMENSIONS SUBJECT TO 1/4" TOLERANCES





NESPA ENTERPRISES INC.

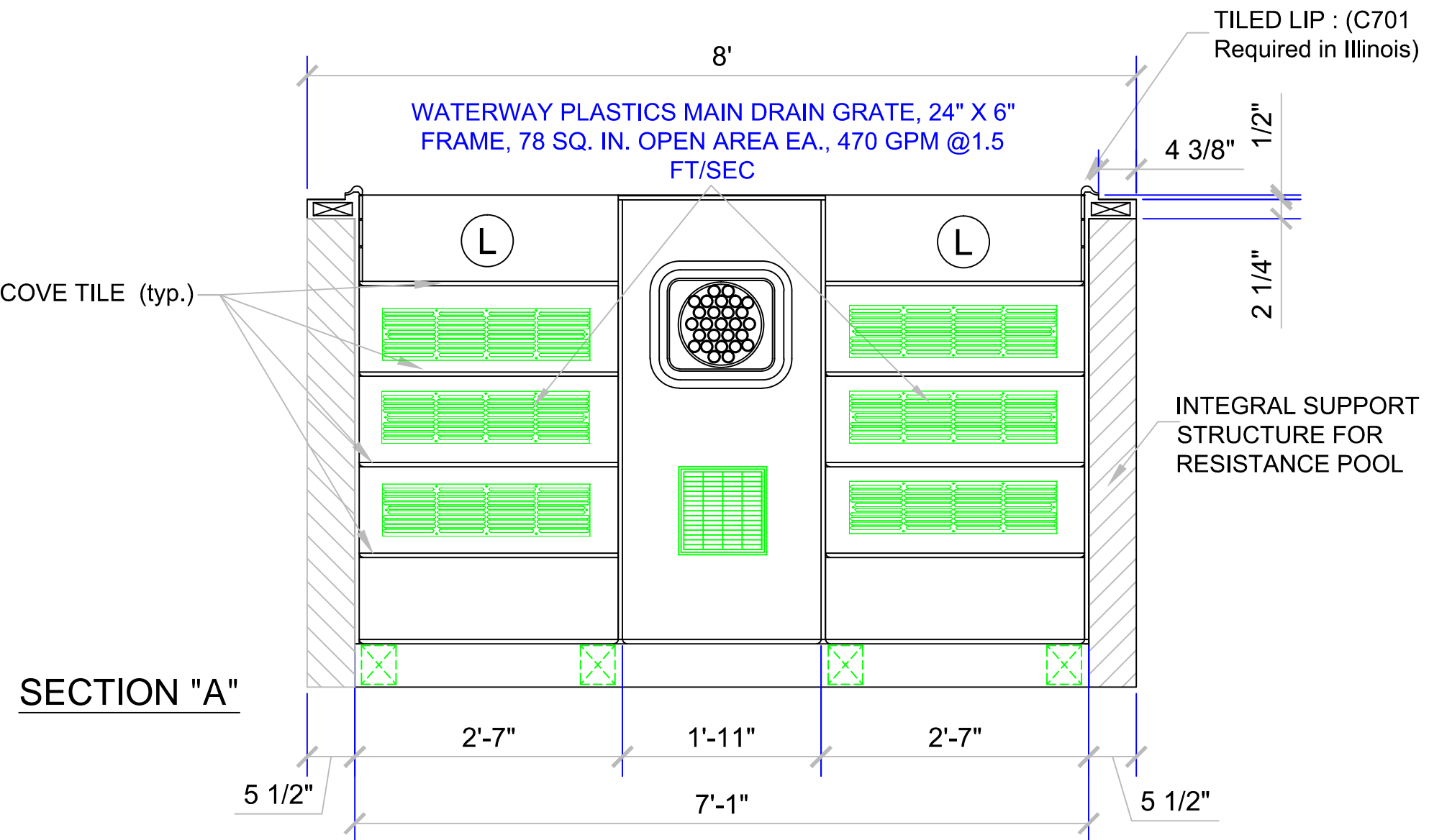
2800 Richter Ave. Suite C
Oroville, CA 95966
Office: (530) 534-9910 Fax: (530) 534-9915
E-Mail: sales@tiledspas.com
Web Site: www.tiledspas.com

13' LEGACY

POOL LAYOUT SECTION A

ALL DIMENSIONS SUBJECT TO 1/4" TOLERANCES

SCALE: 3/4" = 1'-0"
DATE: 3/14/2006
JOB: LEFT BANK
DR#:LFB-LGC- PLS10



SECTION "A"

These drawings, concepts, and details contained herein are the original proprietary designs of NESPA ENTERPRISES, developed over many years of experience in the pool and spa industry and as such are protected by the copyright laws of the United States Government. Reproduction of any of the above without written permission to do so by NESPA ENTERPRISES, is illegal.



NESPA ENTERPRISES INC.

2800 Richter Ave. Suite C
 Oroville, CA 95966
 Office: (530) 534-9910 Fax: (530) 534-9915
 E-Mail: sales@tiledspas.com
 Web Site: www.tiledspas.com

13' LEGACY

POOL TILE DETAIL

ALL DIMENSIONS SUBJECT TO 1/4" TOLERANCES

SCALE: 3/8" = 1'-0"

DATE: 3/15/2006

JOB: LEFT BANK

DR#:LFB-LGC- TD06

HOW TO SELECT TILE FOR YOUR SPA

1) CHOOSE THE MANUFACTURER:

-Dal Tile or American Olean

2) CHOOSE THE SIZE:

-Tile size 2"x2" is a standard commercially approved tile.
 Tile must be non-glazed and slip-resistant.
 We recommend Dal's Keystones Mosaic Unglazed series.
 -All spas that are round or have radius design shall have
 2" X 2" or 1" X 1" tile only

3) CHOOSE THE LAYOUT:

When selecting tile for your Nespa spa you can select one color or several. This diagram reflects suggested area's to tile. Availability of tile can vary or be limited. Fill in the blanks with the type of tile you would like in the corresponding areas of your spa. Fax this and all other spa information to us at (530)534-9915 when you are finished choosing your spa.

4) NOTE:

The quoted spa price includes a \$5.00 per sq. ft. tile cost allowance. If the tile cost exceeds this allowance than the customer is required to pay the difference.

Our manufacturing process requires the use of tile before production of the spa begins. For this reason we strongly suggest that you check with Nespa as to tile availability and possible shipping delays. Lead time starts with the order of tile.

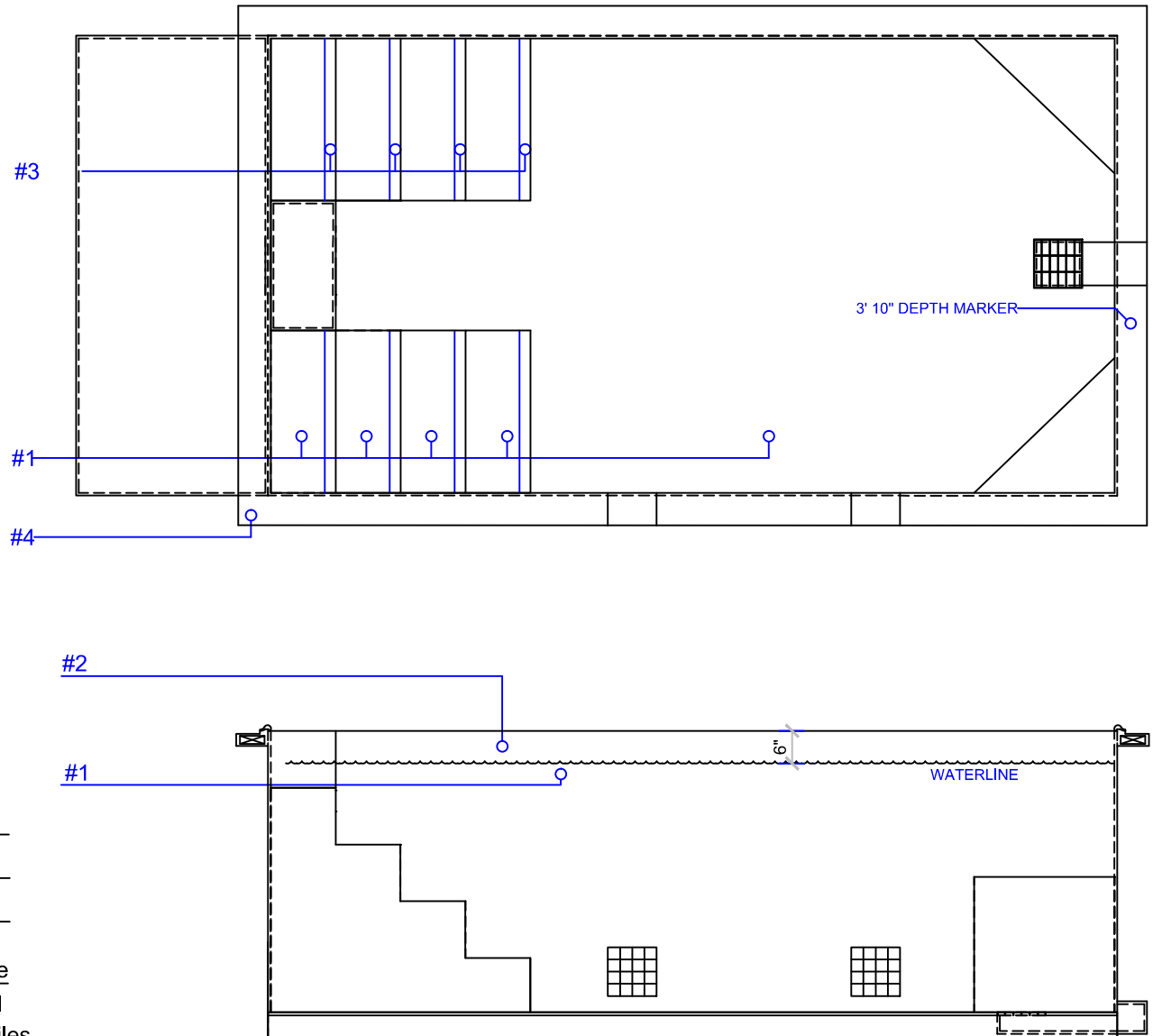
#1 - FIELD TILE: D178 Bombay

#2 - WATERLINE (optional): D023 Cobalt Blue

#3 - BENCH & STEP EDGES (optional): D023 Cobalt Blue

#4 - TILED LIP (optional): Use C701 in color D023 Cobalt Blue
 (C701 Required in Illinois)

only where required by code. In all other locations use CT-1 12"x12" Tiles (as shown in contract documents). Install in field.





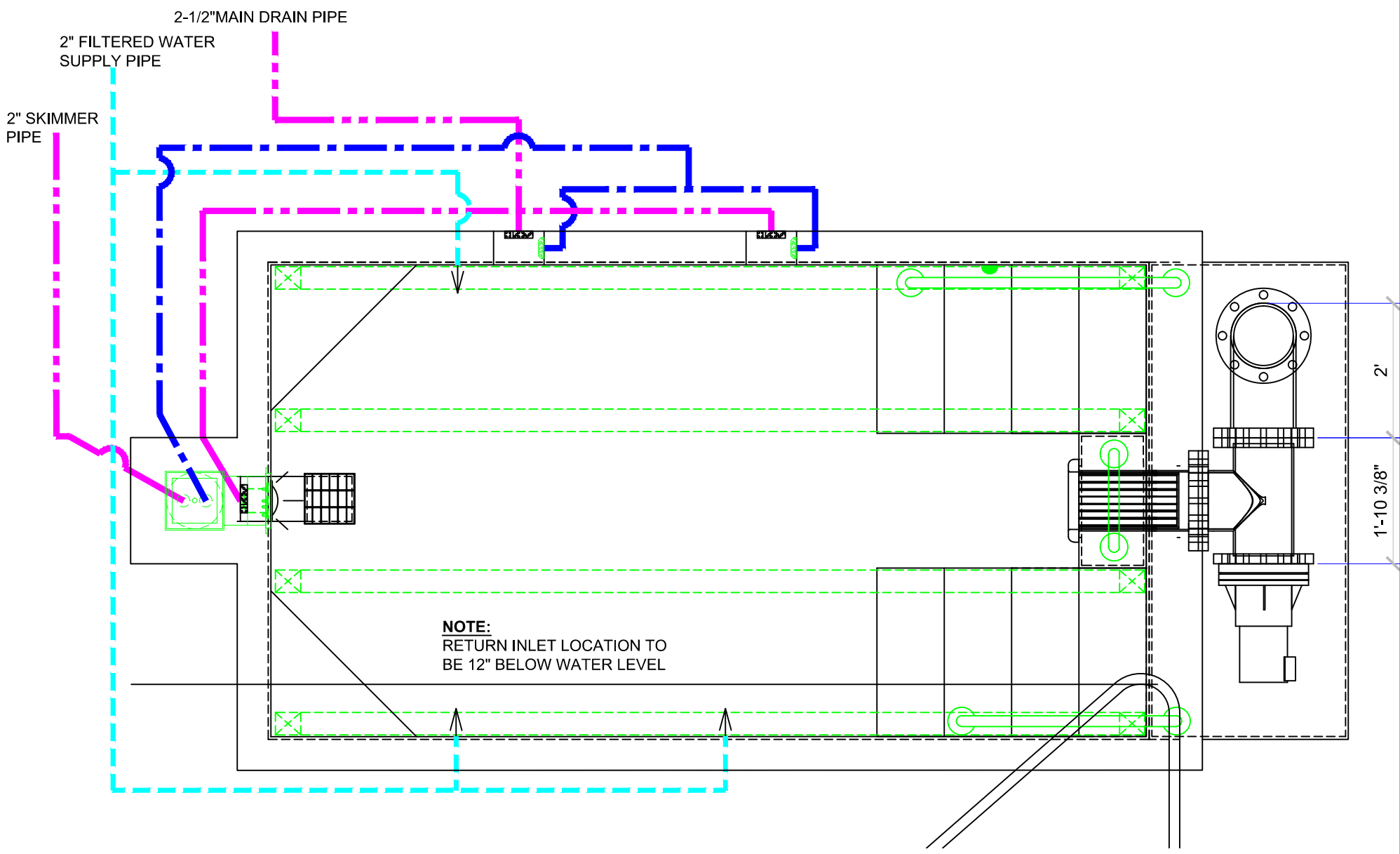
NESPA ENTERPRISES INC.

2800 Richter Ave. Suite C
Oroville, CA 95966
Office: (530) 534-9910 Fax: (530) 534-9915
E-Mail: sales@tiledspas.com
Web Site: www.tiledspas.com

13' LEGACY PLUMBING DETAIL

ALL DIMENSIONS SUBJECT TO 1/4" TOLERANCES

SCALE: 1/2" = 1'-0"
DATE: 3/15/2006
JOB: LEFT BANK
DR#:LFB-LGC- PD05





NESPA ENTERPRISES INC.

2800 Richter Ave. Suite C
 Oroville, CA 95966
 Office: (530) 534-9910 Fax: (530) 534-9915
 E-Mail: sales@tiledspas.com
 Web Site: www.tiledspas.com

13' LEGACY

EQUIPMENT ID

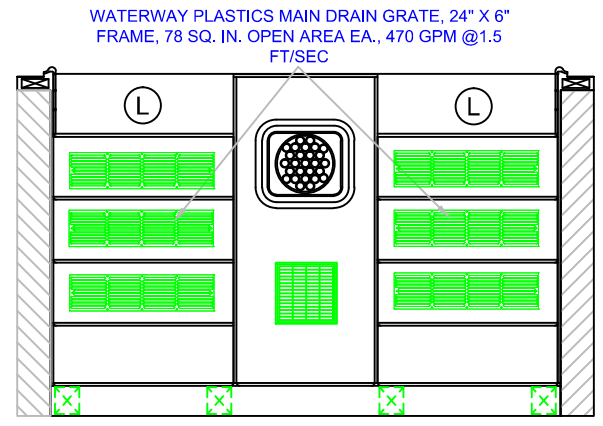
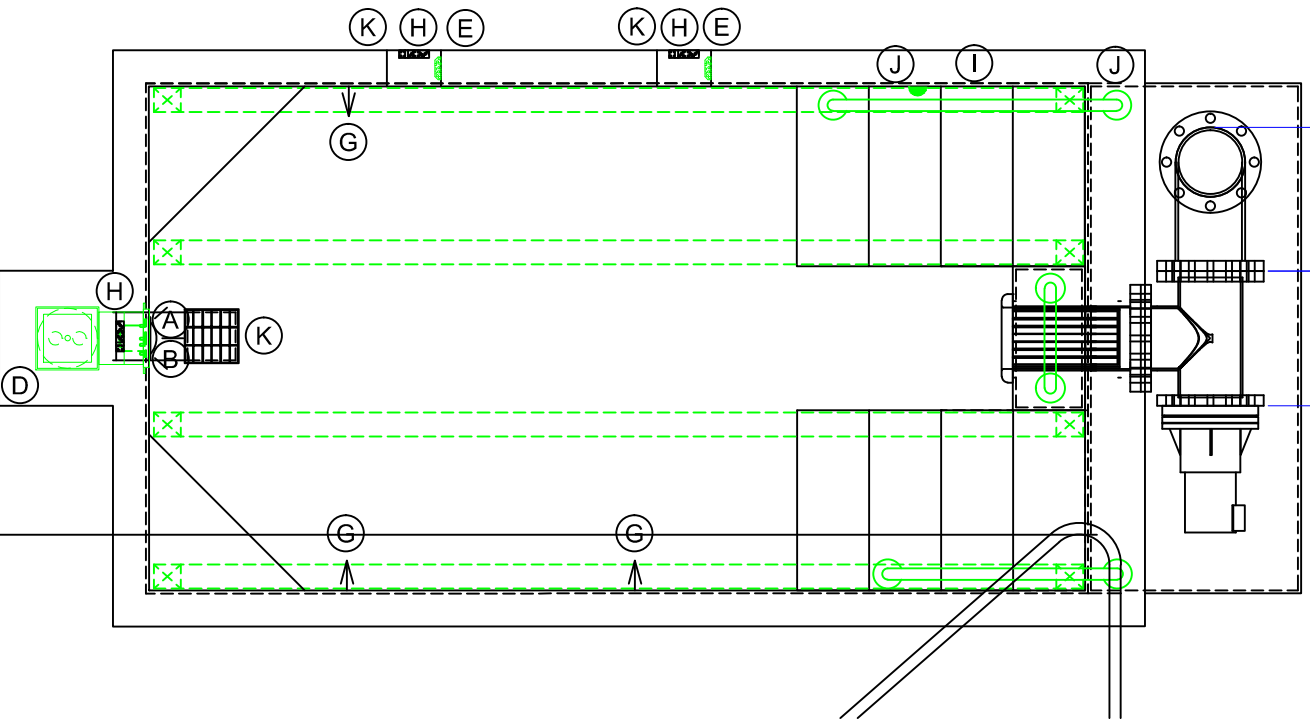
ALL DIMENSIONS SUBJECT TO 1/4" TOLERANCES

SCALE: 3/8" = 1'-0"

DATE: 3/15/2006

JOB: LEFT BANK

DR#:LFB-LGC- PEQ06





NESPA ENTERPRISES INC.
 2800 Richter Ave. Suite C
 Oroville, CA 95966
 Office: (530) 534-9910
 Fax: (530) 534-9915
 E-Mail: sales@tiledspas.com
 Web Site: www.tiledspas.com

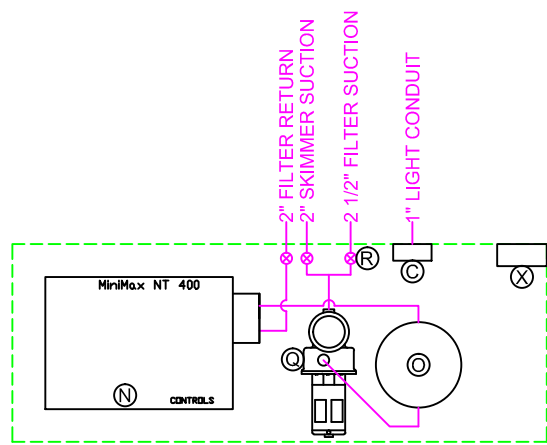
13' LEGACY

EQUIPMENT IDENTIFICATION

ALL DIMENSIONS SUBJECT TO 1/4" TOLERANCES

SCALE: 1/2" = 1'-0"
 DATE: 3/1/2006
 JOB: LEFT BANK
 DR#: LFB-LGC-PEQL04

ITEM	DESCRIPTION	MANUFACTURER	CATALOG NO.	QTY.
A	LIGHT NICHE (FOR UNDERWATER LIGHT) W/ 1" HUB	PENTAIR/PACFAB	782423	1
B	SPA BRIGHT UNDERWATER LIGHT, 120 VOLT, 100 WATT, 50' CORD, U.L. APPROVED	PENTAIR/PACFAB	78108100	1
C	LIGHT J-BOX	PENTAIR/PAC FAB	78310700	1
D	SURFACE SKIMMER W/ EQUALIZER, NSF APPROVED	HAYWARD	SP-1084 FVE	1
E	4" ANTI VORTEX EQUALIZIER 3.61 SQ.IN. OPEN AREA, COMPLIES W/ ANSI CODE A112.19	HYDROAIR	10-6806	2
F	HYDRO INLETS, 1 1/2" WATER, 1 1/2" AIR	HAYWARD	10-5100	8
G	INLET FITTINGS, 1 1/2", WALL TYPE, W/ EYEBALL	HYDRO AIR	10-3500	2
H	5" HIGH FLOW ANTI VORTEX SUCTIONS 8.39 SQ. IN. OPEN AREA 208 GPM AT 1.5 FT/SEC WATER VELOCITY, COMPLIES W/ ANSI CODE A112.19 UL APPROVED	WATERWAY	640-3850	4
I	HAND RAIL, STAINLESS STEEL, 4' 0" LENGTH, W/ .065TUBING WALL THICKNESS	S.R. SMITH	3HR-4-065	2
J	BRONZE ANCHOR SOCKET 4"	S.R. SMITH	AS-100B	2
K	MAIN DRAIN GRATE, 9" X 9" FRAME, 49 SQ. IN. OPEN AREA, 299 GPM @1 1/2 FT/SEC	InterPlastics		4
L	MAIN DRAIN GRATE, 24"x 8-1/2", 110 Sq. In. Open Area 660 GPM @ 1.5 Ft Per Second	RMT	SPLASH	4
N	NATURAL GAS HEATER W/ POWER ASSISTED VENTILATION, 400,000 BTU	PAC FAB	PEN 460531	1
O	CARTRIDGE FILTER 320 SQ. FT. CLEAN & CLEAR PLUS SERIES	PENTAIR/PAC FAB	CCP320	1
P	FILTRATION PUMP AND MOTOR, SELFPRIMING, 60 GPM @ 60 FT. HEAD, 3/4 HP, 230 VOLT 1-PHASE, 2" SUCTION, 2" DISCHARGE, UNIT WITH PUMP STRAINER	PENTAIR	WFE-3	1
R	BALL VALVE, 2" SLIP X SLIP	SPEARS	2612-020	7
S	VACUUM GAUGE, 0" TO 30", 2-1/2" DIA.	ASHCROFT	GB20PA02LKVAC	1
T	PRESSURE GAUGE, 0 TO 60 PSI, 2-1/2 DIA.	AHSCROFT	B20PA02RK60	2
U	FLOW METER, 2" 20 TO 125 GPM SCALE	BLUE WHITE	F30200P	1
V	CHEMICAL FEEDER	RAINBOW	320	1
X	CONTROLS SYSTEM, POWER CENTER W/ CIRCUIT BREAKER, DUAL TIME CLOCKS, REMOTE EMERGENCY SHUT OFF SWITCH AND JET ACTIVATION BUTTON (LOCATED ADJACENT TO SPA)	COMPOOL	LX802L	1



These drawings, concepts, and details contained herein are the original proprietary designs of NESPA ENTERPRISES, developed over many years of experience in the pool and spa industry and as such are protected by the copyright laws of the United States Government. Reproduction of any of the above without written permission to do so by NESPA ENTERPRISES, is illegal.



NESPA ENTERPRISES INC.

2800 Richter Ave. Suite C
 Oroville, CA 95966
 Office: (530) 534-9910 Fax: (530) 534-9915
 E-Mail: sales@tiledspas.com
 Web Site: www.tiledspas.com

Elite Model 20.4 Amps @ 230 VAC GFI/Motor Thermal Overload
Motor Leeson UL File # E57955 Line Reactor Over Current Over
ABB Drive UL File # E124534 Voltage Under Current Under Voltage

Low Voltage DC Control Current

Hydraulics

Total Suction Grate Open Area = 512 Sq. In.
 Maximum Suction Velocity = 1.41 Ft. per Sec.
 Maximum Flow Rate = 2150 GPM
 System PSI = Less Than 3 PSI
 Total Dynamic Head = 4.8 Ft

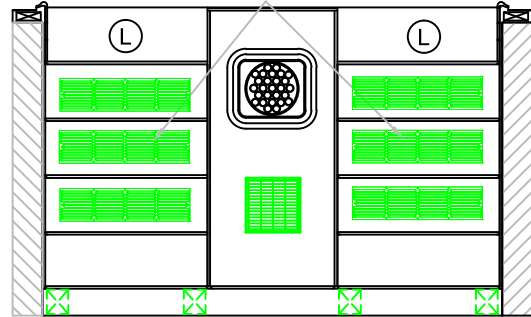
Riverflow Pump

Axial Flow (propeller) 10"
 Maximum System Pressure Typical 2.5 PSI Competition Model
 Maximum System Pressure Typical 1.5 PSI Elite
Suction
 Flooded non self priming flooded suction /NPSHR > 1 foot Supply Pipe Velocity < 8 f/s
Safety
 Supply Safety Grate ANSI Compliant (A112.19.8M /424.2.6.6.2 # 2)
 Safety Grate dimensions /756 sq in. (Max Opening .375x .375)
 Velocity through grate @ 3000 gpm < 1.5 ft/s

Hair Entanglement/Entrapment (as noted by IAMPO SPS 1-83,CPSC, NSPF,NSPI)
 Tested at < 1lb pull per ansi
 Wig Flotation Per ANSI < than 5 seconds
 Full Body Obstruction no measurable attraction

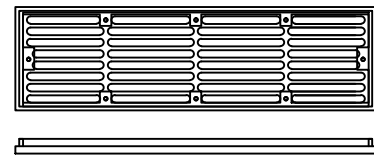
Safety Compliant ANSI A112.19.8M
 ANSI Exception 424.2.6.2
Hair Entrapment < 1 LB Pull

WATERWAY PLASTICS MAIN DRAIN GRATE, 24" X 6"
 FRAME, 78 SQ. IN. OPEN AREA EA., 470 GPM @1.5
 FT/SEC



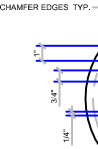
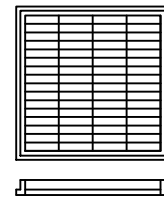
UL LISTED

WATERWAY PLASTICS Part No 642-4727
 ANSI/ASME A112.198M MAIN DRAIN GRATE, 24" X 6" FRAME, 78 SQ. IN.
 OPEN AREA EA., 470 GPM @1.5 FT/SEC



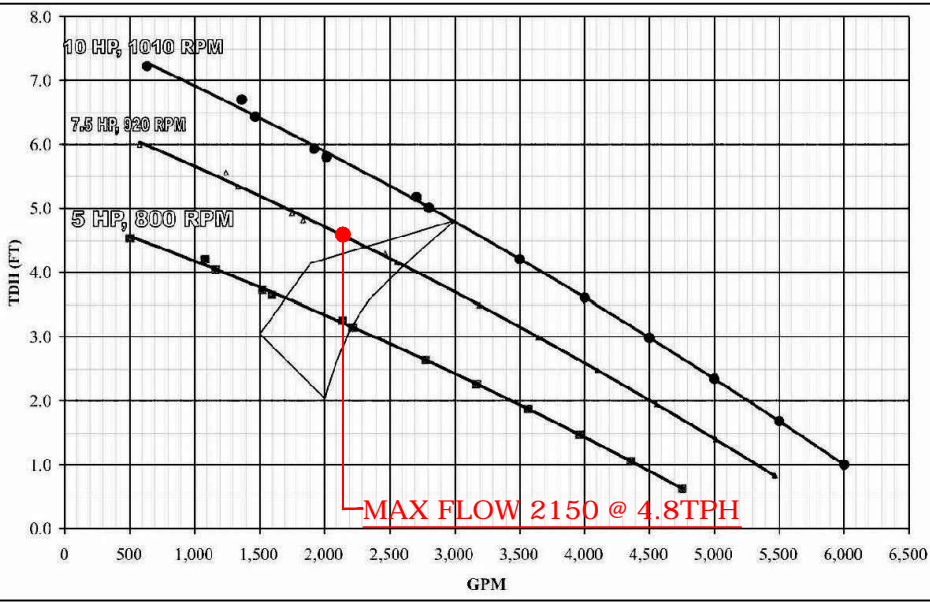
UL LISTED

WATERWAY PLASTICS Part No 642-4700
 ANSI/ASME A112.198M
 MAIN DRAIN GRATE, 9" X 9" FRAME,
 44 SQ. IN. OPEN AREA EA., 265 GPM @1.5 FT/SEC

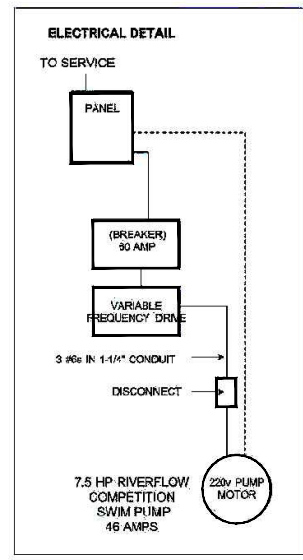


Pump Curves

Typical System Performance



ELECTRICAL TYPICAL





NESPA ENTERPRISES INC.

2800 Richter Ave. Suite C
Oroville, CA 95966
Office: (530) 534-9910
Fax: (530) 534-9915
E-Mail: sales@tiledspas.com
Web Site: www.tiledspas.com

13' LEGACY

POOL RENDER

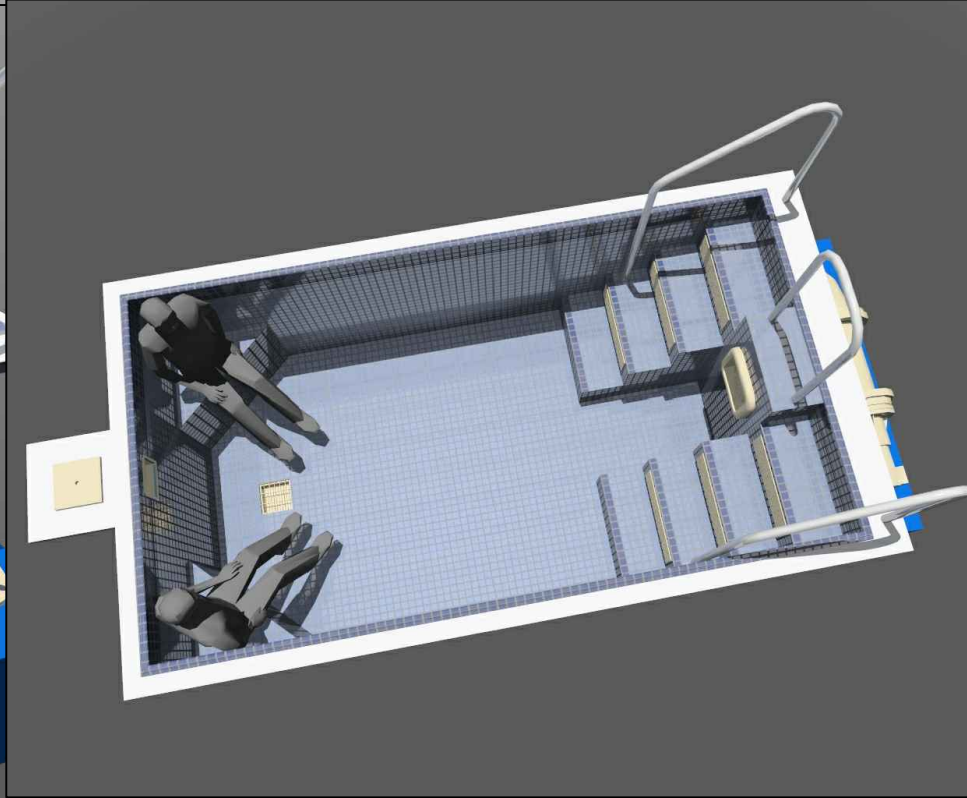
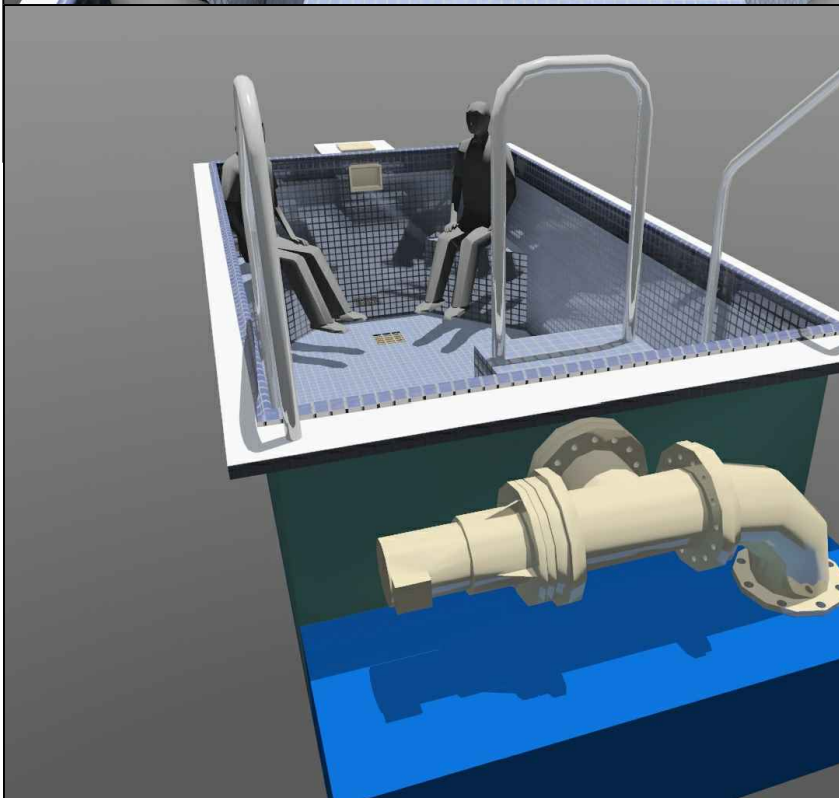
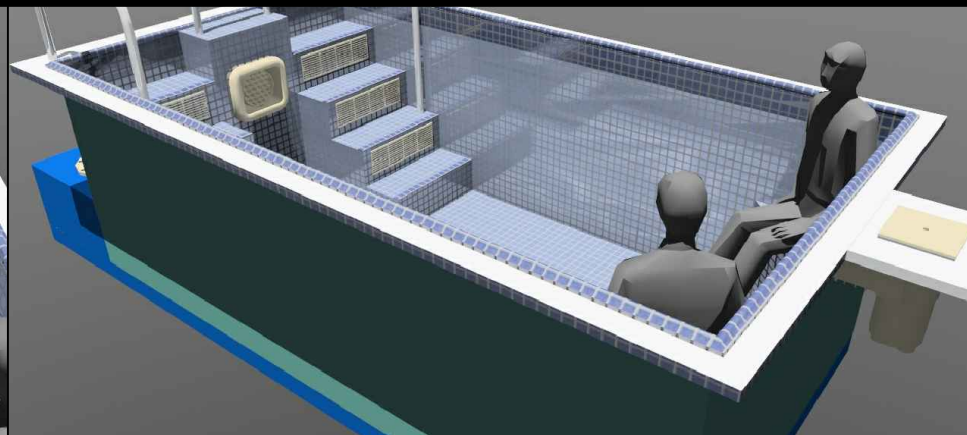
SCALE: N/A

DATE: 3/14/2006

JOB: LEFT BANK

DR#: Pool Render

ALL DIMENSIONS SUBJECT TO 1/4" TOLERANCES



These drawings, concepts, and details contained herein are the original proprietary designs of NESPA ENTERPRISES, developed over many years of experience in the pool and spa industry and as such are protected by the copyright laws of the United States Government. Reproduction of any of the above without written permission to do so by NESPA ENTERPRISES, is illegal.



NESPA ENTERPRISES INC.
 2800 Richter Ave. Suite C
 Oroville, CA 95966
 Office: (530) 534-9910
 Fax: (530) 534-9915
 E-Mail: sales@tiledspas.com
 Web Site: www.tiledspas.com

CUSTOM IMPERIA

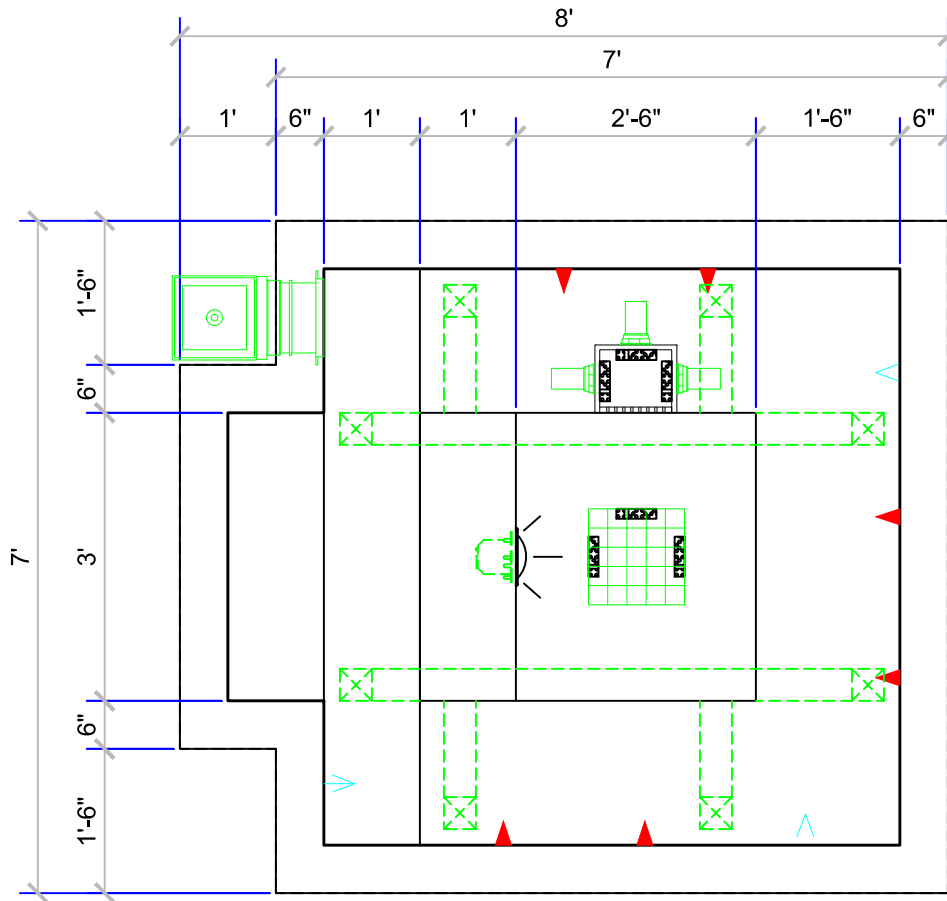
SPA DETAIL

ALL DIMENSIONS SUBJECT TO 1/4" TOLERANCES

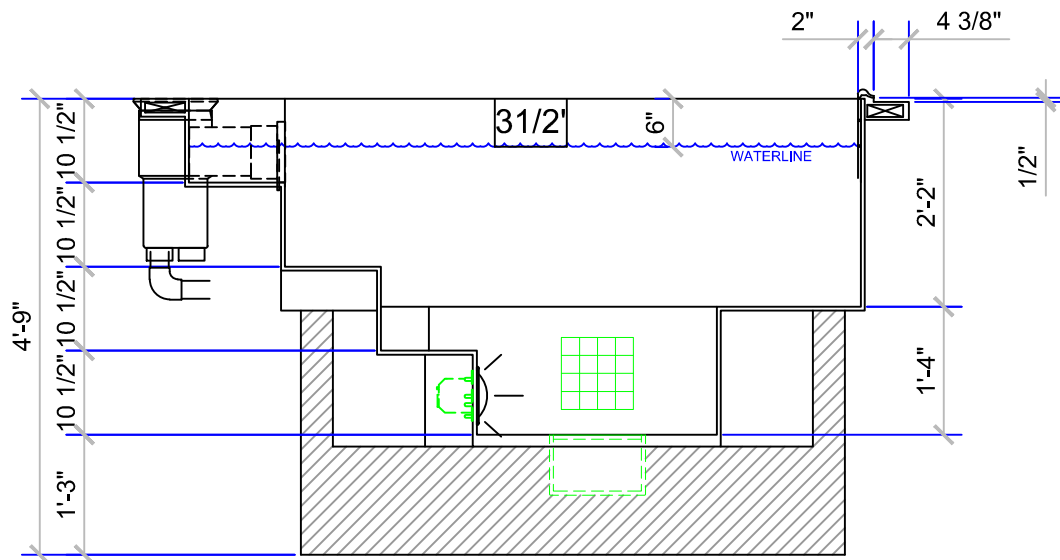
SCALE: 1/2" = 1'-0"
 DATE: 03/16/06
 JOB: LEFT BANK
 DR#: LFB-LGC-SD03

SKID SUPPORT STRUCTURE
MAIN DRAIN
9" X 9"
LIGHT NICH
HAYWARD SKIMMER NSF APPROVED

SPECIFICATIONS
DRY WEIGHT: 2000 lbs.
WET WEIGHT: 7852 lbs.
WATER: 705 GALLONS
SURFACE AREA: 39 sq.ft.
IAPMO#: 1138
FDA#: 2030305
SPECS BASED ON FULL TUB



RETURNS - 8"-16" FROM \curvearrowright OF SKIMMER





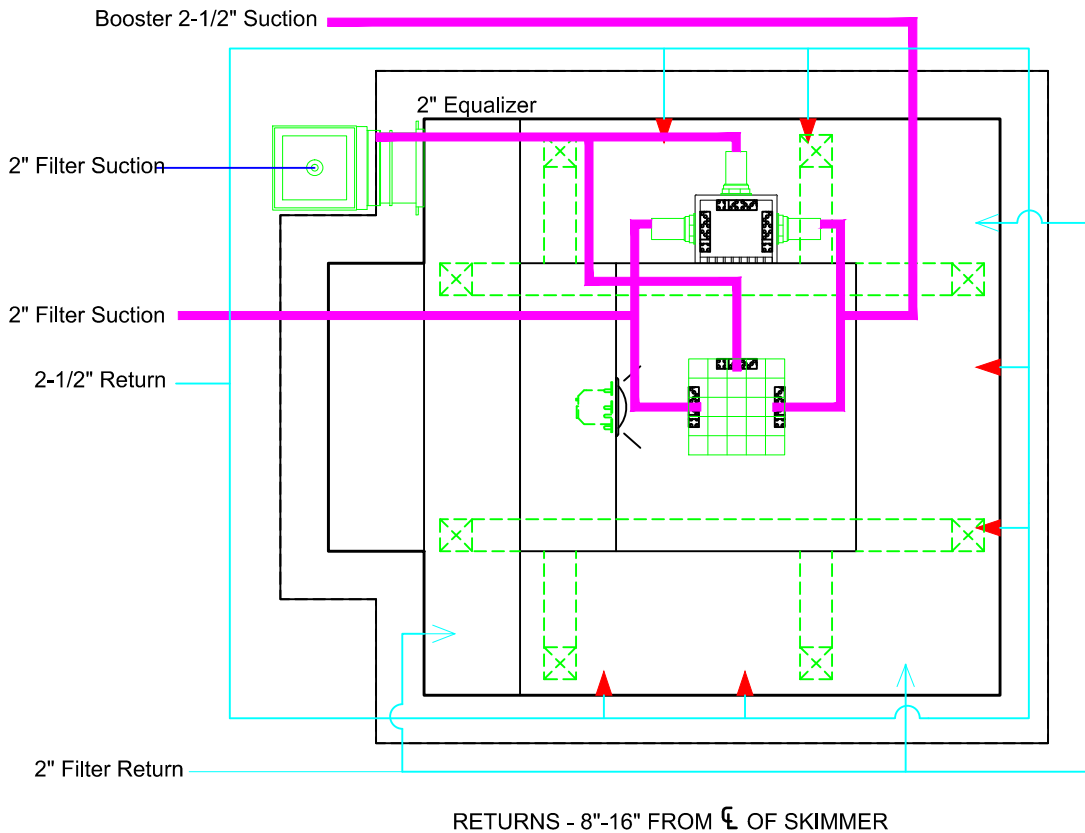
NESPA ENTERPRISES INC.
2800 Richter Ave. Suite C
Oroville, CA 95966
Office: (530) 534-9910
Fax: (530) 534-9915
E-Mail: sales@tiledspas.com
Web Site: www.tiledspas.com

CUSTOM IMPERIA

SPA PLUMBING

ALL DIMENSIONS SUBJECT TO 1/4" TOLERANCES

SCALE: 1/2" = 1'-0"
DATE: 12/09/05
JOB: LEFT BANK
DR#: LFB-LGC-SPD03





NESPA ENTERPRISES INC.
 2800 Richter Ave. Suite C
 Oroville, CA 95966
 Office: (530) 534-9910
 Fax: (530) 534-9915
 E-Mail: sales@tiledspas.com
 Web Site: www.tiledspas.com

CUSTOM IMPERIA

TILE SELECTION DETAIL

SCALE: N/A
 DATE: 02/22/06
 JOB: LEFT BANK
 DR#: LFB-LGC-TSD03

ALL DIMENSIONS SUBJECT TO 1/4" TOLERANCES

MATERIALS:

DAL TILE, KEYSTONE SERIES, 2X2 NONGLAZED MOSAIC. TILE TO BE SLIP RESISTANT.

LOCATIONS:

1. SELECT DAL 2x2 TILE FOR GENERAL FIELD TILE. USUALLY LIGHT IN COLOR.
2. SELECT DAL TILE FOR WATERLINE (TOP 6" OF VERTICAL WALL BELOW LIP). TILE CAN BE SAME AS STEP & BENCH EDGES, FIELD AND OR OTHER.
3. SELECT, DARKER THAN FIELD, DAL 2x2 TILE FOR STEP & BENCH EDGES.
4. SELECT TILE FOR HORIZONTAL LIP EDGE (NOTE:IF C701 COPING TILE IS REQUESTED (Special Order) A 6-8 WEEK LEAD TIME WILL BE REQUIRED).

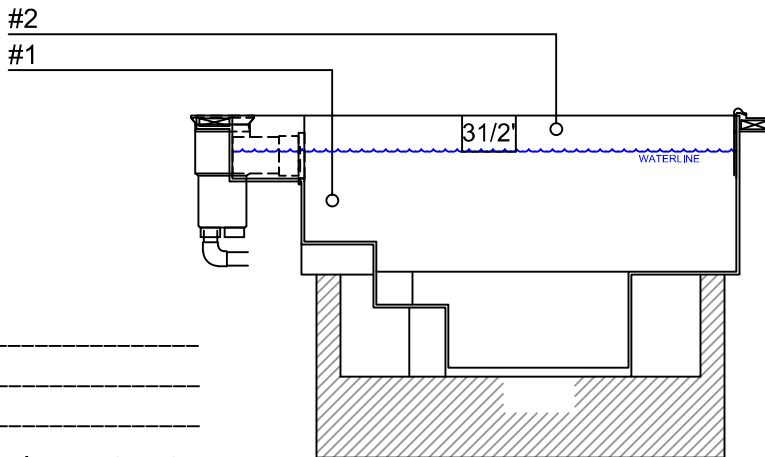
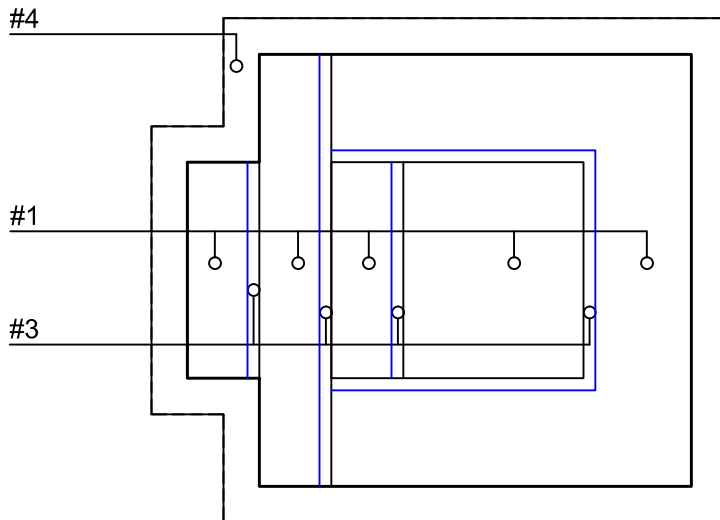
HOW TO SELECT TILE FOR YOUR SPA

- 1) CHOOSE THE MANUFACTURER:
 -Dal Tile or American Olean
- 2) CHOOSE THE SIZE:
 -Tile size's 2"x2" or 1"x1" are standard commercially approved tile. Tile must be non-glazed and slip-resistant. We recommend Dal's Keystones Mosaic Unglazed series.
 -All spas that are round or have radius design shall have 2" X 2" or 1" X 1" tile only

3) CHOOSE THE LAYOUT:
 When selecting tile for your Nespa spa you can select one color or several. This diagram reflects suggested area's to tile. Availability of tile can vary or be limited. Fill in the blanks with the type of tile you would like in the corresponding areas of your spa. Fax this and all other spa information to us at (530)534-9915 when you are finished choosing your spa.

4) NOTE:
 The quoted spa price includes a \$5.00 per sq. ft. tile cost allowance. If the tile cost exceeds this allowance than the customer is required to pay the difference.

Our manufacturing process requires the use of tile before production of the spa begins. For this reason we strongly suggest that you check with Nespa as to tile availability and possible shipping delays. Lead time starts with the order of tile.



- #1 - FIELD TILE: D178 Bombay
- #2 - WATERLINE (optional): D023 Cobalt Blue
- #3 - BENCH & STEP EDGES (optional): D023 Cobalt Blue
- #4 - TILED LIP (optional): CT-1 12"x12" Tiles (as shown in contract documents). Install in field.



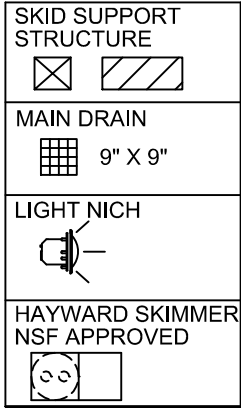
NESPA ENTERPRISES INC.
 2800 Richter Ave. Suite C
 Oroville, CA 95966
 Office: (530) 534-9910
 Fax: (530) 534-9915
 E-Mail: sales@tiledspas.com
 Web Site: www.tiledspas.com

CUSTOM IMPERIA

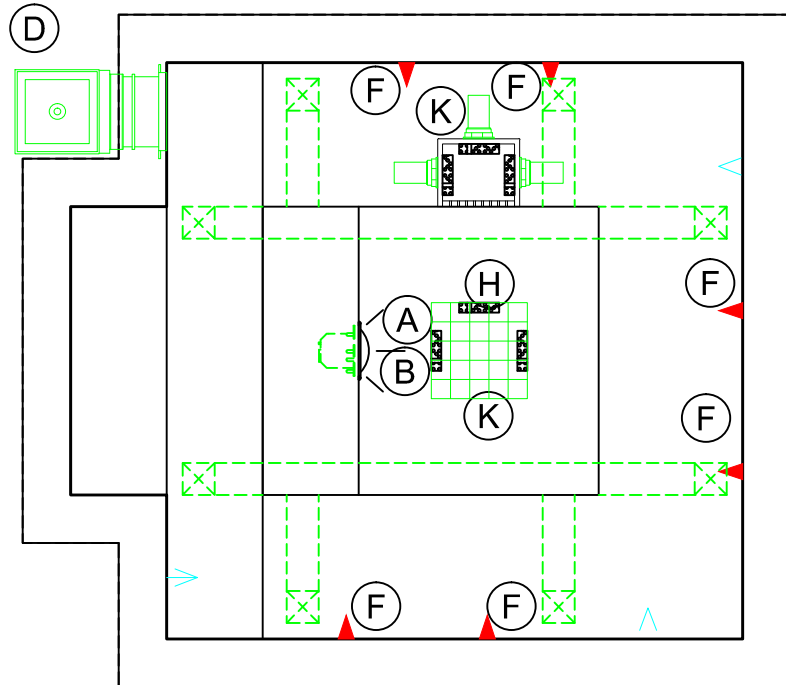
EQUIPMENT IDENTIFICATION

ALL DIMENSIONS SUBJECT TO 1/4" TOLERANCES

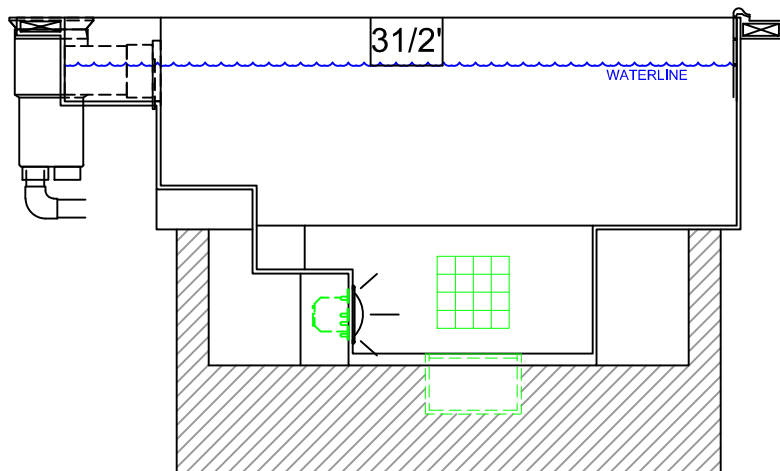
SCALE: 1/2" = 1'-0"
 DATE: 12/09/05
 JOB: LEFT BANK
 DR#: LFB-LGC-SEQ03



SPECIFICATIONS
 DRY WEIGHT: 2000 lbs.
 WET WEIGHT: 7852 lbs.
 WATER: 705 GALLONS
 SURFACE AREA: 39 sq.ft.
 IAPMO#: 1138
 FDA#: 2030305
 SPECS BASED ON FULL TUB



RETURNS - 8"-16" FROM C OF SKIMMER





NESPA ENTERPRISES INC.
 2800 Richter Ave. Suite C
 Oroville, CA 95966
 Office: (530) 534-9910
 Fax: (530) 534-9915
 E-Mail: sales@tiledspas.com
 Web Site: www.tiledspas.com

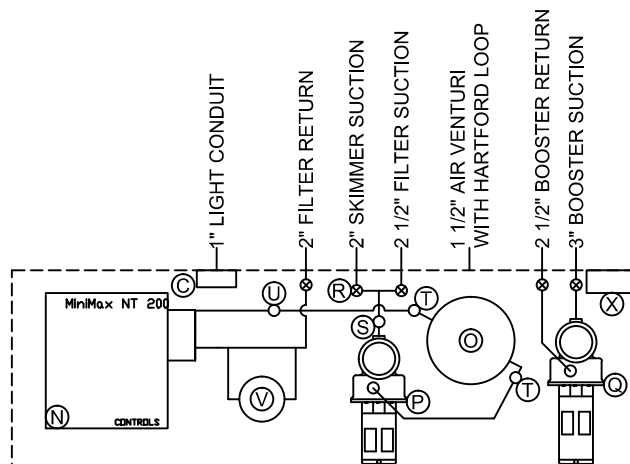
CUSTOM IMPERIA

EQUIPMENT IDENTIFICATION

ALL DIMENSIONS SUBJECT TO 1/4" TOLERANCES

SCALE: 1/2" = 1'-0"
 DATE: 12/09/05
 JOB: LEFT BANK
 DR#:LFB-LGC- SEQLO3

ITEM	DESCRIPTION	MANUFACTURER	CATALOG NO.	QTY.
A	LIGHT NICHE (FOR UNDERWATER LIGHT) W/ 1" HUB	PENTAIR/PACFAB	782423	1
B	SPA BRIGHT UNDERWATER LIGHT, 120 VOLT, 100 WATT, 50' CORD, U.L. APPROVED	PENTAIR/PACFAB	78108100	1
C	LIGHT J-BOX	PENTAIR/PAC FAB	78310700	1
D	SURFACE SKIMMER W/ EQUALIZER, NSF APPROVED	HAYWARD	SP-1084 FVE	1
E	4" ANTI VORTEX EQUALIZIER 3.61 SQ.IN. OPEN AREA, COMPLIES W/ ANSI CODE A112.19	HYDROAIR	10-6806	2
F	HYDRO INLETS, 1 1/2" WATER, 1 1/2" AIR	HAYWARD	10-5100	8
G	INLET FITTINGS, 1 1/2", WALL TYPE, W/ EYEBALL	HYDRO AIR	10-3500	2
H	5" HIGH FLOW ANTI VORTEX SUCTIONS 8.39 SQ. IN. OPEN AREA 208 GPM AT 1.5 FT/SEC WATER VELOCITY, COMPLIES W/ ANSI CODE A112.19 UL APPROVED	WATERWAY	640-3850	4
I	HAND RAIL, STAINLESS STEAL, 4' 0" LENGTH, W/ .065TUBING WALL THICKNESS	S.R. SMITH	3HR-4-065	2
J	BRONZE ANCHOR SOCKET 4"	S.R. SMITH	AS-100B	2
K	MAIN DRAIN GRATE, 9" X 9" FRAME, 49 SQ. IN. OPEN AREA, 299 GPM @1 1/2 FT/SEC	PAC FAB	54-2019	2
O	CARTRIDGE FILTER 150 SQ. FT. CLEAN & CLEAR PLUS SERIES	PENTAIR/PAC FAB	CCP150	1
N	NATURAL GAS HEATER W/ POWER ASSISTED VENTILATION, 250,000 BTU	PAC FAB	PEN 460533	1
P	SELFPRIMING PUMP AND MOTOR, 40 GPM @ 60 FT. HEAD, 1/2 HP, 230 VOLT, 20 AMP 1 PHASE, 2" DISCHARGE UNIT WITH PUMP STRAINER	PENTAIR	WFE-2	1
Q	SELFPRIMING PUMP AND MOTOR, 99 GPM @ 60 FT. HEAD, 1 1/2 HP, 230 VOLT, 20 AMP 1 PHASE, 2" DISCHARGE UNIT WITH PUMP STRAINER	PENTAIR	WFE-6	1
R	BALL VALVE, 2" SLIP X SLIP	SPEARS	2612-020	7
S	VACUUM GAUGE, 0" TO 30", 2-1/2" DIA.	ASHCROFT	GB20PA02LKVAC	1
T	PRESSURE GAUGE, 0 TO 60 PSI, 2-1/2 DIA.	AHSCROFT	B20PA02RK60	2
U	FLOW METER, 2" 20 TO 125 GPM SCALE	BLUE WHITE	F30200P	1
V	CHEMICAL FEEDER	RAINBOW	320	1
X	CONTROLS SYSTEM, POWER CENTER W/ CIRCUIT BREAKER, DUAL TIME CLOCKS, REMOTE EMERGENCY SHUT OFF SWITCH AND JET ACTIVATION BUTTON (LOCATED ADJACENT TO SPA)	COMPOOL	LX802L	1



These drawings, concepts, and details contained herein are the original proprietary designs of NESPA ENTERPRISES, developed over many years of experience in the pool and spa industry and as such are protected by the copyright laws of the United States Government. Reproduction of any of the above without written permission to do so by NESPA ENTERPRISES, is illegal.



NESPA ENTERPRISES INC.
2800 Richter Ave. Suite C
Oroville, CA 95966
Office: (530) 534-9910
Fax: (530) 534-9915
E-Mail: sales@tiledspas.com
Web Site: www.tiledspas.com

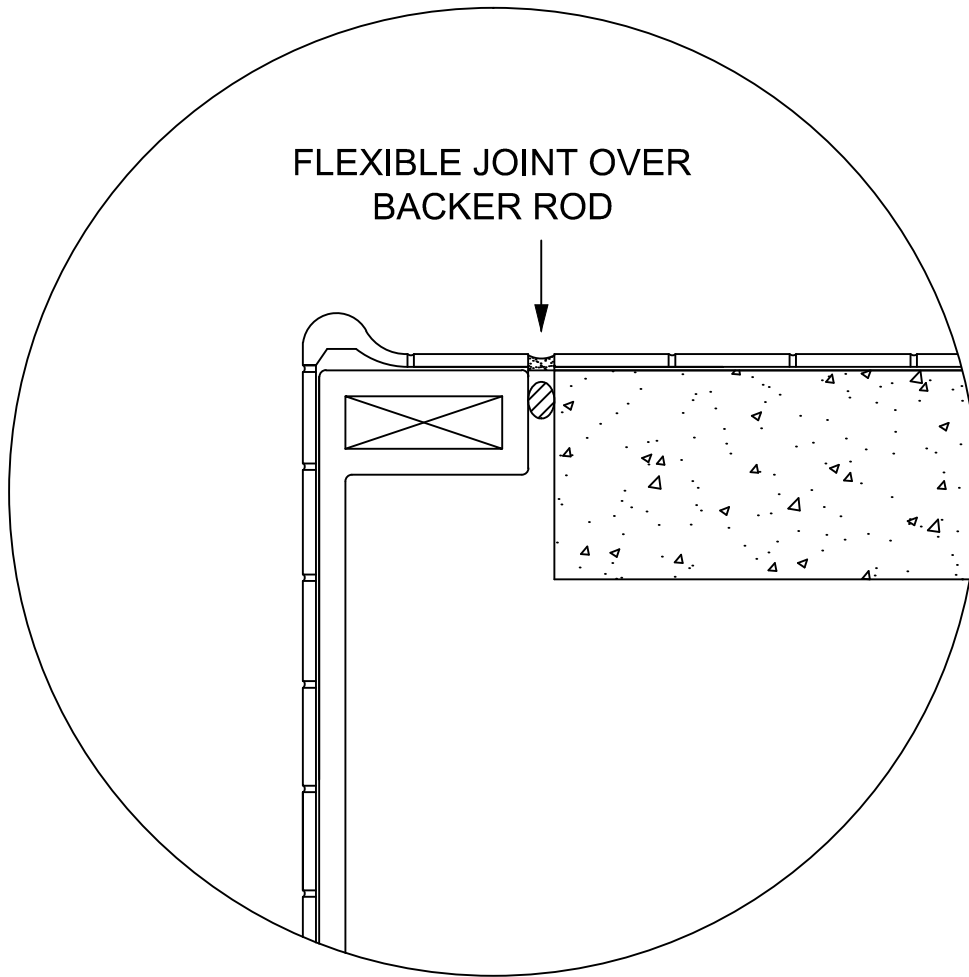
NESPA STANDARD

SPA LIP DETAIL

ALL DIMENSIONS SUBJECT TO 1/4" TOLERANCES

SCALE: N/A
DATE: 12/09/05
JOB: LEFT BANK
DR#: LFB-LGC-SLD02

#1



American Olean C701 coping tile
for commercial application

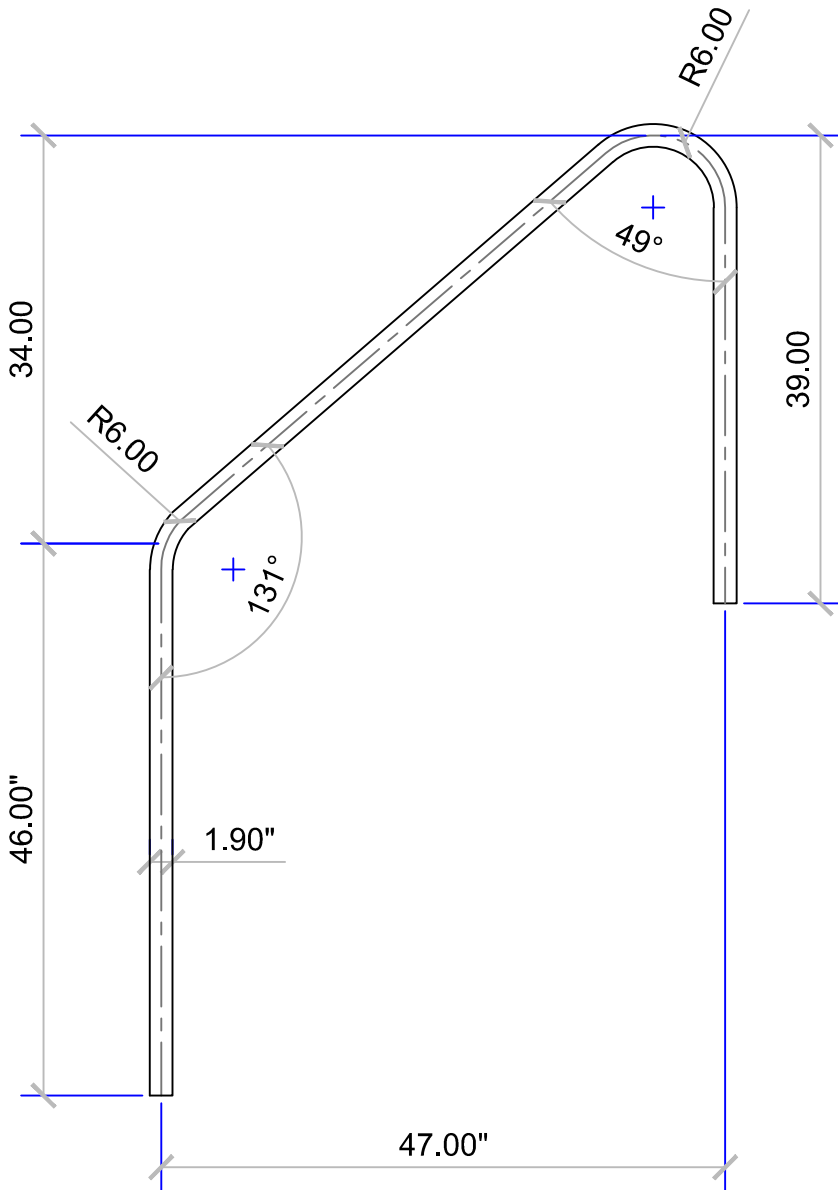


NESPA ENTERPRISES INC.
2800 Richter Ave. Suite C
Oroville, CA 95966
Office: (530) 534-9910
Fax: (530) 534-9915
E-Mail: sales@tiledspas.com
Web Site: www.tiledspas.com

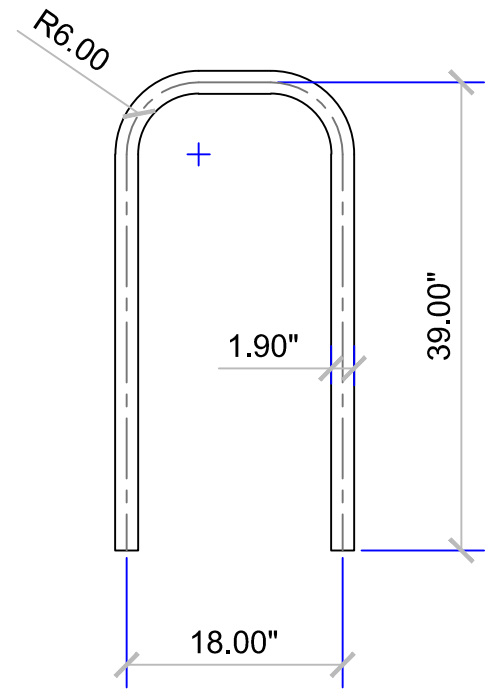
SWIM SPA HANDRAIL DETAIL

ALL DIMENSIONS SUBJECT TO 1/4" TOLERANCES

SCALE: 3/4" = 1'
DATE: 10/02/06
JOB: LEFT BANK
DR#: HANDRAILS



4' HANDRAIL (2)



18" RAIL (1)