



NESPA
TILED SPAS

Production Booklet

for

FLETCHER SPA

2800 Richter Ave. Suite C, Oroville, CA 95965 • **voice:** (530)534-9910
fax: (530)534-9915 • **email:** sales@tiledspas.com • **website:** www.tiledspas.com



RECOMMENDED MAINTENANCE

Please Note:

These are only recommended guidelines to care for a Nespa all tiled spa. Local codes may require additional procedures, therefore consult with a pool professional that is LA county Health Department certified for more information on local codes and requirements.

SPA SURFACE

Your spa tile is acid resistant and frost-proof. The Tile does not absorb germs or algae. Tile does not stain and is very easy to clean. Color does not fade or lose its luster. All grouts are epoxy based and are extremely durable. To remove scum line use soft nylon brush and small amounts of biodegradable soaps. Do not use abrasive brushes or chemicals.

MAINTENANCE

A. CHEMICALS:

- 1) It is important to maintain a chlorine residual of 2 PPM in the spa. That residual can be provided by chlorine or bromine.
- 2) It is recommended to use Bromine or dichlor (granular) forms of chlorine. If bromine Tabs are used we suggest floating or inline dispenser.
- 3) Never use acid to lower Ph in the tile spa.
- 4) Never use trichlor chlorine (1" or 3") tablets in the Nespa spas.
- 5) Never place tablets in skimmer basket.

B. DRAINING THE SPA:

- 1) It is recommended to drain the spa at least once every 2 months depending on bath load and water clarity.
- 2) The spa should be drained through valve exiting re-circulation pump in the spa equipment room or sump pump.
- 3) Note: Use caution to drain spa in the winter months or rainy season when water table is at its highest. It is possible for the spa to float due to hydraulic pressure from surrounding water table. We advise that you consult with your local spa specialist prior to draining the spa.

C. SPA EQUIPMENT:

- 1) Clean filter cartridge at least once every month, or when needed; i.e., if water clarity does not improve after several days.
- 2) Keep area free and clear from leaves and debris build-up.
- 3) Keep area free and clear from flooding.

D. SPA LIGHT:

- 1) Spa light has to be on GFCI circuit. It is controlled at spa side with ON/OFF.

E. TILE SERVICING:

- 1) Contact manufacture when servicing tile or grout. @ (530) 534-9910

PLAN APPROVAL DOCUMENTATION

DRAWING REVISION HISTORY

SHEET 1 - SD (Spa Detail)

REV NOTE: 11-13 Revised Spa Design

REV NOTE: 12-29 Changed Spa Size for Tile

REV NOTE: 12-30 Revised lip and skids

SHEET 2 - EQ Layout

REV NOTE: 01-15 Added Plumbing and EQ Details

SHEET 3 - Tile

REV NOTE:

SHEET 4 - Render

REV NOTE:

SHEET 5 - Cover

REV NOTE:

SHEET 6 - EQ Brochures

REV NOTE:

I approve the above drawings _____ Date: _____

Any changes to these plans from here forward shall be directed in writing to Nespa.

SPA FABRICATION AUTHORIZATION

Nespa's engineering and structural manufacturing departments may find it necessary to make slight adjustments (= 1") to your spa.

This may include the size of the spa (OD/ID), tile cuts, depths, jet location, bench steps etc. These adjustments must be made in the primary stages of building the spa. The adjustments are generally made to ad structural and aesthetic integrity to the vessel. IE: balance of supporting gussets (exterior) and less tile cuts/ symmetrical cuts, grout lines, etc. (interior)

Please initial next to the following number that describes your project needs.

- _____ 1. YES, I understand adjustments need to be made. Nespa will use their expertise to make these adjustments as needed. I give them the authority to make changes. I will receive final accurate drawings prior to receipt of spa or spa hole construction (if changes were made to the size)
- _____ 2. NO, No changes can be made even under 1". Dimensions are fixed. More tile cuts may be needed, Structural supports may be altered to accommodate.
- _____ 3. Nespa will need to contact us for any changes to spa dimensions prior to continued spa fabrication.

NESPA ENTERPRISES INC.

2800 Richter Ave. Suite C Oroville, CA 95966

Office: (530) 534-9910

Fax: (530) 534-9915

E-Mail: sales@tiledspas.com Web Site: www.tiledspas.com



DWG NAME

FLETCHER

DWG TYPE

REV

SCALE

N/A

DATE

1/15/2009

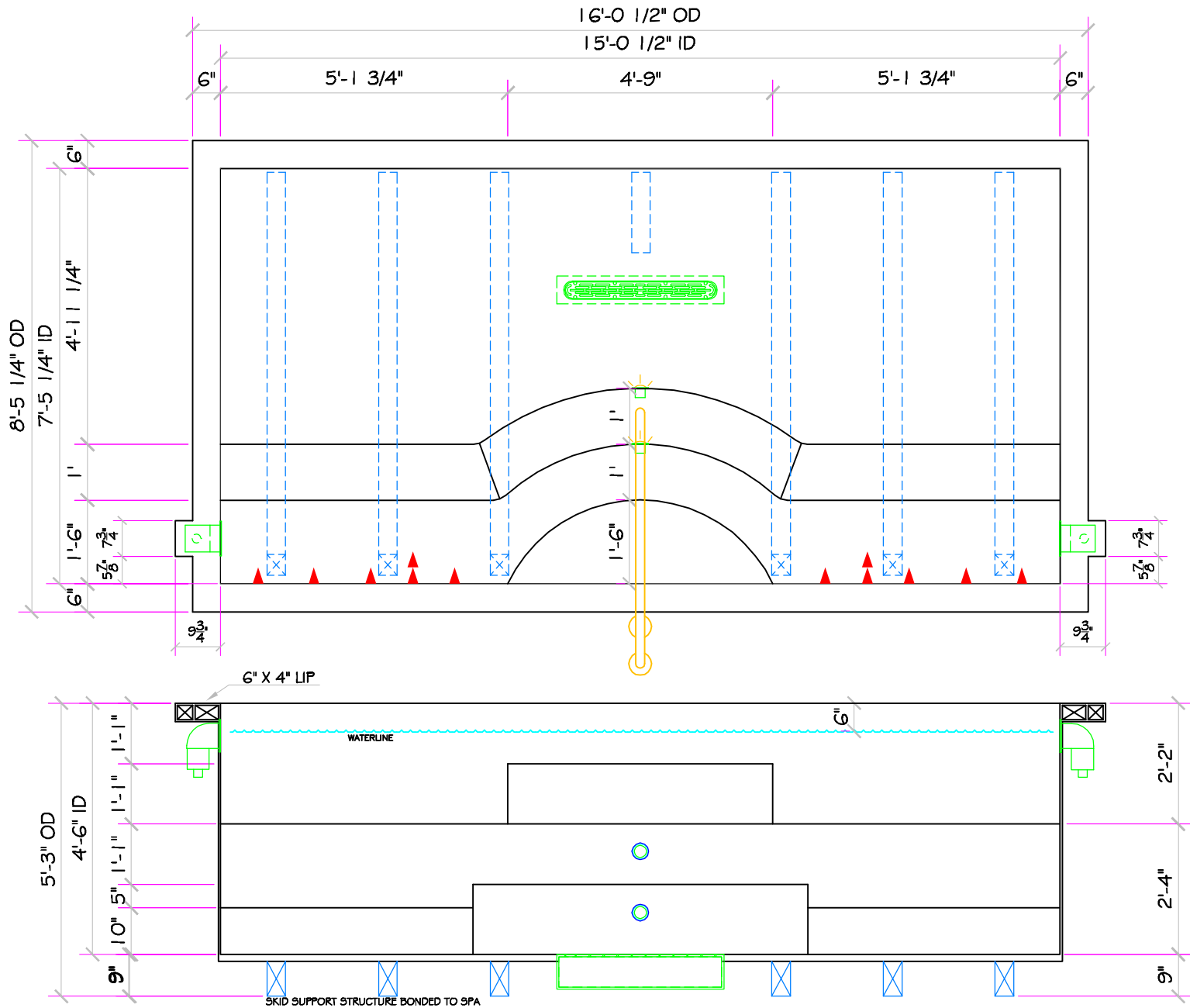
SHEET

Revision History

These drawings, concepts, and details contained herein are the original proprietary designs of NESPA ENTERPRISES, developed over many years of experience in the pool and spa industry and as such are protected by the copyright laws of the United States Government. Reproduction of any of the above without written permission to do so by NESPA ENTERPRISES, is illegal.

| SPECIFICATIONS | |
|----------------|---------------|
| DRY WEIGHT: | 3500 LBS. |
| TOTAL WEIGHT: | 30003 LBS. |
| WATER: | 3179 GAL. |
| VOLUME: | 425 Cu.Ft. |
| WEIGHT: | 26503 LBS. |
| SURFACE AREA: | 111.9 SQ. FT. |
| IAPMO#: | 1138 |
| FDA#: | 2030305 |

| SKID SUPPORT STRUCTURE* BONDED TO SPA | |
|---------------------------------------|---|
| | *SKIDS SUPPLIED BY NESPA |
| LIGHT NICHE | |
| | LOW VOLTAGE, 12 V, U.L. APPROVED |
| SKIMMER | |
| | FRONT ACCESS SKIMMER, NSF APPROVED |
| MAIN DRAIN | |
| | AQUASTAR, 32" Channel Drain, Approved Max Flow Rate: Floor = 318GPM, Wall = 208GPM Meets Or Exceeds Current ASME/ANSI A112.19.8 2007 National Standards |
| SIDEWALL SUCTION | |
| | 10" HIGH FLOW SAFETY DRAIN 200 GPM AT 8 FT/SEC Water Velocity, Meets Or Exceeds Current ASME/ANSI A112.19.8 2007 National Standards |
| EQUALIZER | |
| | 4" EQUALIZER HydroAIR #10-8704 w/ 10-8706 cover 5.0 SQ. IN. OPEN AREA Max Flow 31 GPM @ 2psi COMPLIES W/ ANSI CODE ASME A112.19.8-07 U.L. APPROVED |
| SUCTION | |
| | 5" HIGH FLOW SUCTIONS WATERWAY #640-3850 8.38 SQ. IN. OPEN AREA 208 GPM AT 1.5 FT/SEC COMPLIES W/ ANSI CODE A112.19 U.L. APPROVED |
| JET | |
| | HYDRO INLETS 1-1/2" WATER - 1-1/2" AIR HYDROAIR #10-8100 COMPLIES W/ ANSI CODE ASME A112.19.8-07 U.L. APPROVED |
| RETURN | |
| | INLET FITTINGS 1-1/2" WALL TYPE W/ EYEBALL HYDROAIR #10-3500 COMPLIES W/ ANSI CODE ASME A112.19.8-07 U.L. APPROVED |
| FILL | |
| | INLET FITTINGS 1-1/2" WALL TYPE W/ EYEBALL HYDROAIR #10-3500 COMPLIES W/ ANSI CODE ASME A112.19.8-07 U.L. APPROVED |



ALL DIMENSIONS SUBJECT TO 1/4" TOLERANCES

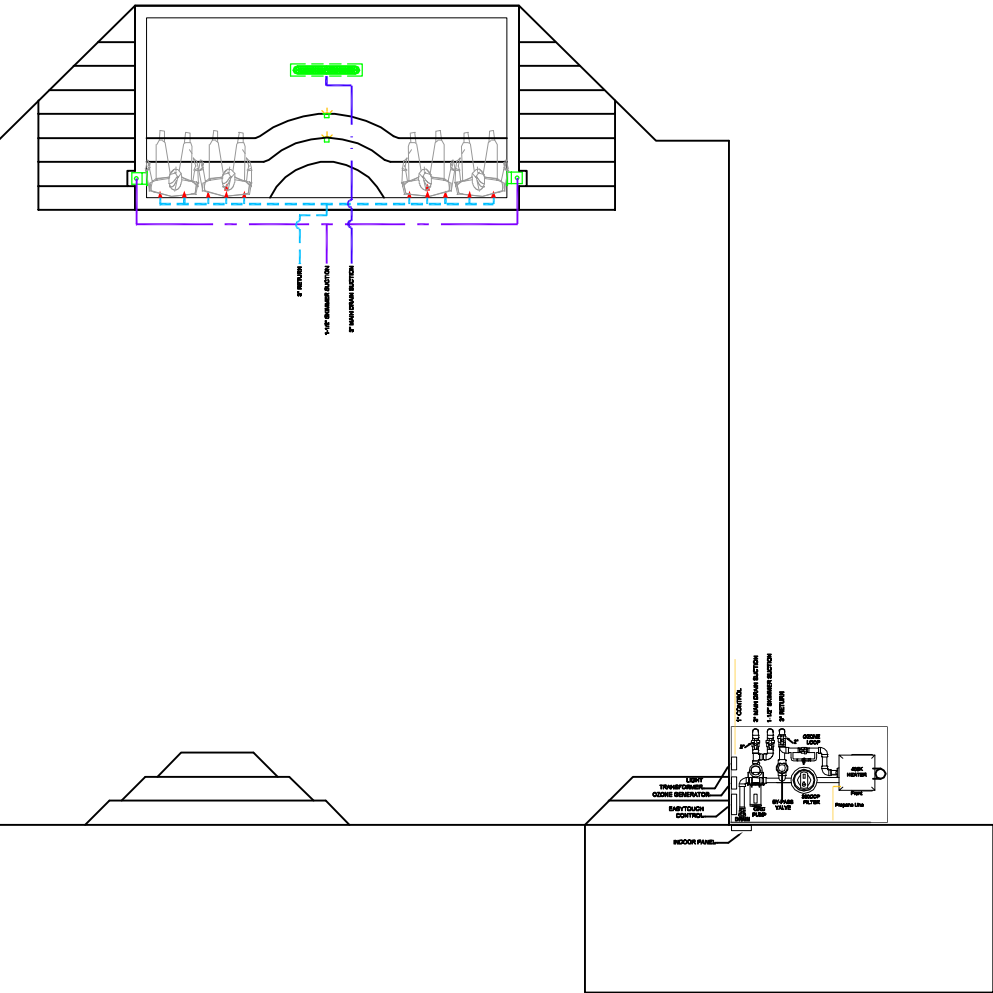
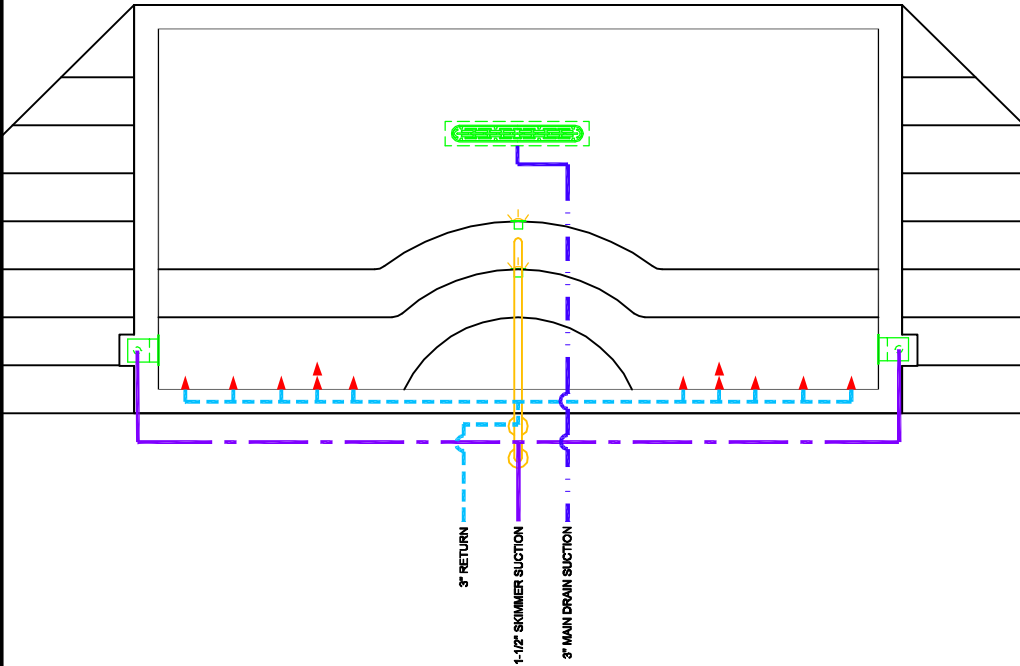
Mar 11, 2009 - 1:11pm

These drawings, concepts, and details contained herein are the original proprietary designs of NESPA ENTERPRISES, developed over many years of experience in the pool and spa industry and as such are protected by the copyright laws of the United States Government. Reproduction of any of the above without written permission to do so by NESPA ENTERPRISES, is illegal.

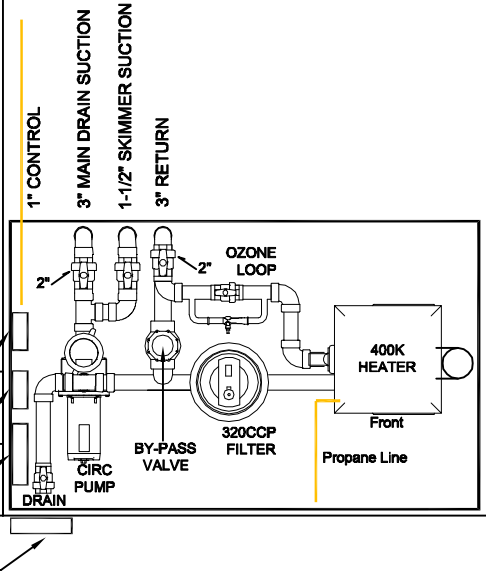
NESPA ENTERPRISES INC.
 2800 Richter Ave. Ste. C Oroville, CA 95966
 Office: (530) 534-9910 Fax: (530) 534-9915
 E-Mail: sales@tiledspas.com Web Site: www.tiledspas.com



| SIZE | DWG NAME | DWG TYPE |
|-----------------|-----------------|-------------------|
| A | FLETCHER | SD7 |
| SCALE 3/8" = 1' | DATE 12/30/2008 | SHEET PAGE 1 OF 6 |



3/8" = 1'



ALL DIMENSIONS SUBJECT TO 1/4" TOLERANCES

Mar 11, 2009 - 1:11pm

These drawings, concepts, and details contained herein are the original proprietary designs of NESPA ENTERPRISES, developed over many years of experience in the pool and spa industry and as such are protected by the copyright laws of the United States Government. Reproduction of any of the above without written permission to do so by NESPA ENTERPRISES, is illegal.

NESPA ENTERPRISES INC.
 2800 Richter Ave. Ste. C Oroville, CA 95966
 Office: (530) 534-9910 Fax: (530) 534-9915
 E-Mail: sales@tiledspas.com Web Site: www.tiledspas.com



| | | |
|--------------------|----------------------|-----------------------|
| SIZE A | DWG NAME FLETCHER | DWG TYPE EQ Layout |
| SCALE 1/8" = 1' | DATE 1/15/2009 | SHEET PAGE 2 OF 6 |

- #1 - FIELD TILE: Anatolian Creme 2x2
- #2 - WATERLINE (optional): Anatolian Creme 2x2
- #3 - BENCH & STEP EDGES (optional): TUMBLLED GREEN 1x1
- #4 - TILED LIP (optional): Anatolian Creme 2x2

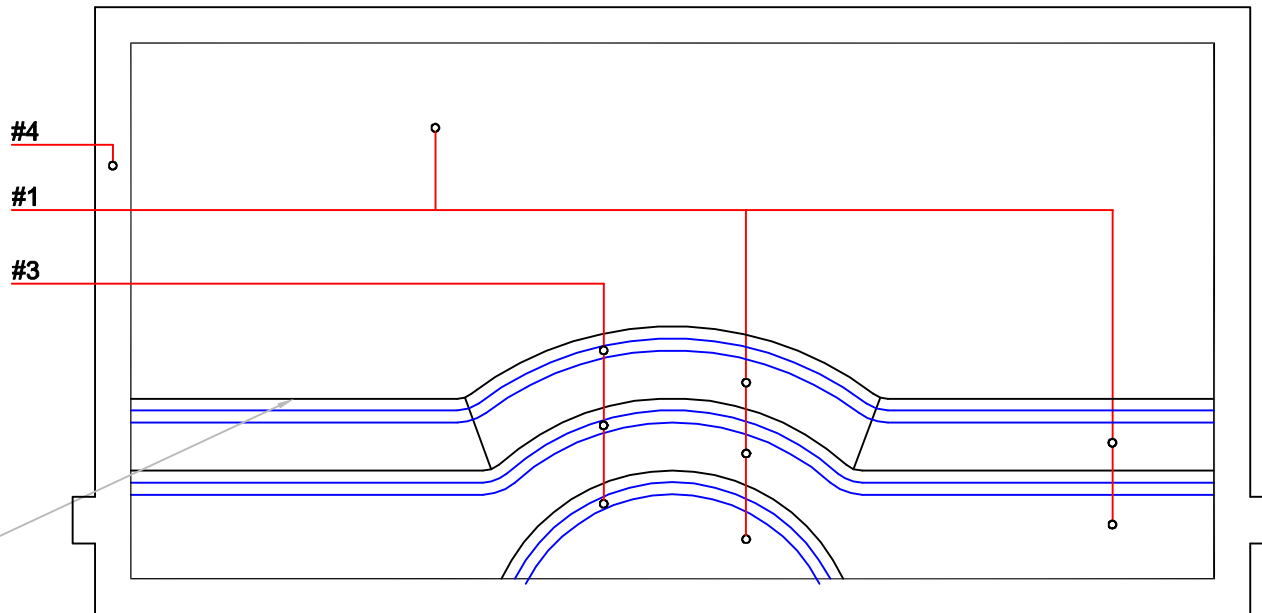
Date: _____

Approval: _____

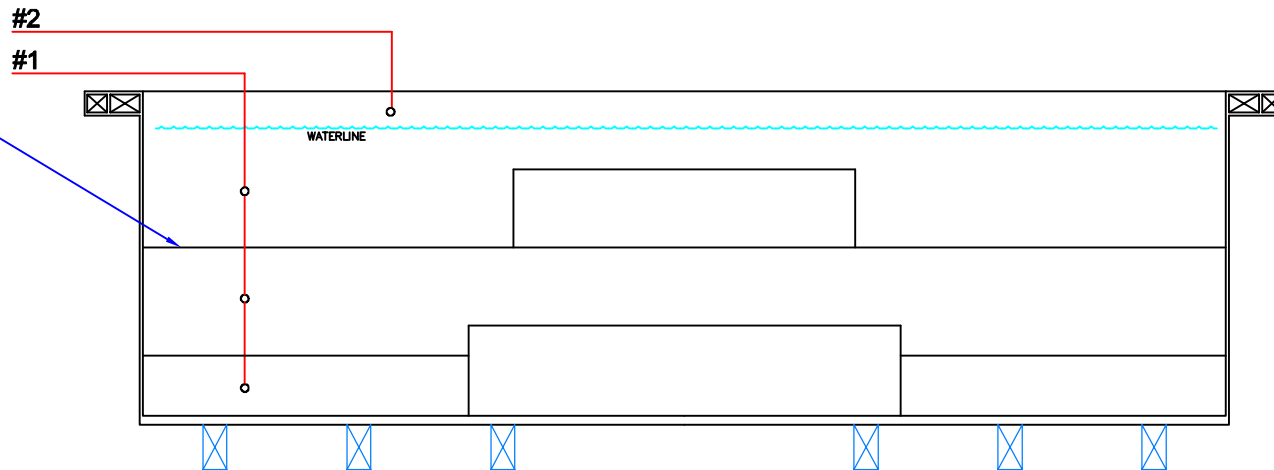
#1 - GROUT: _____

#2 - GROUT: _____

#3 - GROUT: _____



BEVEL ALL BENCH AND STEP EDGES



Mar 11, 2009 - 1:11pm

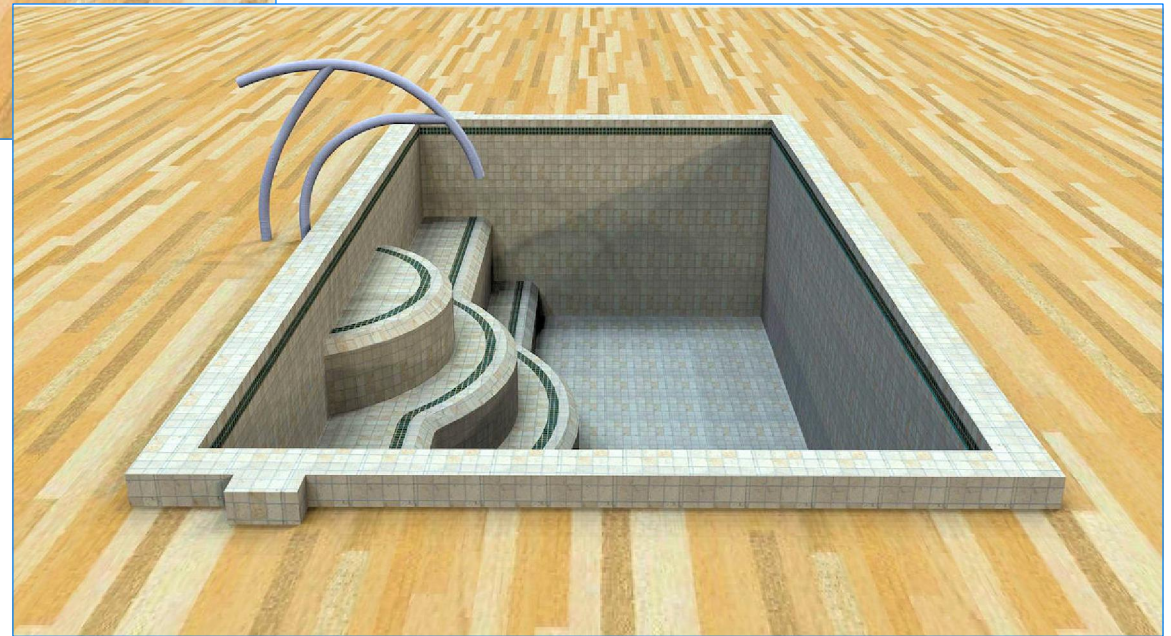
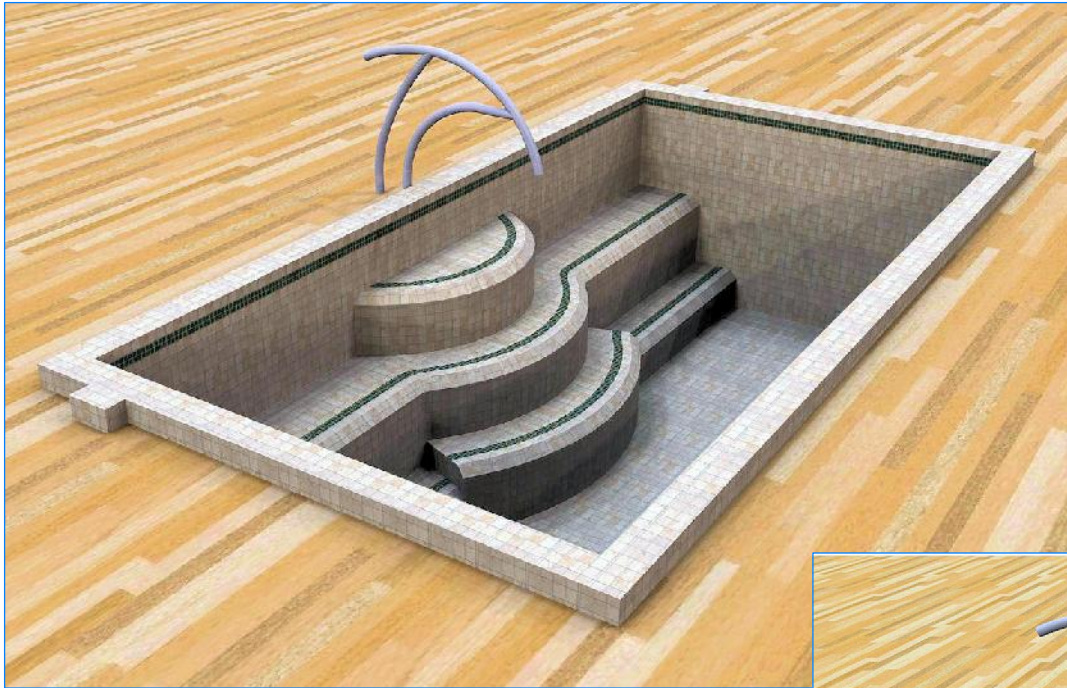
ALL DIMENSIONS SUBJECT TO 1/4" TOLERANCES

These drawings, concepts, and details contained herein are the original proprietary designs of NESPA ENTERPRISES, developed over many years of experience in the pool and spa industry and as such are protected by the copyright laws of the United States Government. Reproduction of any of the above without written permission to do so by NESPA ENTERPRISES, is illegal.

NESPA ENTERPRISES INC.
 2800 Richter Ave. Ste. C Oroville, CA 95966
 Office: (530) 534-9910 Fax: (530) 534-9915
 E-Mail: sales@tiledspas.com Web Site: www.tiledspas.com



| | | |
|--------------------|----------------------|----------------------|
| SIZE A | DWG NAME FLETCHER | DWG TYPE TILE |
| SCALE 3/8" = 1' | DATE 12/30/2008 | SHEET PAGE 3 OF 6 |



Mar 11, 2009 - 1:11pm

ALL DIMENSIONS SUBJECT TO 1/4" TOLERANCES

These drawings, concepts, and details contained herein are the original proprietary designs of NESPA ENTERPRISES, developed over many years of experience in the pool and spa industry and as such are protected by the copyright laws of the United States Government. Reproduction of any of the above without written permission to do so by NESPA ENTERPRISES, is illegal.

NESPA ENTERPRISES INC.

2800 Richter Ave. Ste. C Oroville, CA 95966

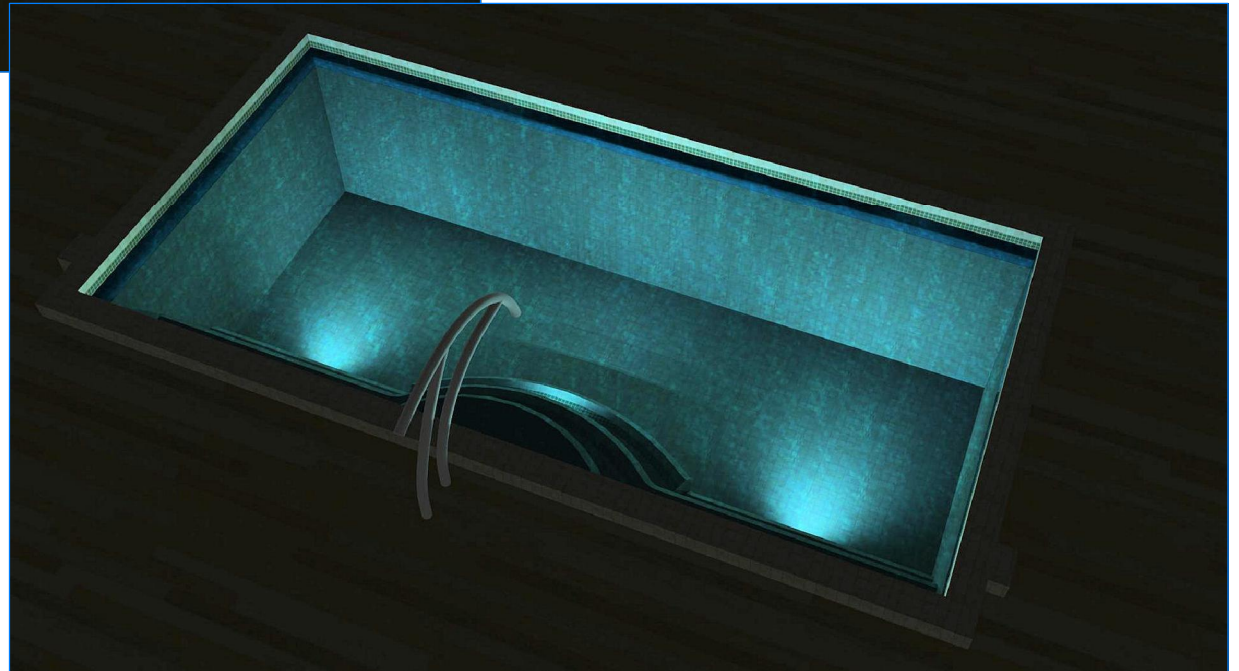
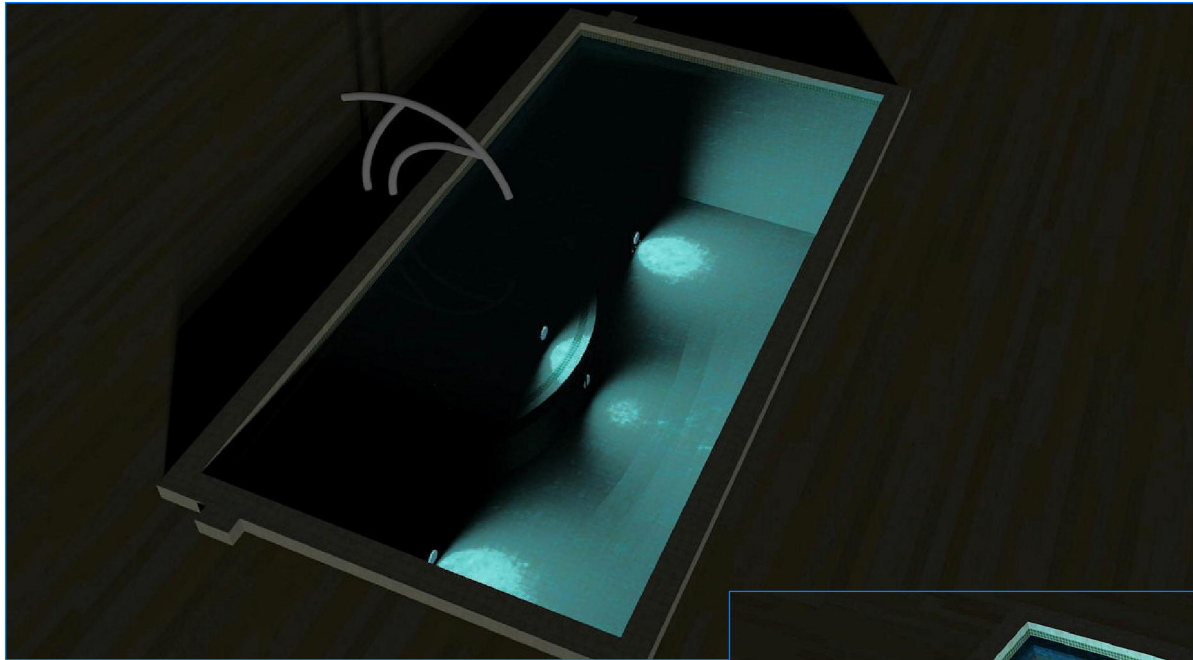
Office: (530) 534-9910

Fax: (530) 534-9915

E-Mail: sales@tiledspas.com Web Site: www.tiledspas.com



| | | | |
|--------------|----------------------|--------------------|-------------|
| SIZE A | DWG NAME FLETCHER | DWG TYPE Render | |
| SCALE N/A | DATE 12/22/2008 | SHEET | PAGE 4 OF 6 |



Mar 11, 2009 - 1:11pm

ALL DIMENSIONS SUBJECT TO 1/4" TOLERANCES

These drawings, concepts, and details contained herein are the original proprietary designs of NESPA ENTERPRISES, developed over many years of experience in the pool and spa industry and as such are protected by the copyright laws of the United States Government. Reproduction of any of the above without written permission to do so by NESPA ENTERPRISES, is illegal.

NESPA ENTERPRISES INC.

2800 Richter Ave. Ste. C Oroville, CA 95966

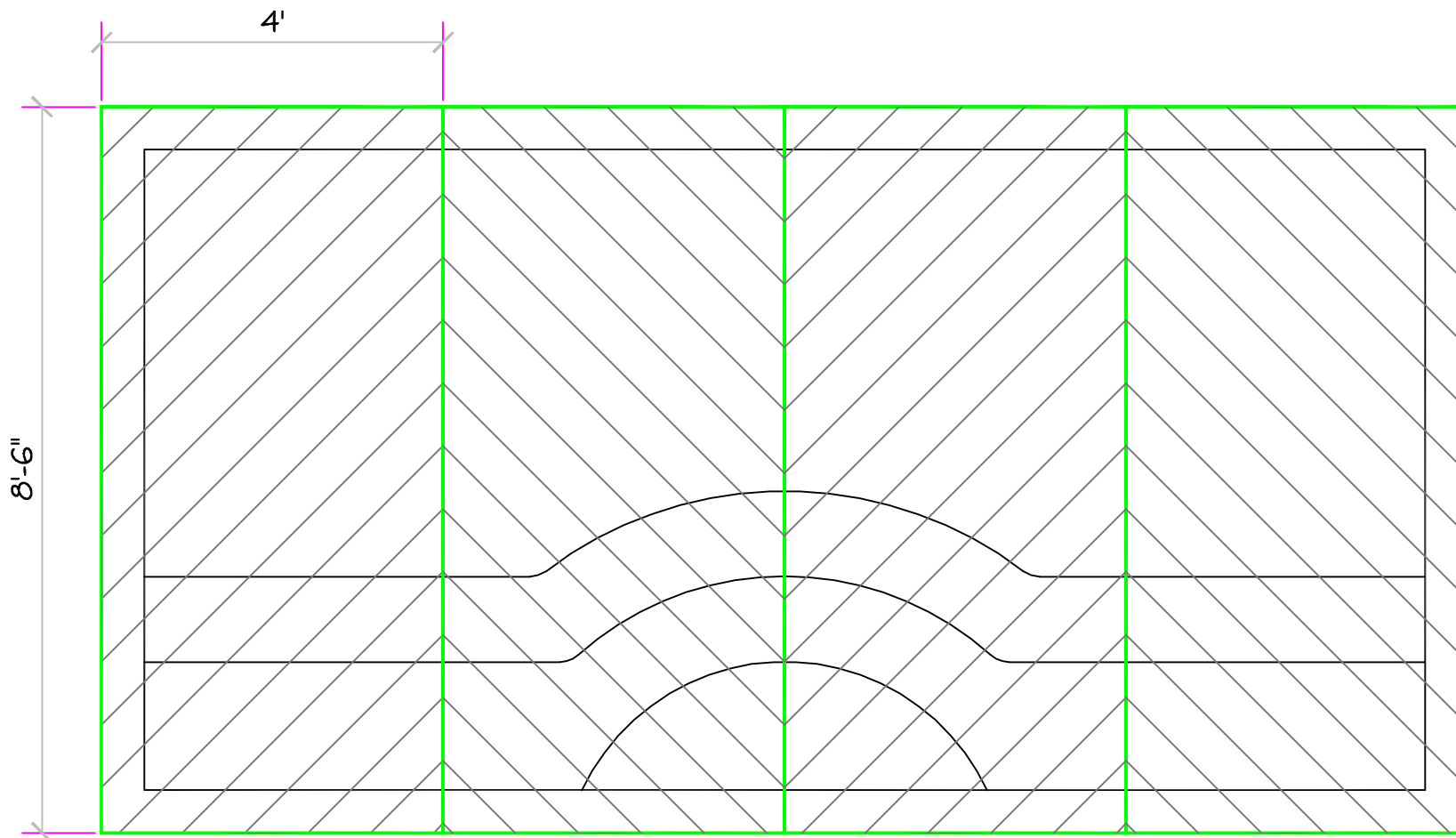
Office: (530) 534-9910

Fax: (530) 534-9915

E-Mail: sales@tiledspas.com Web Site: www.tiledspas.com



| | | |
|--------------|----------------------|------------------------|
| SIZE A | DWG NAME FLETCHER | DWG TYPE Render (2) |
| SCALE N/A | DATE 12/22/2008 | SHEET PAGE 5 OF 6 |



ALL DIMENSIONS SUBJECT TO 1/4" TOLERANCES

Mar 11, 2009 - 1:12pm

These drawings, concepts, and details contained herein are the original proprietary designs of NESPA ENTERPRISES, developed over many years of experience in the pool and spa industry and as such are protected by the copyright laws of the United States Government. Reproduction of any of the above without written permission to do so by NESPA ENTERPRISES, is illegal.

NESPA ENTERPRISES INC.

2800 Richter Ave. Ste. C Oroville, CA 95966

Office: (530) 534-9910

Fax: (530) 534-9915

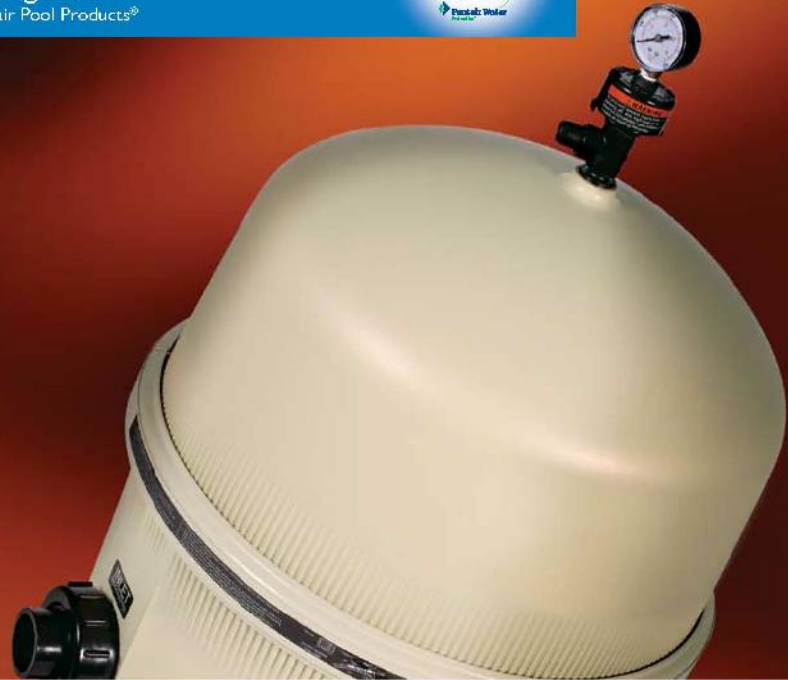
E-Mail: sales@tiledspas.com Web Site: www.tiledspas.com



| | | |
|------------------------|-----------------------------|--------------------------|
| SIZE A | DWG NAME FLETCHER | DWG TYPE COVER |
| SCALE 1/2" = 1' | DATE 12/2/2008 | SHEET PAGE 6 OF 6 |

Clean & Clear® Plus Cartridge Filter

By Pentair Pool Products®



Clean & Clear® Plus Cartridge Filter



- 2" plumbing for maximum flow and faster water cleaning
- Clamp ring for safe and quick access to cartridges
- Single-piece fiberglass reinforced polypropylene tank for strength and corrosion resistance
- Easy access 1 1/2" drain makes proper winterization fast and simple



| Model Number | Filter Area Sq. Ft. | Vertical* Clearance | Filter Diameter | Flow Rate GPM | | Turnover Capacity-Res. (Gallons) | | |
|---------------------|---------------------|---------------------|-----------------|---------------|------|----------------------------------|--------|---------|
| | | | | Res.** | Com. | 8hrs. | 10hrs. | 12hrs. |
| CCP240 | 240 | 56" | 21.5" | 90 | 90 | 43,200 | 54,000 | 64,800 |
| CCP320 ¹ | 320 | 62" | 21.5" | 120 | 120 | 57,600 | 72,000 | 86,400 |
| CCP420 ¹ | 420 | 68" | 21.5" | 150 | 150 | 72,000 | 90,000 | 108,000 |
| CCP520 ¹ | 520 | 74" | 21.5" | 150 | 150 | 72,000 | 90,000 | 108,000 |

¹ NSF Listed
^{*} Required clearance to remove filter elements.
^{**} Maximum flow rate.

Crystal clear water the easy way

Clean & Clear® Plus cartridge filter combines top-end filter performance with low maintenance. This dependable design uses special filter elements to strip tiny particles from your pool water - particles as small as 30 microns. (An average grain of beach sand is 1000 microns!) Our four cartridge design provides maximum filter surface area to capture more dirt and extend time between cleaning. And cleaning is a snap. Open the top, remove the cartridges, hose them off, and Clean & Clear Plus is ready to go again.

We've maximized cartridge surface consistency to bleed and trap the maximum amount of solids, plus we use the most durable materials to extend cartridge life. Clean & Clear Plus delivers commercial-grade performance that keeps pools clean and sparkling, day in and day out.

- Four-cartridge design traps more dirt and extends time between cleanings.
- Cartridges are easy to remove and rinse.

- Clamp ring allows easy access to cartridges and internal parts to speed service routines.
- 1 1/2" drain is easy to access and located to ensure complete draining during winterization.
- Fiberglass reinforced polypropylene tank is strong and corrosion resistant for extra-long life.

An Eco Select™ Choice

Clean & Clear Plus is an Eco Select™ Choice. The Eco Select brand identifies our "greenest" and most efficient equipment choices.

Water flows very efficiently through the Clean & Clear Plus filters, often allowing the use of smaller pumps or lower pump speeds to minimize energy use. And when you rinse cartridges rather than backwash, you can significantly reduce water use, too.



Four cartridges in a compact design

Clean & Clear® Plus cartridge filters contain four polyester cartridges that hold enormous amounts of dirt, yet are easy to clean. The fiberglass reinforced tank halves are secured with an innovative clamp ring – just loosen the ring and remove the top half for easy cartridge access and rinsing. Filter maintenance doesn't get any easier:

- Continuous internal air bleed prevents air build-up, to keep the filter operating at peak performance.
- Single-piece base and body for strength, stability, and years of dependable service.
- One year limited warranty. See warranty for details.

Available from:



Because reliability matters most®
www.pentairpool.com
 Phone: 800-831-7133 Fax: 800-284-4151

pumps / filters / heaters / heat pumps / automation / lighting / cleaners / sanitizers / maintenance products

3008 Pentair P1 151



©2008 Pentair Water Pool and Spa, Inc. All rights reserved.

SCALE N/A

PLOT TIME

Mar 11, 2009 – 1:12pm

DWG NAME

FLETCHER

DWG TYPE

EQ

EasyTouch® Pool and Spa Control Systems

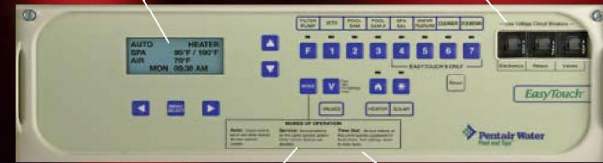
By Pentair Water Pool and Spa®



EasyTouch® Pool and Spa Control System

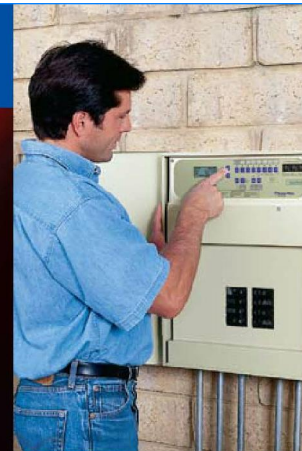
LCD display informs and instructs every step of the way

Resettable circuit breakers are readily accessible by you or service professional from outside your home



Service Mode aids in system testing and troubleshooting – no need for service personnel to enter your home

Time Out mode allows programs to be interrupted and automatically resumed – no need to reprogram



Who says pool automation has to be costly and complicated?

Scheduling and controlling the operation of pool and spa equipment and related pool/spa accessories is now blissfully automatic, simple and affordable. New EasyTouch™ control systems eliminate the non-venience of repeated trips to the equipment pad, memorizing operating sequences, opening and closing valves and resetting time clocks and thermostats.

What's more, EasyTouch systems set the standard for operating simplicity with push-button operation and clear, intuitive instructions and displays. Your EasyTouch system introduces all circuitry and fully programmable controls in a single Load Center installed near your pool or spa equipment. This avoids expensive wiring and installation costs to make EasyTouch affordable for any budget.

An Eco Select™ Choice

Pentair control systems can optimize energy use and equipment performance by automating and synchronizing equipment scheduling. They prevent problems and waste so you don't have to rely on your memory or time-consuming time clocks to operate on dumb equipment.

As the global leader in pool and spa equipment manufacturing, we strive to provide greener choices for our customers. We hope you'll join us in embracing more eco-friendly pools/spas by choosing Eco Select products for your swimming pool.



It's like putting pool and spa operation on cruise control

EasyTouch® systems are available for a separate spa, a separate pool, or a pool/spa combination with shared equipment. You select from systems that control 4 or 8 accessory functions. Four-function systems are typically used to control pool and/or spa operation plus pool or spa lights and heaters. Eight-function systems allow separate scheduling for additional features, such as landscape lighting, waterfalls, fountains, additional heaters, and more. Take the work and worry out of scheduling and operating pool and spa heating, filtration, and cleaning cycles. For even greater convenience, you can add any of these optional controllers:

- All functions controlled with easy, one-button access from the Load Center.
- A variety of optional, simple to use remote, wired or wireless controllers for added convenience.
- Full programmability of everyday equipment operation for optimum efficiency. Re-program for variable pool/spa usage patterns or when adding or changing equipment to maintain peak efficiency.
- Onboard diagnostics make service simple. Built-in, self-test diagnostics give you the ability to verify correct operation of specific functions, and a diagnostic screen reports failures for troubleshooting and repair.



Indoor Control Panel (for 4 or 8 function control)

EasyTouch Wireless Controller

QuickTouch® 4-Button Wireless Remote

iS4 Spa-side Remote (in choice of colors: white, grey or black) with varying cable lengths.

Available from:



Pentair Pool Products® 800.831.7133
www.pentairpool.com
Sta-Rite® 800.831.7133
www.staritepool.com

pumps / filters / heaters / heat pumps / automation / lighting / cleaners / sanitizers / water features / maintenance products

©2008 Pentair Water Pool and Spa, Inc.

All rights reserved.

SCALE N/A

PLOT TIME

Mar 11, 2009 – 1:12pm

DWG NAME

FLETCHER

DWG TYPE

EQ (2)

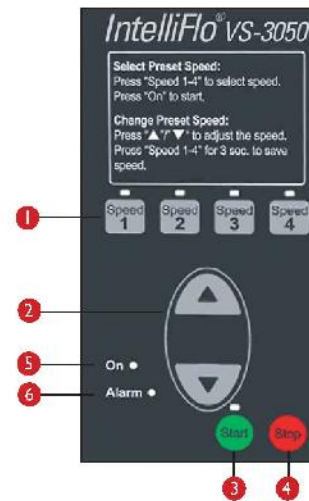


IntelliFlo® VS-3050 Variable Speed Swimming Pool Pump Quick-Start Guide

Step-by-step instructions for easy set-up and operation



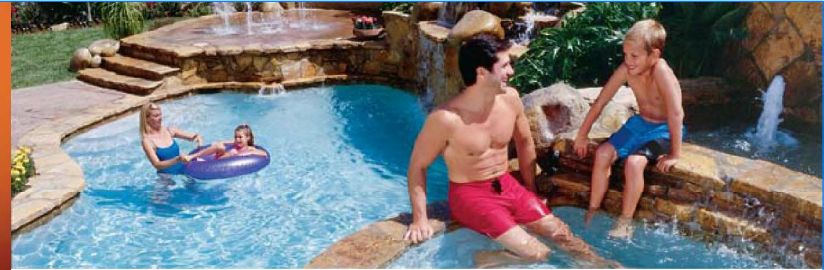
Control Panel



- 1 **Speed 1, speed 2, speed 3, and speed 4 button/LED:** Press one of the speed buttons to select the desired preset pump speed. The pump preset speeds are: **Speed 1 (750 RPM), Speed 2 (1500 RPM), Speed 3 (2350 RPM), and Speed 4 (3110 RPM).** The speed button LED is on when the selected button is pressed. If the pump is running and the Up/Down button is used to adjust the speed, the selected speed LEDs will go off.
- 2 **Up/Down button –** While the pump is running, press Up or Down button to increase or decrease the pump speed. To save the new pump speed, press any one of the four speed buttons for three seconds to assign the speed to the selected button (the LED be on). Four adjusted pump speeds can be assigned to the speed buttons. When the pump is using an adjusted speed and the pump is powered down, the next time the pump is powered up, the pump will use the same speed.
- 3 **Start button/LED:** Starts the pump using a selected or adjusted speed. This LED is on when the pump is running.
- 4 **Stop button:** Press this button to stop the pump.
- 5 **On LED:** This green power LED is on when IntelliFlo is powered up.
- 6 **Alarm LED:** The red LED flashes when an error condition occurs. The green LED will flash a certain number of times indicating a specific error condition.

IntelliFlo® VS 3050 Quick-Start Guide

No matter what your criteria for top performance and value, MasterTemp® meets them all



Fast, efficient, compact, quiet, safe and eco-friendly

No matter what you're seeking in your swimming pool heater, MasterTemp® measures up. Compare this list of features to any other and you'll see why MasterTemp is setting a new standard for total value.

- ✓ Very compact design for such a high performance heater allows for smaller overall equipment pads that won't intrude on your poolscape.
- ✓ A fully pre-mixed system with a highly efficient air and gas mixture lets MasterTemp heat up fast. No long waits before enjoying your pool or spa.
- ✓ Compare energy efficiency ratings and you'll find MasterTemp at the top of the list. Comfort and economy can go together.
- ✓ With a hot surface ignition (no pilot light) and pushbutton, digital controls, MasterTemp is as easy to operate as your home heating system. Plus, user-friendly indicator lights make system operation and monitoring a snap.
- ✓ The easy-to-view, rotating digital display controls front and center, no matter how MasterTemp is positioned on your equipment pad.
- ✓ MasterTemp is engineered for super-quiet operation and won't intrude on your poolside leisure time.
- ✓ A tough, rustproof composite exterior handles the heat and weathers the elements.
- ✓ Eco-friendly, MasterTemp is certified for low NOx emissions and outperforms industry standards.
- ✓ Safe operation is assured through a series of features, including: a water pressure switch that senses the pump is running to prevent overheating; high limit switches assure the heater turns off if water temperature exceeds factory-set limits; manual gas shut-off when service is required; stack flue sensor also guards against overheating.
- ✓ Approved for installation on combustible surfaces.



Don't be left out in the cold with heaters that don't measure up to today's longer list of must-have features. Insist on MasterTemp and you're insisting on better performance and lifetime value.

MasterTemp's easy-to-read controls make system operation and monitoring simple. Pool and spa temperatures can be pre-set and controlled with the push of a button. A digital display indicates the water temperature, and five LED lights give you system status and let you know if the heater needs service.

Easy to install or retrofit in even the tightest space — models from 200M to 400M BTUs — all measure 21L x 21W x 28H

Rotating digital display means more installation options and easier access to view operating information

Rustproof, tough composite exterior for long life

Available in natural gas and propane models.

Pool Sizing*

| °F Temperature Change/ 24 Hrs. | Heater Size | | | | Heater Size | | | |
|--------------------------------|--------------------------|-----------------|-----------|-----------------|--|-----------------|-----------|-----------------|
| | Model 200 | Model 250/250HD | Model 300 | Model 400/400HD | Model 200 | Model 250/250HD | Model 300 | Model 400/400HD |
| | Pool Capacity in Gallons | | | | Pool Surface Area in Sq. Ft. at 5.5' Depth | | | |
| 5 | 97,383 | 121,729 | 146,075 | 194,766 | 2,364 | 2,955 | 3,546 | 4,727 |
| 10 | 48,691 | 60,864 | 73,037 | 97,383 | 1,182 | 1,478 | 1,773 | 2,364 |
| 15 | 32,461 | 40,576 | 48,692 | 64,922 | 788 | 985 | 1,182 | 1,576 |
| 20 | 24,346 | 30,433 | 36,519 | 48,691 | 591 | 739 | 887 | 1,182 |
| 25 | 19,477 | 24,346 | 29,216 | 38,953 | 473 | 591 | 710 | 945 |
| 30 | 16,230 | 20,288 | 24,345 | 32,461 | 394 | 493 | 591 | 788 |
| 35 | 13,912 | 17,390 | 20,868 | 27,824 | 338 | 423 | 507 | 675 |
| 40 | 12,173 | 15,216 | 18,260 | 24,346 | 295 | 369 | 443 | 591 |

Spa Sizing*

| Model | Spa Volume (Gallons) | | | | | | | | |
|-----------|--|------|------|------|------|------|------|------|-------|
| | 200 | 300 | 400 | 500 | 600 | 700 | 800 | 900 | 1,000 |
| | Minutes for 30°F Temperature Rise (Heater Input in 1,000 BTU/HR) | | | | | | | | |
| 200 | 18.0 | 27.0 | 35.0 | 44.0 | 53.0 | 62.0 | 71.0 | 80.0 | 89.0 |
| 250/250HD | 15.8 | 23.5 | 30.8 | 38.5 | 46.5 | 54.3 | 62.0 | 70.0 | 77.8 |
| 300 | 13.5 | 20.0 | 26.5 | 33.0 | 40.0 | 46.5 | 53.0 | 60.0 | 66.5 |
| 400/400HD | 9.0 | 13.0 | 18.0 | 22.0 | 27.0 | 31.0 | 35.0 | 40.0 | 44.0 |

Note: The chart is based on a 30°F (5.6°C) temperature rise, discounting losses and only based on heat required to raise temperature, in minutes. Two-year limited warranty. See warranty for details.

*ASME models available. See your Pentair Water Pool and Spa representative for details.

SCALE N/A

PLOT TIME

Mar 11, 2009 — 1:12pm

DWG NAME

FLETCHER

DWG TYPE

EQ (4)

Rainbow™ Model 300/320

Automatic Chlorine/Bromine Feeders
By Pentair Water Pool and Spa®



The efficient, easy way to sanitize your pool or spa

The Rainbow™ Models 300 and 320 automatic chlorine/bromine feeders not only save time, but also reduce manual handling of chemicals. They use large or small Trichlor or Bromine slow-dissolving tablets to make sanitizing your new or existing pool or spa easy and automatic. Both install easily on the pressure side of the pump, downstream of the filter and heater.

The freestanding Model 300 and the in-line Model 320 both feature an external fine control valve that lets you adjust the feed rate to meet specific pool or spa requirements. The 300 is ideal for retrofitting existing pools for automatic sanitization. The 320 is designed for permanent installation in the return line of new or existing systems, and dispenses sanitizer directly into your pool or spa, downstream of all equipment.

- Completely enclosed systems—no escaping fumes.
- Simple, troublefree designs—no special venting required.
- Top-loading makes it easy to add chemicals. Also available in clear amber for easy tablet viewing.



Feeder extensions increase tablet or stick capacity so you can vacation without worrying about running out of chlorine.

Rainbow™ Model 300/320

Automatic Chlorine/Bromine Feeders



Flow indicator allows a quick visual read of water flow

Check valve protects pump and heater against damage from back-up of highly chlorinated water

Save time, reduce manual handling of chemicals

Whether you choose the free-standing Model 300 or the in-line Model 320, Rainbow™ automatic chlorine/bromine feeders will take the work and worry out of keeping your pool sparkling clean and ready to use.

Model 300

| Chamber Capacity | Quantity | Weight |
|------------------------------------|----------|-----------|
| 1" Tablet | 98 | 3.5 lbs. |
| 3" Tablet | 11 | 4.8 lbs. |
| Maximum Erosion in 24 Hours | | 1.19 lbs. |

Treats Pool/Spa Size in Gallons per 24 Hours*

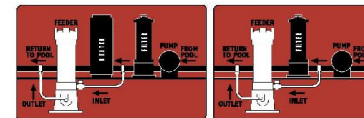
| | |
|----------|--------|
| @ 10 ppm | 11,900 |
| @ 5 ppm | 23,800 |
| @ 2½ ppm | 47,600 |

| | | |
|-------|------|-------|
| 21" H | 7" W | 12" D |
|-------|------|-------|

Service Clearance for Lid Removal

| | |
|--|------|
| | 22¼" |
|--|------|

*using 1" Trichlor tabs



Model 320

| Chamber Capacity—1" Tablet | Bottom Feed | Top Feed |
|----------------------------|-------------|----------|
| Quantity | 98 | 98 |
| Weight | 3.5 lbs. | 3.5 lbs. |

Chamber Capacity—3" Tablet

| | | |
|----------|----------|----------|
| Quantity | 11 | 11 |
| Weight | 4.8 lbs. | 4.8 lbs. |

Maximum Erosion in 24 Hours

| | |
|-----------|-----------|
| 0.67 lbs. | 1.75 lbs. |
|-----------|-----------|

Treats Pool/Spa Size in Gallons per 24 Hours*

| | | |
|----------|-------|--------|
| @ 10 ppm | 6,700 | 17,500 |
|----------|-------|--------|

| | | |
|---------|--------|--------|
| @ 5 ppm | 13,400 | 35,000 |
|---------|--------|--------|

| | | |
|----------|--------|--------|
| @ 2½ ppm | 26,800 | 70,000 |
|----------|--------|--------|

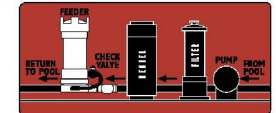
Dimensions

| | |
|-----------------------|-----------------------|
| 17¾" H x 5" W x 10" D | 17¾" H x 5" W x 10" D |
|-----------------------|-----------------------|

Service Clearance for Lid Removal

| | |
|--|-----|
| | 19" |
|--|-----|

*using 1" Trichlor tabs



Available from:



Pentair Pool Products® Sta-Rite®
800.831.7133 800.831.7133
www.pentairpool.com www.staritepool.com

pumps / filters / heaters / heat pumps / automation / lighting / cleaners / sanitizers / maintenance products

300/320 P&S-MS-10-5



©2008 Pentair Water Pool and Spa, Inc. All rights reserved.

SCALE N/A

PLOT TIME

Mar 11, 2009 — 1:12pm

DWG NAME

FLETCHER

DWG TYPE

EQ (5)

STANDARD NESPA IN-GROUND INSTALLATION INSTRUCTIONS **SET-UP AND EXCAVATION**

Prerequisites: Before installing your Nespa spa. You may be required to acquire a permit from your local State, County, and City building dept and or Health department. (Commercial jobs need Health Dept. Approval). Your spa installation must comply with the most current codes. (**Uniform Swimming Pool, Spas & Hot Tub Code 2006 (USPC 2006)**).

Spa drawings: Request from Nespa a current spa specific construction detail, plan and section, spa plumbing detail.

Delivery Access: Clearly determine the method of getting the spa to jobsite and into the hole. This may require the use of a crane, forklift, hoist, backhoe and/or manpower etc.

- 1) The following instructions are general guidelines and may not apply to your specific jobsite conditions. When excavating for your spa remember to provide for plumbing and light connection clearances. In order to determine how to excavate for your spa or swim spa, measure spas outside dimension (O.D.) and add minimum 3" to all sides. This 3" clearance is to accommodate jet and suction plumbing. This 3" clearance can change or be reduced upon request. Note: skimmer location, this area may have to be larger than 3", if commercial 22".
- 2) **Freeze Climates-** If the spa is placed into a vault (typical of freeze climates) a standard 18" or more of clearance minimum from spa perimeter should be provided. This dead air space is for possible future access to spa plumbing in case of a freeze. Area drain is mandatory. **Ask your local installer** for his experienced opinion. Do not hesitate to call us because we want to be sure that your installation progresses as smoothly as possible. If you have questions call us. (888) 479-4677.
- 2) **Hole depth** is determined by spa's outside height dimension. This height may vary depending if spa has skids or no skids. The spa lip may be finished or non-finished. How is the perimeter deck elevation transitioning to the spa? Focus on the finish surrounding deck elevations, thickness of the finish material on spa upper horizontal lip, equal to lip or under the spa lip. This material can be tile, stone, concrete or brick.
- 3) **Preplumb** the spa before it goes into the hole. If there are needs for electrical, bonding or control conduits run them as well before dropping in hole. Connect bond wire to niche would be best.
- 4) **Spa should sit on level 3 ½" thick reinforced concrete pad. Sweep debris off pad prior to dropping in hole.**
- 5) **Install spa** into the hole on top of concrete pad. Use the Eye bolts provided for crane, forklift etc. rigging. Do not hold onto pipes. Use caution with suction and jet plumbing when lowering into hole. **DO NOT STRESS FITTINGS!** Fill Spa with water and check for leaks prior to backfill.

- 6) **Check site reference** points for proper spa positioning (i.e., squaring to house, garage, etc.).
- 7) **Shim to level spa.** Shim with non-compression able material. Re square to house, or ref. point.
- 8) **Dry pack** with cement the gaps that have been created when shimming spa level.
- 9) **Connect pipes to tees** if spa is preplumb. Installers properly support your new plumbing from stressing spas preplumb fittings. After electrical conduit and bond wire is connected to light niche, water test spa before back filling with sand.
NOTE: All Nespa products are water tested prior to leaving factory.

ELECTRICAL:

- 1) All electrical connections to spa or equipment should comply with the most recent national electrical code (NEC), state and local codes.
- 2) Connect electrical conduit to light niche. This work should be done or reviewed by a licensed electrician.
- 3) To install spa light you will need to include inside the PVC conduit to the light niche a solid #8 coated copper wire. (If you are use brass conduit, internal bond wire is not required.) This bond wire should be pulled with the light cord at the same time. This bond wire needs to be attached to the internal bonding lug of the light niche. An approved encapsulate should be applied to bond wire connection in niche.
- 4) An external #8 copper wire shall be connected to the external bonding lug on the rear of the light niche. This copper wire can then be used for additional bonding requirements (i.e., handrails or any other metallic object within 5' of the spa.

PLUMBING:

- 1) **When plumbing a Nespa it is important to properly size the plumbing. We highly recommend that you follow the pump manufacturer's pipe sizing requirements and Uniform Swimming Pool, Spas & Hot Tub Code 2006 (USPC 2006). This code book is available at www.IAPMO.org or (909) 472 4100.**
- 2) The jet air venturi should be a Hartford loop design adjacent to spa shell and air entry point can be located next to spa or remotely at equipment.
- 3) Fill spa with water and test the system for leaks PRIOR to backfilling with sand.

SAND BACK FILL:

- 1) **With water in spa, back-fill around spa perimeter with dry plaster sand and wet wash with hydraulic attachment to hose. Let set for one hour and hydraulic dry again. Be sure water level in spa is at the highest level. Any questions please call us. (888) 479-4677.**
- 2) **If spa is free standing on elevated deck or a structure, it is important to fill spa with water and load area prior to installing coping or perimeter decking. If spa is installed in a vault situation a area drain is needed.**

NESPA ENTERPRISES INC.

2800 Richter Ave. Suite E

Oroville, CA 95966

Office: (888) 479-4677 Fax: (530) 534-9915

E-Mail: nespa@pacbell.net www.tiledspas.com

IN-GROUND

INSTALLATION

ALL DIMENSIONS SUBJECT TO 1/4" TOLERANCES

SCALE: 1/2" = 1'-0"

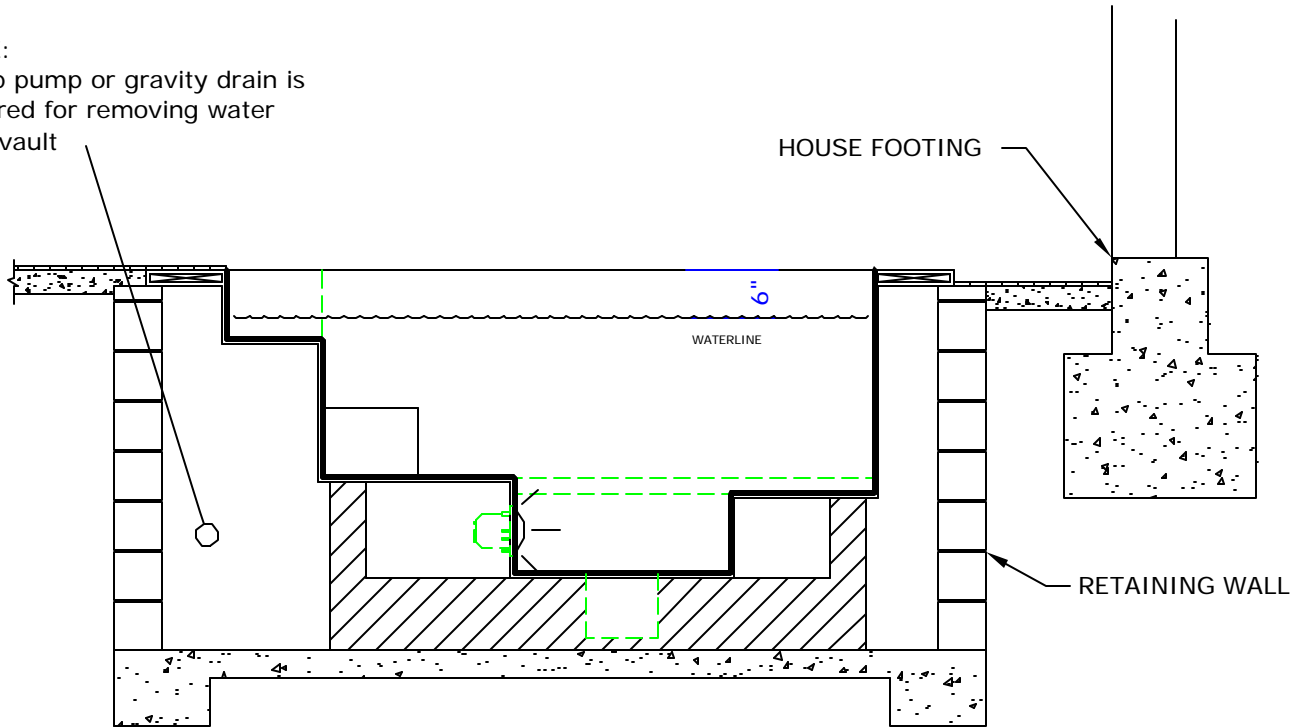
DATE: 3/27/02

JOB : STANDARD INSTALL

DW #: SI-1, SI-2

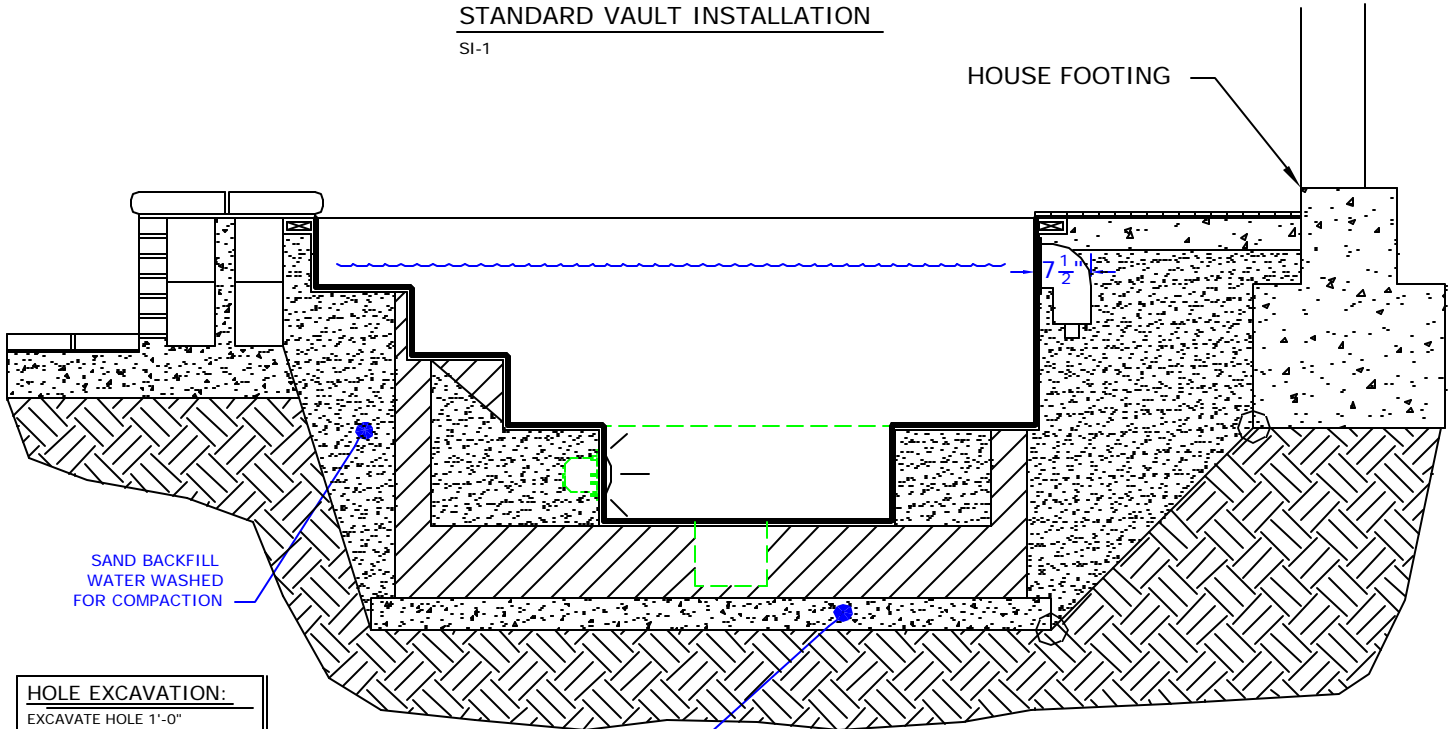
NOTE:

Sump pump or gravity drain is required for removing water from vault



STANDARD VAULT INSTALLATION

SI-1



SAND BACKFILL
WATER WASHED
FOR COMPACTION

HOLE EXCAVATION:
EXCAVATE HOLE 1'-0"
LARGER THAN THE OUTSIDE
DIAMETER (OD) OF SPA

4" CONCRETE SLAB
REINFORCED WITH
#10 MESH

STANDARD INGROUND INSTALLATION

SI-2

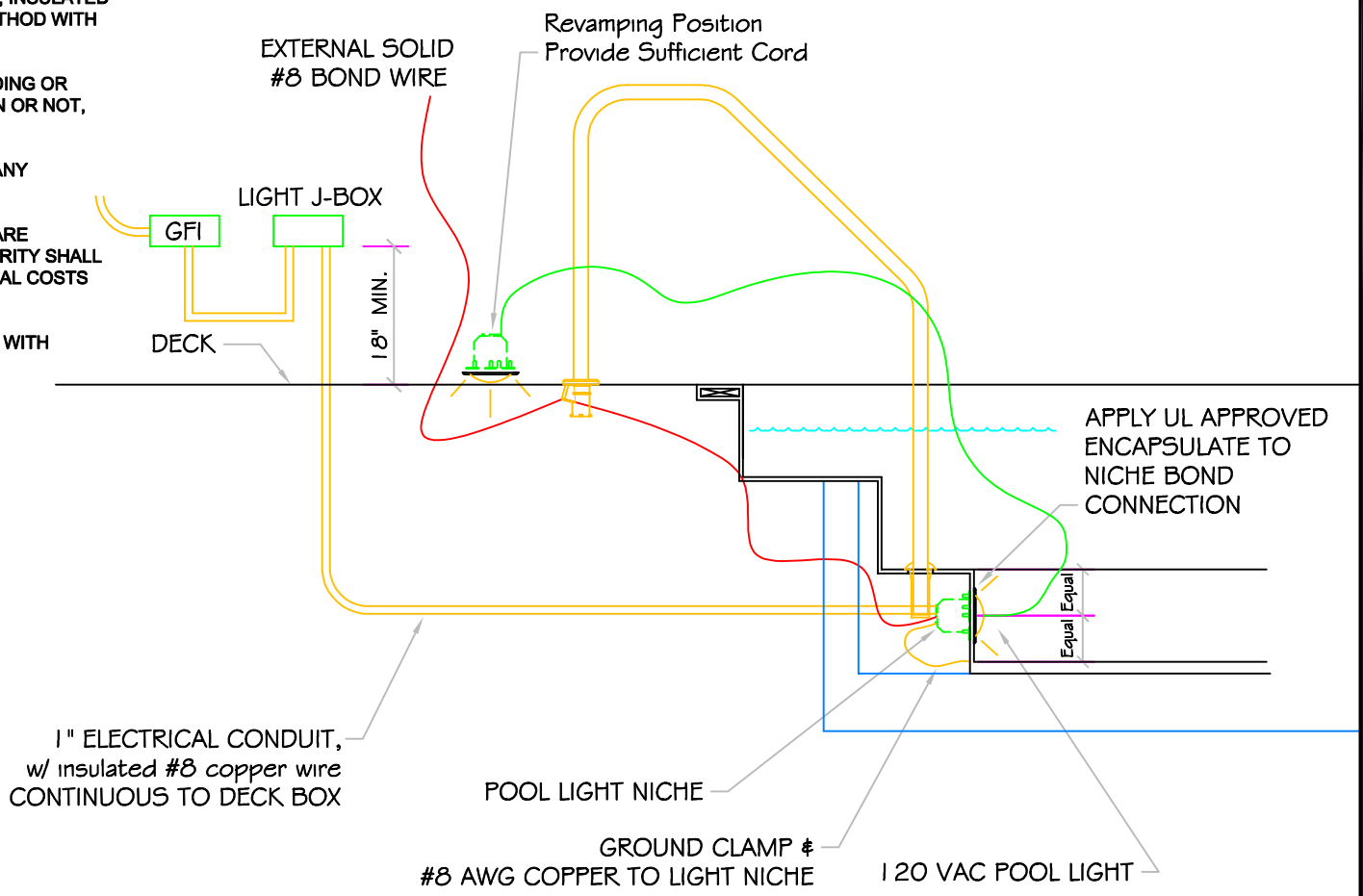
NOTE:

Footing can not surcharge spa.
Slope from bottom of slab to
nearest corner of house footing
must not exceed 1" = 1".

POOL BONDING REQUIREMENTS:

1. THE FOLLOWING PARTS SHALL BE BONDED TOGETHER AND CONNECTED TO THE COMMON BONDING GRID.
 - A. ALL THE METALLIC PARTS OF THE POOL STRUCTURE INCLUDING COPING STONES, DECK, PERMANENT PLAY STRUCTURES, PERMANENT EXERCISE STRUCTURES.
 - B. ALL METAL FITTINGS WITHIN OR ATTACHED TO THE POOL STRUCTURE
 - C. METAL PARTS ASSOCIATED WITH THE POOL WATER CIRCULATING SYSTEM, INCLUDING PUMPS, FILTERS, AND HEATERS.
 - D. METAL PARTS ASSOCIATED WITH POOL COVERS
 - E. METAL SHEATHED CABLES AND RACEWAYS, METAL PIPING AND ALL FIXED METAL PARTS WITHIN 5 FEET HORIZONTALLY OF INSIDE WALLS OF POOL AND WITHIN 12 FEET ABOVE MAXIMUM WATER LEVEL OF POOL.
 - F. METAL PARTS ASSOCIATED WITH OBSERVATION STANDS, TOWERS, PLATFORMS, AND DIVING STRUCTURES.
2. BONDING CONDUCTORS SHALL BE MINIMUM #8 SOLID COPPER, INSULATED E.C. SHALL COORDINATE APPROVED CONNECTOR TYPE AND METHOD WITH LOCAL ELECTRICAL AND/ OR POOL INSPECTOR.
3. SPECIFIC MANUFACTURER'S INSTRUCTIONS REGARDING BONDING OR GROUNDING OF POOL EQUIPMENT, WHETHER INDICATED HEREIN OR NOT, SHALL BE STRICTLY FOLLOWED.
4. THE COMMON BONDING GRID SHALL NOT BE CONNECTED TO ANY ELECTRICAL DISTRIBUTION EQUIPMENT.
5. ANY PARTS IN ADDITION TO THOSE DESCRIBED HEREIN THAT ARE INDICATED BY POOL CONTRACTOR OR LOCAL INSPECTION AUTHORITY SHALL BE BONDED TO THE COMMON BONDING GRID WITH NO ADDITIONAL COSTS INCURRED BY THE OWNER.
6. THE ELECTRICAL CONTRACTOR SHALL COORDINATE BONDING WITH GENERAL CONTRACTOR.

LIGHT DETAIL



ALL DIMENSIONS SUBJECT TO 1/4" TOLERANCES

These drawings, concepts, and details contained herein are the original proprietary designs of NESPA ENTERPRISES, developed over many years of experience in the pool and spa industry and as such are protected by the copyright laws of the United States Government. Reproduction of any of the above without written permission to do so by NESPA ENTERPRISES, is illegal.

NESPA ENTERPRISES INC.
 2800 Richter Ave. Ste. C Oroville, CA 95966
 Office: (530) 534-9910 Fax: (530) 534-9915
 E-Mail: sales@tiledspas.com Web Site: www.tiledspas.com



| | | |
|--------------------|---------------------|----------------------|
| SIZE A | DWG NAME DETAILS | DWG TYPE Detail |
| SCALE 1/2" = 1' | DATE 7/24/2008 | SHEET PAGE 1 OF 1 |

NESPA ENTERPRISES, Inc. LIMITED WARRANTY

This LIMITED WARRANTY covering NESPA products is extended to the ORIGINAL PURCHASER-USER BY NESPA ENTERPRISES Inc.(NESPA), 2800 Richter Ave. Unit C California 95966.

NESPA products are thoroughly inspected and tested prior to factory shipment. NESPA warrants to the ORIGINAL PURCHASER-USER that NESPA Spas and Swim Spas will be free of defect in workmanship, accessories and parts, provided said accessories and parts were manufactured by NESPA. NESPA, under this LIMITED WARRANTY, warrants only that its Spas and Swim Spas shall be structurally sound, shall retain their shape, and shall retain water for the warranty period. NESPA warrants the adhesion of tile to fiberglass for a period of three (3) years and structural soundness for ten (10) years. NESPA warrants epoxy grout adhesion for a period of three years. If any such defects appear and are reported within the warranty period, NESPA shall repair or replace such defective parts without charge if an inspection proves the claim.

The provisions of the LIMITED WARRANTY shall not apply to tile cracked, split, chipped or damaged after the product has left the factory, nor damage to tile caused by freezing nor to damage, defect, malfunction or failure to conform with the above warranty provisions where the damage, defect, malfunction or failure to conform was caused during shipment or by distributor or by unreasonable use by ORIGINAL PURCHASER-USER including improper water balance and improper sand pack or support.

This LIMITED WARRANTY shall not apply to any plumbing, equipment, or installation of spas and Swim Spas and shall not apply to any alterations made to or upon NESPA products except alterations made by NESPA employees or NESPA authorized representatives.

This LIMITED WARRANTY is expressly in lieu of all other warranties expressed or implied including the warranties of merchantability and fitness for use and all other obligations or liabilities on NESPA'S part, and NESPA neither assumes nor authorizes any other person to assume for NESPA any other liability in connection with the sale of this NESPA product. This LIMITED WARRANTY shall not apply to this NESPA product or any part thereof which has been subject to accident, negligence, alteration, abuse or misuse. NESPA makes no warranty whatsoever with respect to accessories or parts not manufactured by NESPA.

The term "ORIGINAL PURCHASER-USER" as used in this LIMITED WARRANTY shall be deemed to mean that person for whom the NESPA product is originally installed.

The LIMITED WARRANTY provided herein and the obligations and liabilities of NESPA hereunder are exclusive and are in lieu of, and buyer and original PURCHASE-USER hereby waive all other remedies, warranties, guarantees or liabilities, expressed or implied, arising by law or otherwise (including without limitation and obligations of NESPA with respect to fitness, merchantability, and consequential damages) or whether or not occasioned by NESPA'S negligence.

This LIMITED WARRANTY shall not be extended, altered or varied except by a written instrument signed by NESPA and original PURCHASER-USER.