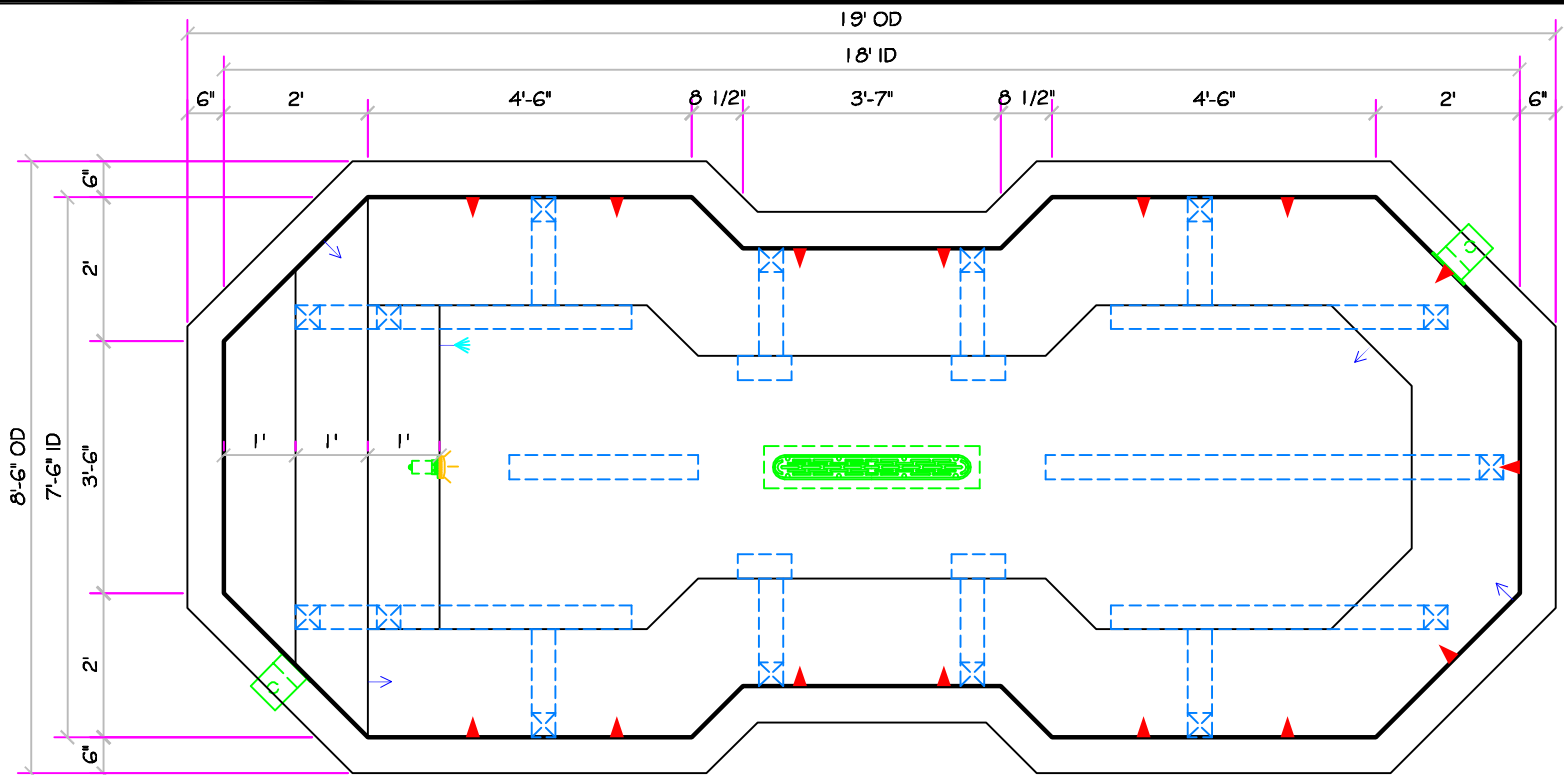
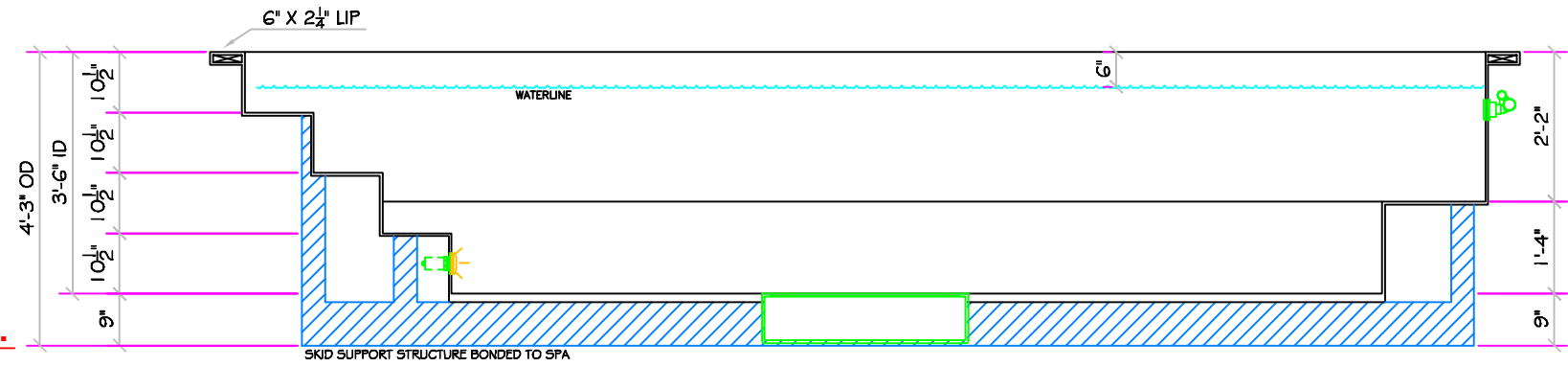


SPECIFICATIONS	
DRY WEIGHT:	3350 LBS.
TOTAL WEIGHT:	23617 LBS.
WATER:	2431 GAL.
VOLUME:	325 Cu.Ft.
WEIGHT:	20267 LBS.
SURFACE AREA:	121 SQ. FT.
IAPMO#:	1138
FDA#:	2030305

<b>SKID SUPPORT STRUCTURE* BONDED TO SPA</b>	
*SKIDS SUPPLIED BY NESPA	
<b>LIGHT NICHE</b>	
PAL, 2000 LV LIGHT, 12 VOLT 50 WATT, UL APPROVED	
<b>SKIMMER</b>	
FRONT ACCESS SKIMMER, NSF APPROVED	
<b>MAIN DRAIN</b>	
AquaStar 32CDFLR, 32" Channel Drain, Approved Max. Flow Rate/Floor = 238 GPM @ 3.4 fpi, Wall = 136 GPM @ 1.9 fpi, V.G.B Approved Safety Drain	
<b>JET</b>	
HYDRO INLETS 1-1/2" WATER - 1-1/2" AIR HYDROAIR #10-5100 COMPLIES W/ ANSI CODE ASME A112.19.8-07 UL APPROVED	
<b>RETURN</b>	
INLET FITTINGS 1-1/2" WALL TYPE W/EYEBALL HYDROAIR #10-3500 COMPLIES W/ ANSI CODE ASME A112.19.8-07 UL APPROVED	
<b>FILL</b>	
INLET FITTINGS 1-1/2" WALL TYPE W/EYEBALL HYDROAIR #10-3500 COMPLIES W/ ANSI CODE ASME A112.19.8-07 UL APPROVED	



**18' RENAISSANCE  
(SWIM SPA)  
ALL TILED SPA**



**\* Complies with V.G.B. Pool and Spa Safety Act**

\*ALL DIMENSIONS SUBJECT TO 1/4" TOLERANCES\*

Oct 30, 2009 - 9:55am

These drawings, concepts, and details contained herein are the original proprietary designs of NESPA ENTERPRISES, developed over many years of experience in the pool and spa industry and as such are protected by the copyright laws of the United States Government. Reproduction of any of the above without written permission to do so by NESPA ENTERPRISES, is illegal.

**NESPA ENTERPRISES INC.**  
2800 Richter Ave. Ste. C Oroville, CA 95966  
Office: (530) 534-9910 Fax: (530) 534-9915  
E-Mail: [sales@tiledspas.com](mailto:sales@tiledspas.com) Web Site: [www.tiledspas.com](http://www.tiledspas.com)



SIZE <b>A</b>	DWG NAME <b>NESPA_RESIDENTIAL_MODELS</b>	DWG TYPE <b>SD1</b>
SCALE <b>3/8" = 1'</b>	DATE <b>10/30/2009</b>	SHEET <b>PAGE 1 OF 1</b>